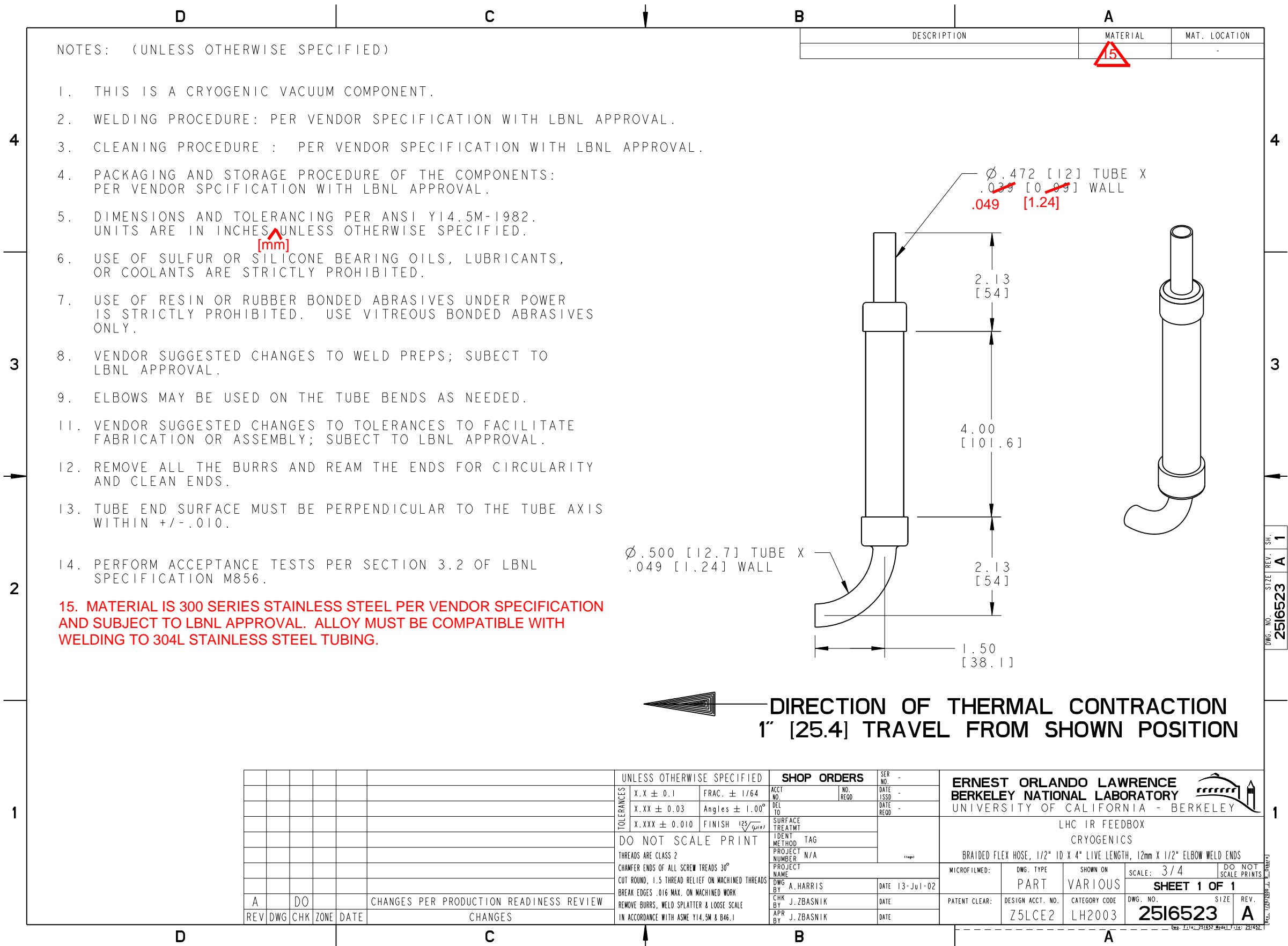


NAME: ARHARRIS OBJECT: 251652 DATE: 19-Jul-02 15:31:48



4  
3  
2  
1

4  
3  
1

REV	DWG	CHK	ZONE	DATE	CHANGES
A		DO			CHANGES PER PRODUCTION READINESS REVIEW

TOLERANCES		UNLESS OTHERWISE SPECIFIED		SHOP ORDERS	
X.X ± 0.1	FRAC. ± 1/64	ACCT NO.	NO. REQD.	SER. NO.	-
X.XX ± 0.03	Angles ± 1.00°	DATE ISSD.		DATE	
X.XXX ± 0.010	FINISH 125 $\sqrt{Ra}$	DEL TO		DATE RECD.	
DO NOT SCALE PRINT		SURFACE TREATMT		LHC IR FEEDBOX	
THREADS ARE CLASS 2		IDENT METHOD TAG		CRYOGENICS	
CHAMFER ENDS OF ALL SCREW THREADS 30°		PROJECT NUMBER		BRAIDED FLEX HOSE, 1/2" ID X 4" LIVE LENGTH, 12mm X 1/2" ELBOW WELD ENDS	
CUT ROUND, 1.5 THREAD RELIEF ON MACHINED THREADS		PROJECT NAME		MICROFILMED:	
BREAK EDGES .016 MAX. ON MACHINED WORK		DWG BY A. HARRIS		DWG. TYPE PART	
REMOVE BURRS, WELD SPLATTER & LOOSE SCALE		CHK BY J. ZBASNIK		SHOWN ON VARIOUS	
IN ACCORDANCE WITH ASME Y14.5M & B46.1		APR BY J. ZBASNIK		SCALE: 3/4	
		DATE 13-Jul-02		SHEET 1 OF 1	
				DO NOT SCALE PRINTS	
				PATENT CLEAR:	
				DESIGN ACCT. NO. Z5LCE2	
				CATEGORY CODE LH2003	
				DWG. NO. 2516523	
				SIZE A	
				REV. 1	

DWG. NO. 2516523 SIZE REV. 1