

Daryl Oshatz

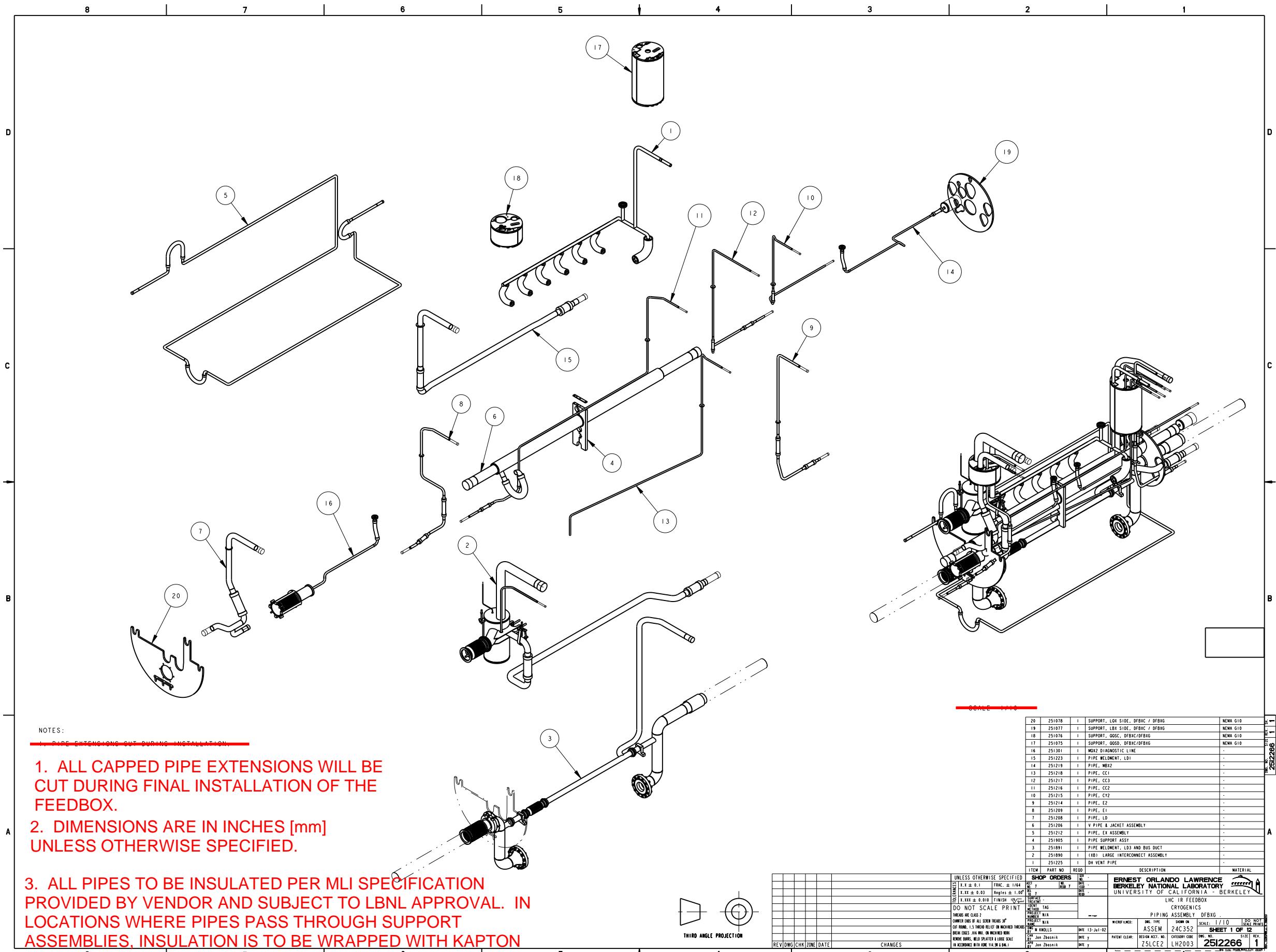
Tom Peterson

DULIE-

General comments:

1) call out metric tube in round metric dims on the pipe details.

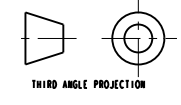
2) I haven't marked up sheets 10-12 in great detail because we haven't decided whether to cut them out of the package. Any details and dims we leave at that this level should be reference.



NOTES:

~~PIPE EXTENSIONS CUT DURING INSTALLATION~~

1. ALL CAPPED PIPE EXTENSIONS WILL BE CUT DURING FINAL INSTALLATION OF THE FEEDBOX.
2. DIMENSIONS ARE IN INCHES [mm] UNLESS OTHERWISE SPECIFIED.
3. ALL PIPES TO BE INSULATED PER MLI SPECIFICATION PROVIDED BY VENDOR AND SUBJECT TO LBNL APPROVAL. IN LOCATIONS WHERE PIPES PASS THROUGH SUPPORT ASSEMBLIES, INSULATION IS TO BE WRAPPED WITH KAPTON TAPE FOR PROTECTION FROM ABRASION DURING THERMAL CYCLING.



REV	DATE	BY	CHK	DESCRIPTION

ITEM	PART NO	REQD	DESCRIPTION	MATERIAL
20	251078	1	SUPPORT, LHX SIDE, DFBAC / DFBAG	NEMA GIO
19	251077	1	SUPPORT, LBY SIDE, DFBAC / DFBAG	NEMA GIO
18	251076	1	SUPPORT, QOSC, DFBAC/DFBAG	NEMA GIO
17	251075	1	SUPPORT, QOSD, DFBAC/DFBAG	NEMA GIO
16	251201	1	NOZZLE DIAGNOSTIC LINE	-
15	251223	1	PIPE WELMENT, LDI	-
14	251219	1	PIPE, MBR2	-
13	251218	1	PIPE, CC1	-
12	251217	1	PIPE, CC3	-
11	251216	1	PIPE, CC2	-
10	251215	1	PIPE, CY2	-
9	251214	1	PIPE, E2	-
8	251209	1	PIPE, E1	-
7	251208	1	PIPE, LD	-
6	251206	1	V PIPE & JACKET ASSEMBLY	-
5	251212	1	PIPE, EX ASSEMBLY	-
4	251905	1	PIPE SUPPORT ASSY	-
3	251091	1	PIPE WELMENT, LDI AND BUS DUCT	-
2	251090	1	LHX - LARGE INTERCONNECT ASSEMBLY	-
1	251225	1	DN VENT PIPE	-

UNLESS OTHERWISE SPECIFIED
 X.X ± 0.1 FRACTION ± 1/64
 X.XX ± 0.03 Angles ± 1.00°
 X.XXX ± 0.010 FINISH
 DO NOT SCALE PRINT
 THREADS PER CLASS 2
 CORNER RADIUS OF ALL CORNERS 3/16"
 CAP NOMINAL 1.5 THICK RELIEF ON MACHINED THREADS
 HOLE DRILL 5% DIA. ON MACHINED HOLES
 REMOVE BURRS, WELD SPATTER & LOOSE SCALE
 IN ACCORDANCE WITH HOW-TO'S IN 8.046.1

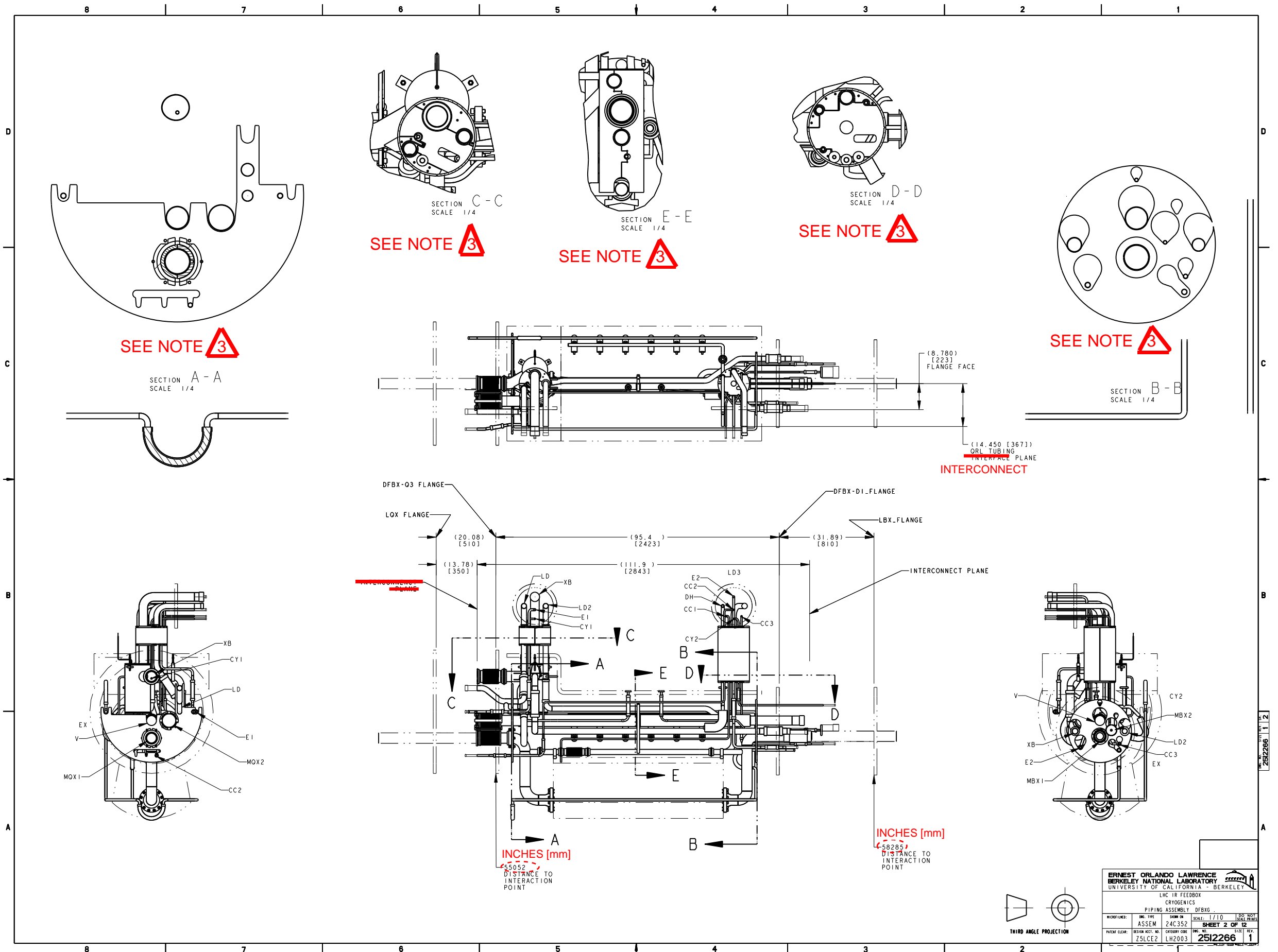
SHOP ORDERS
 DATE: 13-Jul-02
 BY: W. Knolls
 CHECKED: Jan Zbosnik
 DATE: y
 BY: Jan Zbosnik
 DATE: y

ERNEST ORLANDO LAWRENCE
 BERKELEY NATIONAL LABORATORY
 UNIVERSITY OF CALIFORNIA - BERKELEY

LHC IR FEEDBOX
 CRYOGENICS
 PIPING ASSEMBLY, DFBAG

SCALE: 1/10
 SHEET 1 OF 12
 2512266

NAME: ARHARRIS OBJECT: 251226_1 DATE: 13-Jul-02 20:36:39

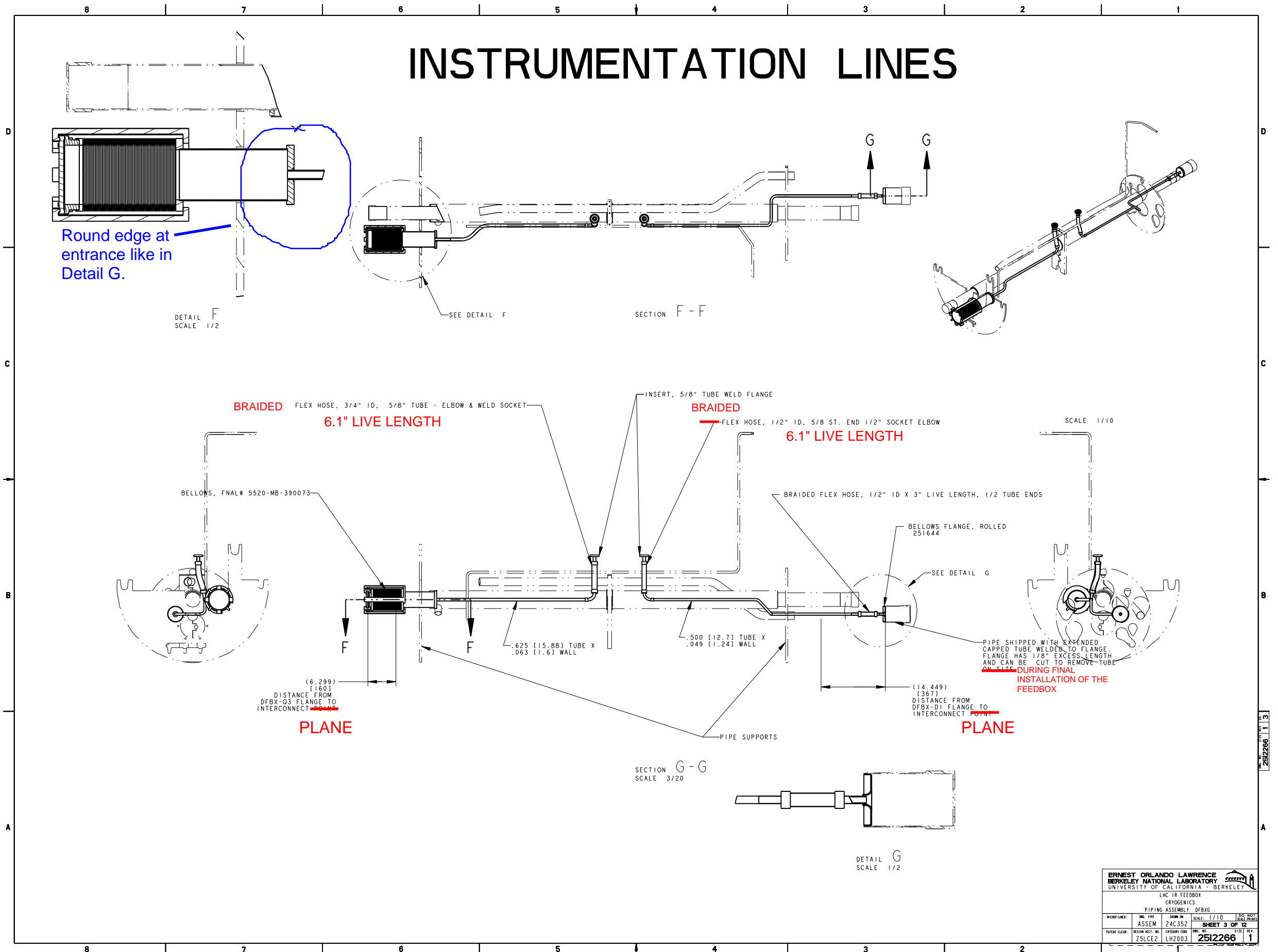


ERNEST ORLANDO LAWRENCE BERKELEY NATIONAL LABORATORY UNIVERSITY OF CALIFORNIA - BERKELEY			
LHC IR FEEDBOX CRYogenics			
PIPING ASSEMBLY DFBX			
DRG. TYPE	SCALE	NO. OF SHEETS	NO. OF THIS SHEET
ASSEM	1/10	12	2
DESIGN NO.	CATEGORY CODE	DRG. NO.	REV.
ZSLCE2	LH2003	2512266	1

2512266 1 1 2

NAME: ARHARRIS OBJECT: 251226_3 DATE: 13-Jul-02 20:37:56

INSTRUMENTATION LINES

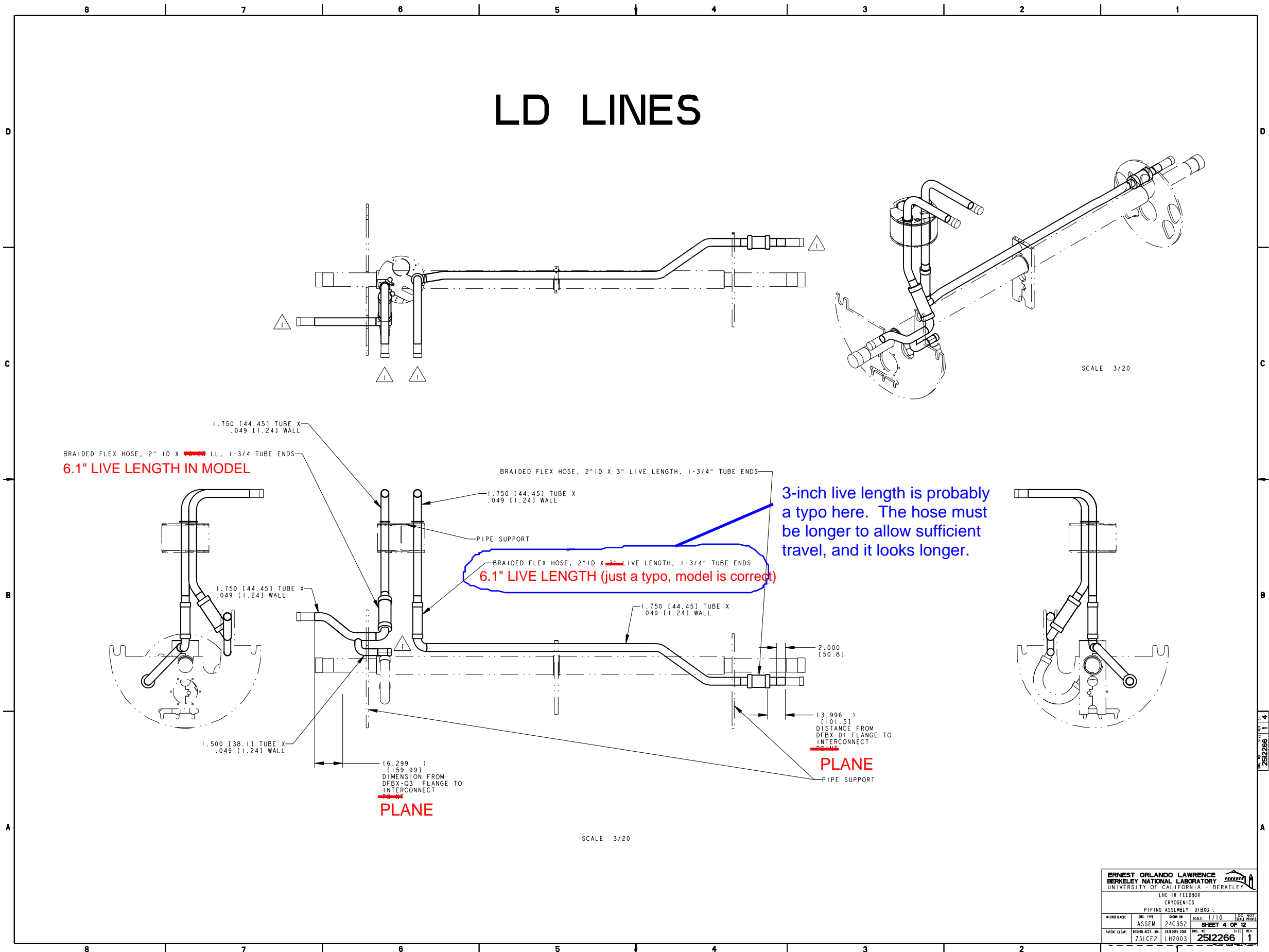


ERNEST ORLANDO LAWRENCE BERKELEY NATIONAL LABORATORY UNIVERSITY OF CALIFORNIA - BERKELEY			
LHC IR FEEDBOX CRYogenics			
PIPING ASSEMBLY, DFBIG			
WORK LEVEL:	DESIGN TYPE:	SHOW OR:	SCALE: 1/10
ASSEM	24C352		SHEET 3 OF 12
PATENT CLEAR:	DESIGN ACCT. NO.:	CATEGORY CODE:	DRW. NO.:
ZSLCEZ	LH2003		2512266

2512266 1 13

NAME: ARHARRIS OBJECT: 251226_4 DATE: 13-Jul-02 20:38:30

LD LINES



BRAIDED FLEX HOSE, 2" ID X ~~3~~ LL, 1-3/4" TUBE ENDS
6.1" LIVE LENGTH IN MODEL

BRAIDED FLEX HOSE, 2" ID X ~~3~~ LIVE LENGTH, 1-3/4" TUBE ENDS
6.1" LIVE LENGTH (just a typo, model is correct)

3-inch live length is probably a typo here. The hose must be longer to allow sufficient travel, and it looks longer.

PLANE

PLANE

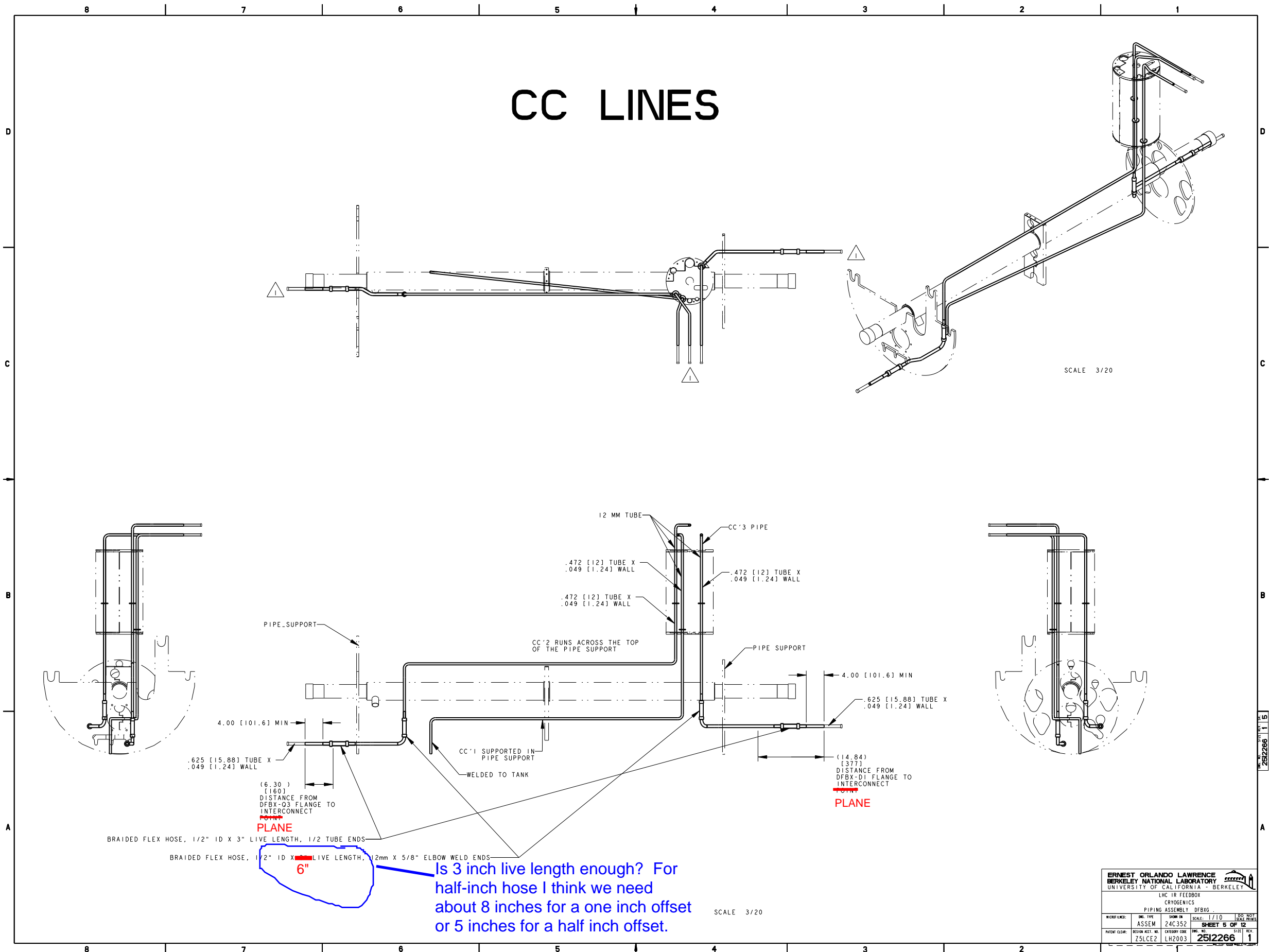
SCALE 3/20

SCALE 3/20

ERNEST ORLANDO LAWRENCE BERKELEY NATIONAL LABORATORY UNIVERSITY OF CALIFORNIA - BERKELEY			
LHC IR FEEDBOX CRYogenics			
PIPING ASSEMBLY, DFBIG			
WORK NUMBER:	DESIGN NO:	SCALE:	SHEET NO:
ASSEM	24C352	1/10	4 OF 12
PATENT CLEAR:	DESIGN ACCT. NO:	CATEGORY CODE:	REV. NO.:
ZSLCEZ	LH2003	2512266	1

NAME: ARHARRIS OBJECT: 251226_5 DATE: 13-Jul-02 20:38:33

CC LINES



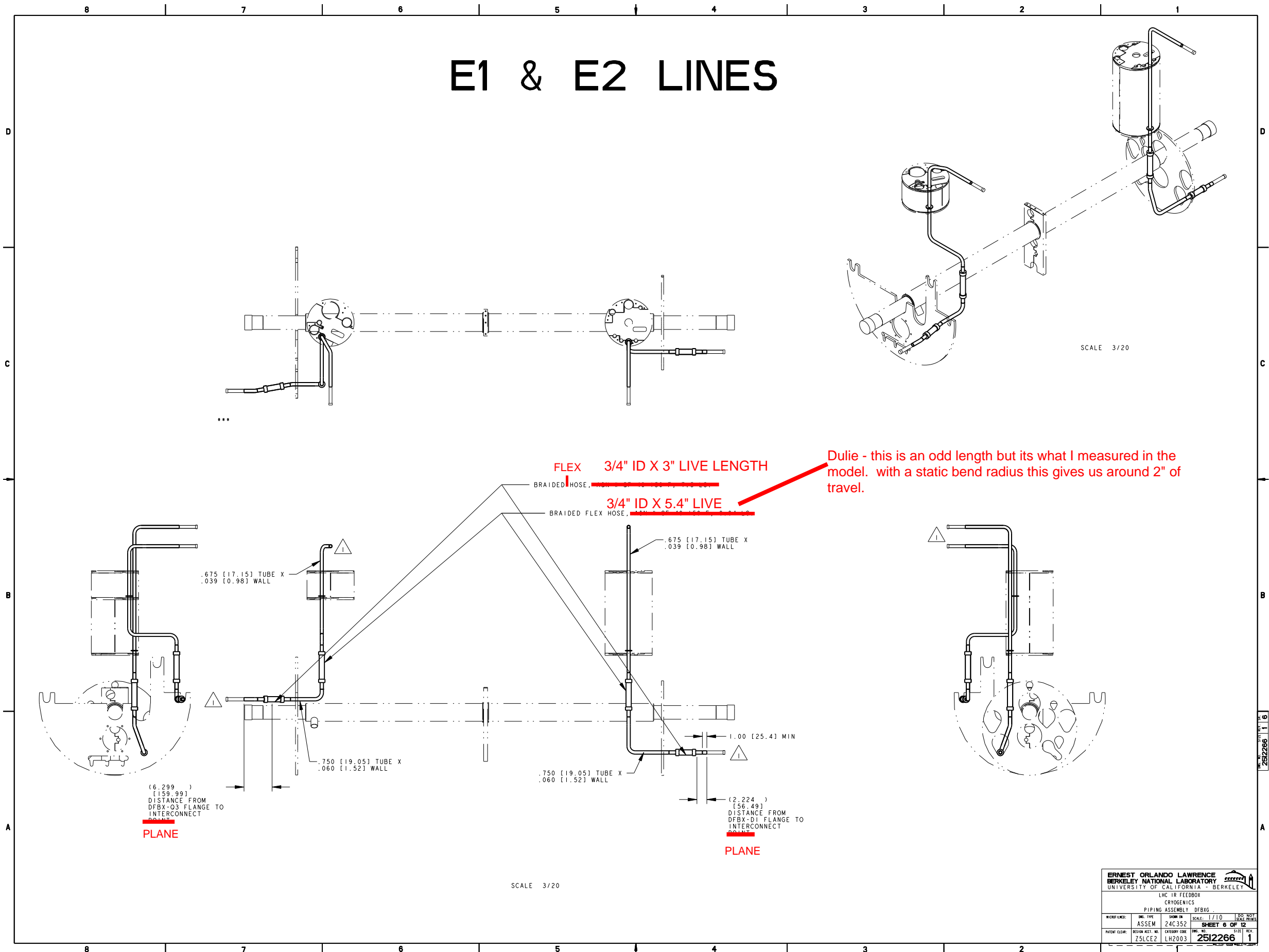
SCALE 3/20

SCALE 3/20

ERNEST ORLANDO LAWRENCE BERKELEY NATIONAL LABORATORY UNIVERSITY OF CALIFORNIA - BERKELEY			
LHC IR FEEDBOX CRYOGENICS			
PIPING ASSEMBLY DFBX			
DESIGNER:	DATE:	SCALE:	SHEET NO.
ASSEM	24C352	1/10	5 OF 12
PATENT CLEAR:	DESIGN ACCT. NO.:	CATEGORY CODE:	REV. NO.:
ZSLCEZ	LH2003	2512266	1

NAME: ARHARRIS OBJECT: 251226_6 DATE: 13-Jul-02 20:38:37

E1 & E2 LINES

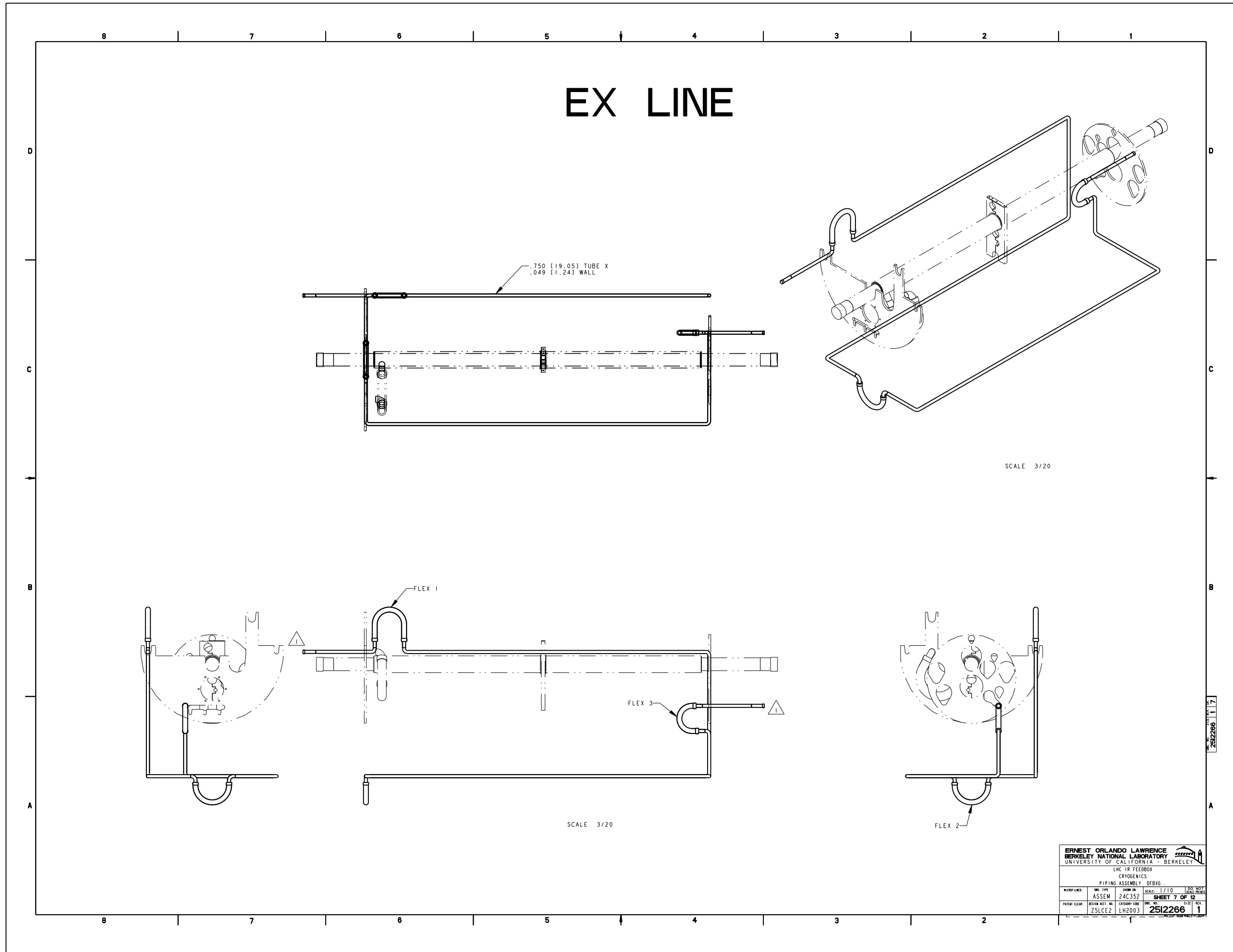


Dulie - this is an odd length but its what I measured in the model. with a static bend radius this gives us around 2" of travel.

ERNEST ORLANDO LAWRENCE BERKELEY NATIONAL LABORATORY UNIVERSITY OF CALIFORNIA - BERKELEY			
LHC IR FEEDBOX CRYogenics			
PIPING ASSEMBLY, DFBIG			
DRG. TYPE	SHOW OR	SCALE	250
ASSEM	24C352	1/10	INCH
PATENT CLEAR.	DESIGN ACCT. NO.	CATEGORY CODE	DRG. NO.
ZSLCEZ	LH2003	2512266	1

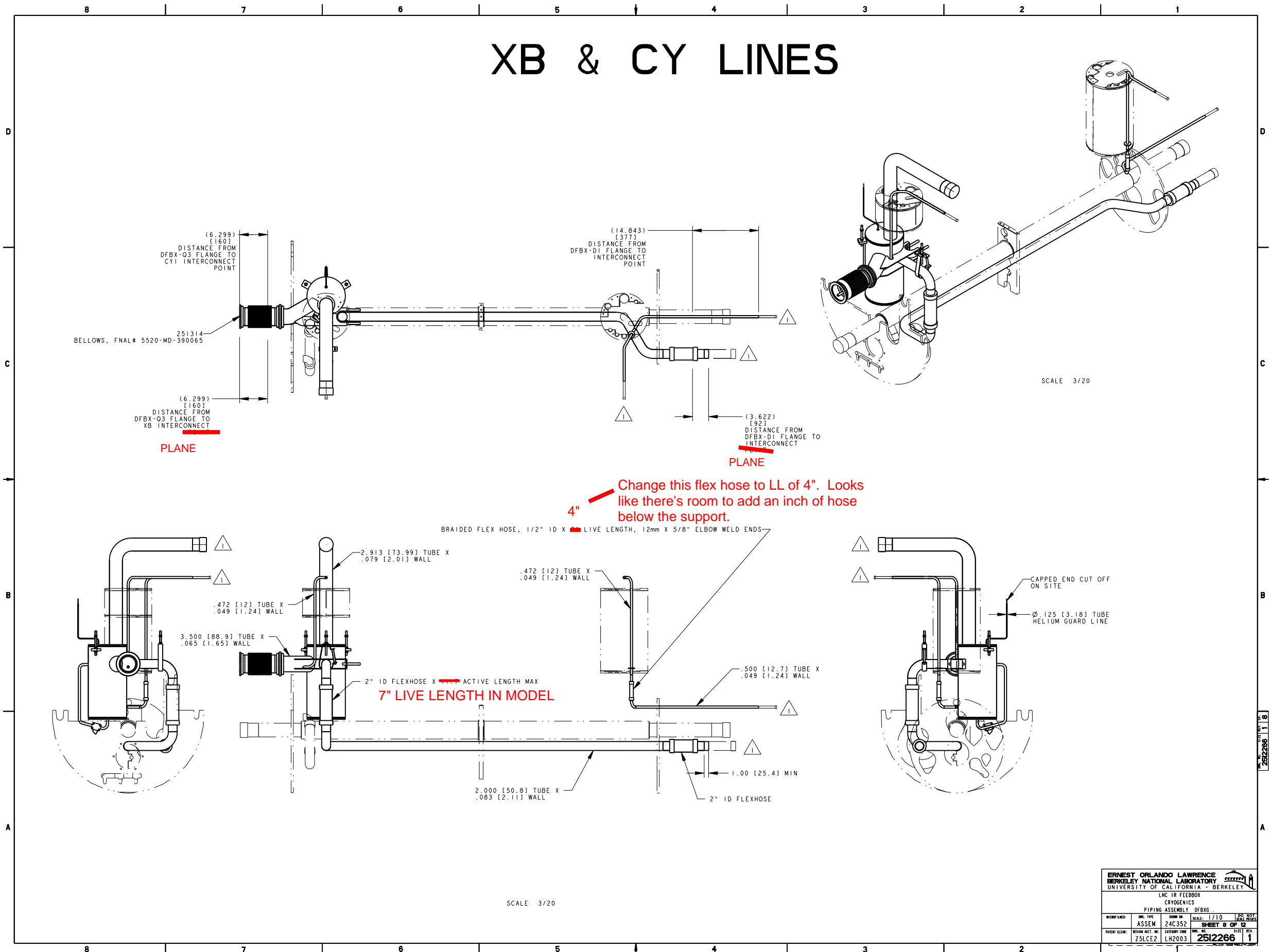
2512266 1 6

NAME: ARHARRIS OBJECT: 251226_7 DATE: 13-Jul-02 20:38:40



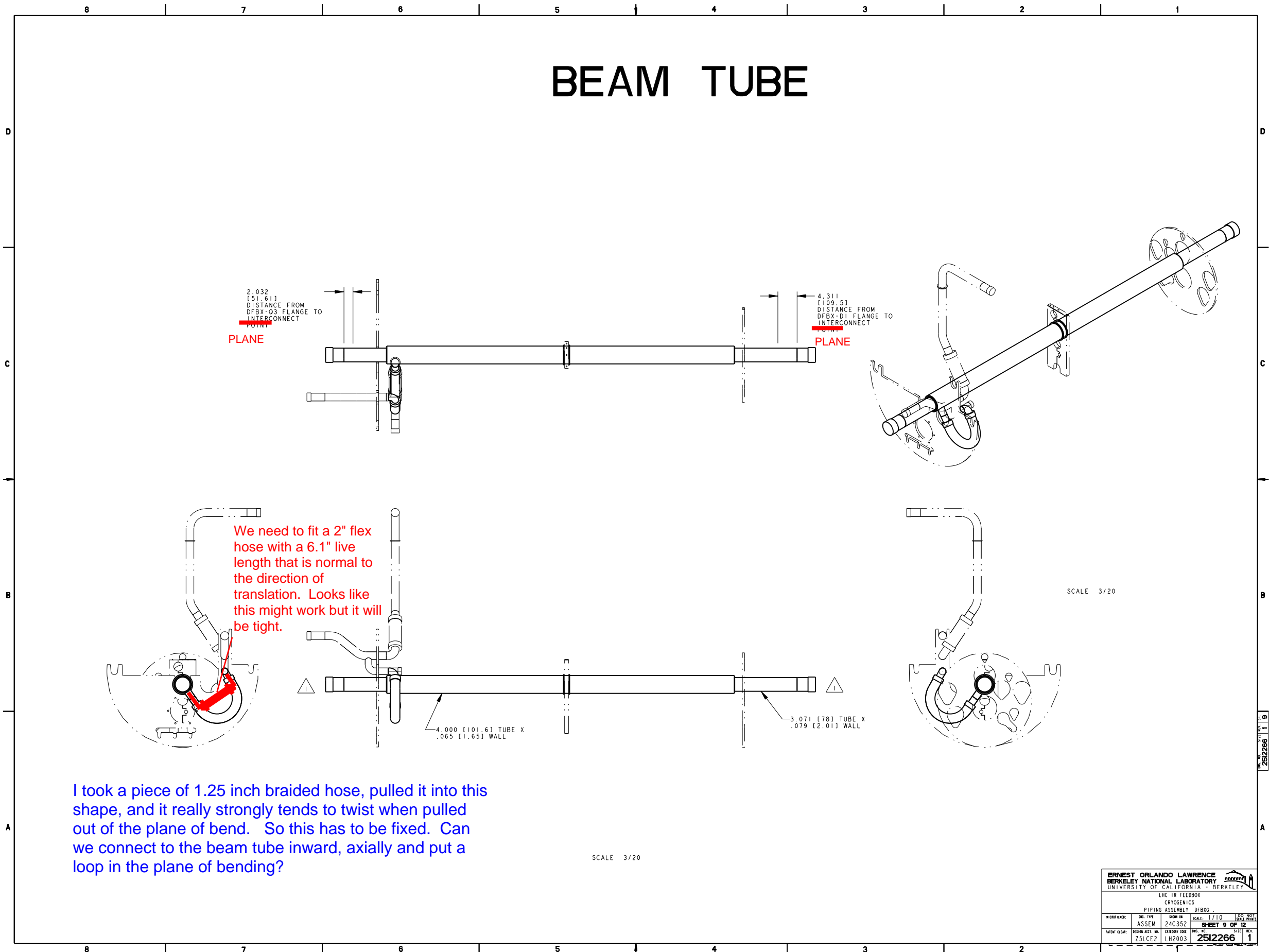
NAME: ARHARRIS OBJECT: 251226_8 DATE: 13-Jul-02 20:38:43

XB & CY LINES



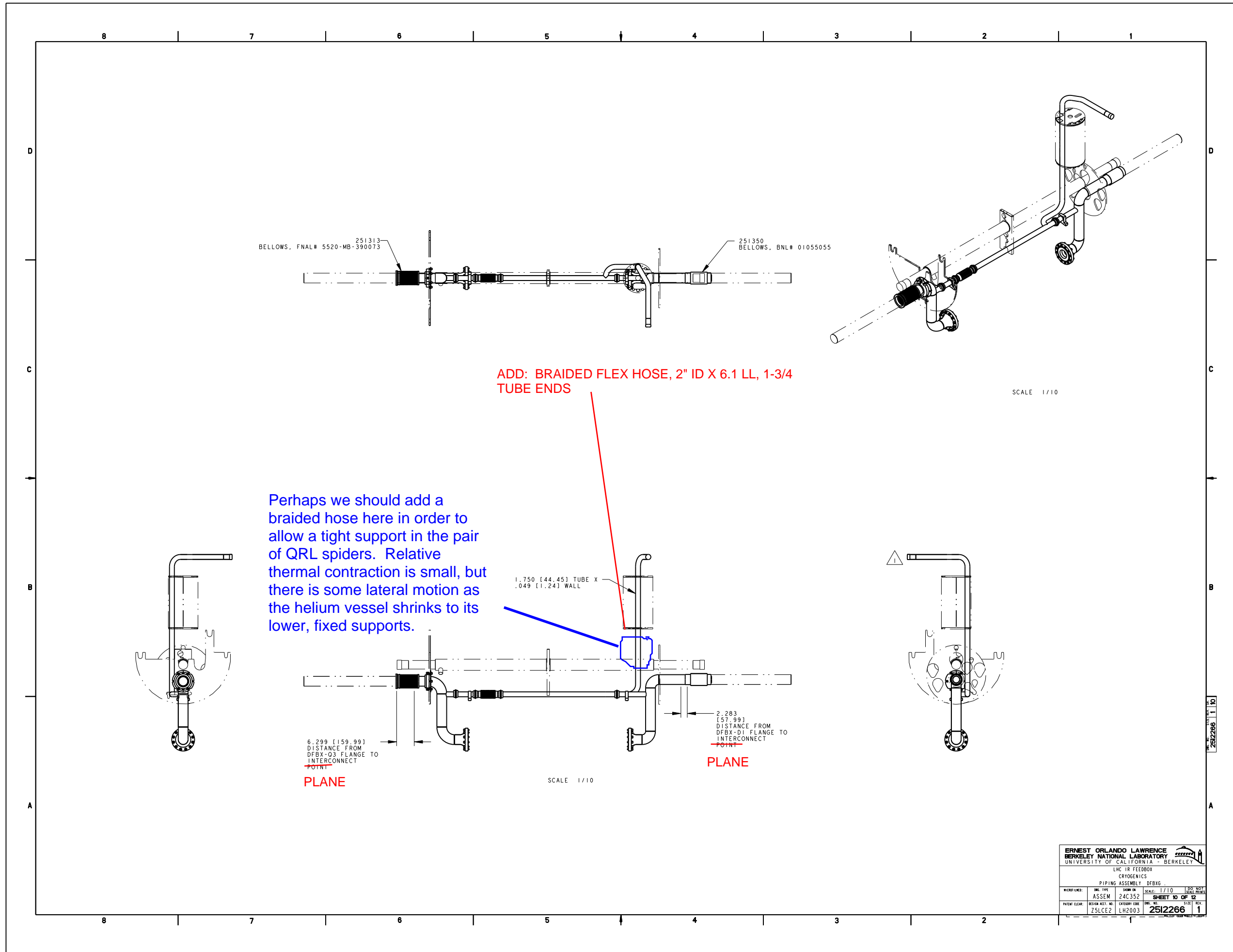
ERNEST ORLANDO LAWRENCE BERKELEY NATIONAL LABORATORY UNIVERSITY OF CALIFORNIA - BERKELEY			
LHC IR FEEDBOX CRYogenics			
PIPING ASSEMBLY DFBIG			
DESIGNER:	DATE:	SCALE:	SHEET NO.:
ASSEM	24C352	1/10	8 OF 12
DESIGN NO.:	CATEGORY CODE:	DRG. NO.:	SIZE:
ZSLCEZ	LH2003	2512266	1

BEAM TUBE

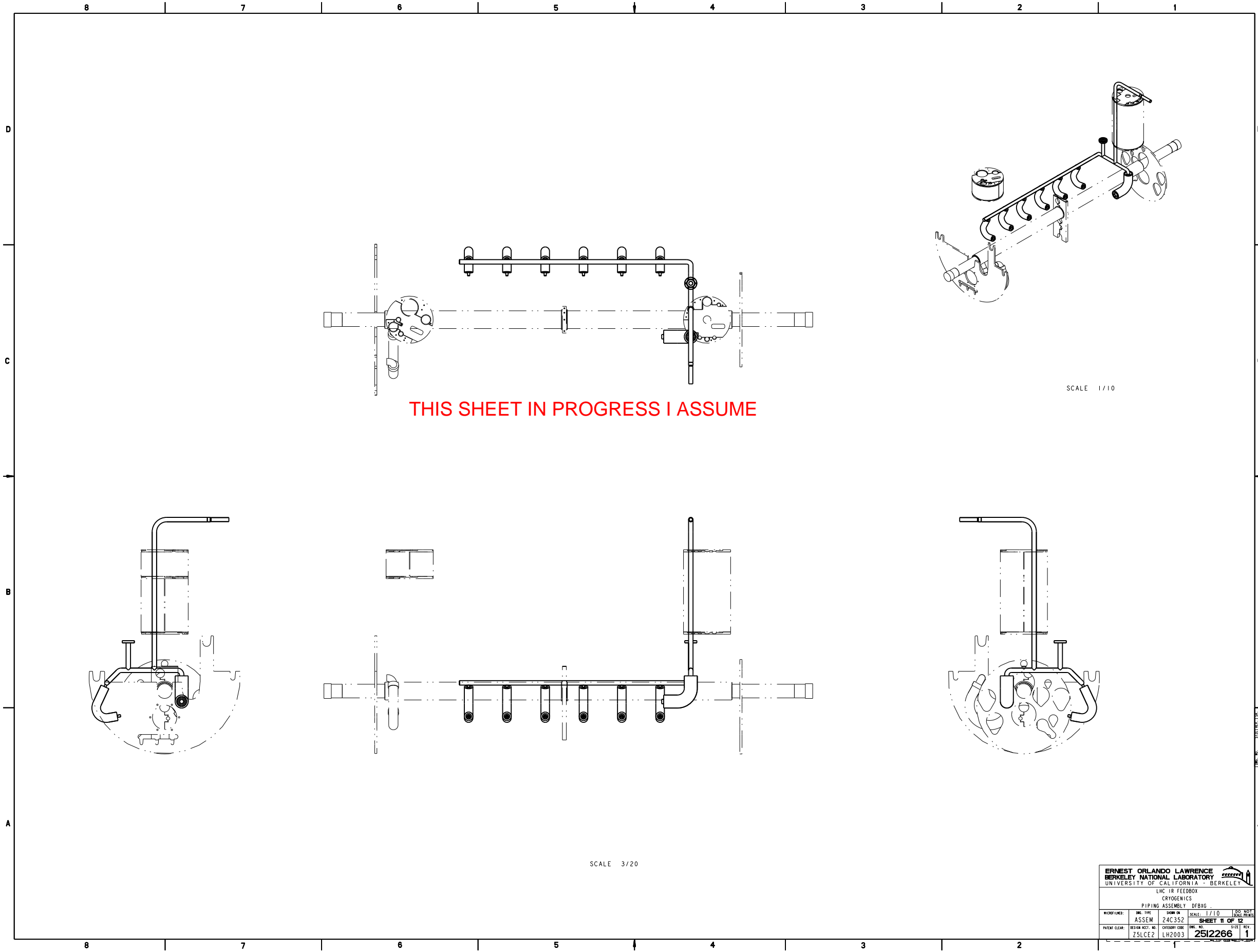


I took a piece of 1.25 inch braided hose, pulled it into this shape, and it really strongly tends to twist when pulled out of the plane of bend. So this has to be fixed. Can we connect to the beam tube inward, axially and put a loop in the plane of bending?

ERNEST ORLANDO LAWRENCE BERKELEY NATIONAL LABORATORY UNIVERSITY OF CALIFORNIA - BERKELEY			
LHC IR FEEDBOX CRYogenics			
PIPING ASSEMBLY DFBIG			
WORK NUMBER:	DESIGN TYPE:	SHOW OR:	SCALE:
PATENT CLEAR:	DESIGN ACCT. NO.:	CATEGORY CODE:	DRW. NO.:
	251226	LH2003	2512266
			1



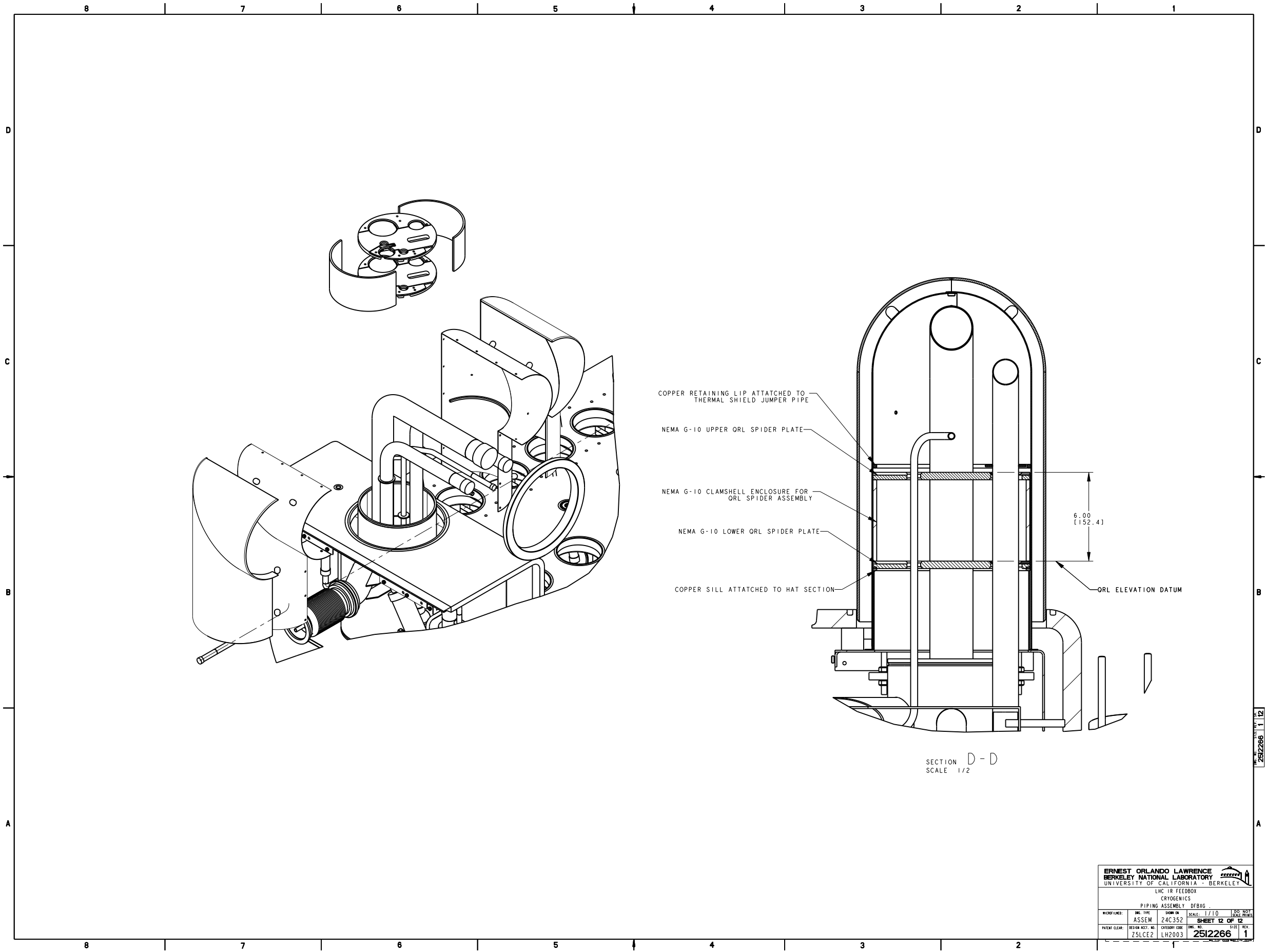
ERNEST ORLANDO LAWRENCE BERKELEY NATIONAL LABORATORY UNIVERSITY OF CALIFORNIA - BERKELEY			
LHC IR FEEDBOX CRYOGENICS			
PIPING ASSEMBLY DFBX			
MICRO LEVEL: ASSEM	DWG. TYPE: 24C352	SHOW OR: SCALE: 1/10	SHEET NO. OF 12 SHEET 10 OF 12
PATENT CLEAR: ZSLCEZ	DESIGN ACCT. NO.: LH2003	DWG. NO.: 2512266	SIZE: 1



ERNEST ORLANDO LAWRENCE BERKELEY NATIONAL LABORATORY UNIVERSITY OF CALIFORNIA - BERKELEY			
LHC IR FEEDBOX CRYOGENICS			
PIPING ASSEMBLY DFRIG			
WORK NUMBER:	DESIGN TYPE:	SHOW ON:	SCALE: 1/10
ASSEM	24C352		SHEET 11 OF 12
PATENT CLEAR:	DESIGN ACCT. NO.:	CATEGORY CODE:	DRG. NO.:
ZSLCEZ	LH2003	2512266	1

2512266

NAME: ARHARRIS OBJECT: 251226_12 DATE: 13-Jul-02 20:39:43



SECTION D-D
SCALE 1/2

ERNEST ORLANDO LAWRENCE BERKELEY NATIONAL LABORATORY UNIVERSITY OF CALIFORNIA - BERKELEY			
LHC IR FEEDBOX CRYOGENICS			
PIPING ASSEMBLY DFRIG			
DESIGNER:	DATE:	SCALE:	SHEET NO. OF TOTAL SHEETS
ASSEM	24C352	1/10	12 OF 12
PATENT CLEAR:	DESIGN ACCT. NO.:	CATEGORY CODE:	REV. NO.:
ZSLCEZ	LH2003	2512266	1