

- NOTES:
1. ALL CAPPED PIPE EXTENSIONS WILL BE CUT DURING FINAL INSTALLATION OF THE FEEDBOX.
 2. DIMENSIONS ARE IN INCHES (mm) UNLESS OTHERWISE SPECIFIED.
 3. ALL PIPES TO BE INSULATED PER MLI SPECIFICATION PROVIDED BY VENDOR AND SUBJECT TO LBNL APPROVAL. IN LOCATIONS WHERE PIPES PASS THROUGH SUPPORT ASSEMBLIES, INSULATION IS TO BE WRAPPED WITH KAPTON TAPE FOR PROTECTION FROM ABRASION DURING THERMAL CYCLING.

SCALE 1/8

ITEM	PART NO.	QTY	DESCRIPTION	MATERIAL
20	251078	1	SUPPORT, LOW SIDE, DFBG / DFBG	NEMA G10
19	251077	1	SUPPORT, LOW SIDE, DFBG / DFBG	NEMA G10
18	251074	1	SUPPORT, OSGC, DFBG/DFBG	NEMA G10
17	251075	1	SUPPORT, OSGC, DFBG/DFBG	NEMA G10
16	251301	1	MOZ2 DIAGNOSTIC LINE	-
15	251223	1	PIPE WELDMNT, LOI	-
14	251219	1	PIPE, MOI2	-
13	251218	1	PIPE, CC1	-
12	251217	1	PIPE, CC3	-
11	251216	1	PIPE, CC2	-
10	251215	1	PIPE, CY2	-
9	251214	1	PIPE, E2	-
8	251209	1	PIPE, E1	-
7	251208	1	PIPE, LO	-
6	251206	1	V PIPE & JACKET ASSEMBLY	-
5	251212	1	PIPE, EX ASSEMBLY	-
4	251905	1	PIPE SUPPORT ASST	-
3	251891	1	PIPE WELDMNT, LO3 AND BUS DUCT	-
2	251890	1	1/8" LARGE INTERCONNECT ASSEMBLY	-
1	251225	1	LOW VELOCITY PIPE	-

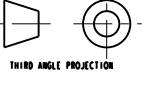
UNLESS OTHERWISE SPECIFIED		SHOP ORDERS	DATE
1. X ± 0.1	FRACTION ± 1/100	DATE	DATE
2. XX ± 0.03	ANGLE ± 1.0°	DATE	DATE
3. XXX ± 0.010	FITNESS	DATE	DATE
DO NOT SCALE PRINT			
CHECK THE CHECKS			
CANNOT USE OF ALL OTHER CHECKS			
OF DIMS. 3. DIMENSIONAL RELIEF ON MACHINED SURF			
FROM DIMS. 3.4 TO 3.6 IN MACHINED DIMS			
FROM DIMS. 3.4 TO 3.6 IN MACHINED DIMS			
FOR DIMENSIONS WITH ONE OR TWO DIMS.			

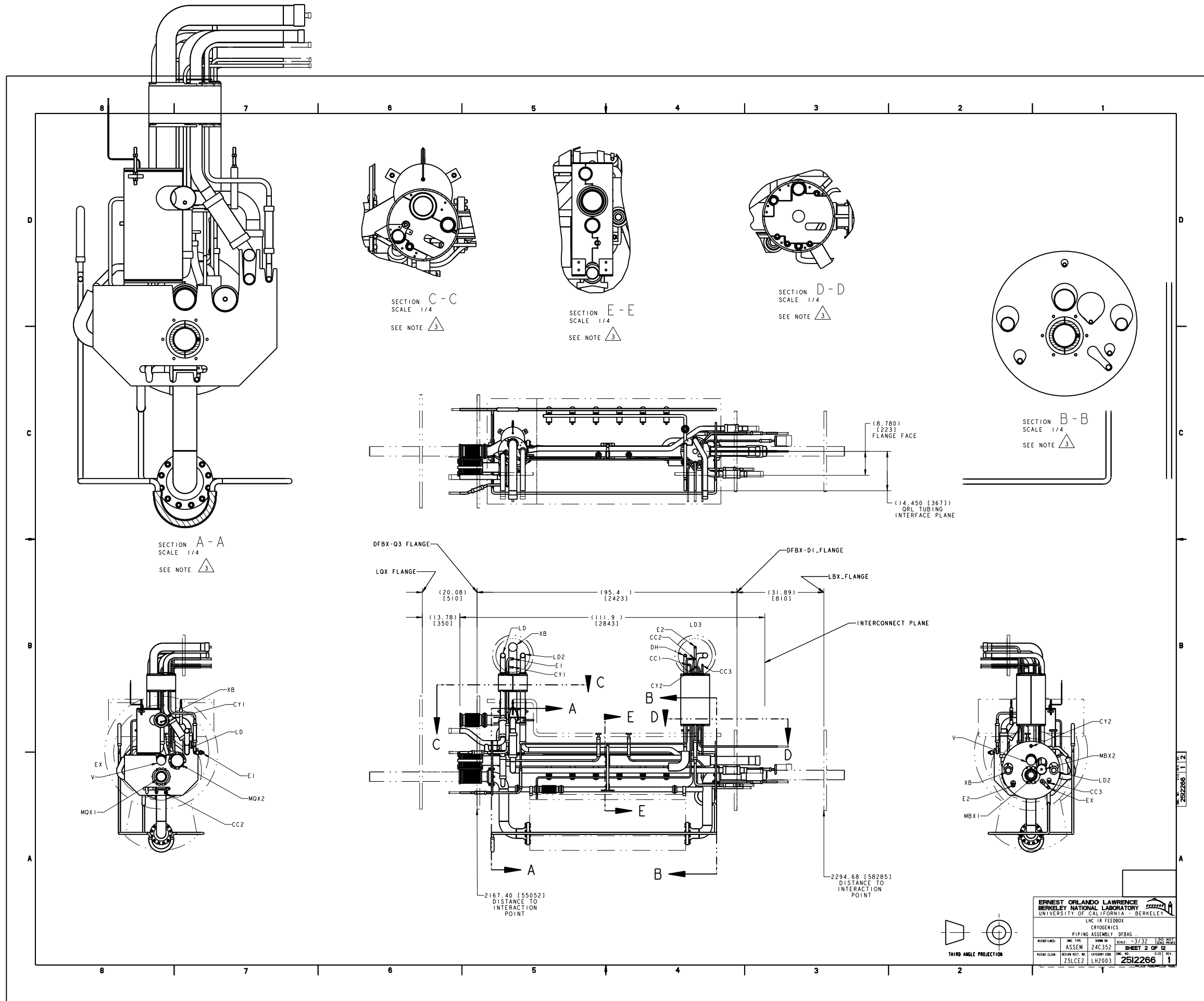
REV	DATE	DESCRIPTION
A	DPO	CHANGES PER PRODUCTION READINESS REVIEW
		CHANGES

ERNEST ORLANDO LAWRENCE
BERKELEY NATIONAL LABORATORY
UNIVERSITY OF CALIFORNIA - BERKELEY

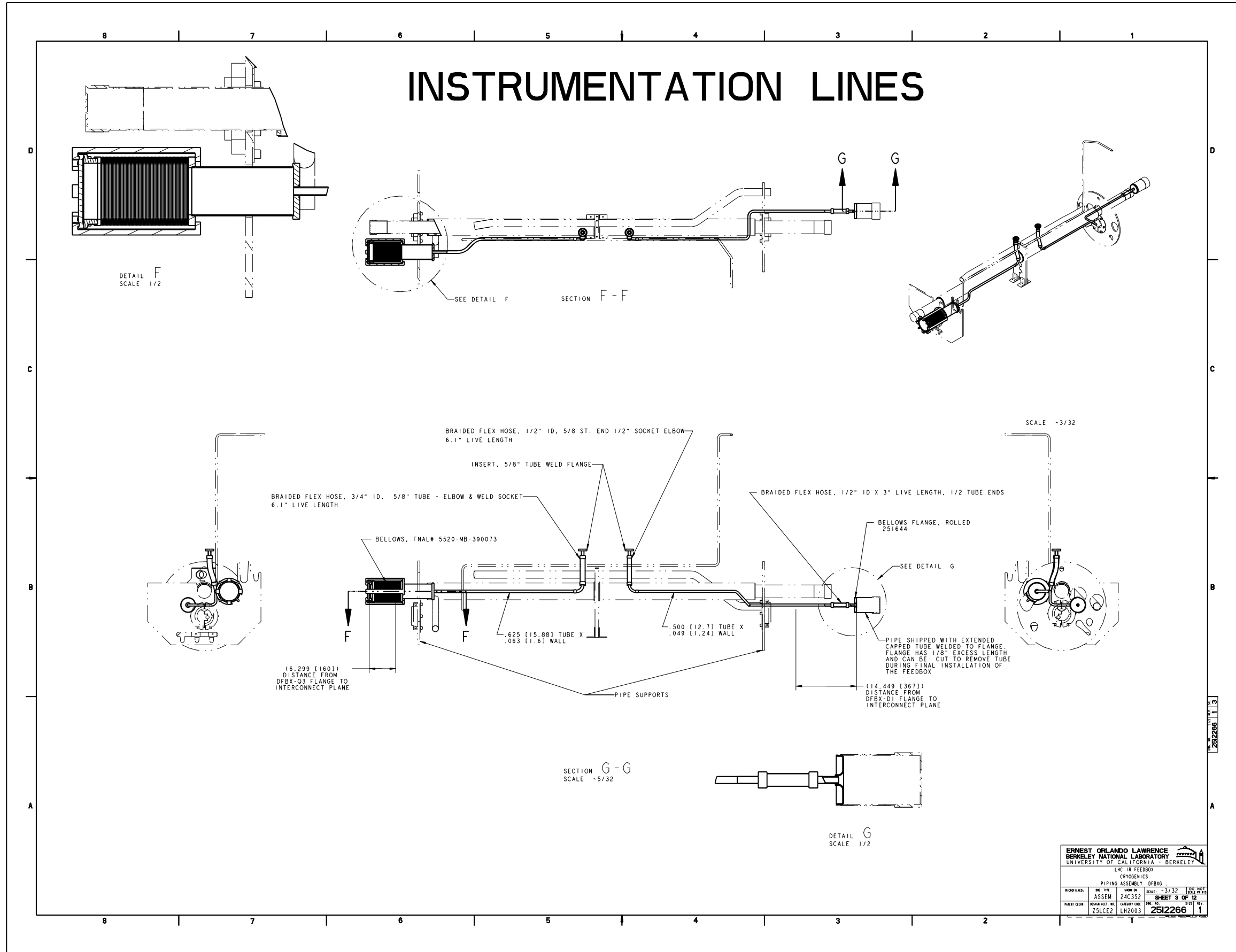
CRYOGENICS
PIPING ASSEMBLY DFBG

ASSEM 24C352 SHEET 1 OF 12
251226



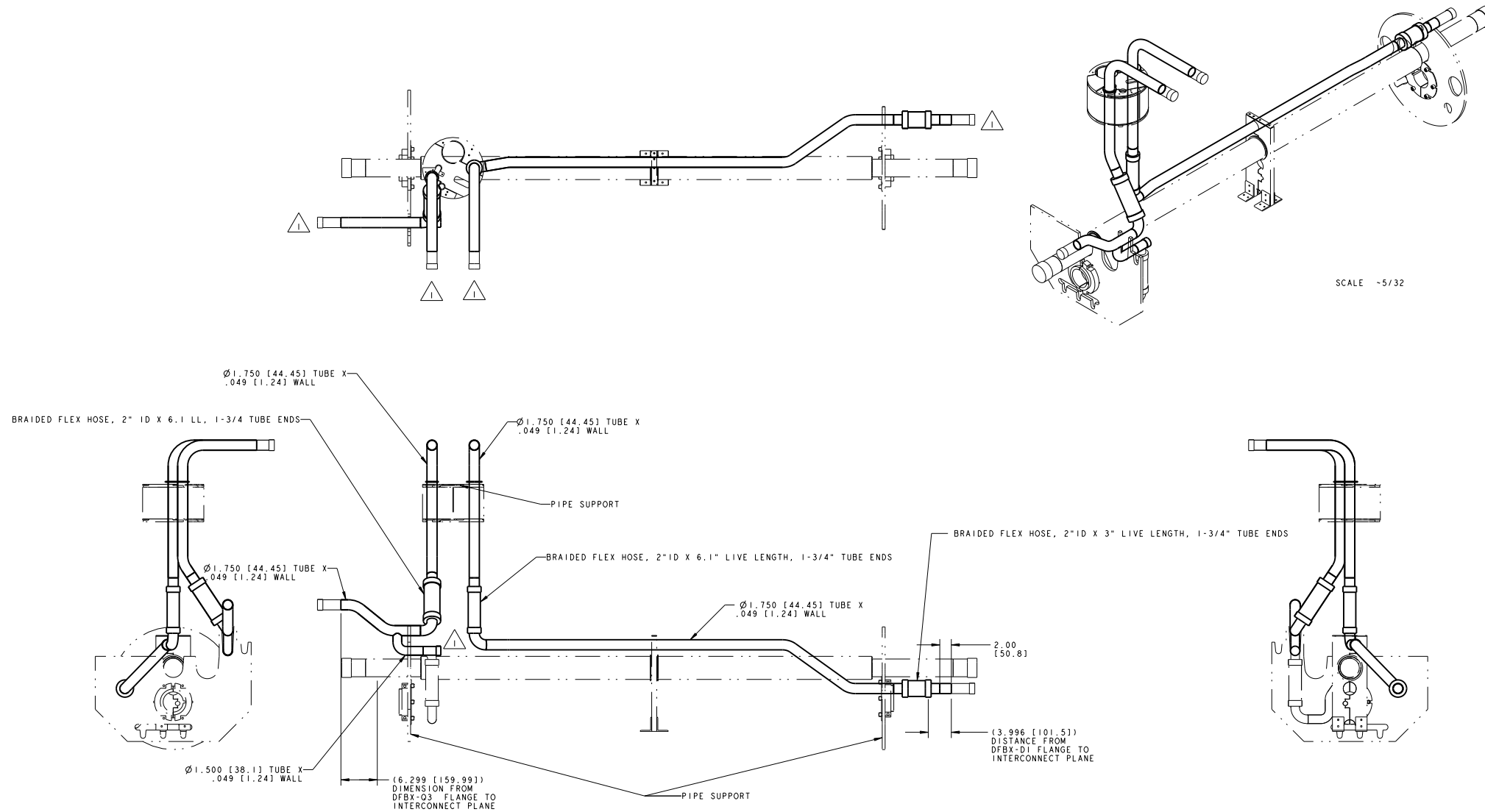


NAME: ARHARRIS OBJECT: 251226_3 DATE: 22-Jul-02 19:14:21



NAME: ARHARRIS OBJECT: 251226_4 DATE: 22-Jul-02 19:14:23

LD LINES

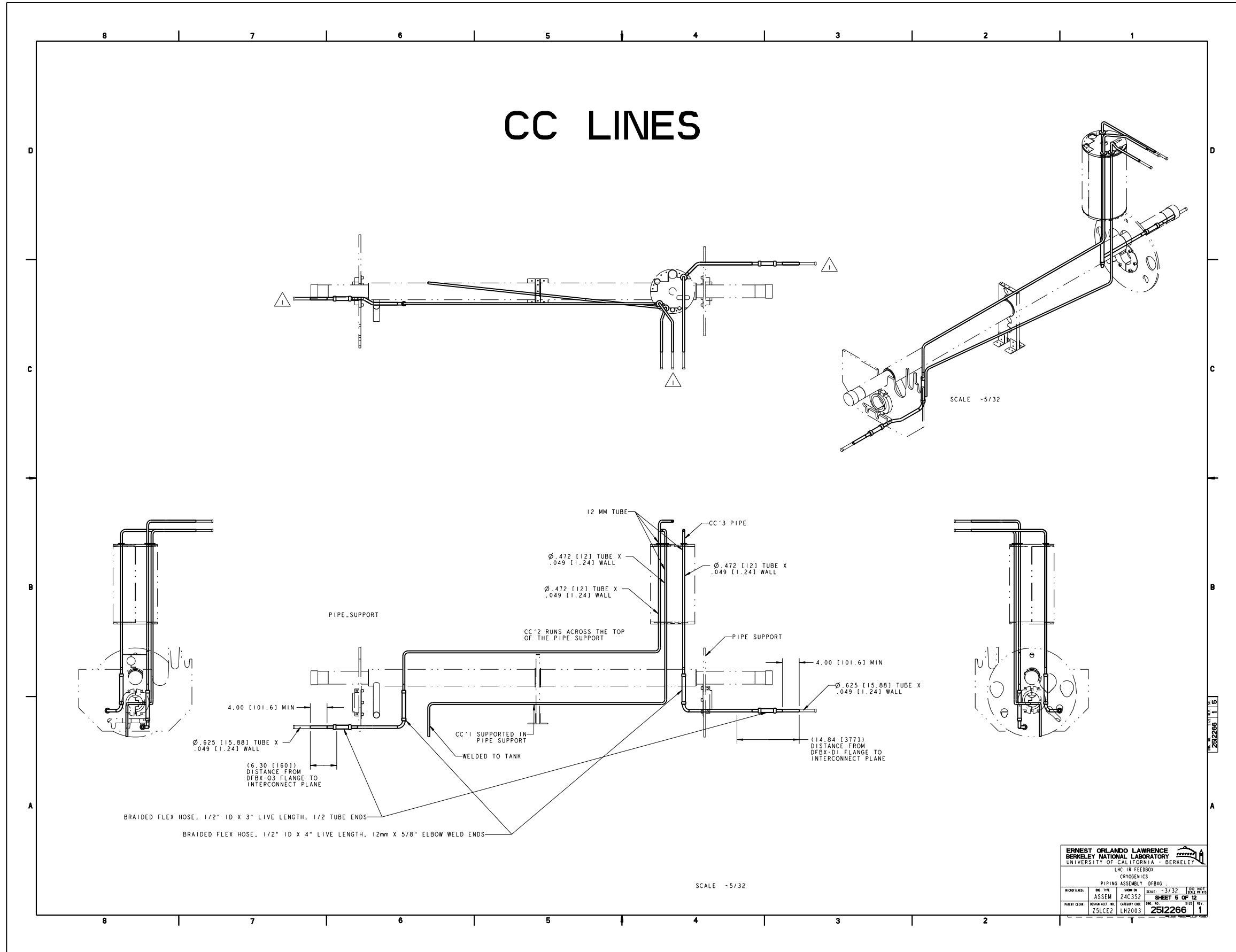


SCALE -5/32

SCALE -5/32

ERNEST ORLANDO LAWRENCE BERKELEY NATIONAL LABORATORY UNIVERSITY OF CALIFORNIA - BERKELEY			
LHC IR FEEDBOX CRYOGENICS			
PIPING ASSEMBLY DFBXG			
WORK NUMBER:	NO. TYPE:	DATE:	REV. NO.:
ASSEM 240352	ASSEM 240352	SCALE: -5/32	REV. 1
PROJECT CODE: ZSLCE2 LH2003		SHEET 4 OF 12	
251226		1	

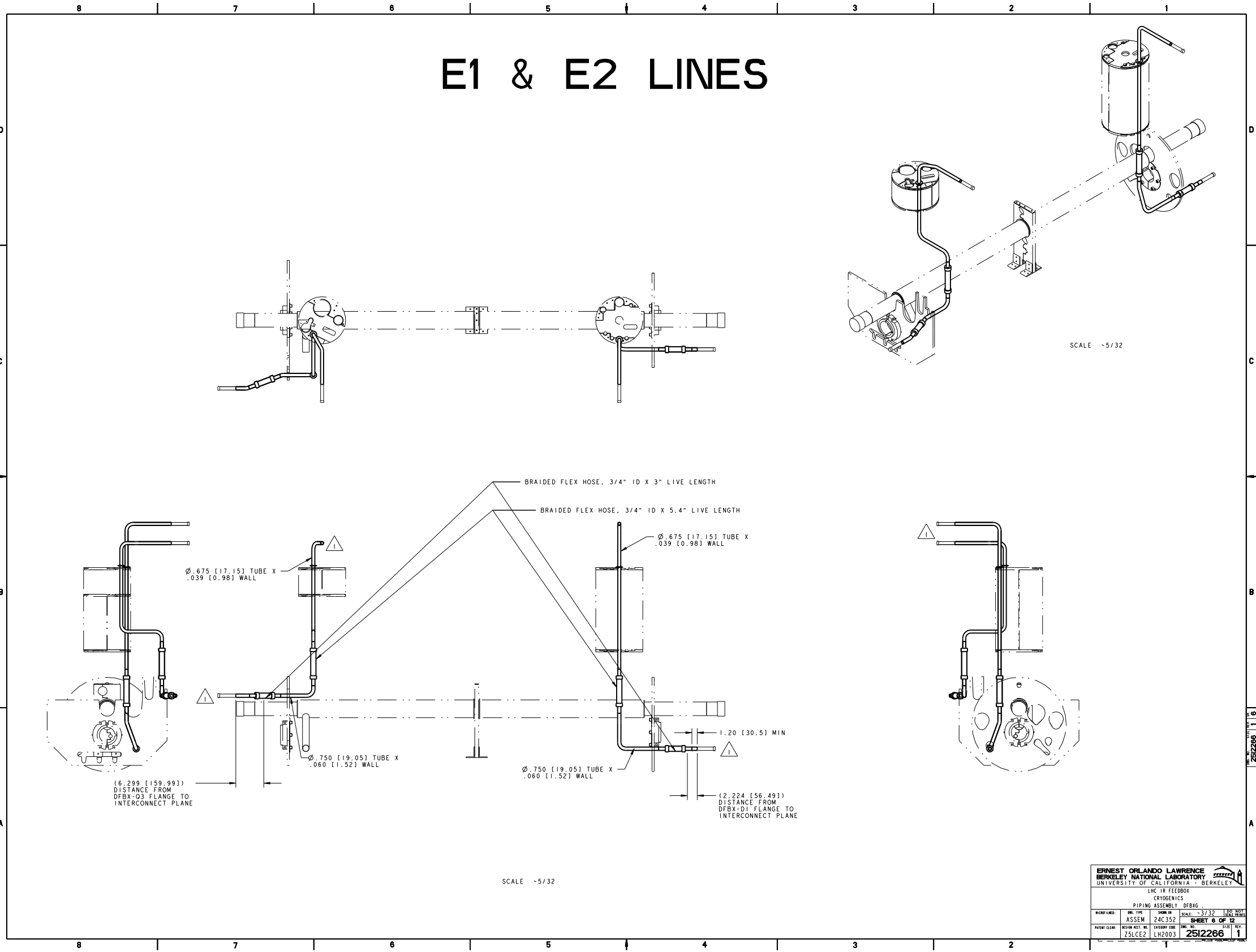
NAME: ARHARRIS OBJECT: 251226_5 DATE: 22-Jul-02 19:14:27



ERNEST ORLANDO LAWRENCE BERKELEY NATIONAL LABORATORY UNIVERSITY OF CALIFORNIA - BERKELEY			
LIC-100 FEEDBOX CRYOGENICS			
PIPING ASSEMBLY DFBX			
NO. TYPE	ASSEM	SCALE: -5/32	DATE: 02/07/02
240352			
SHEET 5 OF 12		2512266 1	

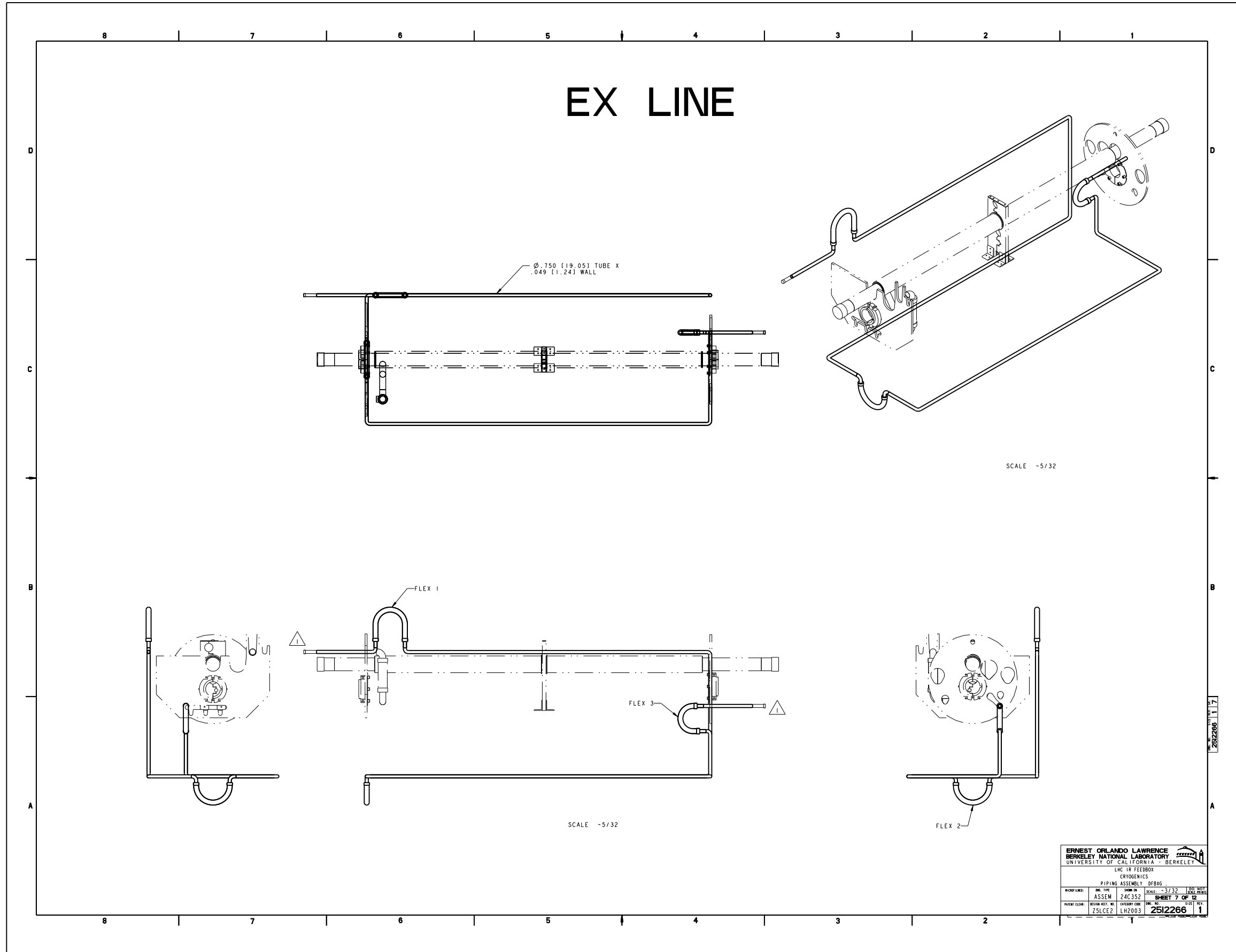
NAME: ARHARRIS OBJECT: 251226_6 DATE: 22-Jul-02 19:14:31

E1 & E2 LINES



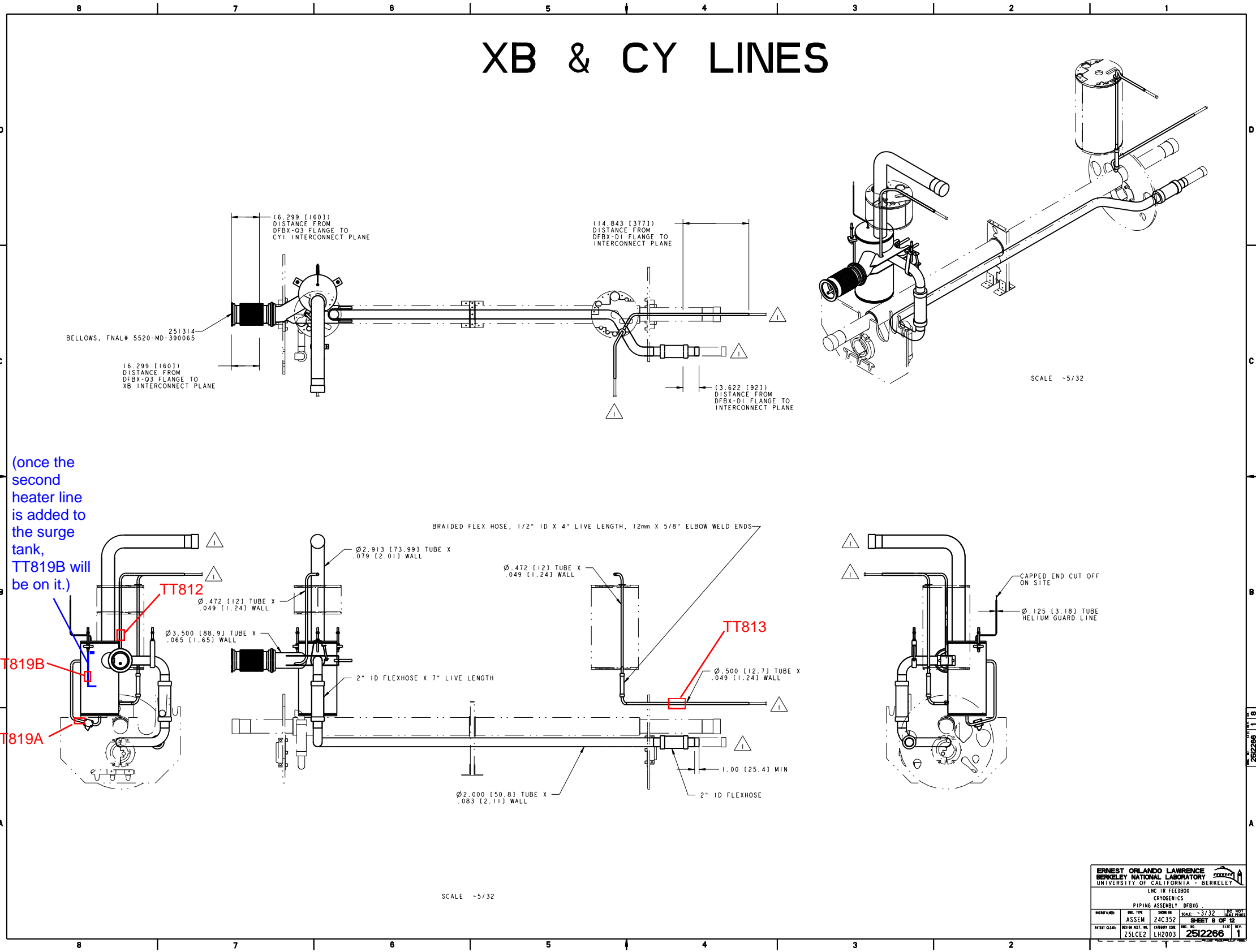
ERNEST ORLANDO LAWRENCE BERKELEY NATIONAL LABORATORY UNIVERSITY OF CALIFORNIA - BERKELEY			
LHC IR FEEDBOX CRYOGENICS			
PIPING ASSEMBLY DFBG			
NO. TYPE	NO. OR	SCALE: ~3/32	REV. DATE
ASSEM	240352		
PROJECT CDR: ZSLCE2		DESIGN CDR: LH2003	NO. 2512266
SHEET 6 OF 12		1	

NAME: ARHARRIS OBJECT: 251226_7 DATE: 22-Jul-02 19:14:36



NAME: ARHARRIS OBJECT: 251226_8 DATE: 22-Jul-02 19:14:40

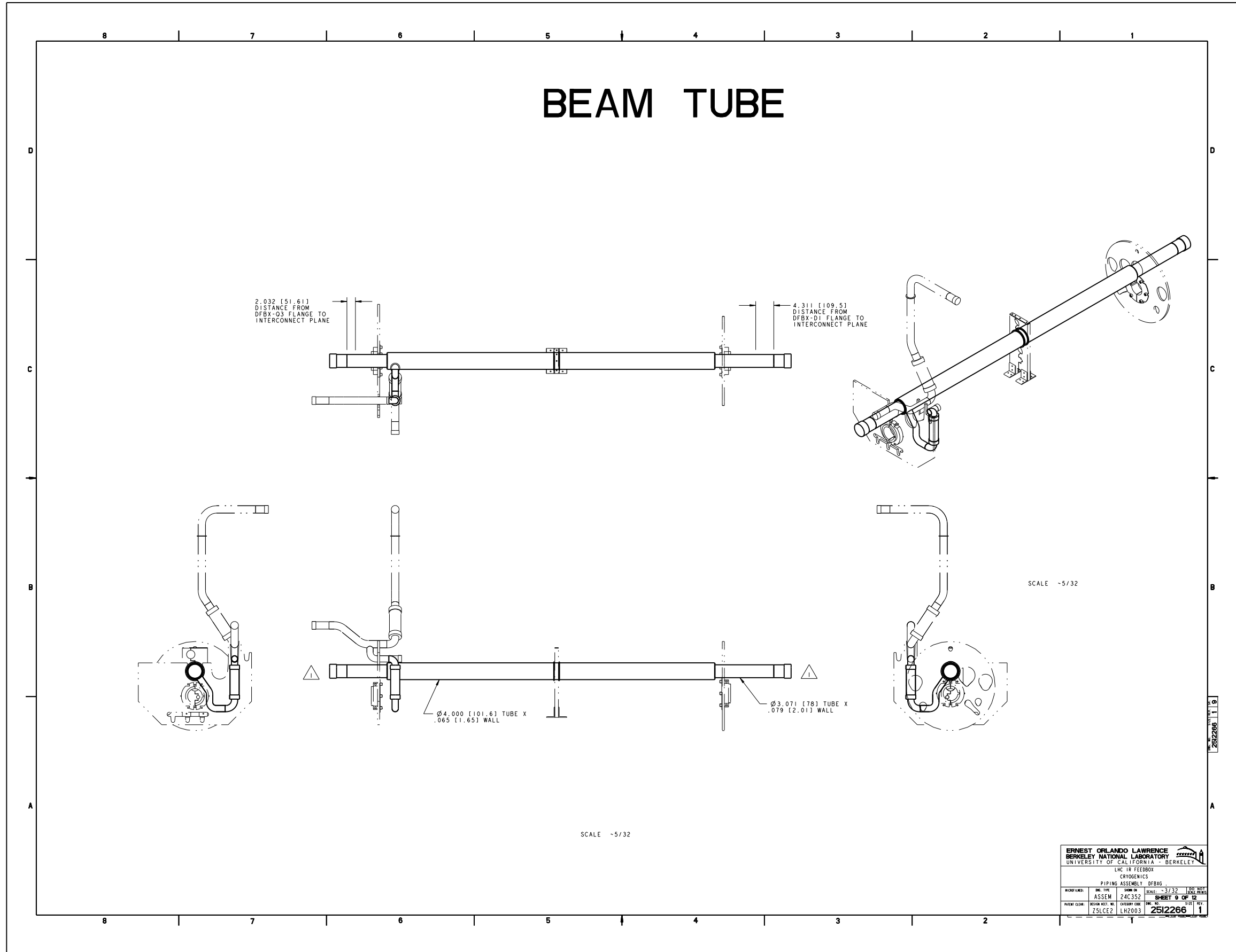
XB & CY LINES

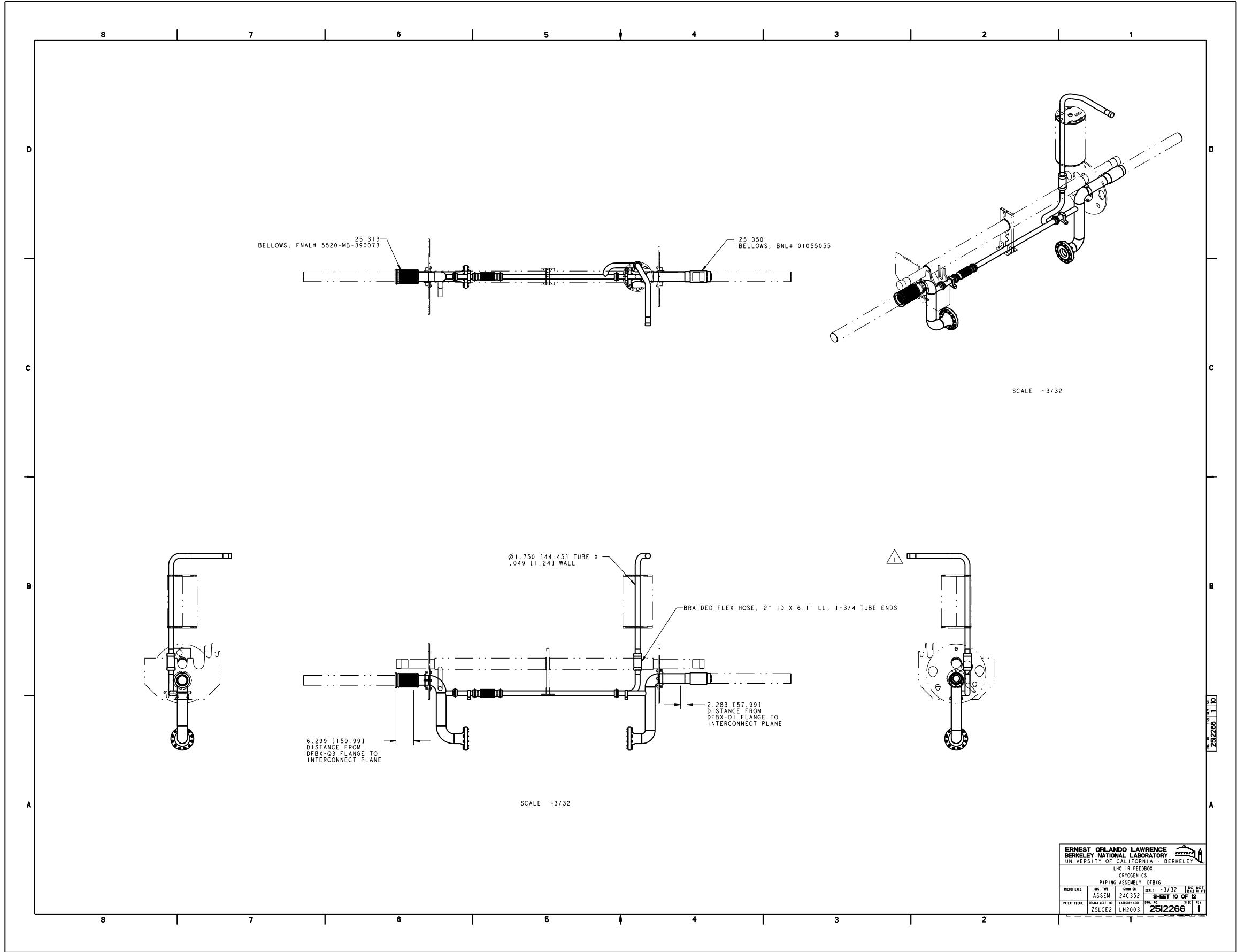


(once the second heater line is added to the surge tank, TT819B will be on it.)

ERNEST ORLANDO LAWRENCE BERKELEY NATIONAL LABORATORY UNIVERSITY OF CALIFORNIA - BERKELEY			
LHC IR FEEDBOX CRYOGENICS			
PIPING ASSEMBLY DFBXG			
DRAWN BY: ASSEM: 24C352	DATE: 02/01/02	SCALE: -5/32	SHEET NO: 8 OF 12
PROJECT: ZSLCE2	CATEGORY: LH2003	DRAWING NO: 251226	SHEET NO: 1

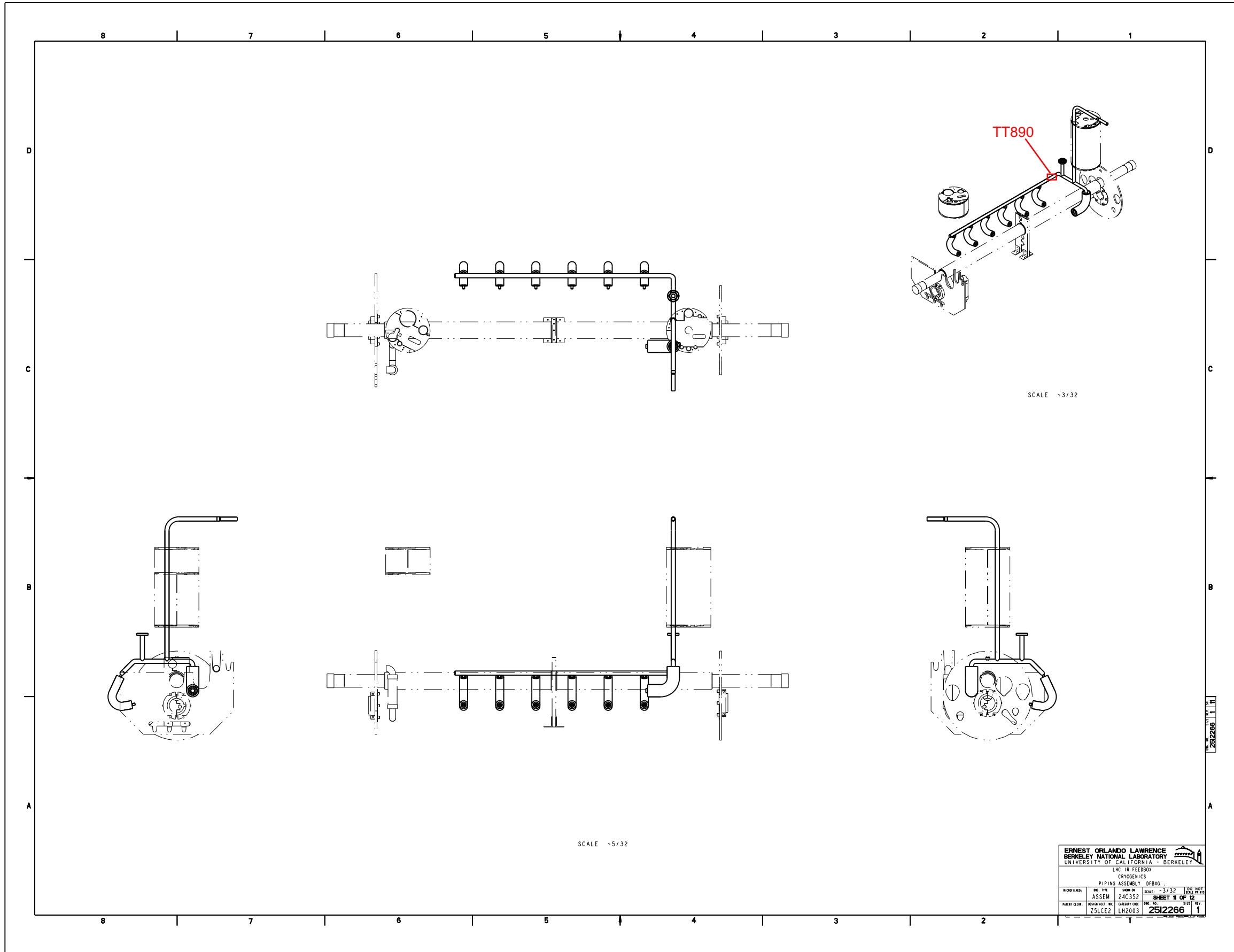
NAME: ARHARRIS OBJECT: 251226_9 DATE: 22-Jul-02 19:14:58

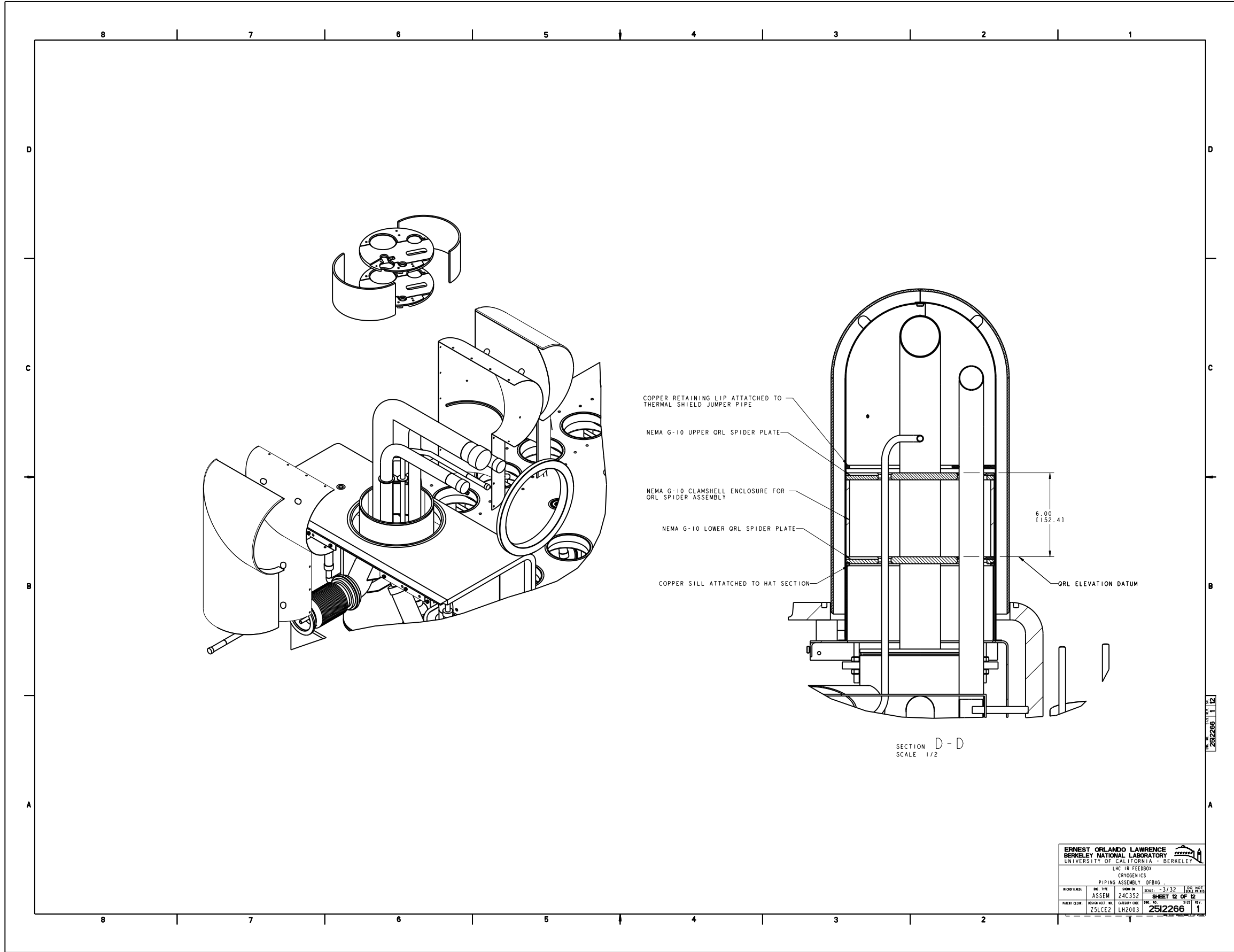




ERNEST ORLANDO LAWRENCE BERKELEY NATIONAL LABORATORY UNIVERSITY OF CALIFORNIA - BERKELEY			
LHC IR FEEDBOX			
CRYOGENICS			
PIPING ASSEMBLY DFBG			
NO. TYPE	NO. IN	SCALE: 3/32	REV. NO.
ASSEM	240352		1
SHEET 10 OF 12			
PARTS CLERK	DESIGN NO.	CATEGORY CODE	NO.
ZSLCE2	LH2003		251226
			1

251226 1110





ERNEST ORLANDO LAWRENCE BERKELEY NATIONAL LABORATORY UNIVERSITY OF CALIFORNIA - BERKELEY			
LHC AIR FEEDBOX CRYogenics			
PIPING ASSEMBLY DFBG			
NO. TYPE	NO. IN	SCALE	NO. SHEET
ASSEM	240352	-3/32	12 OF 12
PARTS CLERK	DESIGN NO.	CATEGORY CODE	NO. SHEET
ZSLCE2	LH2003	2512266	1