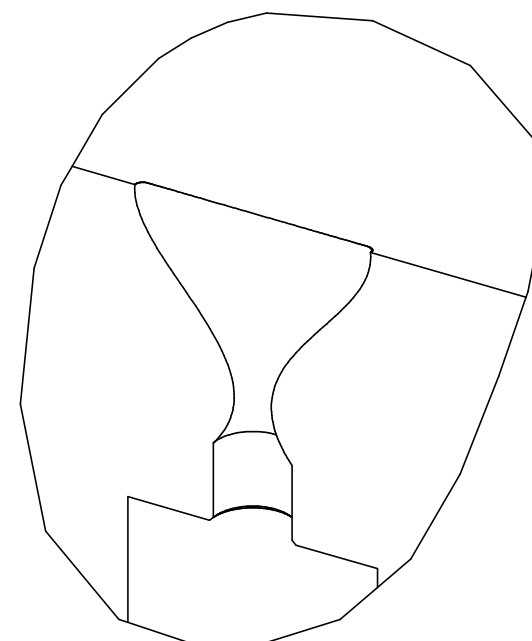
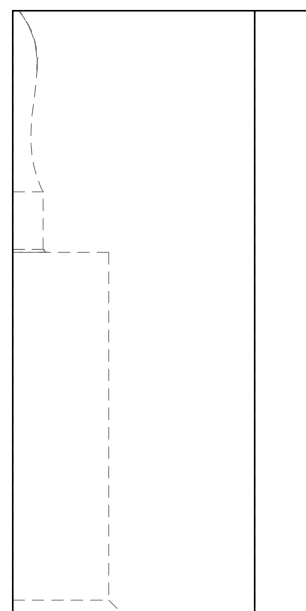
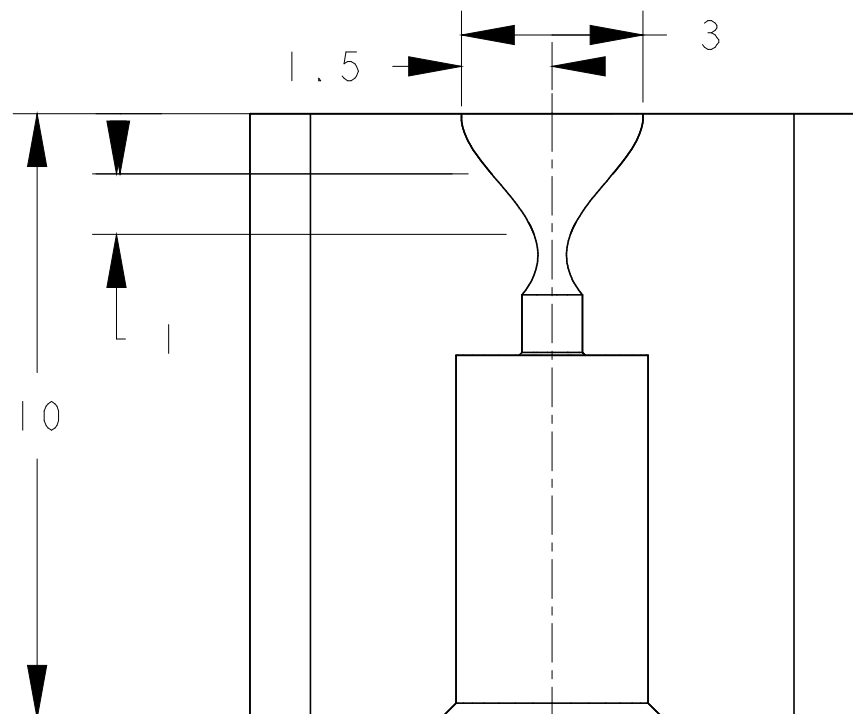
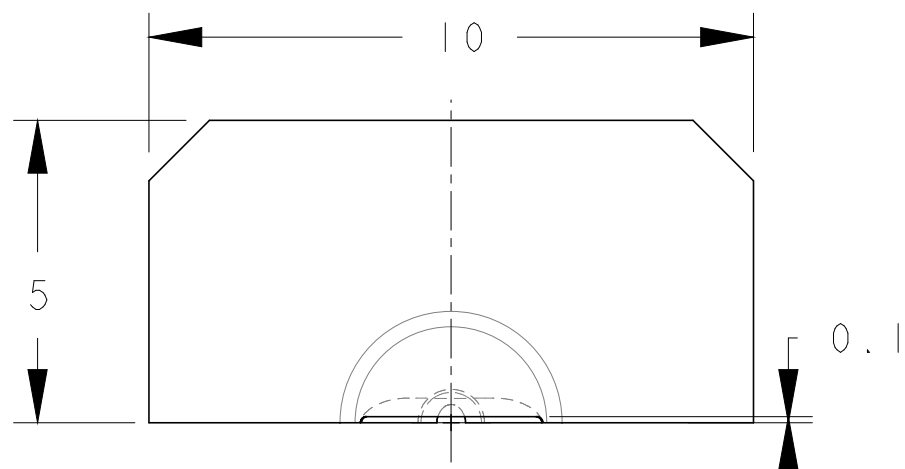


NOTES

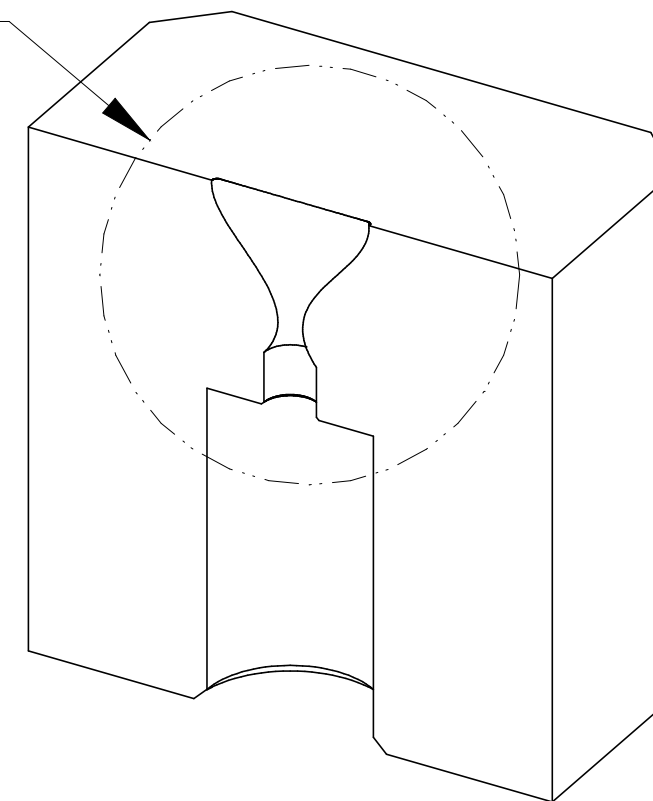
1) ALL DIMENSIONS ARE IN MILLIMETERS

REV	DWG	CHK	ZONE	DATE	CHANGES



DETAIL A
SCALE 12/1

SEE DETAIL A



UNLESS OTHERWISE SPECIFIED		SURFACE TREATMT ELECTROPOLISH	
TOLERANCES	X.X±0.5	FRAC.±1/64	IDENT METHOD TAG
	X.XX±0.05	Angles±1.00	DWG BY D. OSHATZ DATE 15-Mar-02
	X.XXX±0.010	FINISH 125	CHK BY - DATE -
DO NOT SCALE PRINT		SHOP ORDERS	
THREADS ARE CLASS 2		ACCT NO.	SERIAL NO. -
CHAMFER ENDS OF ALL SCREW TREADS 30°		DATE ISSD -	DATE RECD - NO. RECD -
CUT ROUND, 1.5 THREAD RELIEF ON MACHINED THREADS		DELIVER TO:	
BREAK EDGES .016 MAX. ON MACHINED WORK		MICR FLM:	
REMOVE BURRS, WELD SPLATTER & LOOSE SCALE		PART 8/1	
IN ACCORDANCE WITH ASME Y14.5M & B46.1		SCALE SHOWN ON	

LAWRENCE BERKELEY NATIONAL LABORATORY
UNIVERSITY OF CALIFORNIA-BERKELEY

IBT - LWFA
GAS JET TEST STAND
HALF-NOZZLE

PART		8/1		SHEET 1 OF 1	
MICR FLM:	DWG. TYPE	SCALE	DWG NO.	SIZE	REV
PAT CLR:	CATEGORY CODE	SHOWN ON	-	-	-
DESIGN ACCT NO.	-	-	-	-	-
-			- 2		