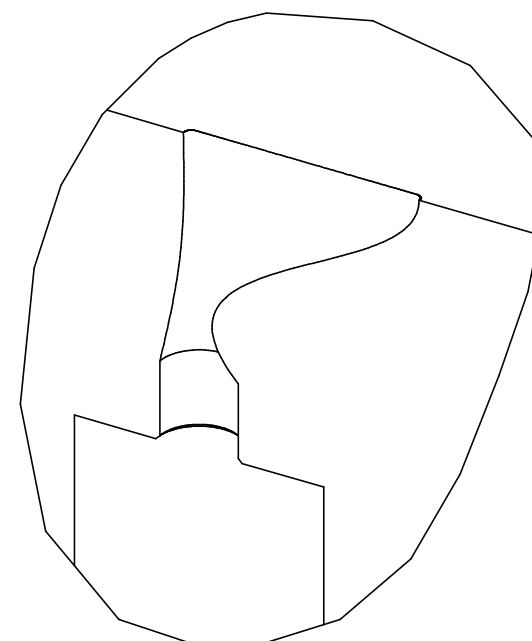
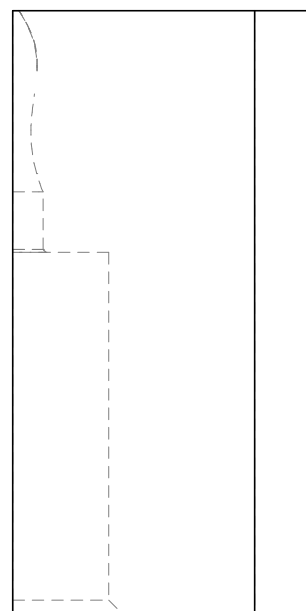
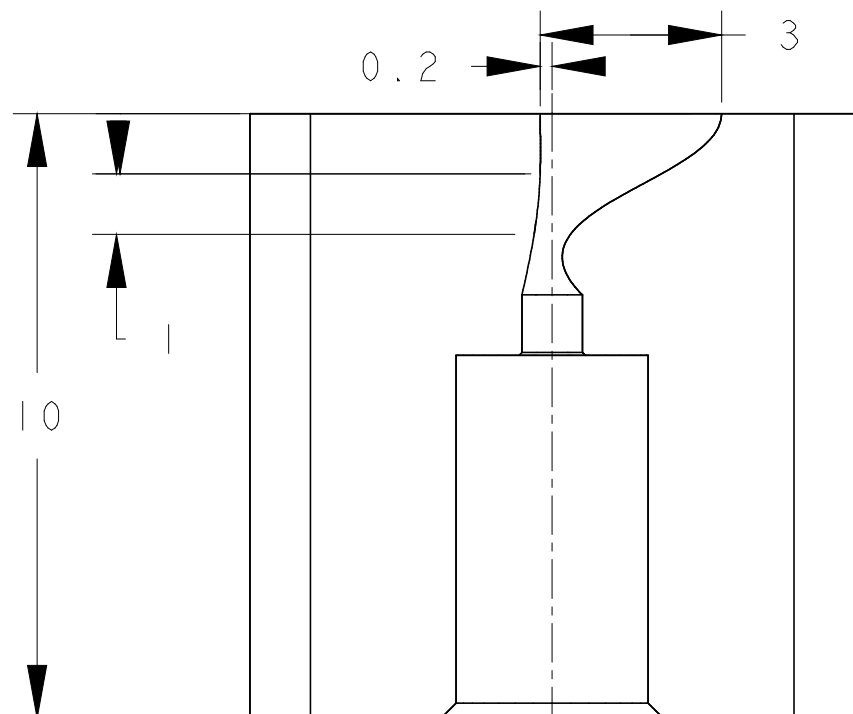
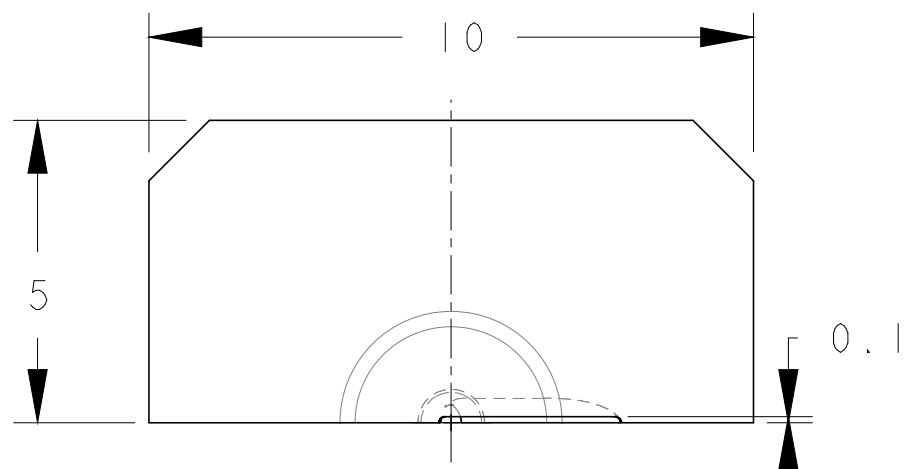


**NOTES**

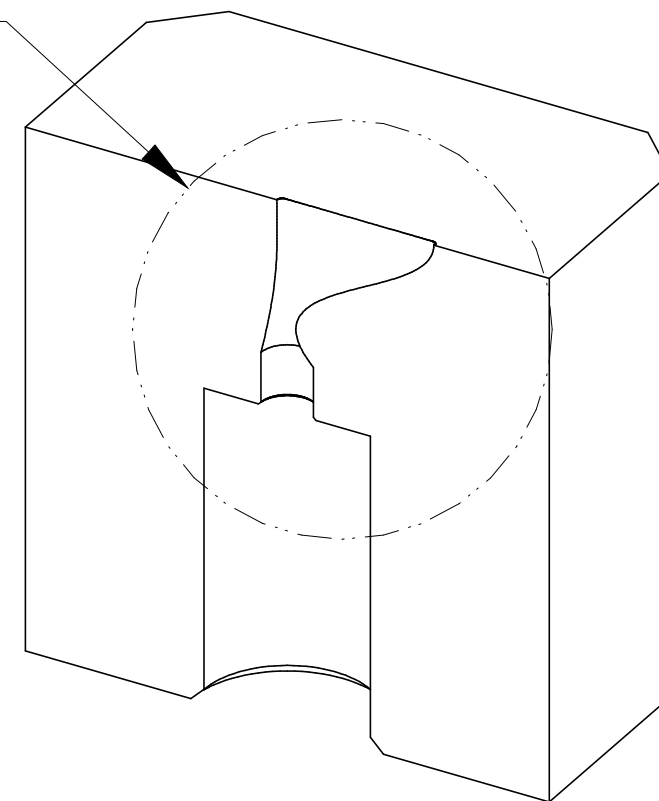
1) ALL DIMENSIONS ARE IN MILLIMETERS

REV	DWG	CHK	ZONE	DATE	CHANGES



**DETAIL A**  
SCALE 12/1

SEE DETAIL A



UNLESS OTHERWISE SPECIFIED		SURFACE TREATMT ELECTROPOLISH	
TOLERANCES	X.X±0.5	FRAC.±1/64	IDENT METHOD TAG
	X.XX±0.05	Angles±1.00	DWG BY D. OSHATZ DATE 15-Mar-02
	X.XXX±0.010	FINISH 125	CHK BY - DATE -
DO NOT SCALE PRINT THREADS ARE CLASS 2 CHAMFER ENDS OF ALL SCREW TREADS 30° CUT ROUND, 1.5 THREAD RELIEF ON MACHINED THREADS BREAK EDGES .016 MAX. ON MACHINED WORK REMOVE BURRS, WELD SPLATTER & LOOSE SCALE IN ACCORDANCE WITH ASME Y14.5M & B46.1		<b>SHOP ORDERS</b>	
ACCT NO.	SERIAL NO.	MICR FLM:	PART 8/1
DATE ISSD	DATE RECD	PAT CLR:	DWG. TYPE SCALE
DELIVER TO:	NO. RECD	DESIGN ACCT NO.	CATEGORY CODE SHOWN ON

**LAWRENCE BERKELEY NATIONAL LABORATORY**  
UNIVERSITY OF CALIFORNIA-BERKELEY

IBT - LWFA  
GAS JET TEST STAND  
HALF-NOZZLE

**SHEET 1 OF 1**

DWG NO. SIZE REV

**- 2**