



# MEBT MEETING AGENDA

August 16, 2001

---

## Mechanical Systems Update

### 1. Fabrication and Procurement Update

- Raft weldments ([photos](#), [schedule](#)), RAFT #3 COMPLETED **Ö**
- Profile Monitor Beamboxes
  - Flanges and tubing received **Ö**
  - Welding to begin 8/20/01
- Beampipes –
  - Welding to begin 8/20/01
- Other fabrications underway:
  - flanges for beampipes 8 & 9, BZ Engineering
  - flanges for remaining beampipes, BZ Engineering
  - Rebuncher Fiducialization Stand ([dwg](#)), Main Shop

### 2. Design Status ([MEBT](#))

- Beampipe welding drawings underway
- Beambox welding drawings underway
- Rebuncher Cavity mounting hardware redesign ([sketch](#))

## Electrical Systems Update

1. Low Level RF
2. Rebuncher System
3. Beam Diagnostics

## System Integration / Installation

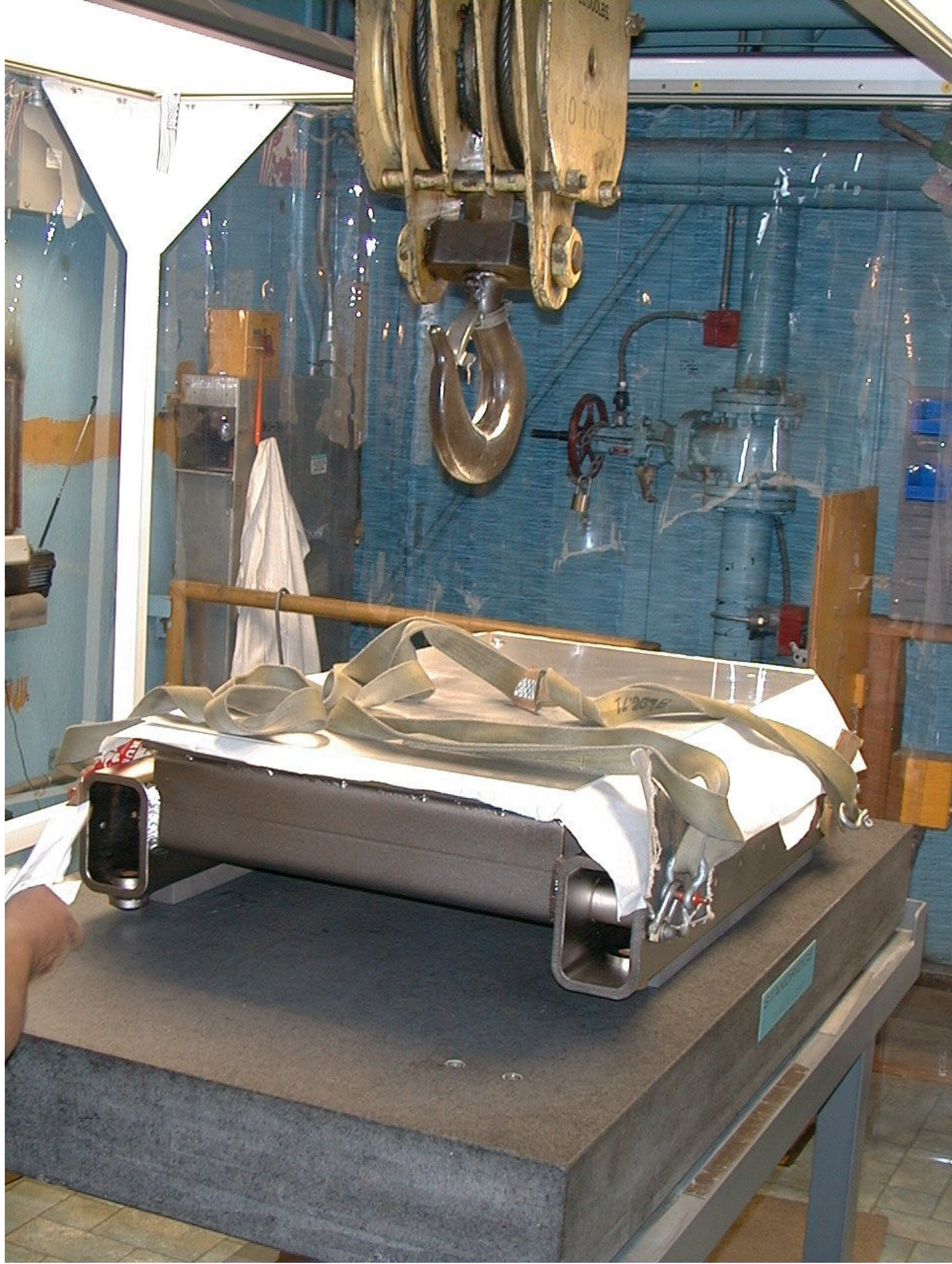
1. Assembly Progress

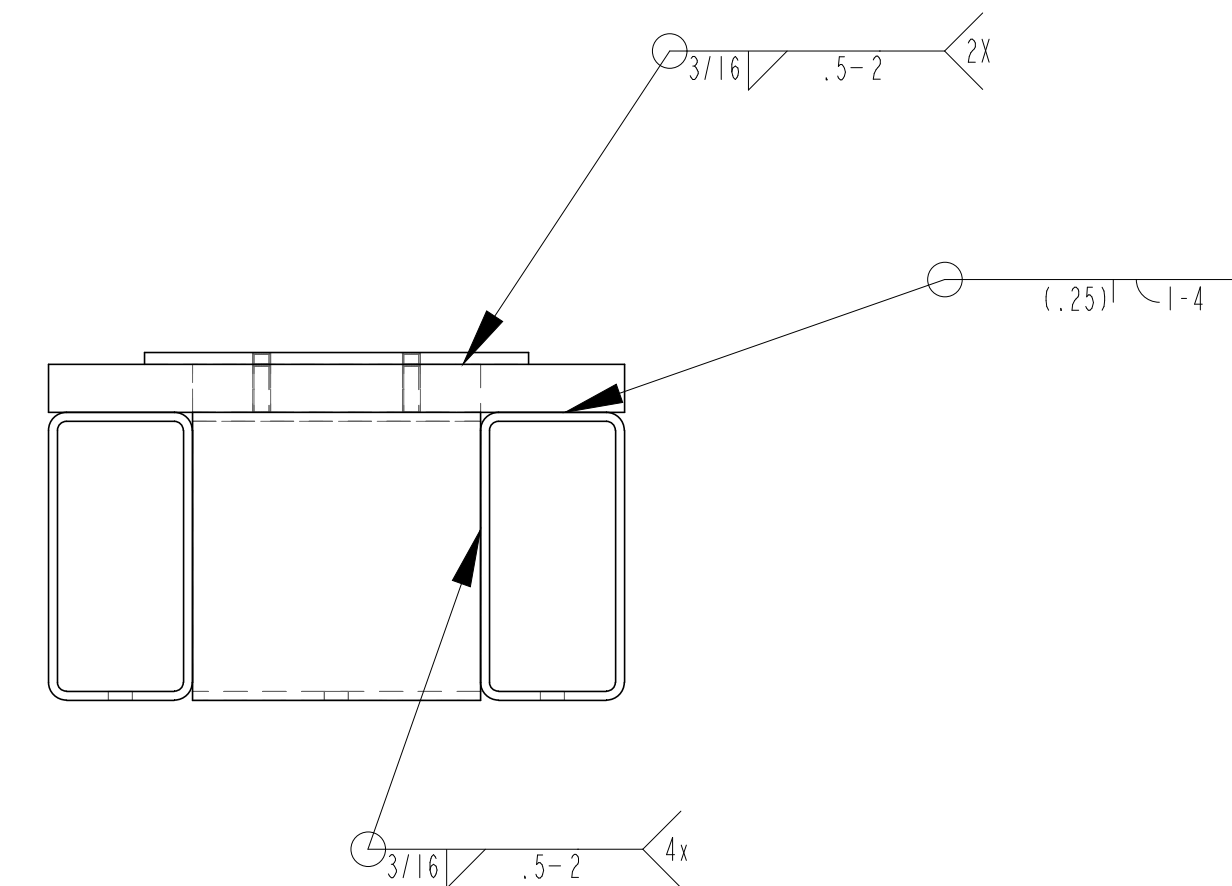
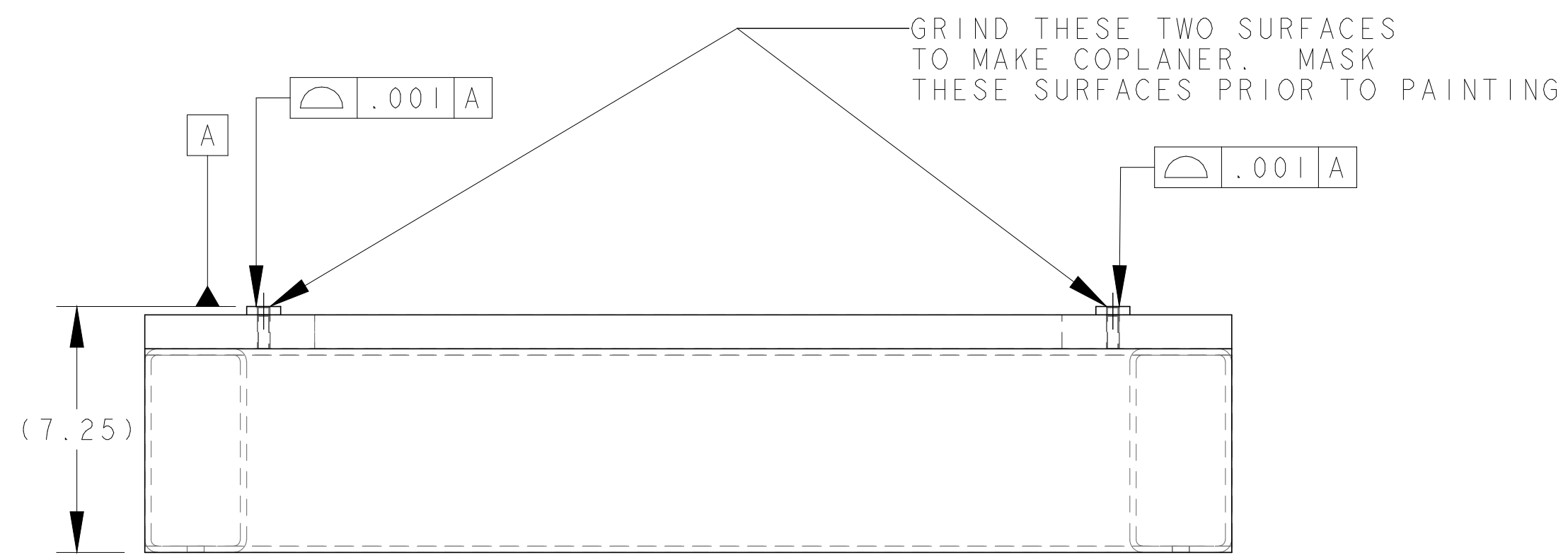
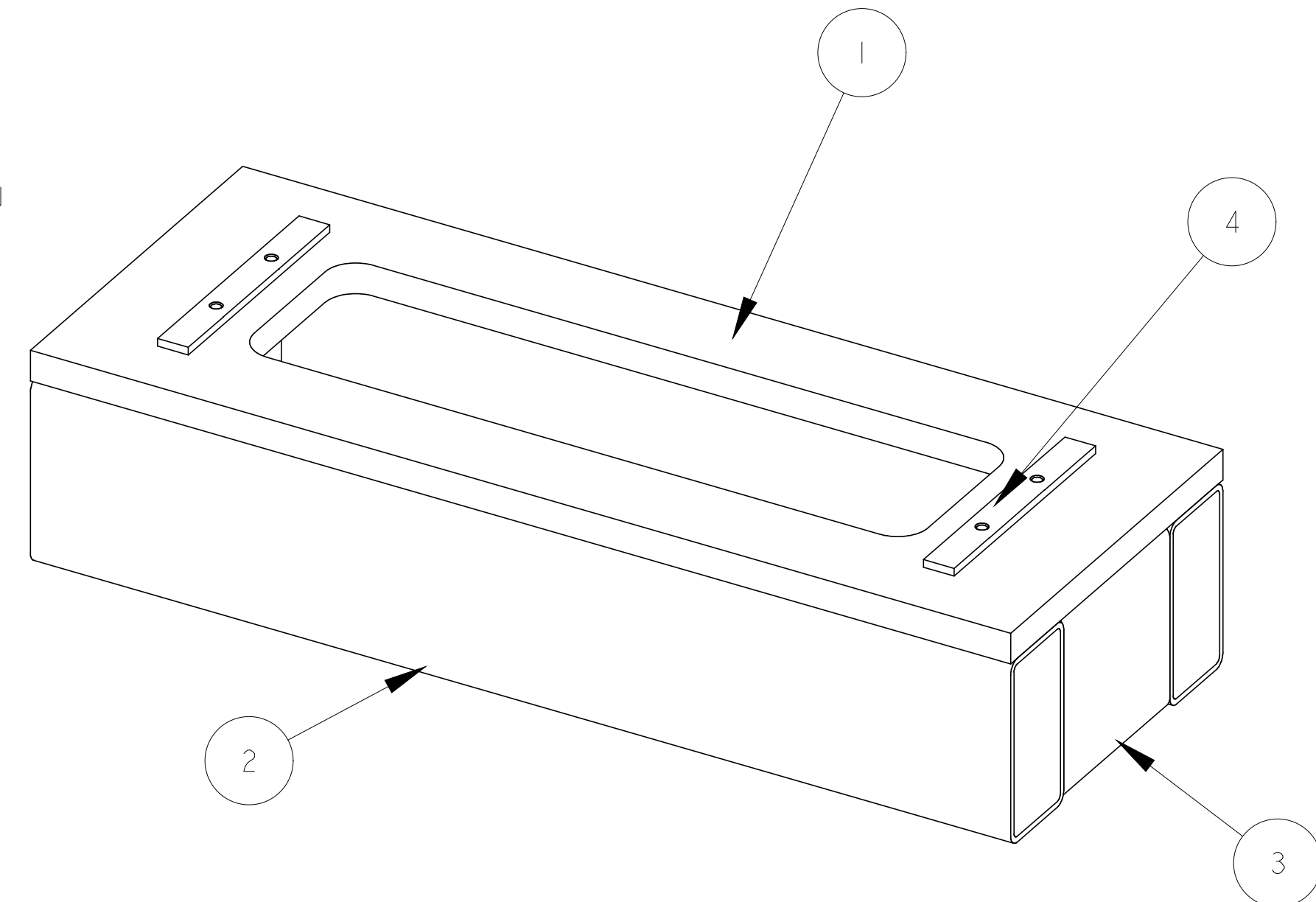
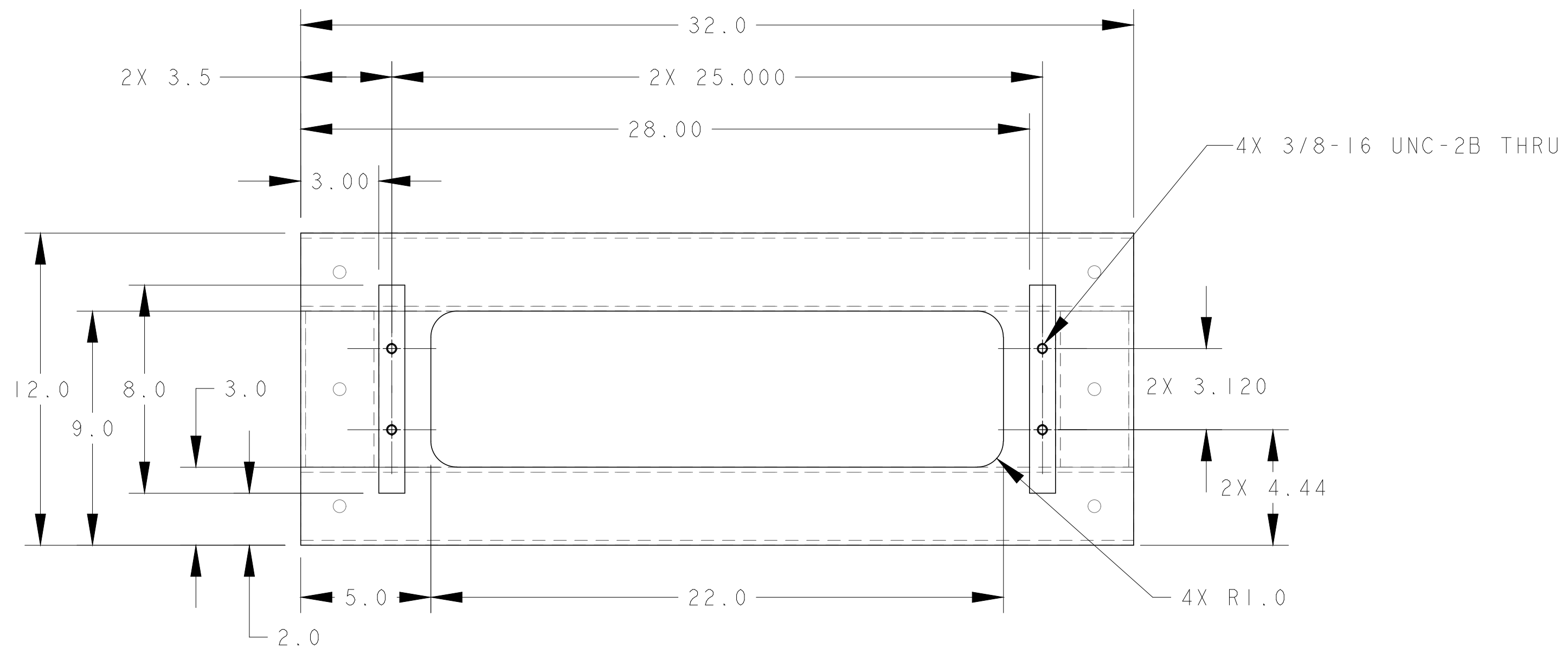
## Upcoming Tasks and Milestones

- ◆ Raft and Support Structure Complete **5/31/01 OR**
- ◆ Rebuncher Cavity #2-4 Received **6/30/01**
- ◆ Profile Monitor all complete **7/31/01**
- ◆ MEBT Raft 3 assembly complete **9/30/01**

*Next Meeting: date and time to be announced*

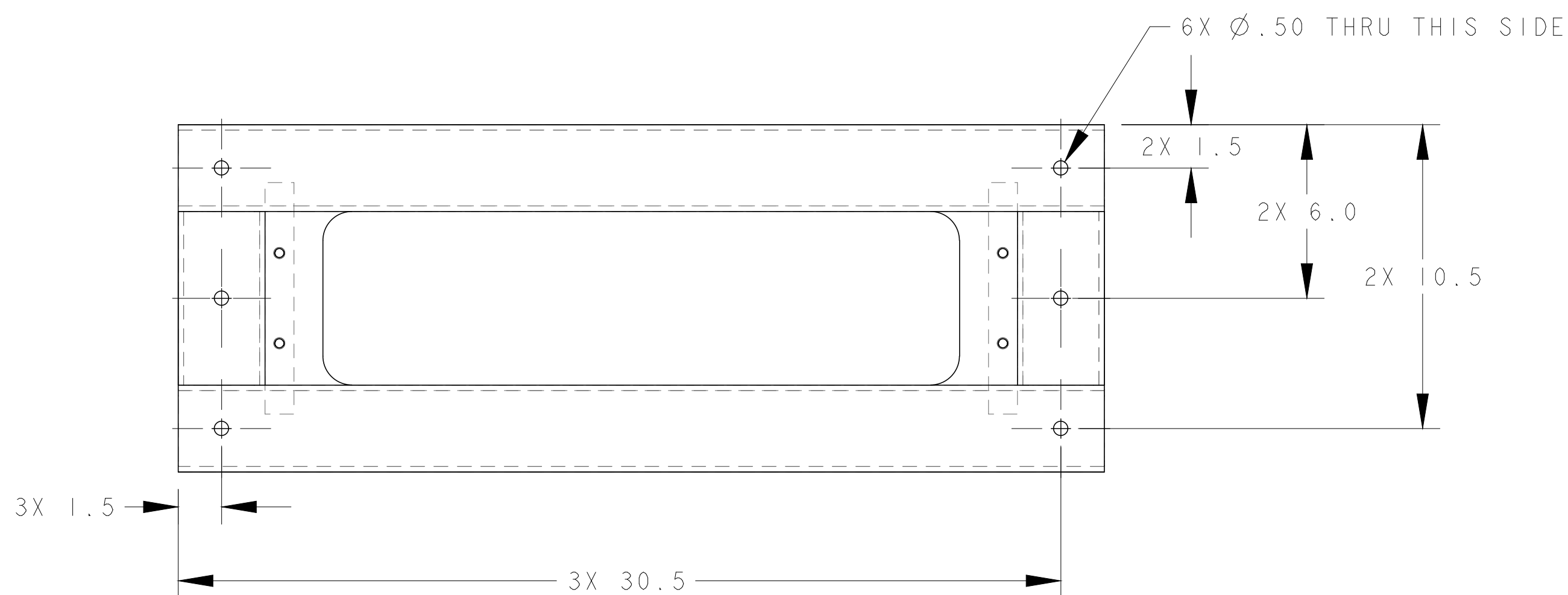






**NOTES:**

1. SAW OR FLAME CUT PERMISSIBLE FOR ALL ITEMS EXCEPT GROUND SURFACES.
2. STRESS RELIEVE WELDED ASSEMBLY PRIOR TO GINDING.
3. SAND BLAST AND CLEAN PART PRIOR TO PAINTING.
4. POWDER COAT, EXCEPT FOR GROUND SURFACES. SERIES 89, TIGER DRYLAC RAL 5015, MEDIUM TEXTURE FINISH.



ITEM	PART NO	REQD	DESCRIPTION	MATERIAL
4	25B472-4	2	FIDUCIALIZATION STAND MOUNTING BAR	1 X 1/4" BAR, 304 SS
3	25B472-3	2	FIDUCIALIZATION STAND TUBING - SHORT	6 X 3 X 3/16" WALL TUBING, CARBON STEEL
2	25B472-2	2	FIDUCIALIZATION STAND TUBING - LONG	6 X 3 X 3/16" WALL TUBING, CARBON STEEL
1	25B472-1	1	FIDUCIALIZATION STAND TOP PLATE	1 INCH PLATE, A36

UNLESS OTHERWISE SPECIFIED		SHOP ORDERS		SER. NO. -	
PROJECTION:		ACCT. NO. -	NO. -	DATE -	DO NOT SCALE PRINTS
TOLERANCES: X.X ± 0.1, X.XX ± 0.03, X.XXX ± 0.005		SURFACE TREATMENT: SANDBLAST		ERNEST ORLANDO LAWRENCE BERKELEY NATIONAL LABORATORY UNIVERSITY OF CALIFORNIA - BERKELEY	
ANGLES ± 1.0°		IDENT. METHOD: TAG		SNS - FES MBT BEAM TRANSPORT SYSTEMS REBUNCHER FIDUCIALIZATION STAND	
FINISH: 125/		PROJECT NUMBER: N/A		SCALE: 1/4	
DO NOT SCALE PRINT		PROJECT NAME: N/A		SHEET 1 OF 1	
THREADS ARE CLASS 2		DWG. BY: D. OSHATZ		DATE: 03-Aug-01	
CHAMFER ENDS OF ALL SCREW TRENDS 30°		CHK. BY: -		DATE: -	
CUT ROUND, 1.5 THREAD RELIEF ON MACHINED THREADS		APR. BY: D. OSHATZ		DATE: -	
BREAK EDGES .016 MAX. ON MACHINED WORK		PATENT CLEAR: -		DESIGN ACCT. NO. FE3312	
REMOVE BURRS, WELD SPLATTER & LOOSE SCALE		CATEGORY CODE: -		DWG. NO. 25B4724	
IN ACCORDANCE WITH ASME Y14.5M & B46.1		DATE: -		REV. A	

REV	DWG	CHK	ZONE	DATE	INITIAL RELEASE	CHANGES
A	DPO			8/6/01		

## MEBT Raft #3 Schedule June/July/August

Monday	Tuesday	Wednesday	Thursday	Friday
<b>June 25</b> All parts for rafts 1, 2 and 3 are cut and preliminary machine work finished on raft #3.	<b>June 26</b> Start Raft #3 assembly and tack weld the parts together	<b>June 27</b> Raft #3 is tack welded together.	<b>June 28</b> Pre-weld inspection. Completely weld Raft #3.	<b>June 29</b> Raft #3 sent off site for stress relieving.
<b>July 2</b> Raft #3 sent off site for stress relieving. <b>Charlie Bremmer</b> out, therefore may be no inspection of raft 2 and 1 parts before tack welding.	<b>July 3</b> Raft #3 sent off site for stress relieving. <b>Charlie Bremmer</b> out, therefore may be no inspection of raft 2 and 1 parts before tack welding.	<b>July 4</b> <b>Holiday</b>	<b>July 5</b> Light Sandblast of Raft #3 to remove stress relief oven scale. Charlie Bremmer inspection of raft 2 and 1 parts before tack welding. <b>Waiting for quote from grinder!</b>	<b>July 6</b> Machine edges of Raft #3 mounting plates.
<b>July 9</b> Raft #3 sent off site for grinding? <b>NO!</b>	<b>July 10</b> Raft #3 sent off site for grinding? <b>NO!</b> Start welding raft #2. <b>YES!</b>	<b>July 11</b> Raft #3 sent off site for grinding. <b>NO!</b>	<b>July 12</b> Raft #3 sent off site for grinding. <b>NO!</b> Start welding raft #1? Yes	<b>July 13</b> Raft #3 sent off site for grinding. <b>NO!</b>
<b>July 16</b> Raft #3 sent off site for grinding. <b>NO!</b>	<b>July 17</b> Raft #3 sent off site for grinding. <b>NO!</b>	<b>July 18</b> Raft #3 sent off site (overnight shipping) for grinding.	<b>July 19</b> Raft #3 sent off site for grinding.	<b>July 20</b> Raft #3 sent off site for grinding.
<b>July 23</b> Raft #3 sent off site for grinding.	<b>July 24</b> Raft #3 arrives back from grinding.	<b>July 25</b> Inspection of the grinding of Raft #3. Clean first?	<b>July 26</b> Begin machining of the top plates of raft #3	<b>July 27</b> Continue machining of the top plates of raft #3.
<b>July 30</b> Machine work done. Inspection of the drilled and tapped holes of Raft #3.	<b>July 31</b> Inspection of the drilled and tapped holes of Raft #3.	<b>August 1</b> Re-Machine dowel pin holes.	<b>August 2</b> Inspection of the dowel pin holes of Raft #3.	<b>August 3</b> Sand Blast and clean out tapped holes.
<b>August 6</b> Send Raft #3 to platers for electroless nickel plating.	<b>August 7</b> Raft #3 at platers.	<b>August 8</b> Raft #3 at platers.	<b>August 9</b> Raft #3 returns from platers. Final inspection.	<b>August 10</b> Deliver to SNS building 71
<b>August 13</b>	<b>August 14</b>	<b>August 15</b>	<b>August 16</b>	<b>August 17</b>

# SNS - FES MEBT Raft Fabrication Schedule

	May							June														July														August																																		
	May 17	May 18	May 21	May 22	May 23	May 24	May 25	May 28	May 29	May 30	May 31	June 1	June 4	June 6	June 7	June 8	June 11	June 12	June 13	June 14	June 15	June 18	June 19	June 20	June 21	June 22	June 25	June 26	June 27	June 28	June 29	July 2	July 3	July 4	July 5	July 6	July 9	July 10	July 11	July 12	July 13	July 16	July 17	July 18	July 19	July 20	July 23	July 24	July 25	July 26	July 27	July 30	July 31	August 1	August 2	August 3	August 6	August 7	August 8	August 9	August 10	August 13	August 14	August 15	August 16	August 17	August 20	August 21	August 22	August 23
<b>RAFT #3</b>																																																																						
Rev B WJO released to the approver																																																																						
Problem finding 2" x 5" tubing. Revise the drawings to change tube size.																																																																						
Rev C WJO released to the approver																																																																						
Procure Material																																																																						
Cut and preliminary machine work of all parts for rafts 1, 2 and 3.																																																																						
Inspect parts, start Raft #3 assembly and tack weld the parts together.																																																																						
Raft #3 is tack welded together.																																																																						
Pre-weld inspection. Completely weld Raft #3.																																																																						
Raft #3 sent off site for stress relieving.																																																																						
Light Sandblast of Raft #3 to remove stress relief oven scale. Machine edges of Raft #3 mounting plates.																																																																						
Raft #3 sent off site for grinding.																																																																						
Inspection of the grinding of Raft #3. Clean first?																																																																						
Begin machining of the top plates of raft #3.																																																																						
Steam clean raft #3?																																																																						
Inspection of the drilled and tapped holes of Raft #3.																																																																						
Send Raft #3 to platers for electroless nickel plating.																																																																						
Raft #3 returns from platers. Final Inspection.																																																																						
Deliver to SNS building 71																																																																						
<b>RAFT #2</b>																																																																						
Rev B WJO released to the approver																																																																						
Problem finding 2" x 5" tubing. Revise the drawings to change tube size.																																																																						
Rev C WJO released to the approver																																																																						
Procure Material																																																																						
Cut and preliminary machine work of all parts for rafts 1, 2 and 3.																																																																						
Inspect parts (pre-weld)																																																																						
Start Raft #2 assembly and tack weld the parts together.																																																																						
Pre-weld inspection. Completely weld Raft #2. Start building raft #1.																																																																						
Machine edges of Raft #2 mounting plates.																																																																						
Raft #2 wait for Raft #1 to be sent off site for stress relieving.																																																																						
Light Sandblast of Raft #2 to remove stress relief oven scale.																																																																						
Raft #2 sent off site for grinding.																																																																						
Inspection of the grinding of Raft #2. Clean first?																																																																						
Begin machining of the top plates of raft #2.																																																																						
Steam clean raft #2?																																																																						
Inspection of the drilled and tapped holes of Raft #2.																																																																						
Send Raft #2 to platers for electroless nickel plating.																																																																						
Raft #2 returns from platers. Final Inspection.																																																																						
Deliver to SNS building 71																																																																						
<b>RAFT #1</b>																																																																						
Rev B WJO released to the approver																																																																						
Problem finding 2" x 5" tubing. Revise the drawings to change tube size.																																																																						
Rev C WJO released to the approver																																																																						
Procure Material																																																																						
Cut and preliminary machine work of all parts for rafts 1, 2 and 3.																																																																						
Inspect parts (pre-weld)																																																																						
Start Raft #1 assembly and tack weld the parts together.																																																																						
Pre-weld inspection. Completely weld Raft #1.																																																																						
Machine edges of Raft #1 mounting plates.																																																																						
Raft #1 and #2 sent off site for stress relieving.																																																																						
Light Sandblast of Raft #1 to remove stress relief oven scale.																																																																						
Raft #1 sent off site for grinding.																																																																						
Inspection of the grinding of Raft #1. Clean first?																																																																						
Begin machining of the top plates of raft #1.																																																																						
Steam clean raft #1?																																																																						
Inspection of the drilled and tapped holes of Raft #1.																																																																						
Send Raft #1 to platers for electroless nickel plating.																																																																						
Raft #1 returns from platers. Final Inspection.																																																																						
Deliver to SNS building 71																																																																						

