



# MEBT MEETING AGENDA

April 26, 2001

---

## Mechanical Systems Update

1. **Fabrication and Procurement Updates**
  - Chopper Target #1 complete (photos, micrographs) ✓
  - Chopper Target Beambox Received ✓
  - Chopper Vacuum Enclosures Received ✓
  - BPM's
  - Frame in 77 Shop
  - Profile Monitor Beamboxes in 77 Shop
2. **Rafts (MEBT)**
  - Fabrication Drawings
  - Assembly area under development
3. **Profile Monitor Beambox Design (dwg)**

## Electrical Systems Update

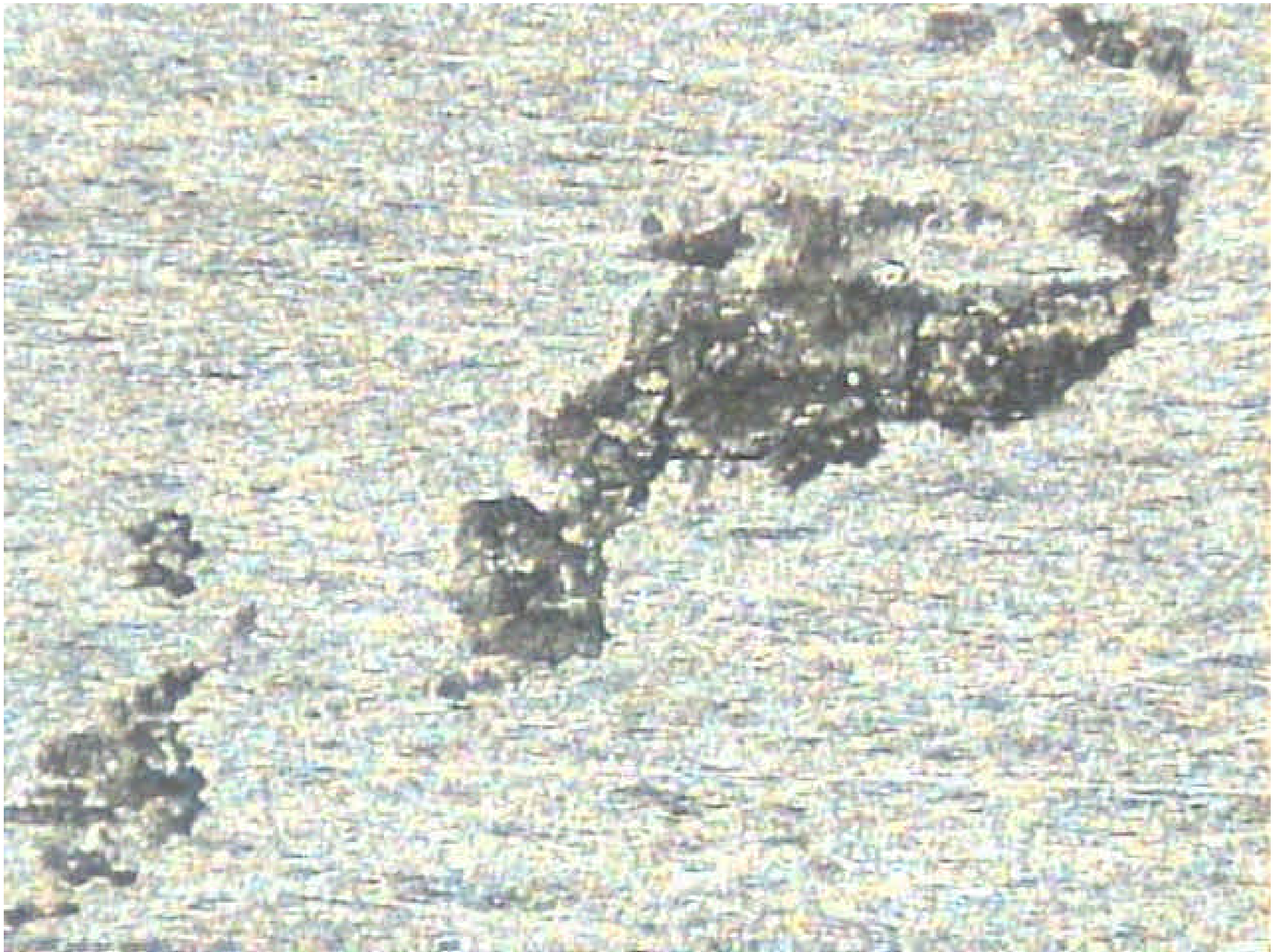
1. **Low Level RF**
2. **Rebuncher System**
3. **Beam Diagnostics**

## System Integration / Installation

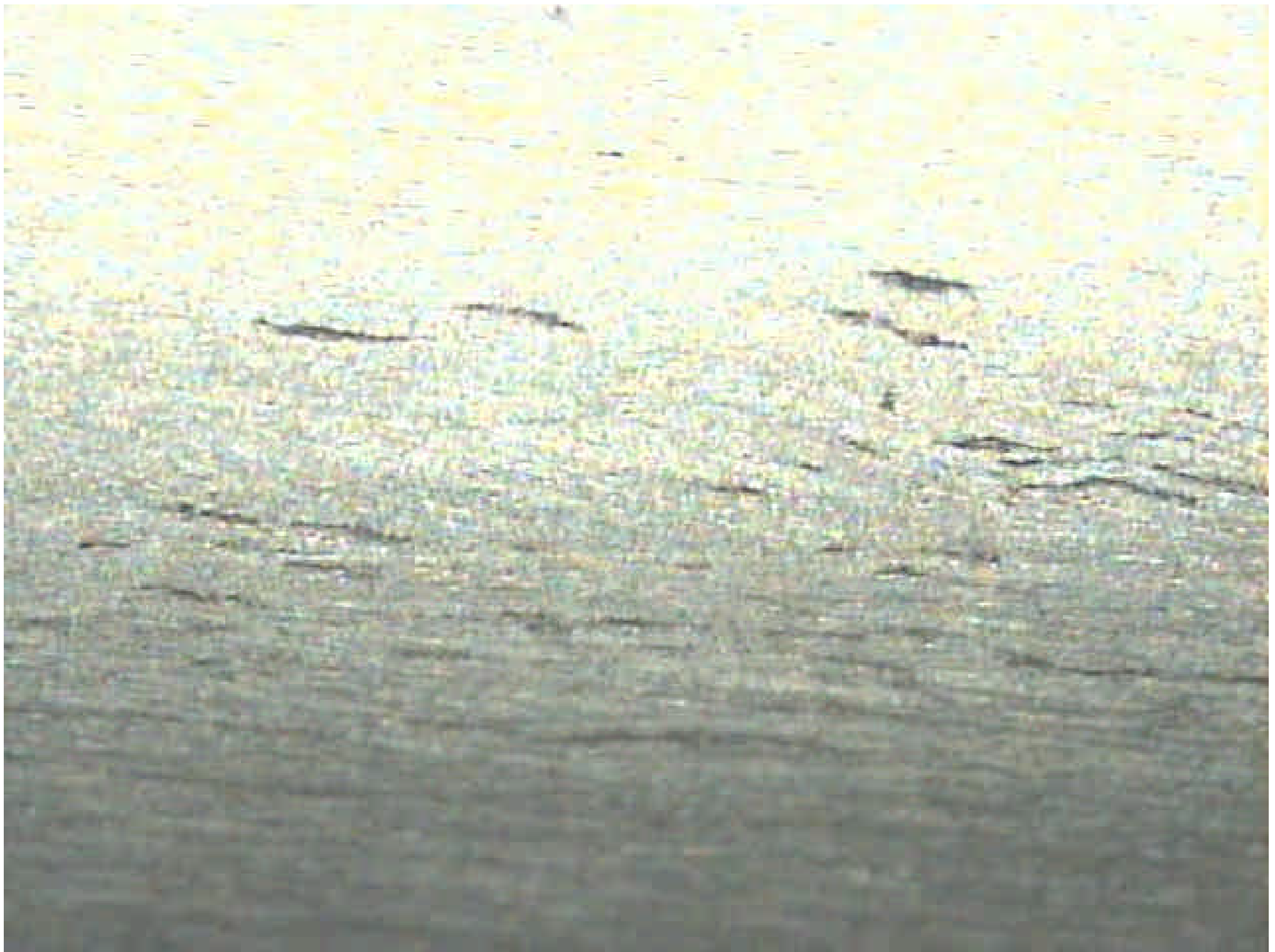
## Upcoming Tasks and Milestones

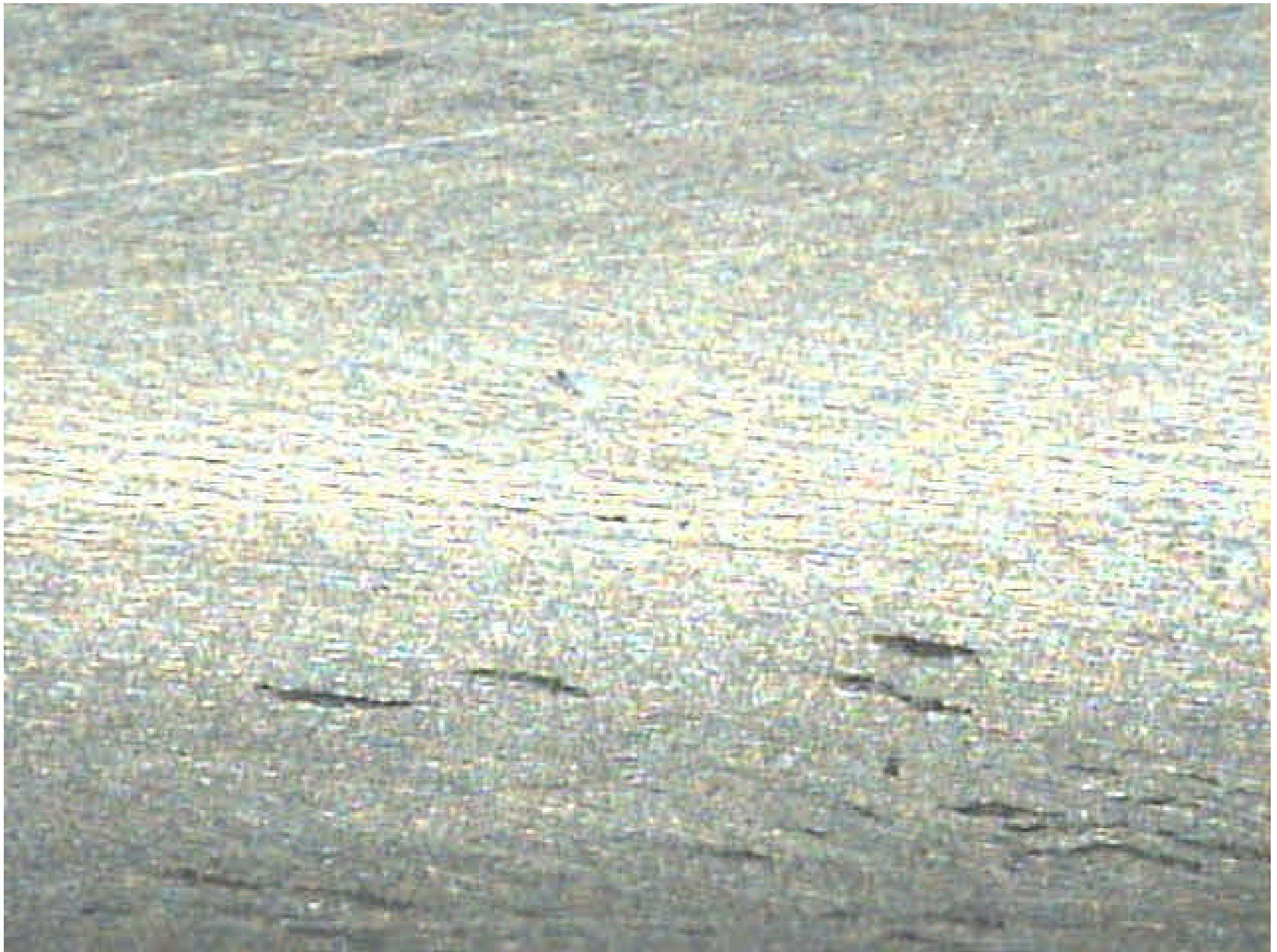
- |   |   |            |
|---|---|------------|
| ◆ | Rebuncher Cavity #1 Received            | 1/31/01 OR |
| ◆ | Profile Monitor First Article Complete  | 3/31/01    |
| ◆ | Power Supply Rack Installation Complete | 3/31/01    |
| ◆ | Chopper Target Complete                 | 4/30/01 ✓  |
| ◆ | Chopper Vacuum Enclosures Complete      | 5/31/01    |
| ◆ | Raft and Support Structure Complete     | 5/31/01 OR |
| ◆ | Rebuncher Amplifiers #2-6 Received      | 6/30/01    |
| ◆ | Rebuncher Cavity #2-4 Received          | 6/30/01    |
| ◆ | Profile Monitor all complete            | 7/31/01    |

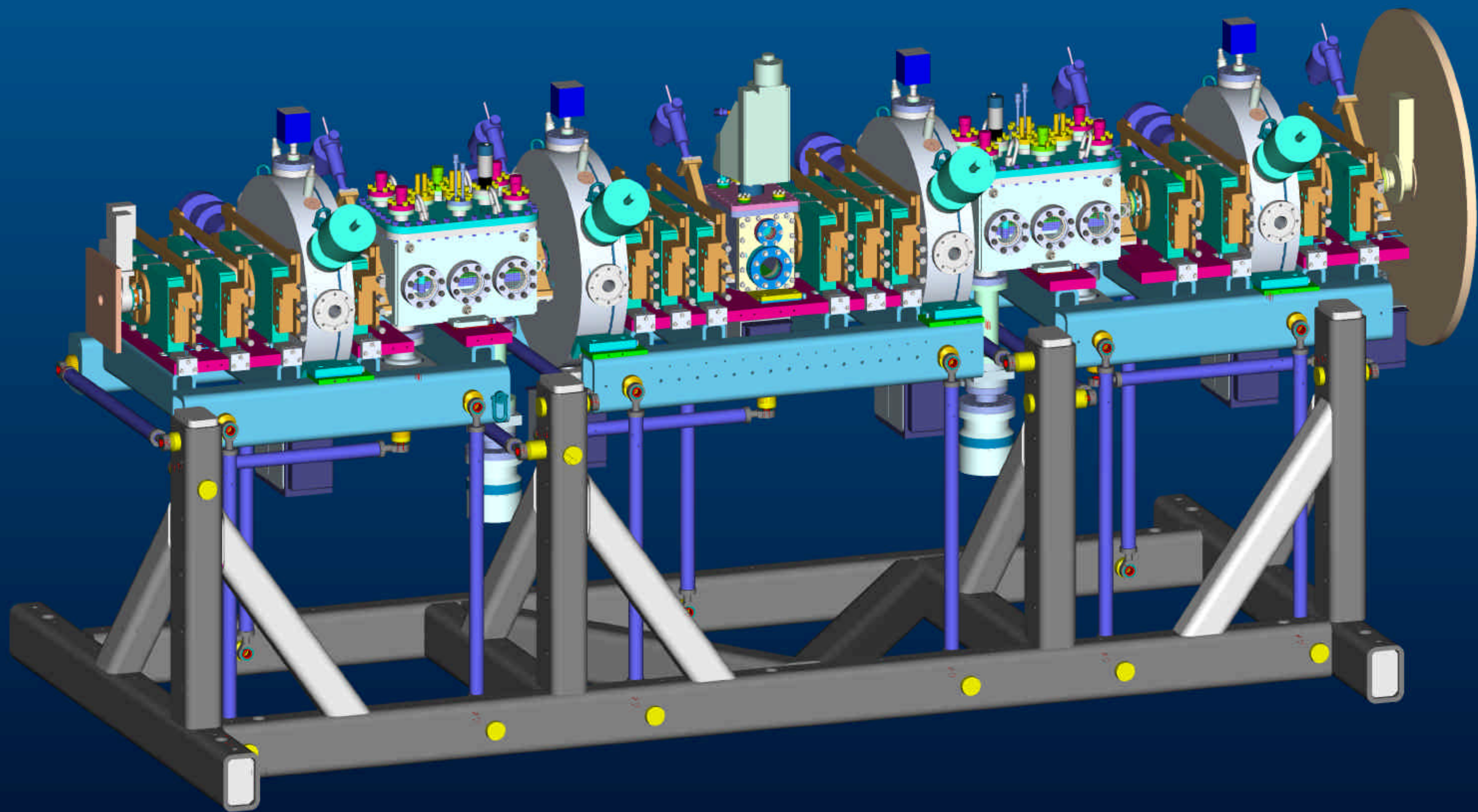
*Next Meeting, \*Special Day\* Friday, 5/11/01, 10 AM*





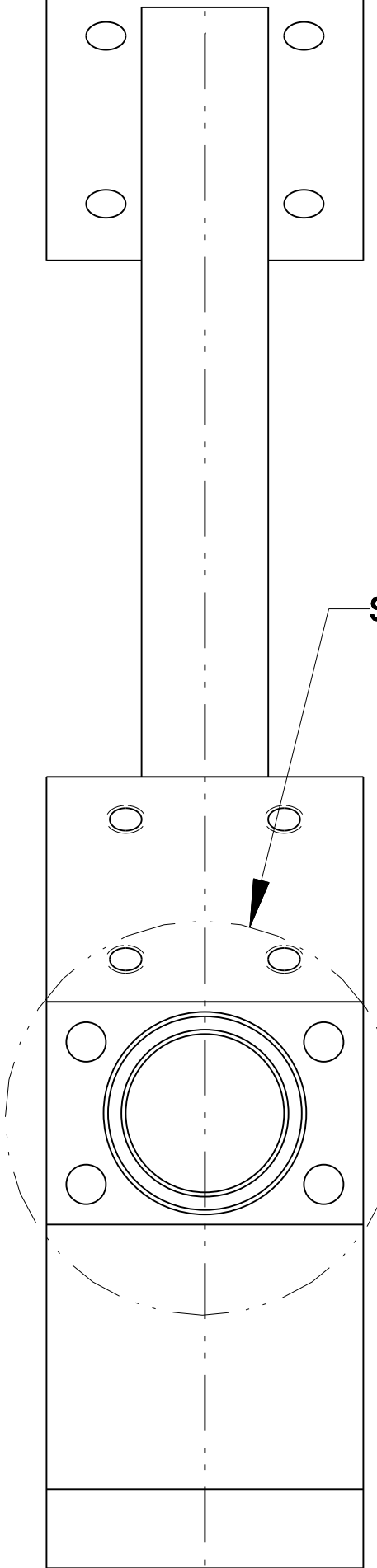




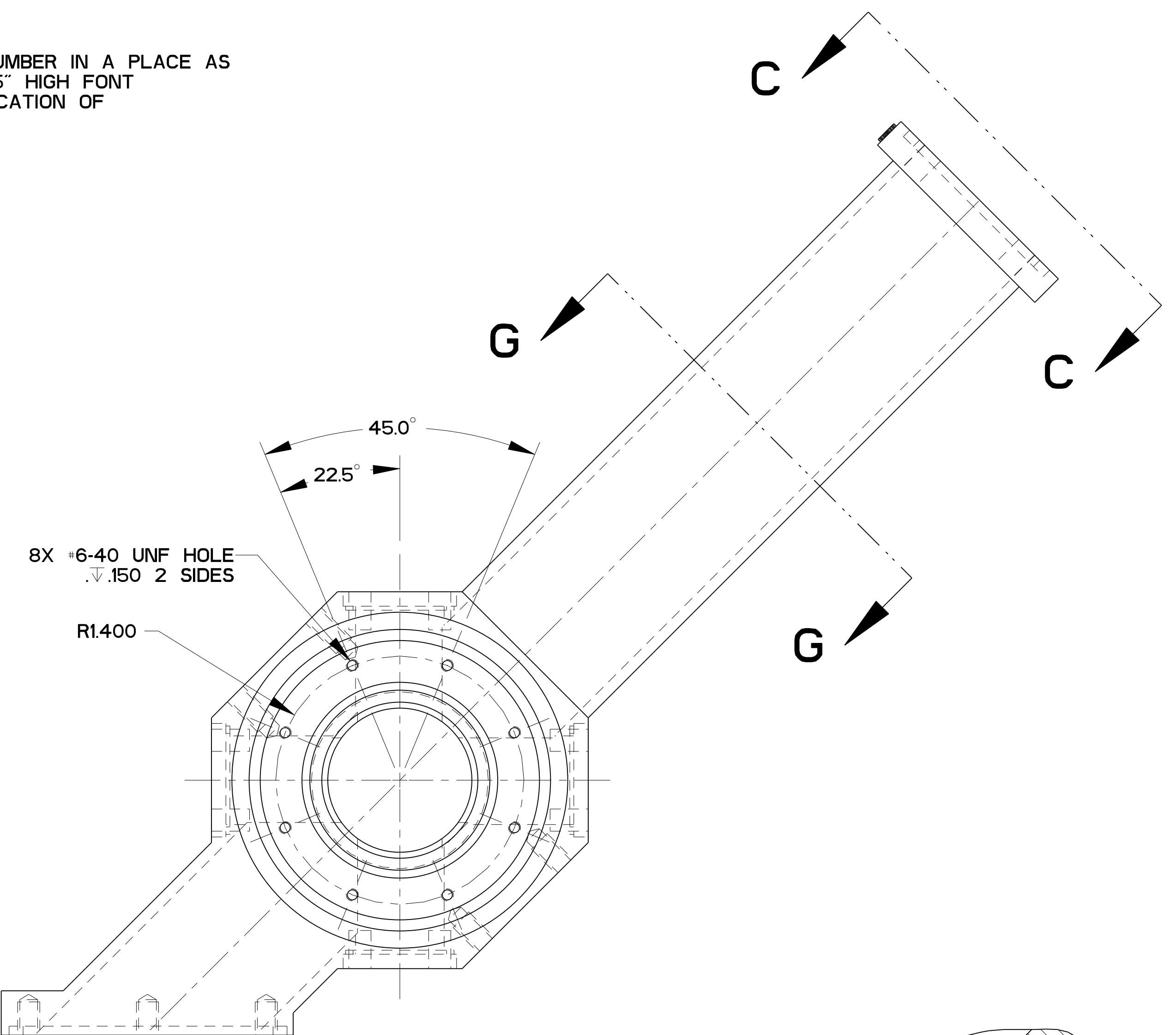


25B437-XX

STAMP PART NUMBER IN A PLACE AS SHOWN WITH .25" HIGH FONT IN CENTRAL LOCATION OF FLANGE SIDE!

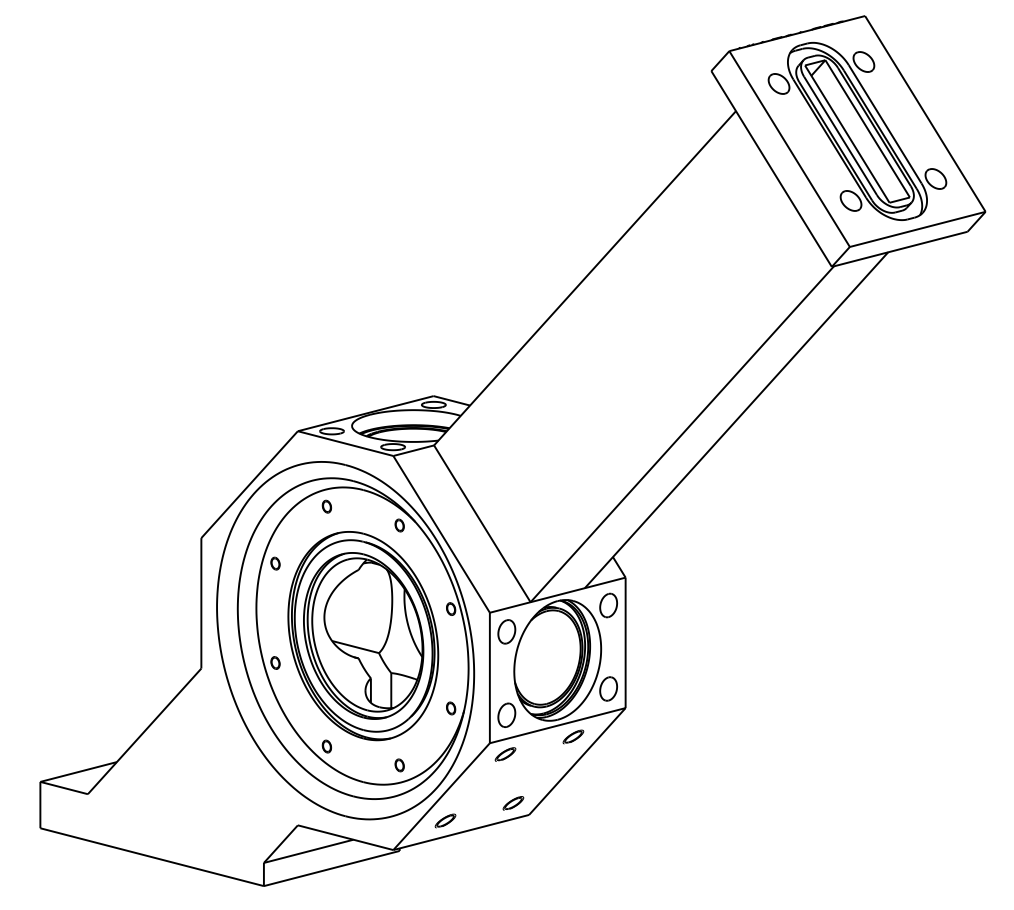


SEE DETAIL D

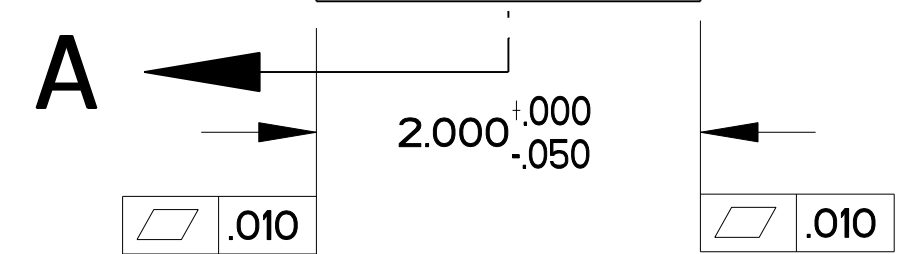


8X #6-40 UNF HOLE  
↓.150 2 SIDES

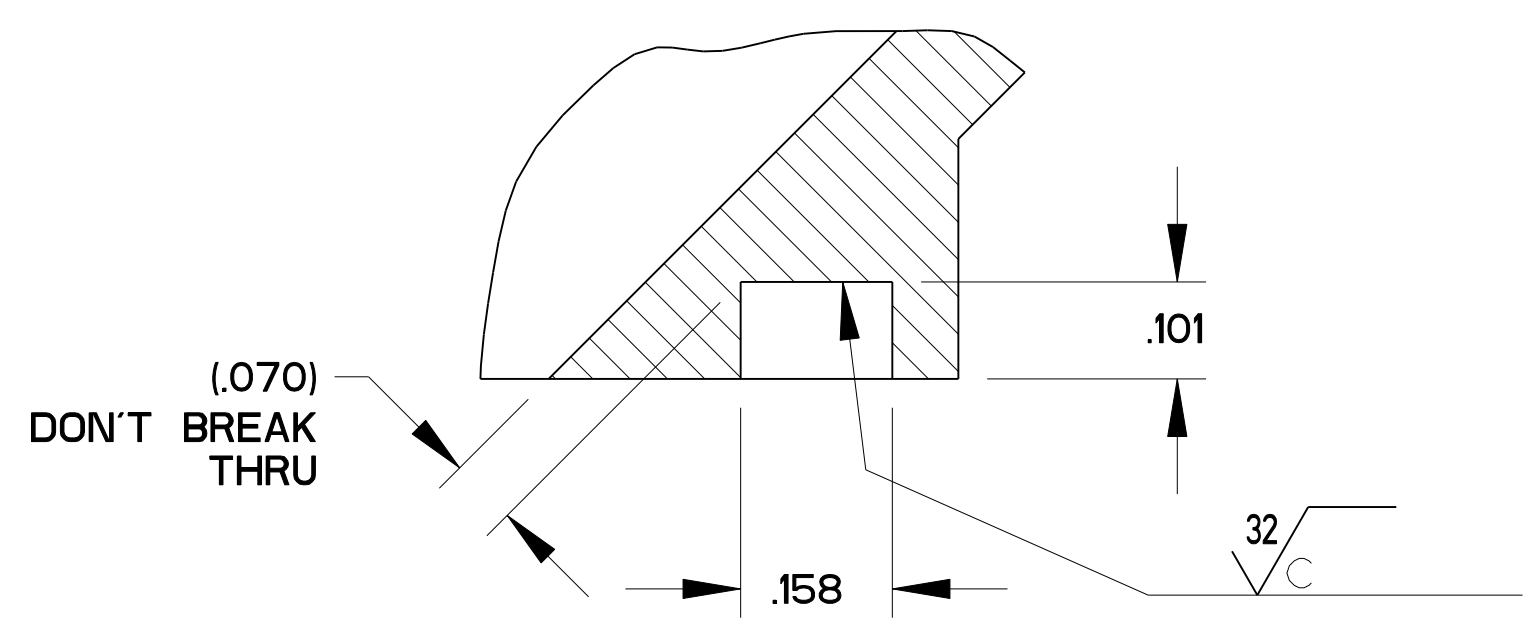
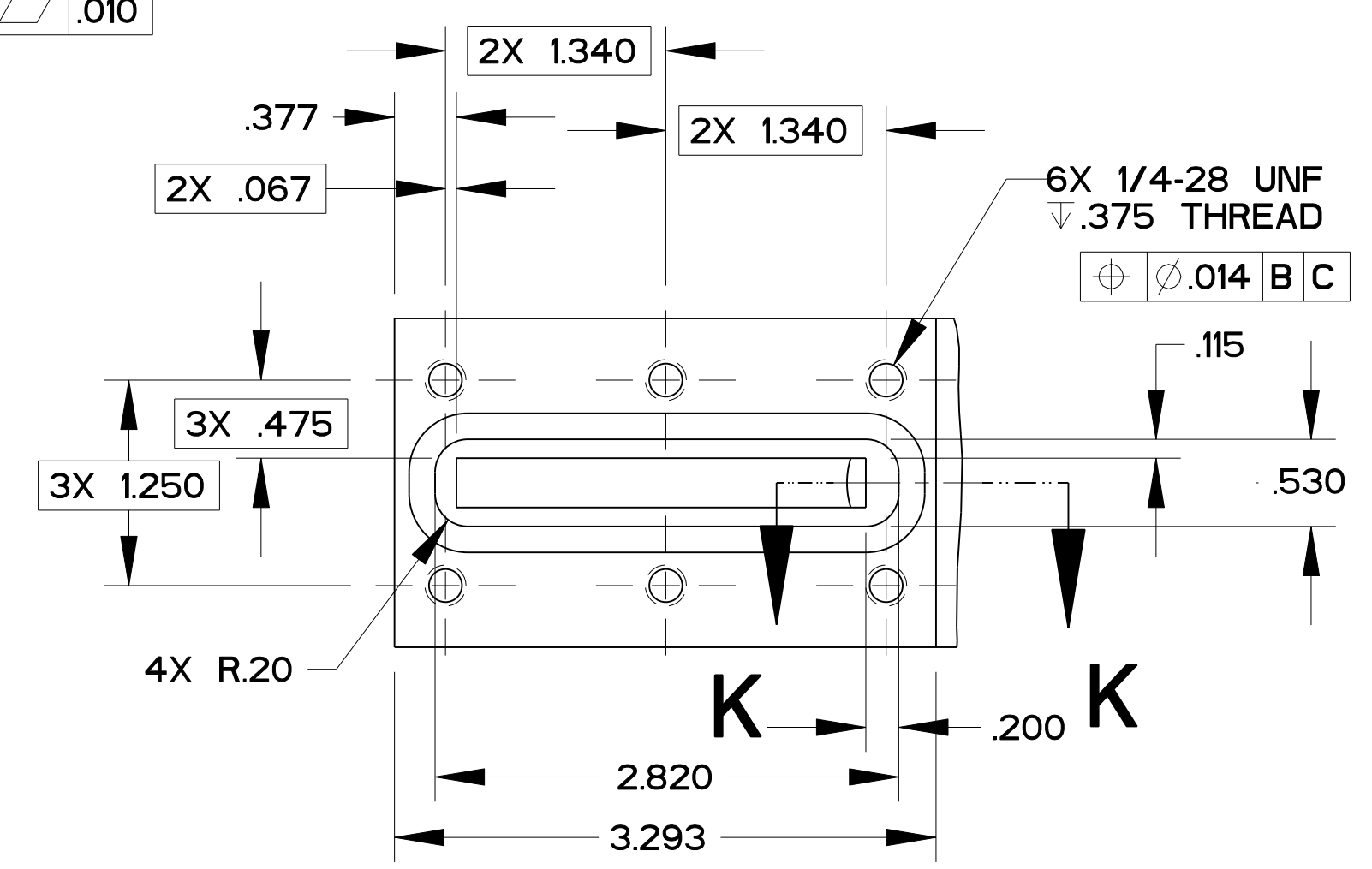
R1.400



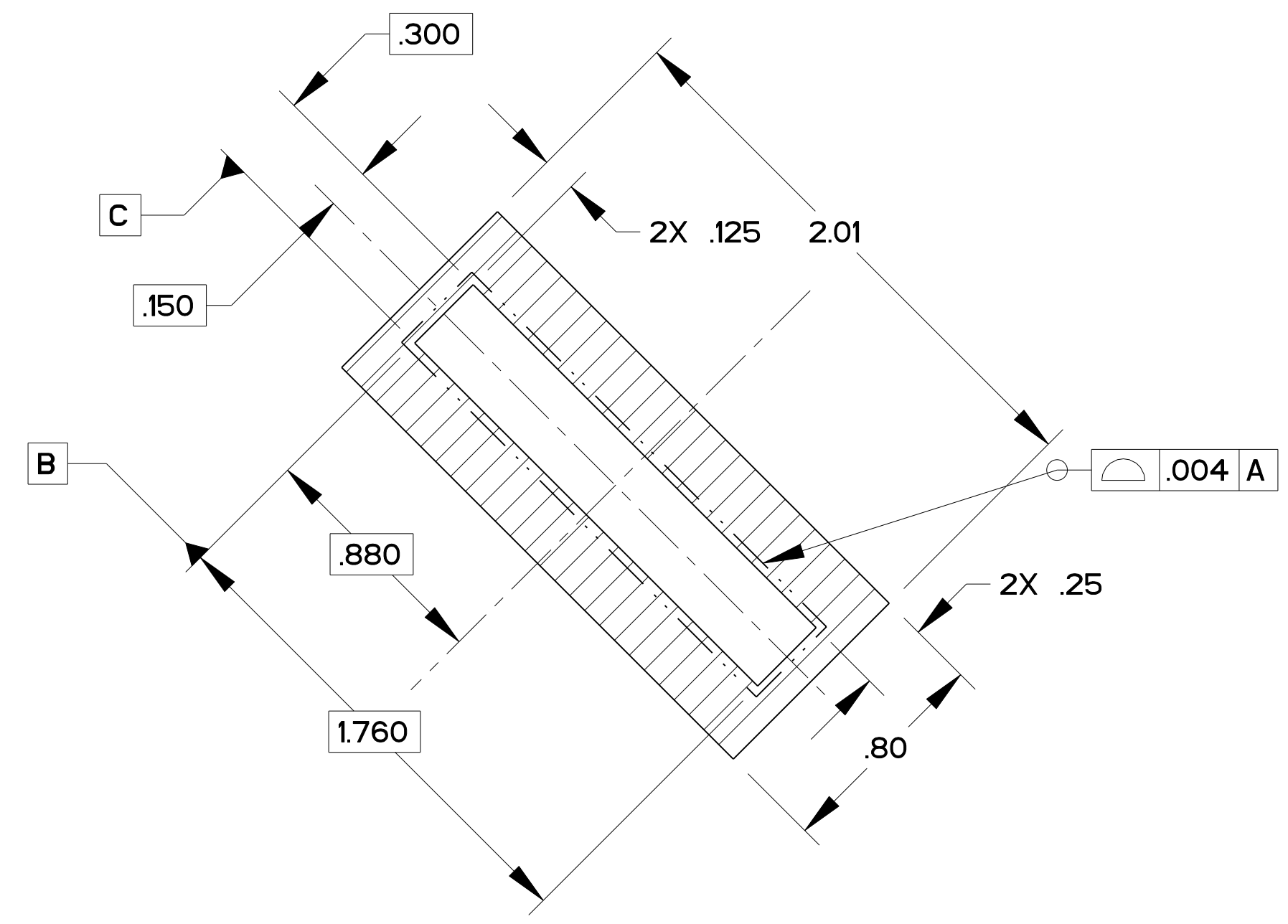
SCALE 1/2



SCALE 1/1



SECTION K-K  
SCALE 5/1



SECTION G-G  
SCALE 2/1

NOTES:

1. ULTRA-HIGH VACUUM CLEANING AND PACKING REQUIRED.

REV	DWG	CHK	ZONE	DATE	INITIAL RELEASE	CHANGES
A				4/18/01	INITIAL RELEASE	

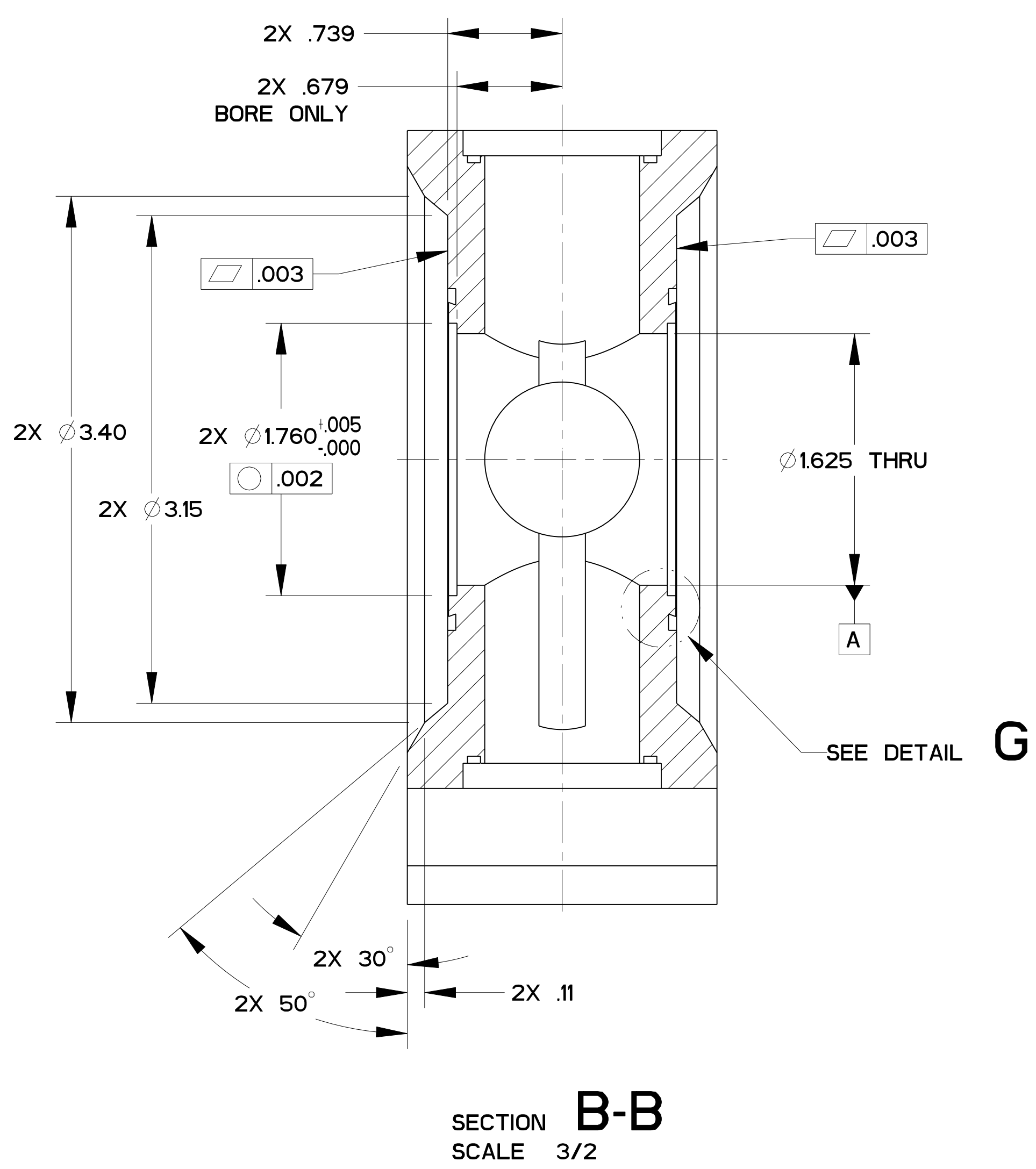
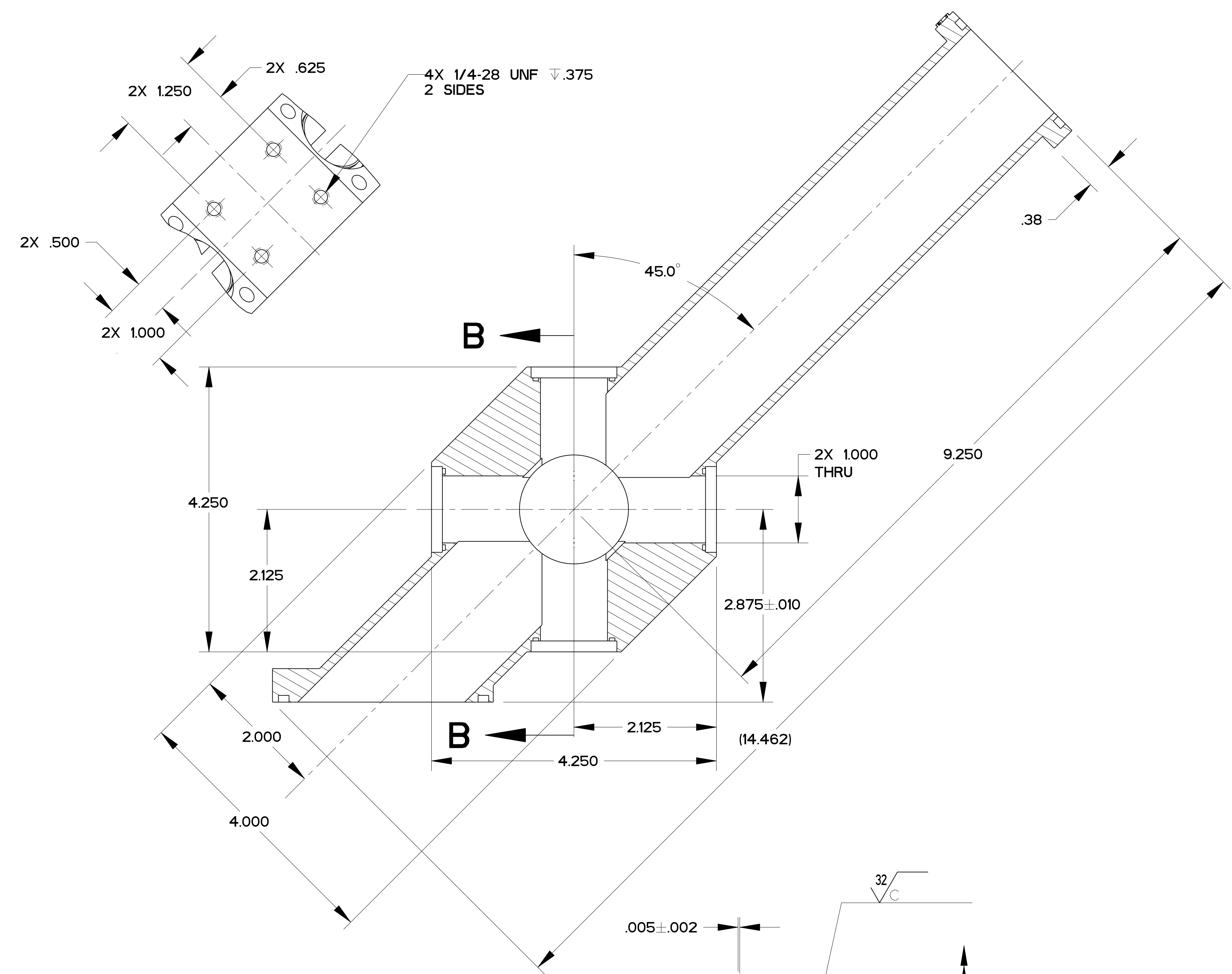
UNLESS OTHERWISE SPECIFIED  
 PROJECTION:   
 TOLERANCES:  
 XX ± 0.1    FRAC ± 1/64  
 XXX ± 0.01    Angles ± 10°  
 XXXX ± 0.005    FINISH 125  
 DO NOT SCALE PRINT  
 THREADS ARE CLASS 2  
 CHAMFER ENDS OF ALL SCREW THREADS 30°  
 CUT ROUND, 15 THREAD RELIEF ON MACHINED THREADS  
 BREAK EDGES .016 MAX. ON MACHINED WORK  
 REMOVE BURRS, WELD SPLATTER & LOOSE SCALE  
 IN ACCORDANCE WITH ASME Y14.5M & B46.1

2" PLATE		316L PRODEC		-	
DESCRIPTION		MATERIAL		MAT. LOCATION	
ACCT. NO.	NO.	SER. NO.	DATE	ISSD	DATE
DEL. TO	RECD	ISSD	DATE	RECD	DATE
SURFACE TREATMT		TREATMT		TAG	
METHOD		TAG		PROJECT NUMBER	
PROJECT NAME		N/A		N/A	
DWG. BY: A. ZACHOSZCZ		DATE: 17-Apr-01		PATENT CLEAR:	
CHK. BY:		DATE:		DESIGN ACCT. NO. FE3313	
APPR. BY: D. OSHATZ		DATE:		CATEGORY CODE	
				SCALE: 1/1	
				DO NOT SCALE PRINTS	
				SHEET 1 OF 3	
				DWG. NO. 25B4374	
				REV. A	

ERNEST ORLANDO LAWRENCE  
 BERKELEY NATIONAL LABORATORY  
 UNIVERSITY OF CALIFORNIA - BERKELEY

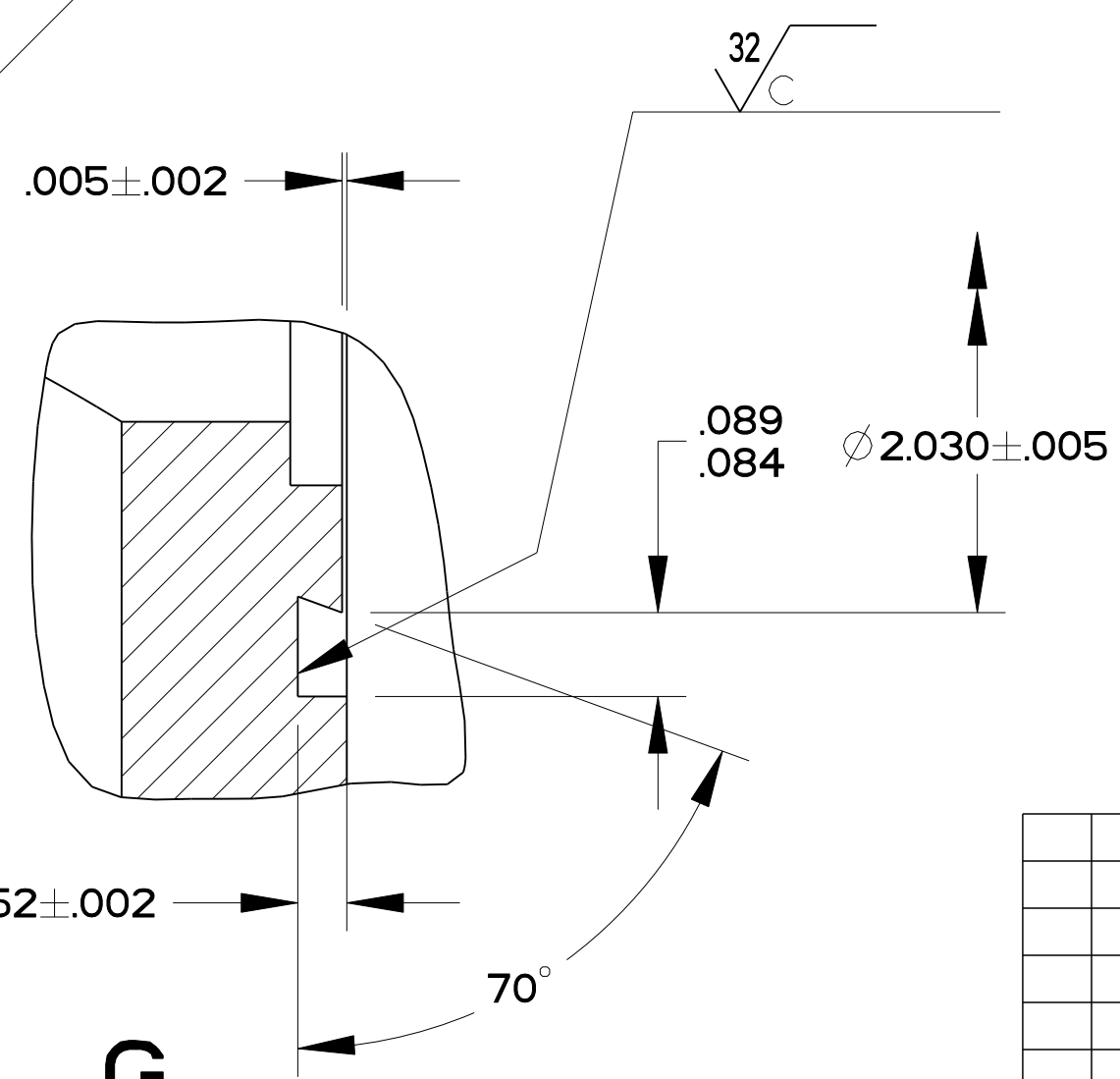
SNS - FES MBET  
 BEAM TRANSPORT SYSTEMS  
 PROFILE MONITOR BEAMBOX

MICROFILMED:   
 DWG. TYPE: PART  
 SHOWN ON: -  
 SCALE: 1/1  
 DO NOT SCALE PRINTS  
 SHEET 1 OF 3  
 DWG. NO. 25B4374  
 REV. A



SECTION A-A

SECTION B-B  
SCALE 3/2



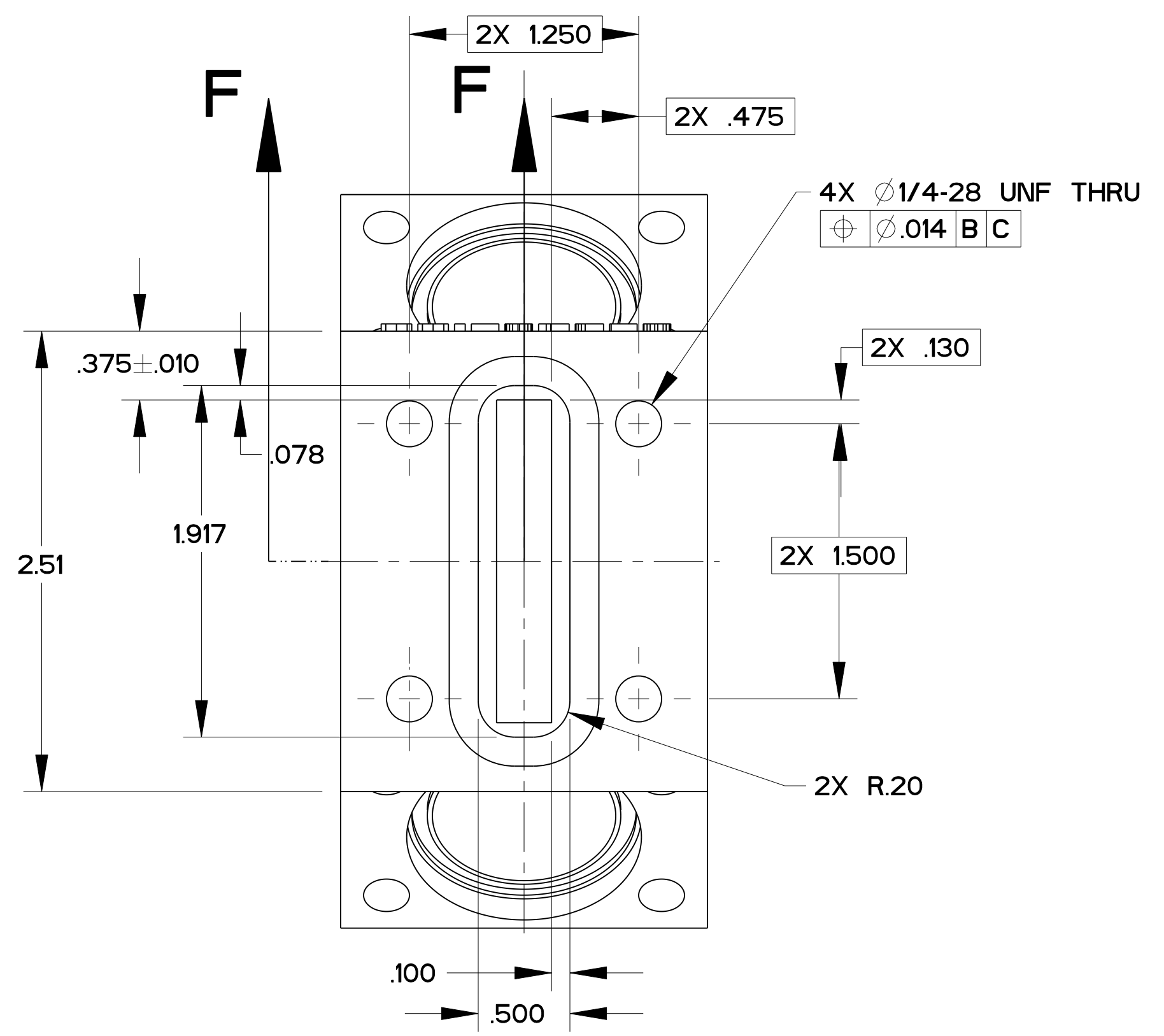
DETAIL G  
SCALE 5/1

REV	DWG	CHK	ZONE	DATE	CHANGES

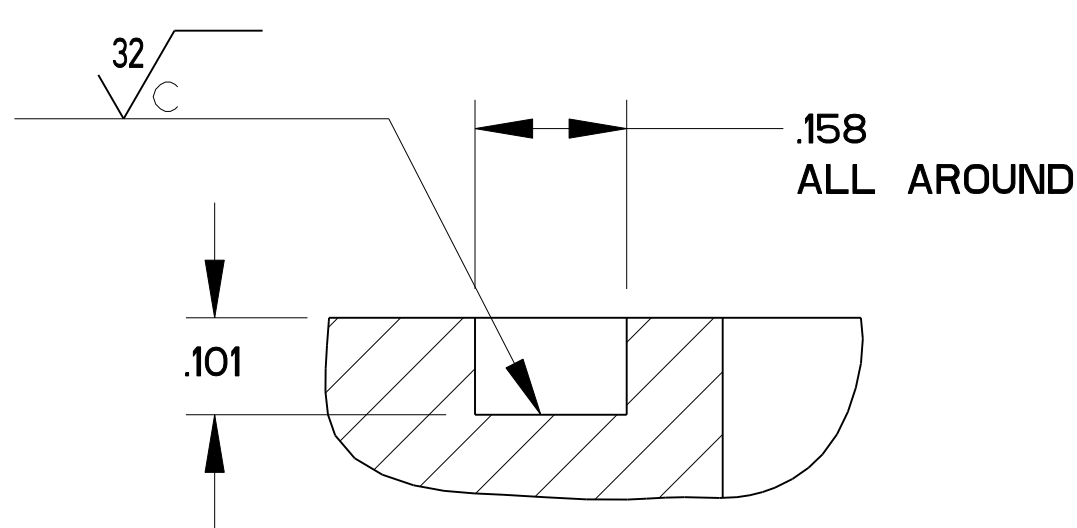
UNLESS OTHERWISE SPECIFIED  
 PROJECTION:   
 TOLERANCES: XX ± 01, FRAC. ± 1/84, XXX ± 001, Angles ± 10°, XXXX ± 0.005, FINISH 125  
 DO NOT SCALE PRINT  
 THREADS ARE CLASS 2  
 CHAMFER ENDS OF ALL SCREW THREADS 30°  
 CUT ROUND, 15 THREAD RELIEF ON MACHINED THREADS  
 BREAK EDGES .016 MAX. ON MACHINED WORK  
 REMOVE BURRS, WELD SPATTER & LOOSE SCALE  
 IN ACCORDANCE WITH ASME Y14.5M & B46.1

2" PLATE		316L PRODEC		-	
DESCRIPTION		MATERIAL		MAT. LOCATION	
SHOP ORDERS		SER. NO.	-	ERNEST ORLANDO LAWRENCE	
ACCT. NO.	NO.	DATE ISSD.	-	BERKELEY NATIONAL LABORATORY	
DEL. TO	RECD.	DATE RECD.	-	UNIVERSITY OF CALIFORNIA - BERKELEY	
SURFACE TREATMT.		TREATMT.	-	SNS - FES MBET	
IDENT. METHOD		TAG	-	BEAM TRANSPORT SYSTEMS	
PROJECT NUMBER		N/A	-	PROFILE MONITOR BEAMBOX	
PROJECT NAME		N/A	-	MICROFILMED:	
DWG. BY	A. ZACHOSZCZ	DATE	17-Apr-01	DWG. TYPE	PART
CHK. BY	-	DATE	-	SHOWN ON	-
APPR. BY	D. OSHATZ	DATE	-	SCALE	1/2
PATENT CLEAR.		DESIGN ACCT. NO.	-	DO NOT SCALE PRINTS	-
CATEGORY CODE		FE3313	-	SHEET 2 OF 3	
DWG. NO.		25B4374	-	REV. A	

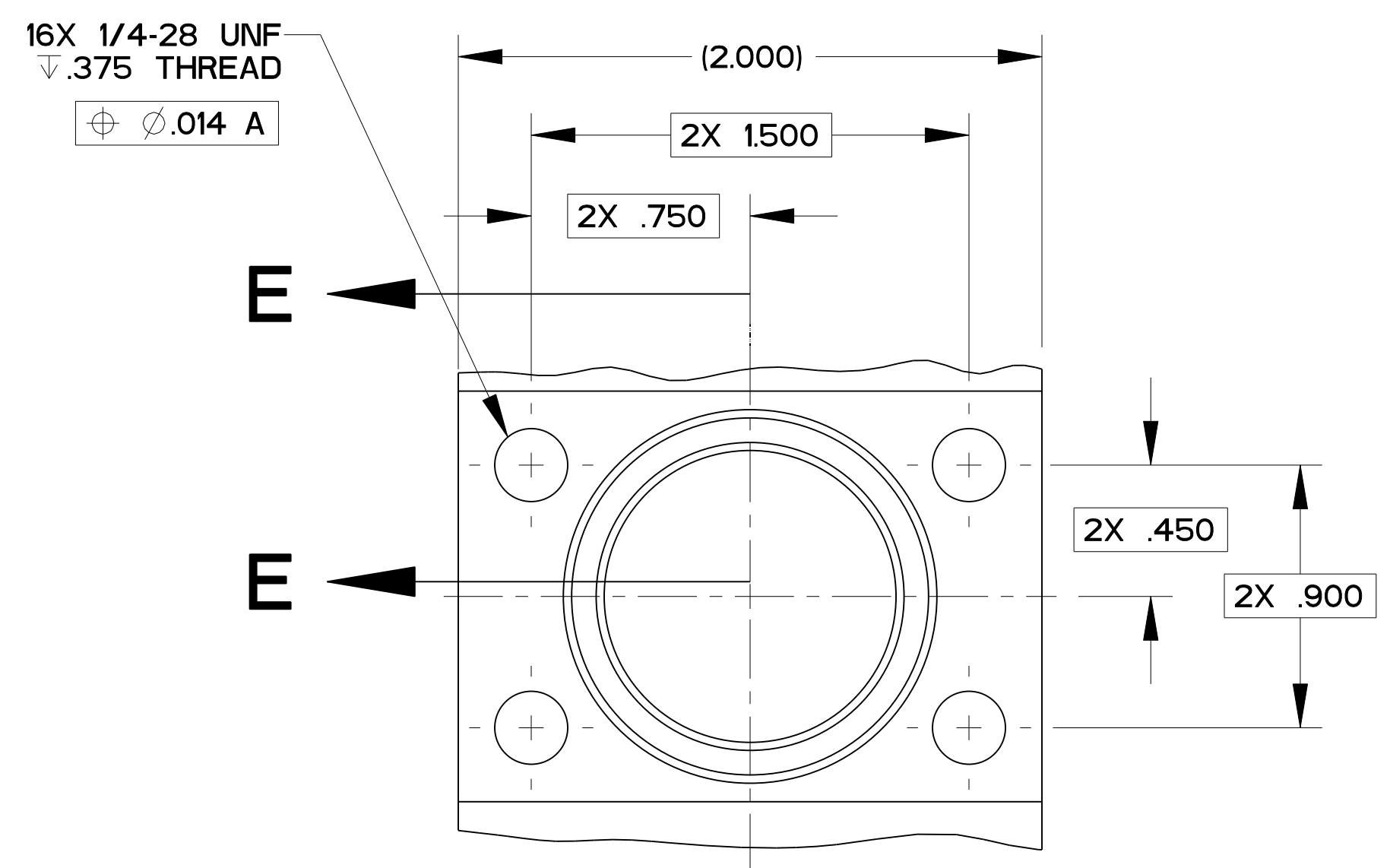




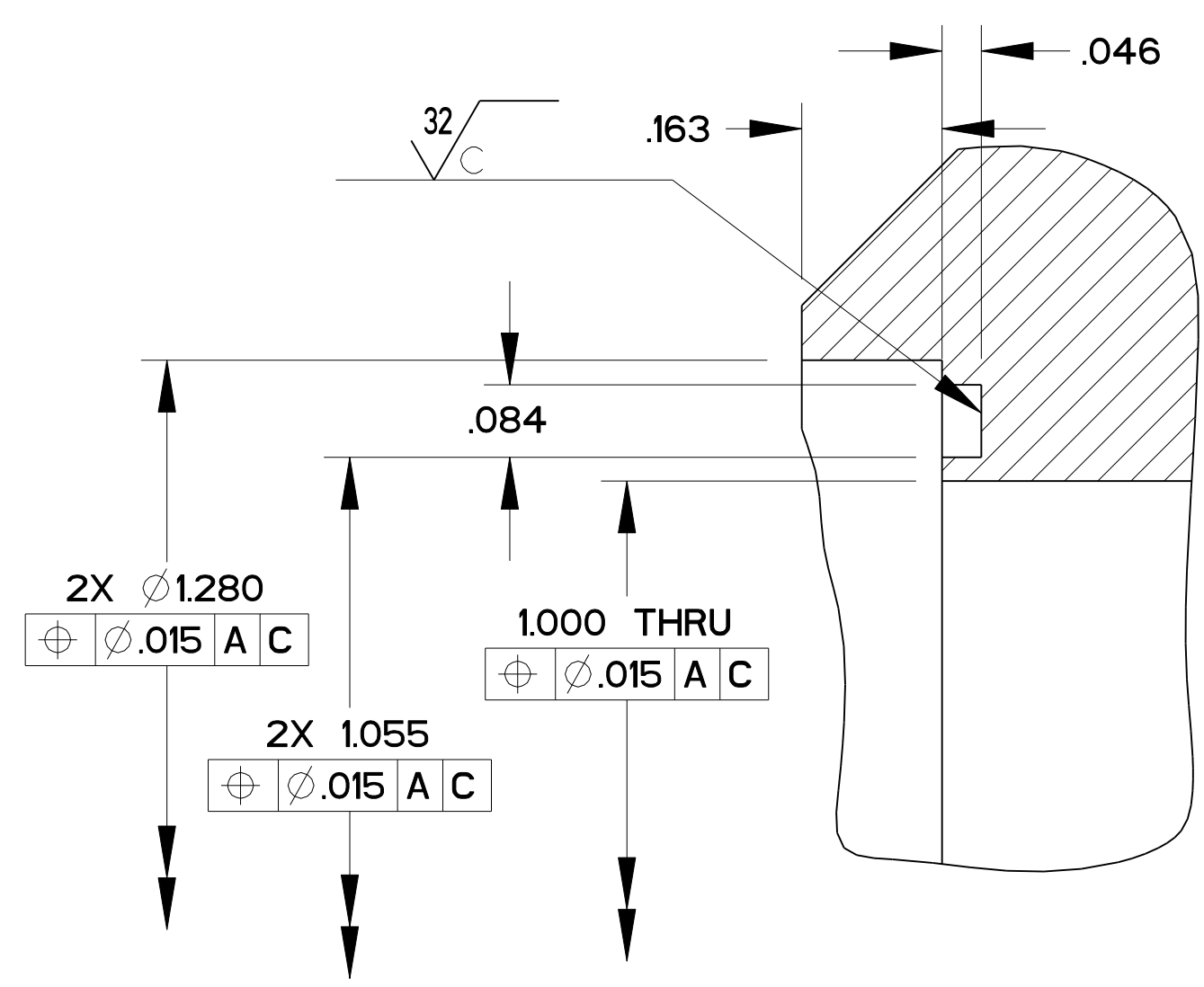
VIEW C-C  
SCALE 3/2



SECTION F-F  
SCALE 5/1



DETAIL D  
SCALE 2/1  
4 PLACES



SECTION E-E  
SCALE 5/1  
4 PLACES

REV	DWG	CHK	ZONE	DATE	CHANGES

UNLESS OTHERWISE SPECIFIED  
 PROJECTION:   
 TOLERANCES: XX ± 0.1    FRAC. ± 1/64  
 XXX ± 0.01    Angles ± 10°  
 XXXX ± 0.005    FINISH 12/   
 DO NOT SCALE PRINT  
 THREADS ARE CLASS 2  
 CHAMFER ENDS OF ALL SCREW THREADS 30°  
 CUT ROUND, 15 THREAD RELIEF ON MACHINED THREADS  
 BREAK EDGES .016 MAX. ON MACHINED WORK  
 REMOVE BURRS, WELD SPLATTER & LOOSE SCALE  
 IN ACCORDANCE WITH ASME Y14.5M & B46.1

2" PLATE		316L PRODEC		-	
DESCRIPTION		MATERIAL		MAT. LOCATION	
ACCT. NO.	NO.	SER. NO.	DATE	ISSD	DATE
DEL. TO	RECD	ISSD	DATE	RECD	DATE
SURFACE TREATMT.		TAG		DO NOT SCALE PRINTS	
IDENT. METHOD		N/A		SHEET 3 OF 3	
PROJECT NUMBER		N/A		REV. A	
PROJECT NAME		N/A		25B4374	
DWG. BY: A. ZACHOSZCZ		DATE: 17-Apr-01		SCALE: 1/2	
CHK. BY:		DATE:		CATEGORY CODE: FE3313	
APPR. BY: D. OSHATZ		DATE:		REV. A	

ERNEST ORLANDO LAWRENCE  
 BERKELEY NATIONAL LABORATORY  
 UNIVERSITY OF CALIFORNIA - BERKELEY

SNS - FES MEBT  
 BEAM TRANSPORT SYSTEMS  
 PROFILE MONITOR BEAMBOX

DO NOT SCALE PRINTS  
 SHEET 3 OF 3  
 REV. A  
 25B4374