



MEBT MEETING AGENDA

March 1, 2001

Mechanical Systems Update

1. **Wire Scanner Beambox (dwg)**
2. **Raft detailed design underway**
3. **Fabrication and Procurement Updates**
 - Chopper Vacuum Enclosures
 - Chopper Target / Beambox
 - BPM's

Electrical Systems Update

1. **Low Level RF**
2. **Rebuncher System**
3. **Beam Diagnostics**

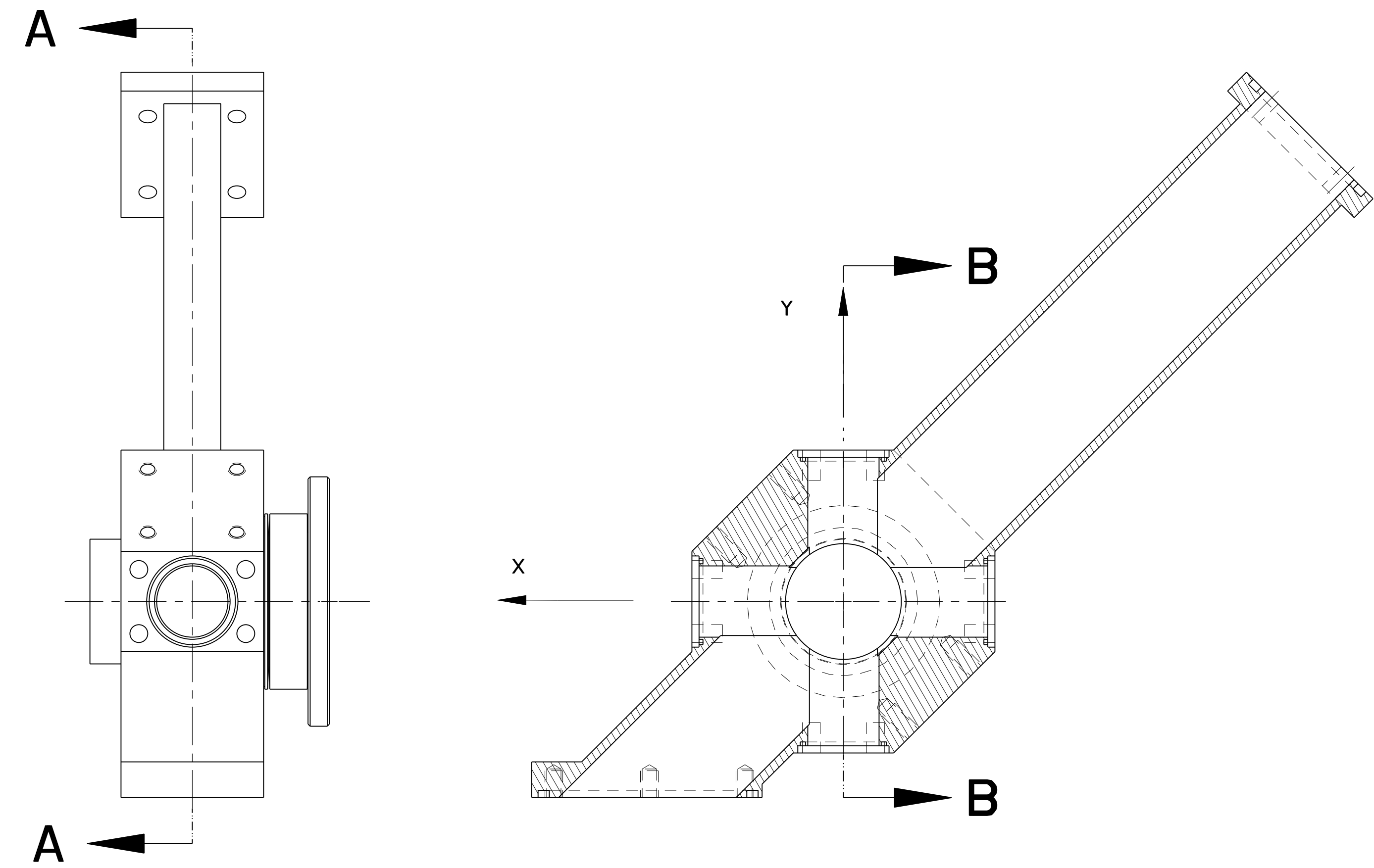
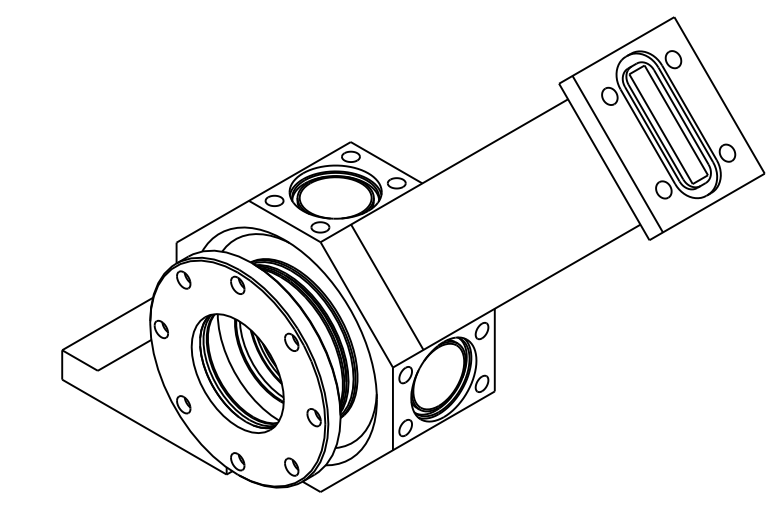
System Integration / Installation

1. **Raft assembly planning**
2. **Control interfaces**

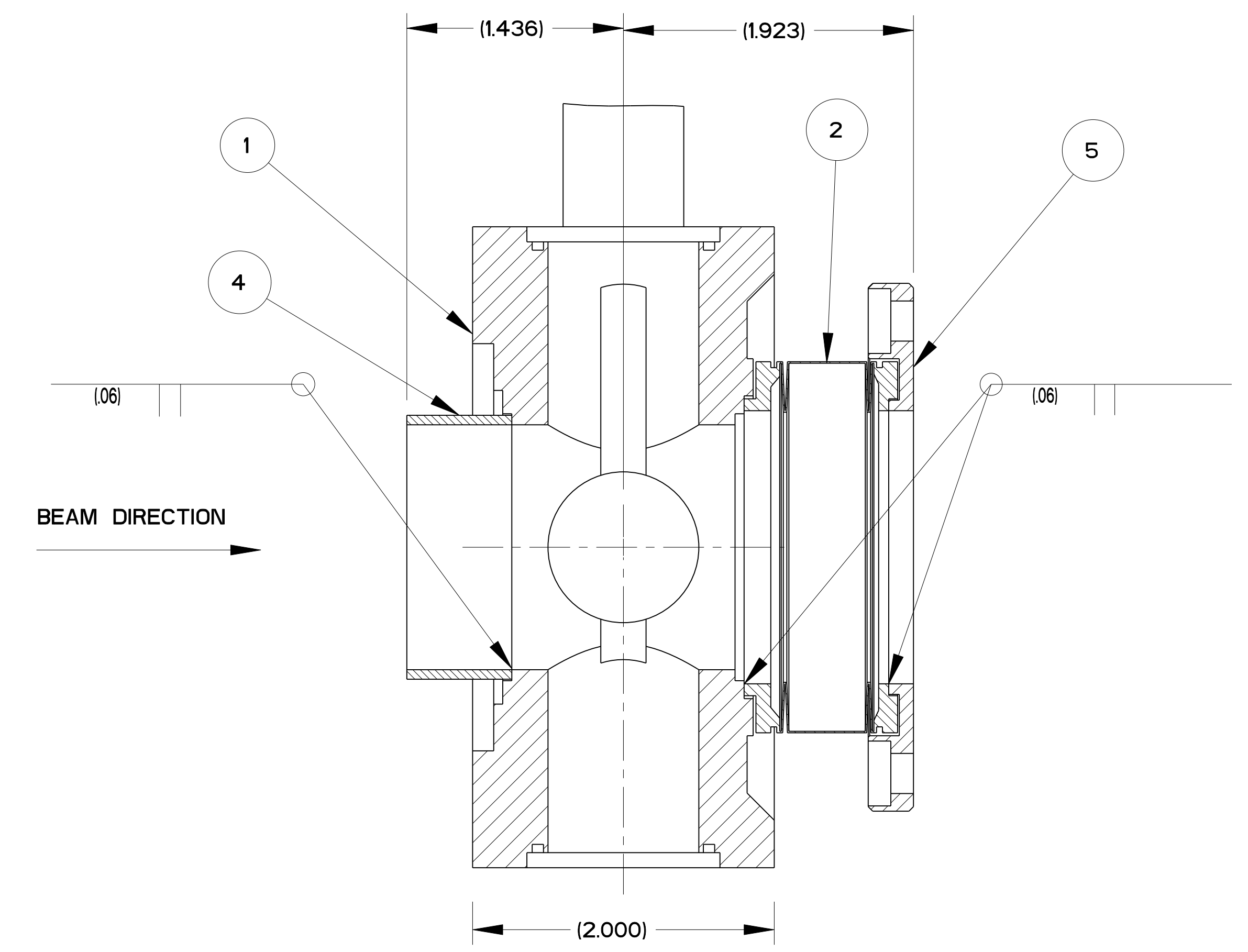
Upcoming Tasks and Milestones

- ◆ Raft Systems FDR 3/31/01 UC
- ◆ Rebuncher Cavity #1 Received 1/31/01 OR
- ◆ Profile Monitor First Article Complete 3/31/01
- ◆ Power Supply Rack Installation Complete 3/31/01
- ◆ Chopper Target Complete 4/30/01
- ◆ Chopper Vacuum Enclosures Complete 5/31/01
- ◆ Raft and Support Structure Complete 5/31/01 OR
- ◆ Rebuncher Amplifiers #2-6 Received 6/30/01
- ◆ Rebuncher Cavity #2-4 Received 6/30/01
- ◆ Profile Monitor all complete 7/31/01

Next Meeting, Thursday, 3/15/01, 10 AM



SECTION A-A



SECTION B-B
SCALE 3/2

NOTES:

1. FINISHED PART TO BE VACUUM TIGHT.
LEAK RATE NOT TO EXCEED 1×10^{-8} TORR - LITERS PER SECOND HELIUM.
2. ULTRA-HIGH VACUUM CLEANING AND PACKING REQUIRED.
3. ASSEMBLE IN CLEAN ENVIRONMENT.
AFTER ASSEMBLY AND WELDING, WRAP TO MAINTAIN CLEANLINESS.

| ITEM | PART NO | REQD | DESCRIPTION | MATERIAL |
|------|---------|------|-------------------------------|---------------------|
| 5 | - | 1 | 40 MM FLANGE | 316 STAINLESS STEEL |
| 4 | - | 1 | 175 OD TUBE | - |
| 2 | - | 1 | 40 MM MEWASA BELLOW | 316 STAINLESS STEEL |
| 1 | 25B437 | 1 | 40 MM PROFILE MONITOR BEAMBOX | 316L PRODEC |

| REV | DWG | CHK | ZONE | DATE | INITIAL | RELEASE | CHANGES |
|-----|-----|-----|------|---------|---------|-----------------|---------|
| A | AZ | | | 2/28/01 | | INITIAL RELEASE | |

| UNLESS OTHERWISE SPECIFIED | |
|---|----------------------------|
| PROJECTION: | |
| TOLERANCES | XX ± 0.1 FRAC ± 1/84 |
| | XXX ± 0.03 Angles ± 10° |
| | XXXX ± 0.010 FINISH |
| DO NOT SCALE PRINT | |
| THREADS ARE CLASS 2 | |
| CHAMFER ENDS OF ALL SCREW THREADS 30° | |
| CUT ROUND, 15 THREAD RELIEF ON MACHINED THREADS | |
| BREAK EDGES .016 MAX. ON MACHINED WORK | |
| REMOVE BURRS, WELD SPLATTER & LOOSE SCALE | |
| IN ACCORDANCE WITH ASME Y14.5M & B46.1 | |

SHOP ORDERS

ACCT NO. _____ NO. _____ DATE ISSD _____

DEL TO _____ DATE RECD _____

SURFACE TREATMT _____

IDENT METHOD TAG _____

PROJECT NUMBER N/A

PROJECT NAME N/A

DWG BY Andrew Zachoszcz DATE 27-Feb-01

CHK BY Daryl Oshatz DATE _____

APR BY Daryl Oshatz DATE _____

ERNEST ORLANDO LAWRENCE BERKELEY NATIONAL LABORATORY UNIVERSITY OF CALIFORNIA - BERKELEY

SNS - FES MEBT PROFILE MONITOR PROFILE MONITOR ASSEMBLY

MICROFILMED: _____

DWG TYPE: **ASSEM**

SHOWN ON: _____

SCALE: **3/4**

DO NOT SCALE PRINTS

PATENT CLEAR: _____

DESIGN ACCT. NO. _____

CATEGORY CODE: **FE3313**

DWG. NO. **25B4364**

SHEET **1** OF **1**

REV. **A**