



MEBT MEETING AGENDA

February 15, 2001

1. **Wire Scanner Mech. FDR ♦**
 - Action Items
 - Fabrication Drawing Completion

2. **Chopper Fabrication / Procurement Update**

3. **BPM Prototype Complete**
 - Passed vacuum leak checks
 - Awaiting electrical test results
 - SNS BPM FDR 2/27/01

4. **Chopper Target Fabrication**
 - Faceplates and Backplates passed CMM inspection
 - Thermal test of braze fixture (dwg)

5. **Raft and Frame Update**
 - Frame Concept (frame, MEBT iso)
 - Raft Status

6. **Upcoming Tasks and Milestones**
 - ♦ Raft Systems FDR 1/31/01 OR
 - ♦ Rebuncher Cavity #1 Received 1/31/01 OR
 - ♦ Profile Monitor First Article Complete 3/31/01
 - ♦ Chopper Target Complete 4/30/01
 - ♦ Chopper Vacuum Enclosures Complete 5/31/01
 - ♦ Raft and Support Structure Complete 5/31/01 OR
 - ♦ Profile Monitor all complete 7/31/01

Next Meeting, Thursday, 3/1/01, 10 AM

Subject: Wire Scanner FDR LBNL Action Items

Date: Wed, 14 Feb 2001 17:11:22 -0800

From: Daryl Oshatz <daryl_oshatz@lbl.gov>

Organization: Lawrence Berkeley National Laboratory

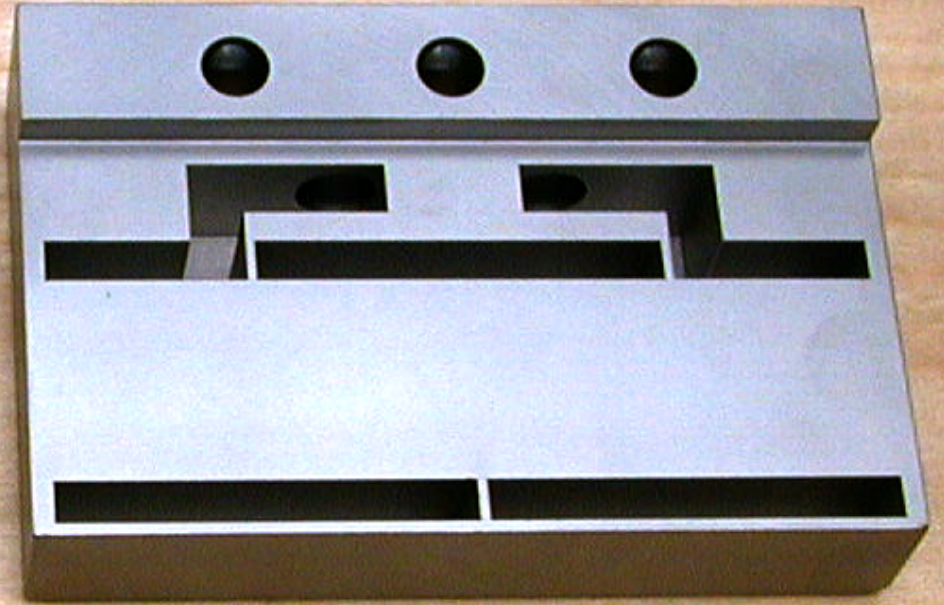
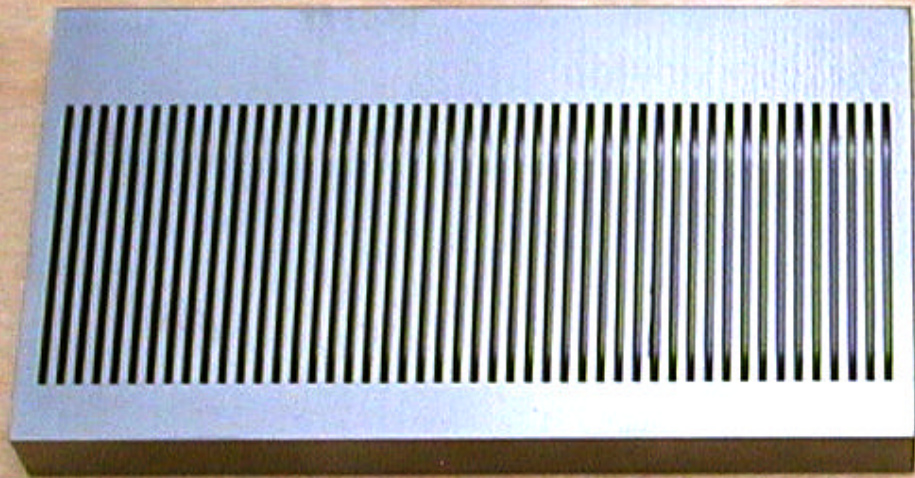
To: Daryl Oshatz <Daryl_Oshatz@lbl.gov>

Wire Scanner Mechanical FDR Action Items:

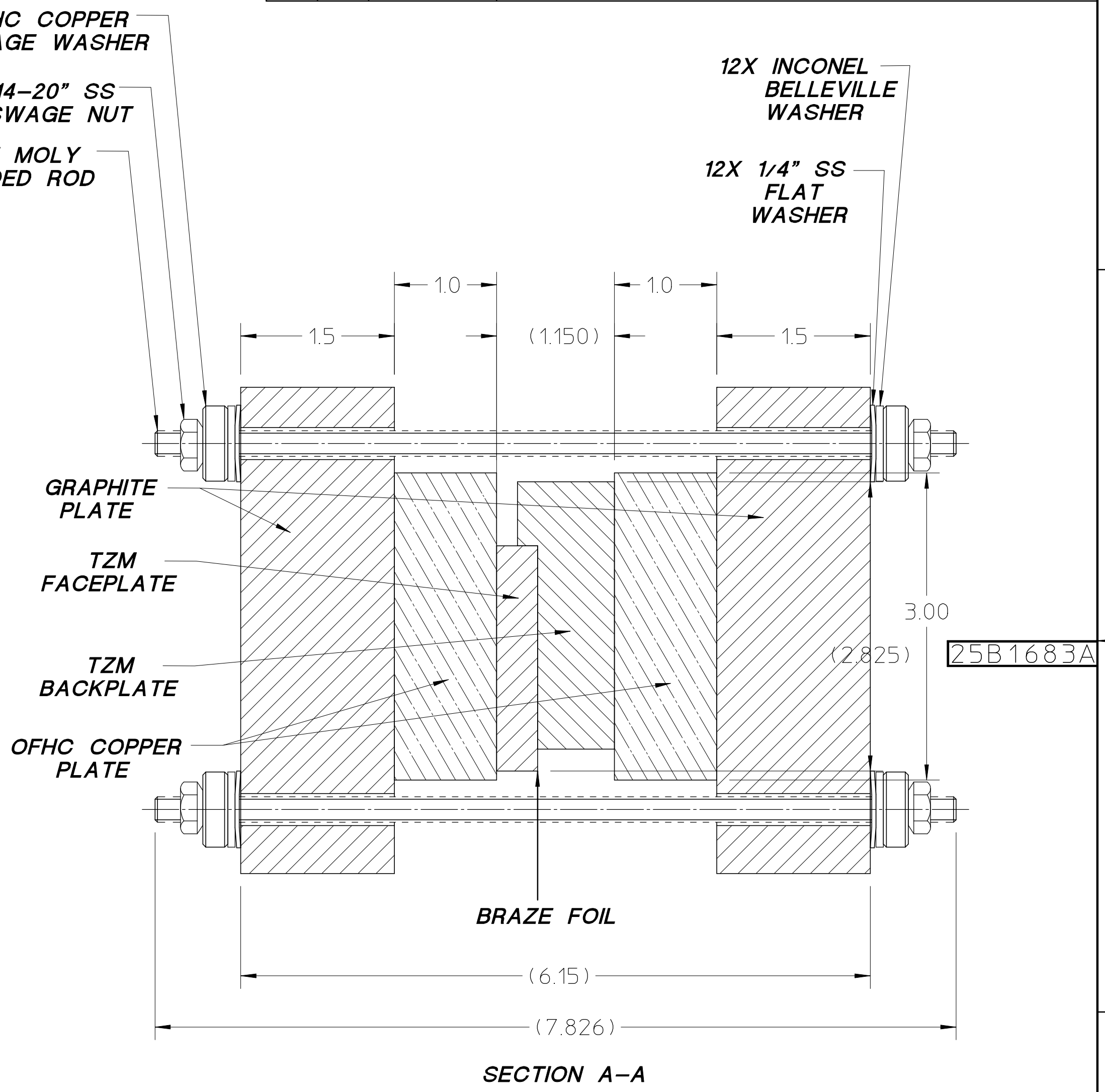
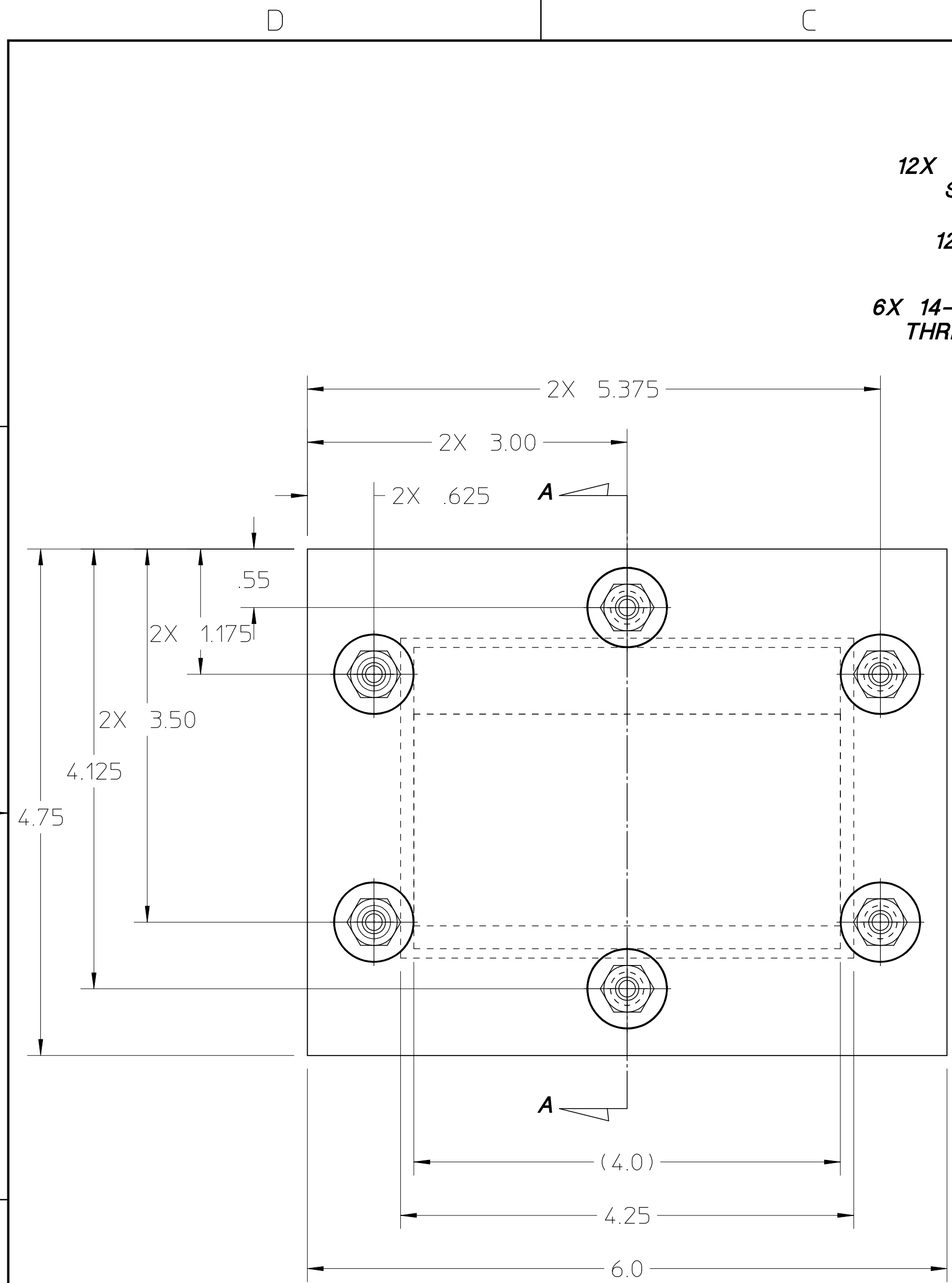
- 1) Update interface drawing to show a dimension of 9.25" from the wire scanner mounting flange to the beamline bore of the beambox.
- 2) Determine probable surface finish in the slot in which the wire scanner fork slides.
- 3) Add a stay-clear envelope around the beambox windows for laser wire hardware access.

--

Daryl Oshatz
Lawrence Berkeley National Laboratory
One Cyclotron Road / MS 71-259
Berkeley, CA 94720
Phone: 510-486-6679
Fax: 510-486-4544
daryl_oshatz@lbl.gov



REQ	ITEM	PART NUMBER	DESCRIPTION



REV	DWG	CHK	ZONE	DATE	INITIAL RELEASE CHANGES	UNLESS OTHERWISE SPECIFIED		SHOP ORDERS			LAWRENCE BERKELEY LABORATORY UNIVERSITY OF CALIFORNIA-BERKELEY						
A						TOLERANCES	.X ± .1	FRAC. ± 1/64	ACCT. NO.	SERIAL NO.	SNS - FES MEBT						
							.XX ± .02	ANGLES ± .01°	DATE ISSD	DATE REQD.	NO. REQD.	MECHANICAL BEAM TRANSPORT SYSTEMS					
							.XXX ± .005	FINISH 125√	DELIVER TO			CHOPPER TARGET BRAZE FIXTURE ASSEMBLY					
							THREADS ARE CLASS 2 CHAMFER ENDS OF ALL SCREW THREADS 30°. CUT 1.5 PITCH THRU RELIEF WITH ROUND NOSE TOOL ON MACHINE CUT THREADS.		SURFACE TREATMENT -		PATENT CLEAR		DWG. TYPE	SHOWN ON	SCALE	FULL	DO NOT SCALE PRINTS
							BREAK EDGES .016 MAX. ON MACHINED WORK REMOVE BURRS WELD SPLATTER & LOOSE SCALE REFERENCES: ANSI Y14.5 & B46.1.		IDENT. METH. TAG		MICROFILMED		ASSEMBLY	-	DWG. NO.	SIZE	REV.
									DWG. BY D. OSHATZ		DATE 01-31-01		DESIGN ACCT. NO.	CATEGORY CODE	25B1683		A
									CHK. BY		DATE		-	FE3312			

