



# MEBT MEETING AGENDA

October 25, 2001

---

## Mechanical Systems Update

1. **Assembly Status**
  - Raft 1 Assembly ([photo](#))
    - Fiducialization ([results](#))
  - Rafts 2 ([photo](#))
2. **Design Status ([MEBT](#))**
  - PM5 vacuum manifold ([image](#))
  - Raft assembly drawings
  - Water system ([views](#))
  - Quad power lead routing
  - Quad Electrical Covers

## Electrical Systems Update

1. **Low Level RF**
2. **Rebuncher System**
3. **Beam Diagnostics**

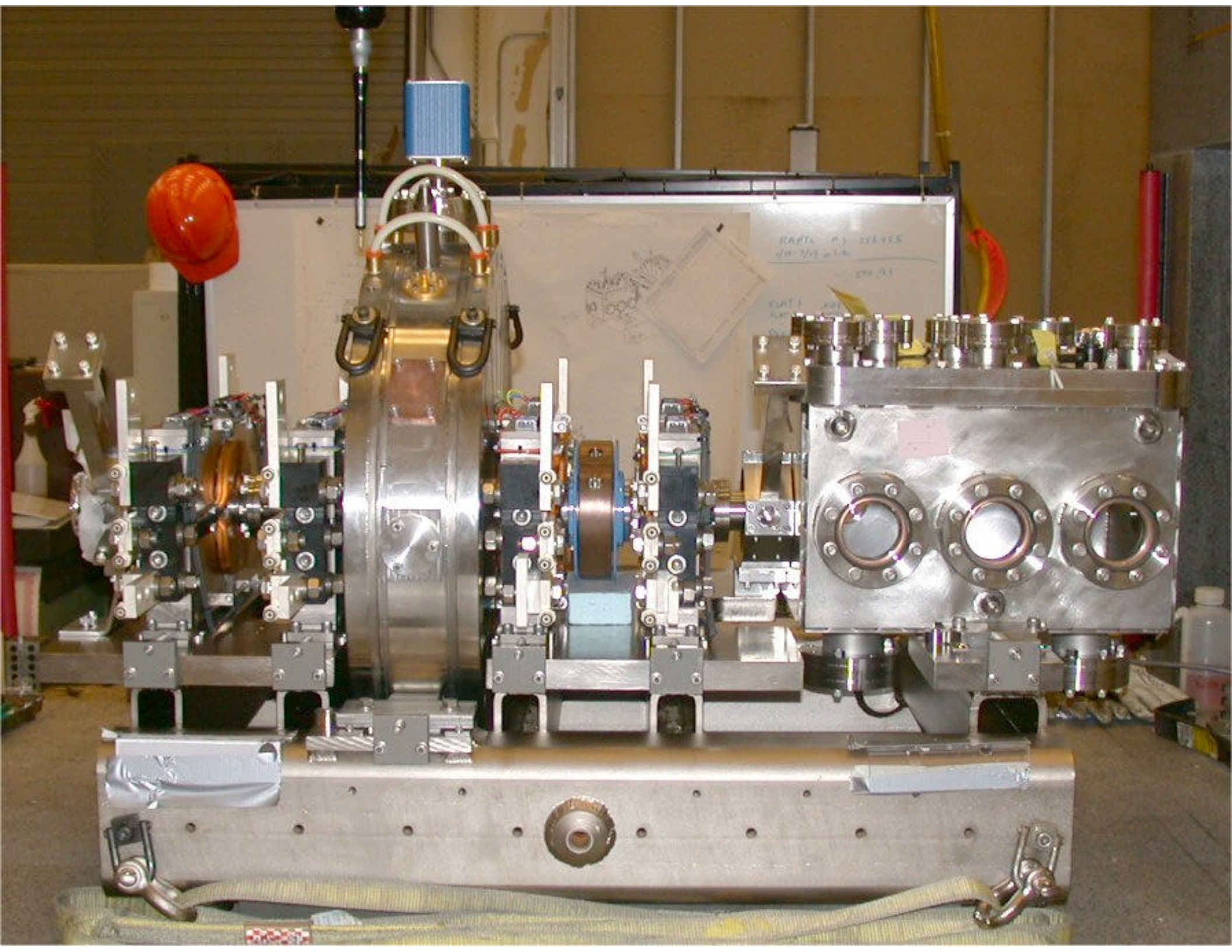
## System Integration / Installation

1. **Installation of MEBT frame**

## Upcoming Tasks and Milestones

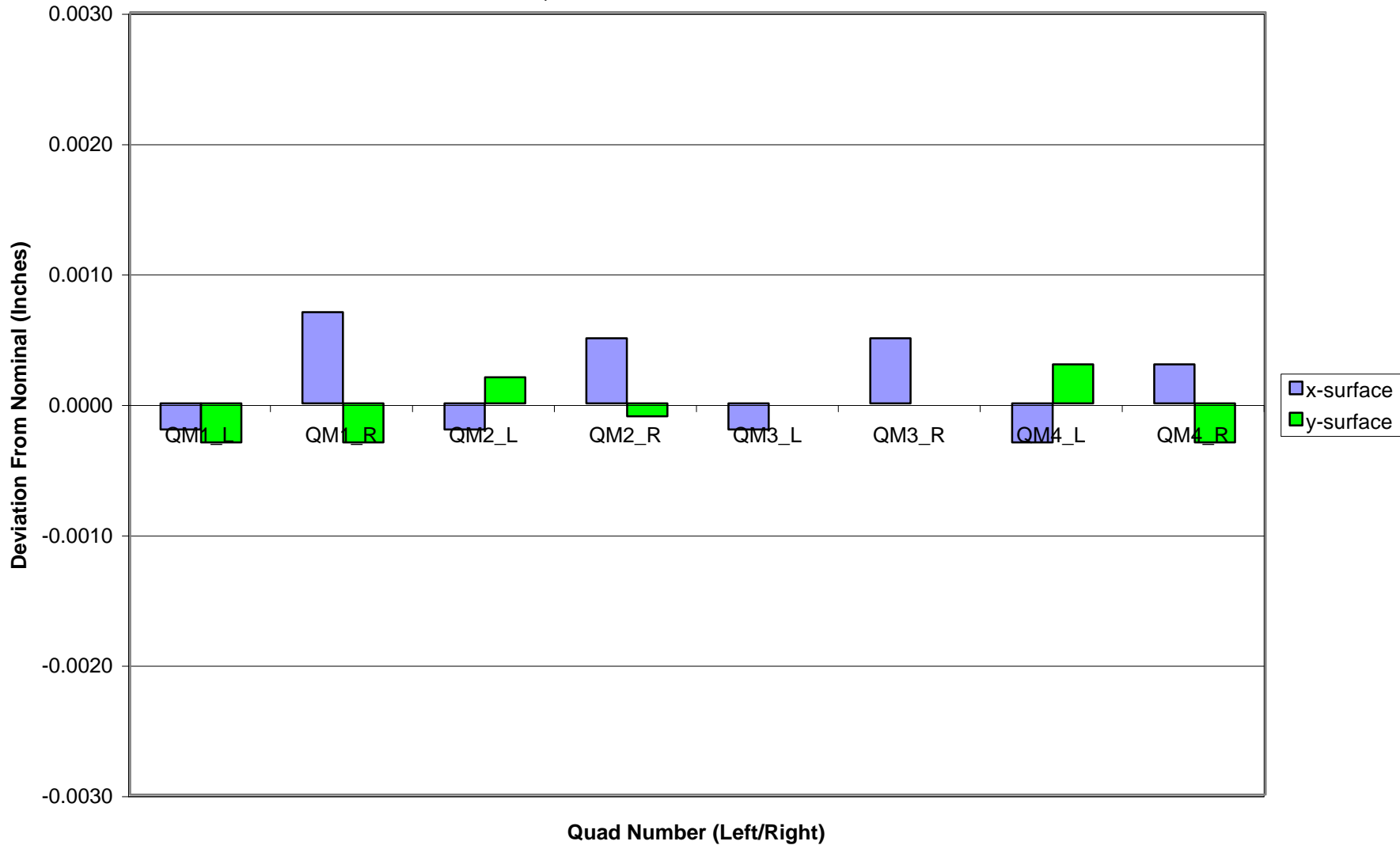
- ◆ Rebuncher Cavity #2-4 Received 6/30/01
- ◆ Profile Monitor all complete 7/31/01

*Next Meeting: Thursday, 11/8/01, 10 AM*



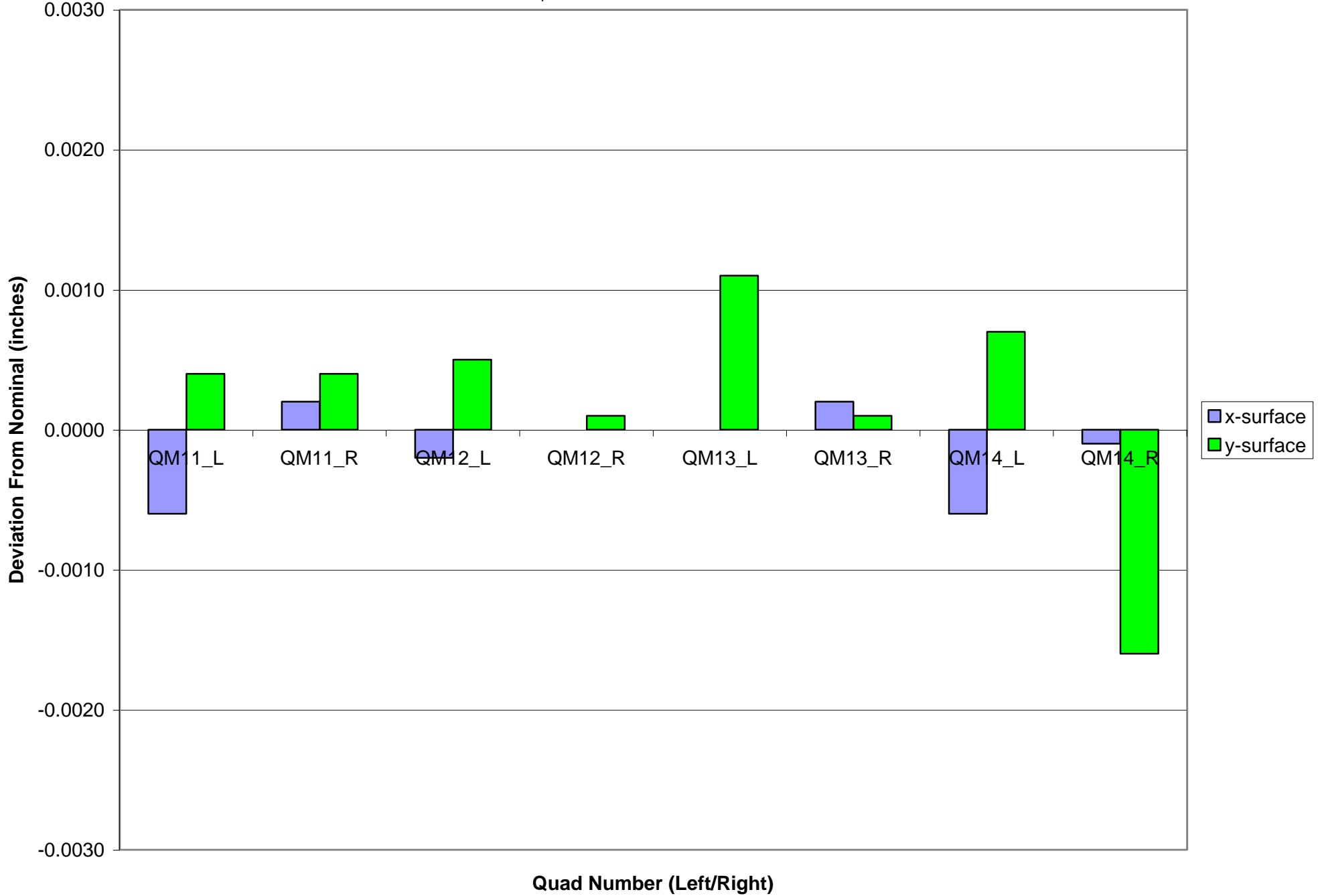
### Raft 1 Quad Locational Deviations (x&y)

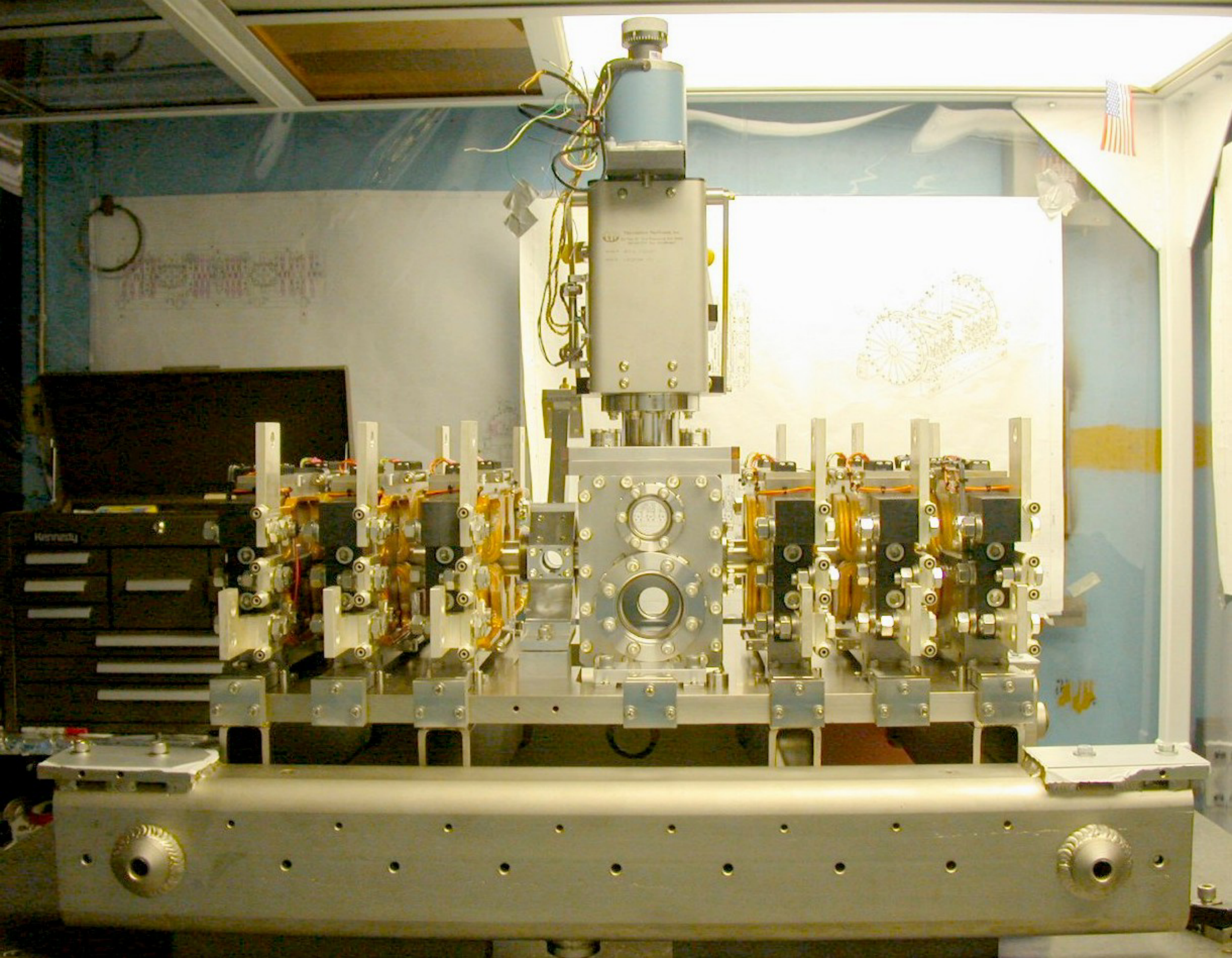
Deviation values: the difference between the measured position of each fiducial surface and its nominal position. Measurements taken 10/23-10/24/01.

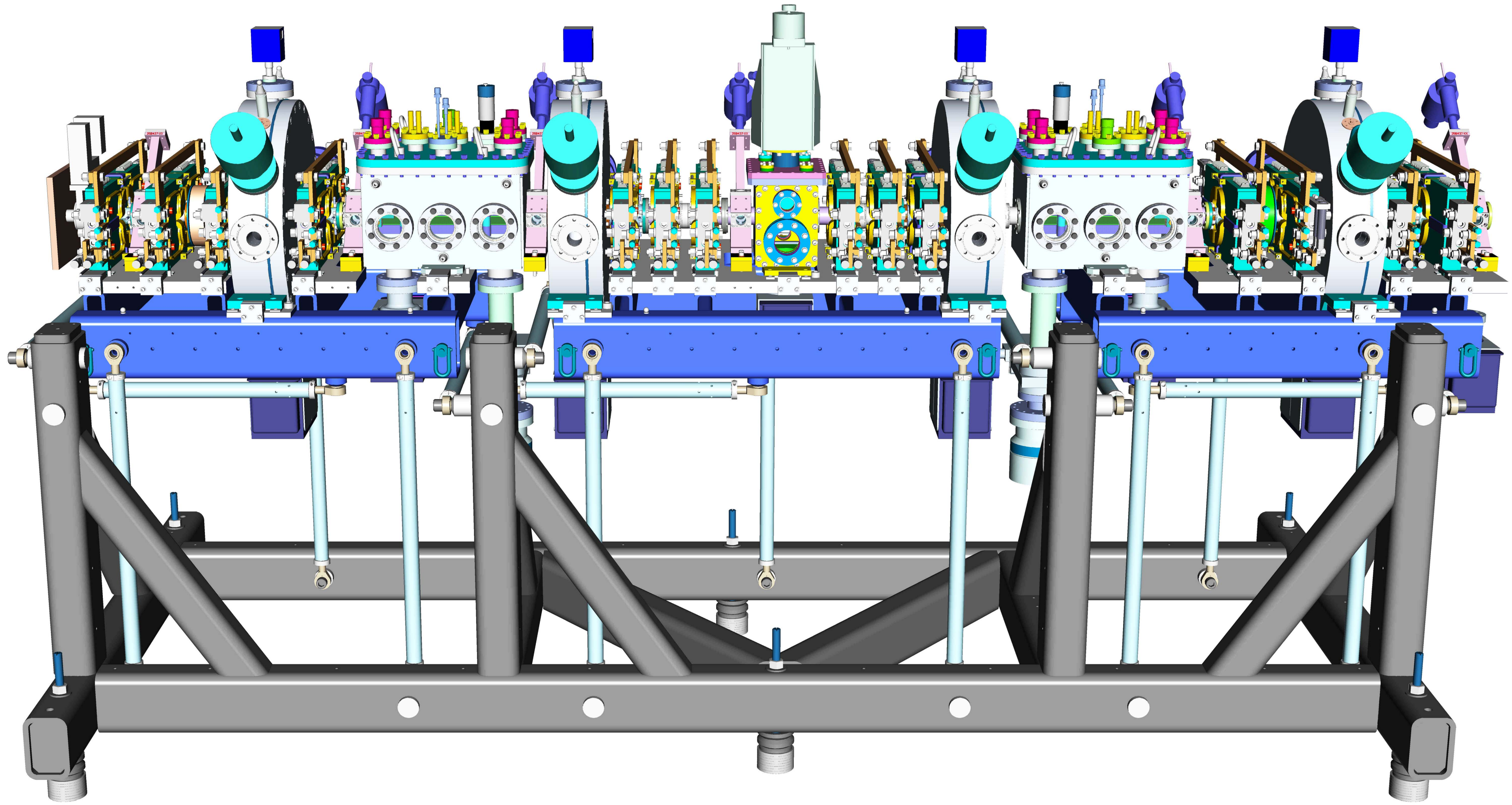


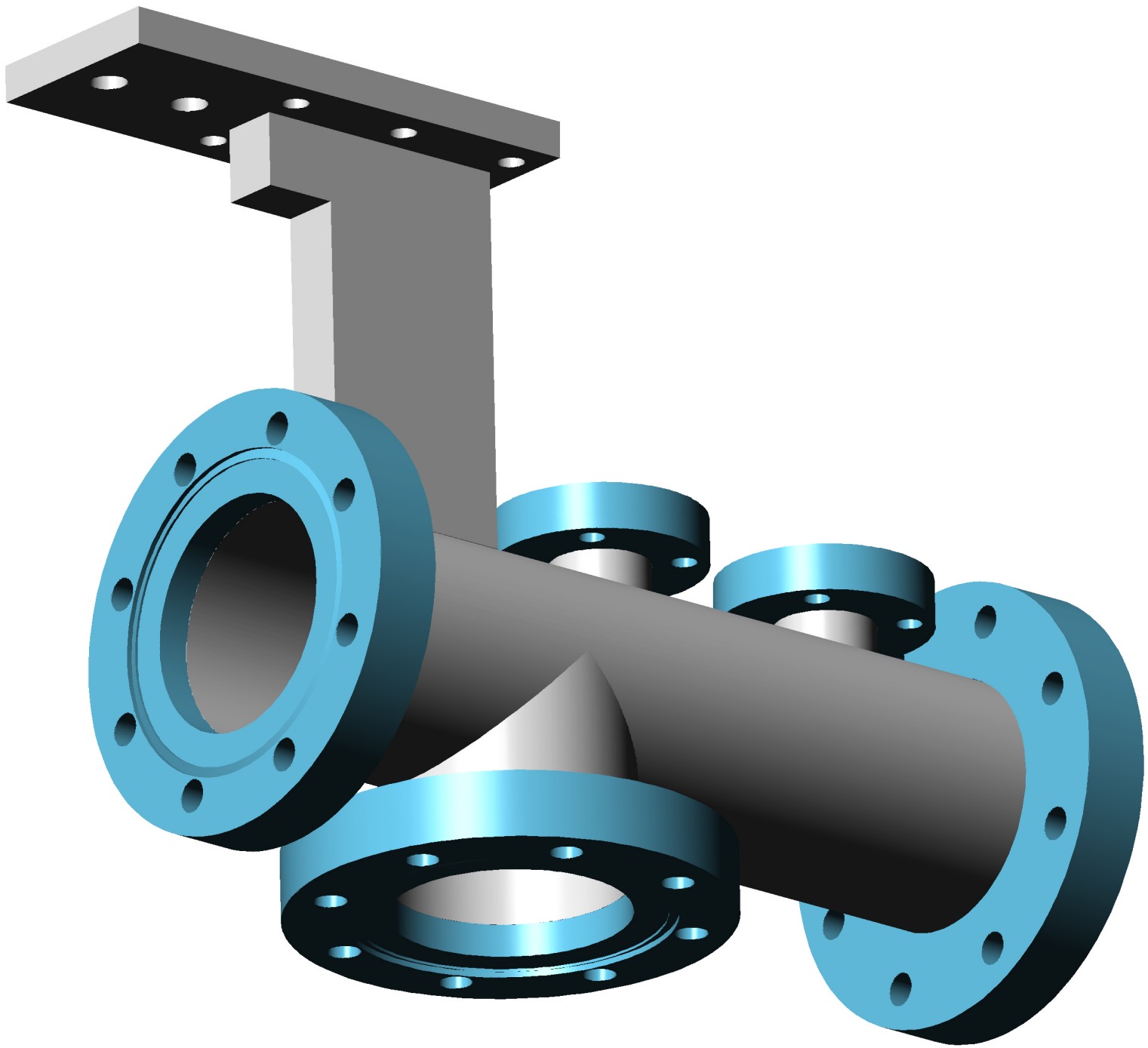
### Raft 3 Quad Locational Deviations (x&y)

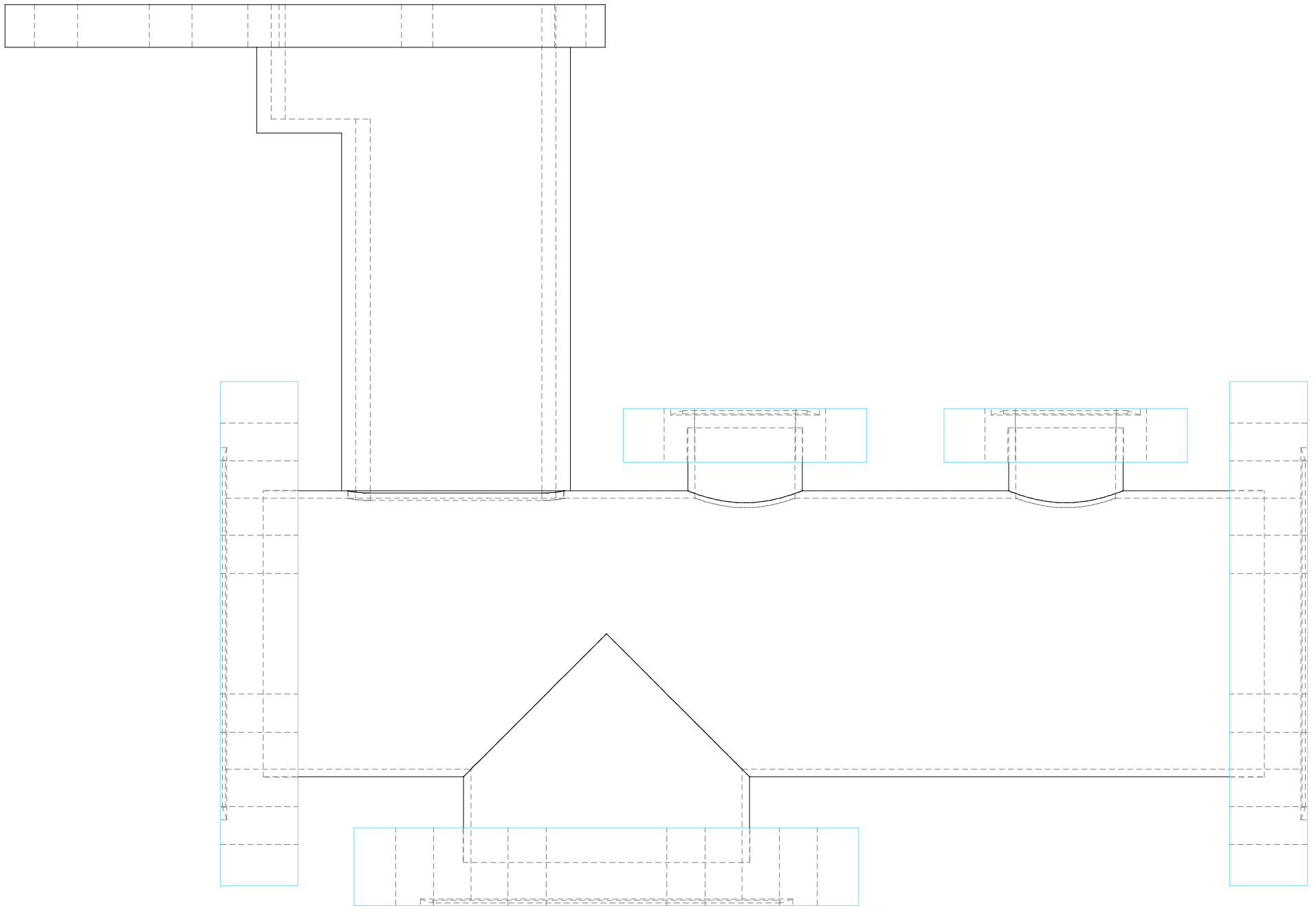
Deviation values: the difference between the measured position of each fiducial surface and its nominal position. Measurements taken 10/4-10/8/01.



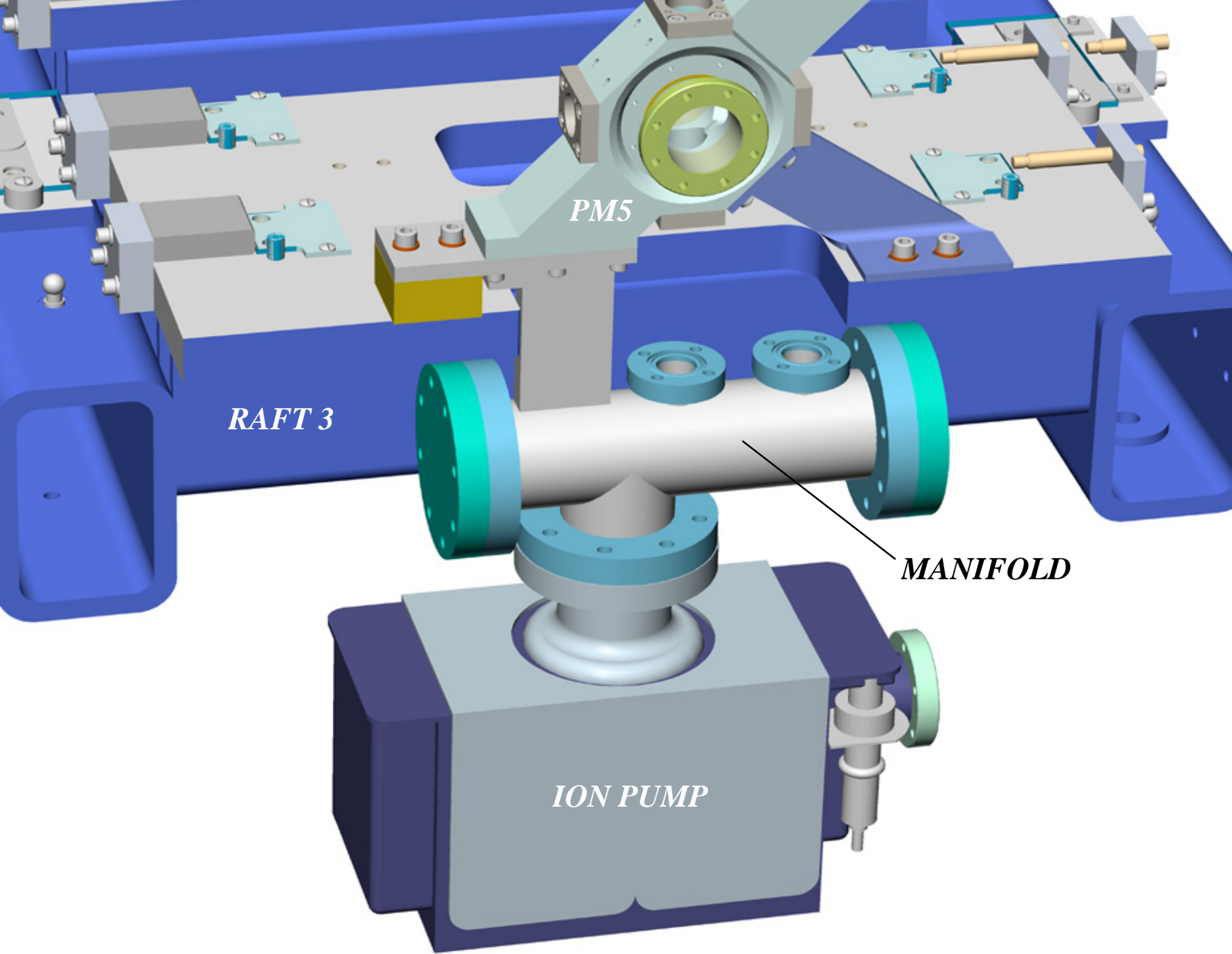










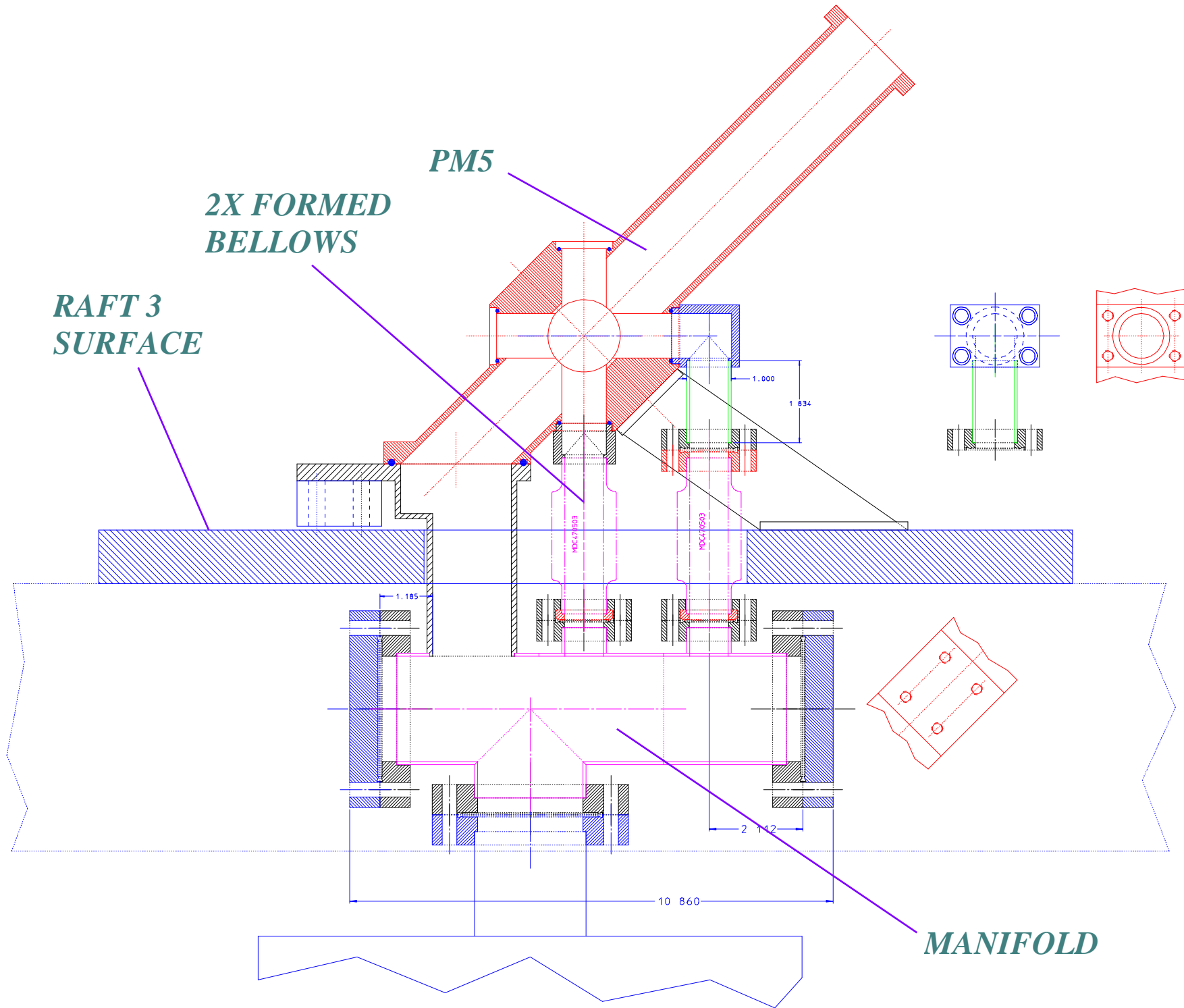


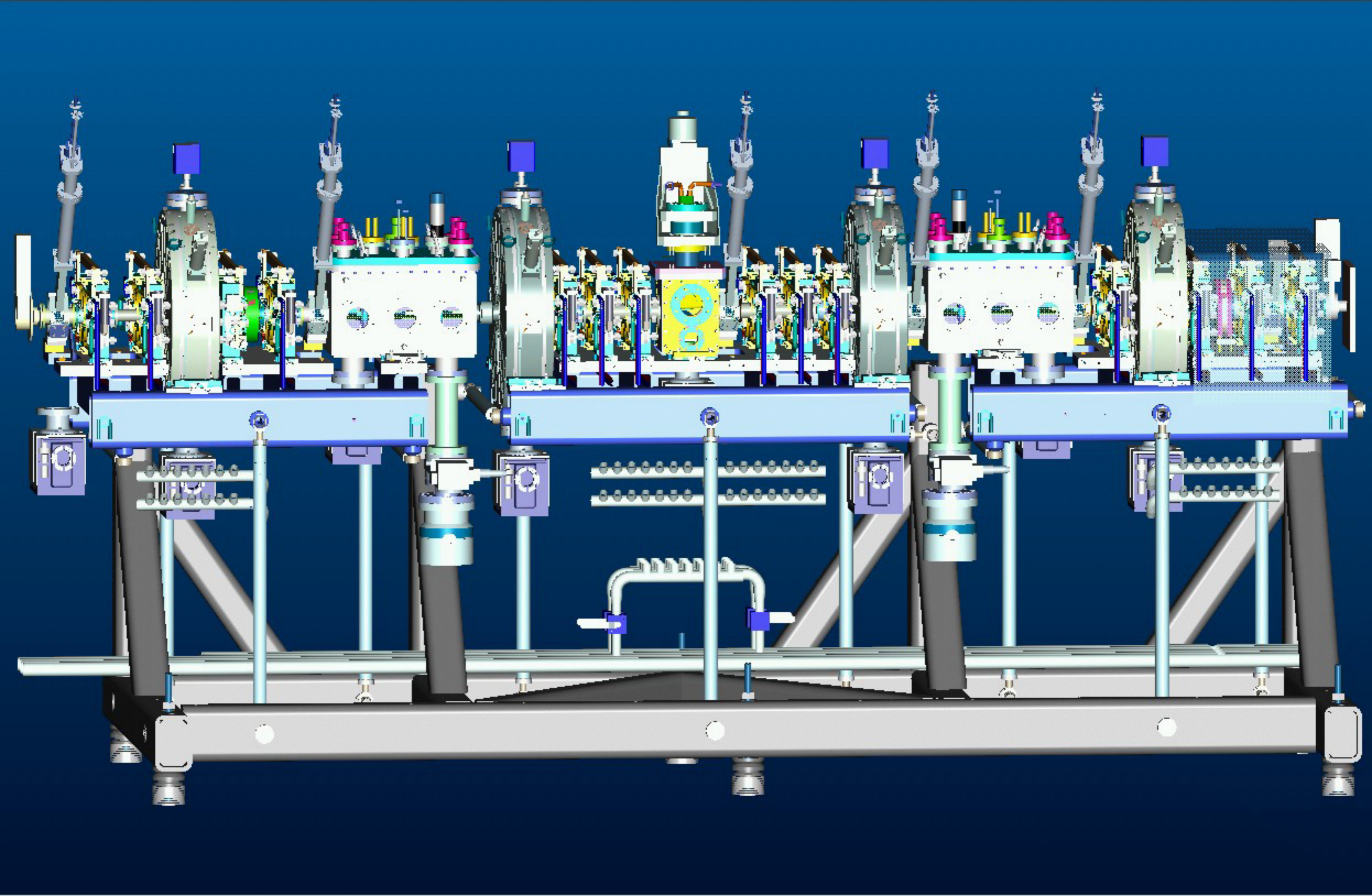
*PM5*

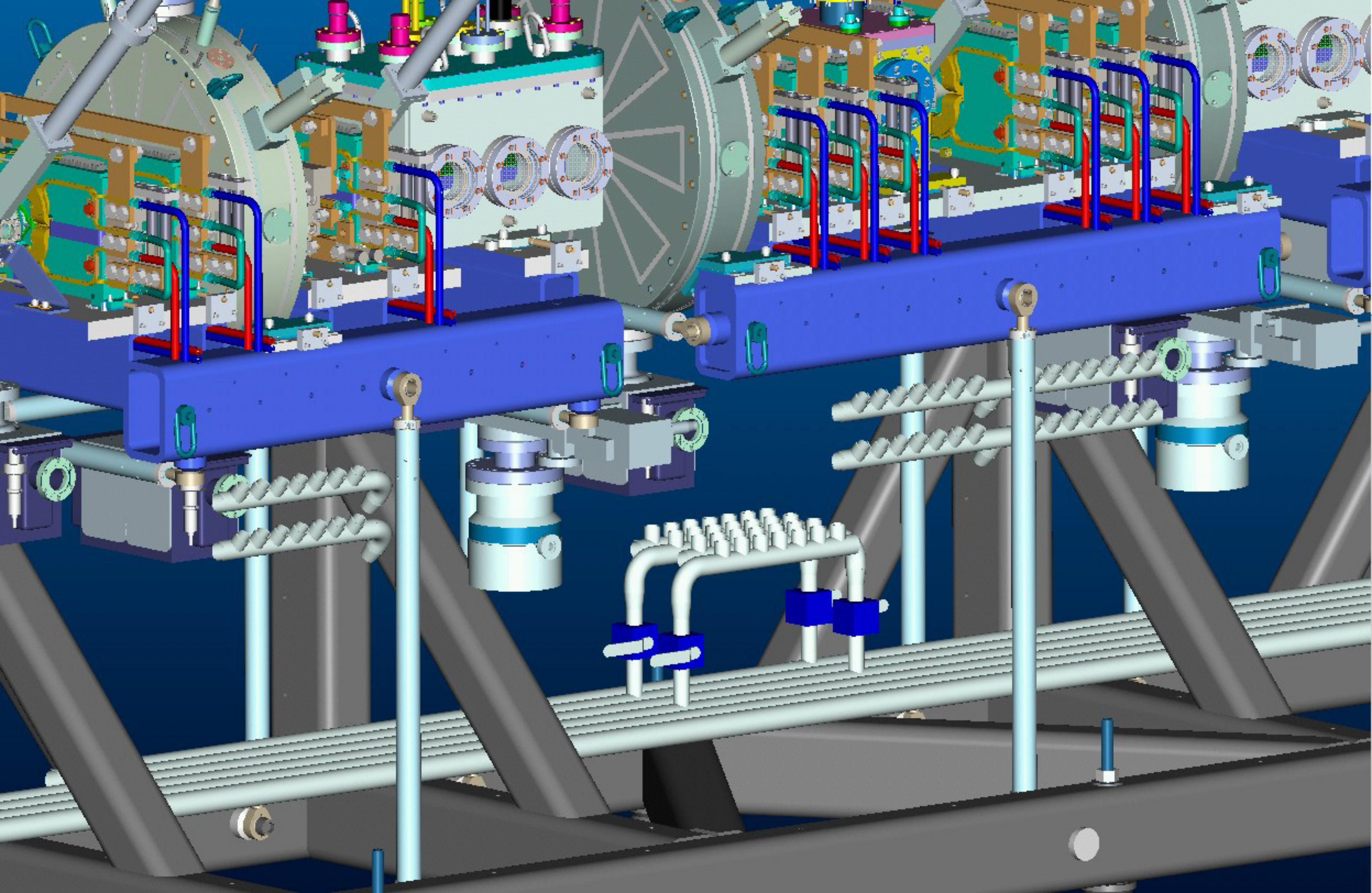
*RAFT 3*

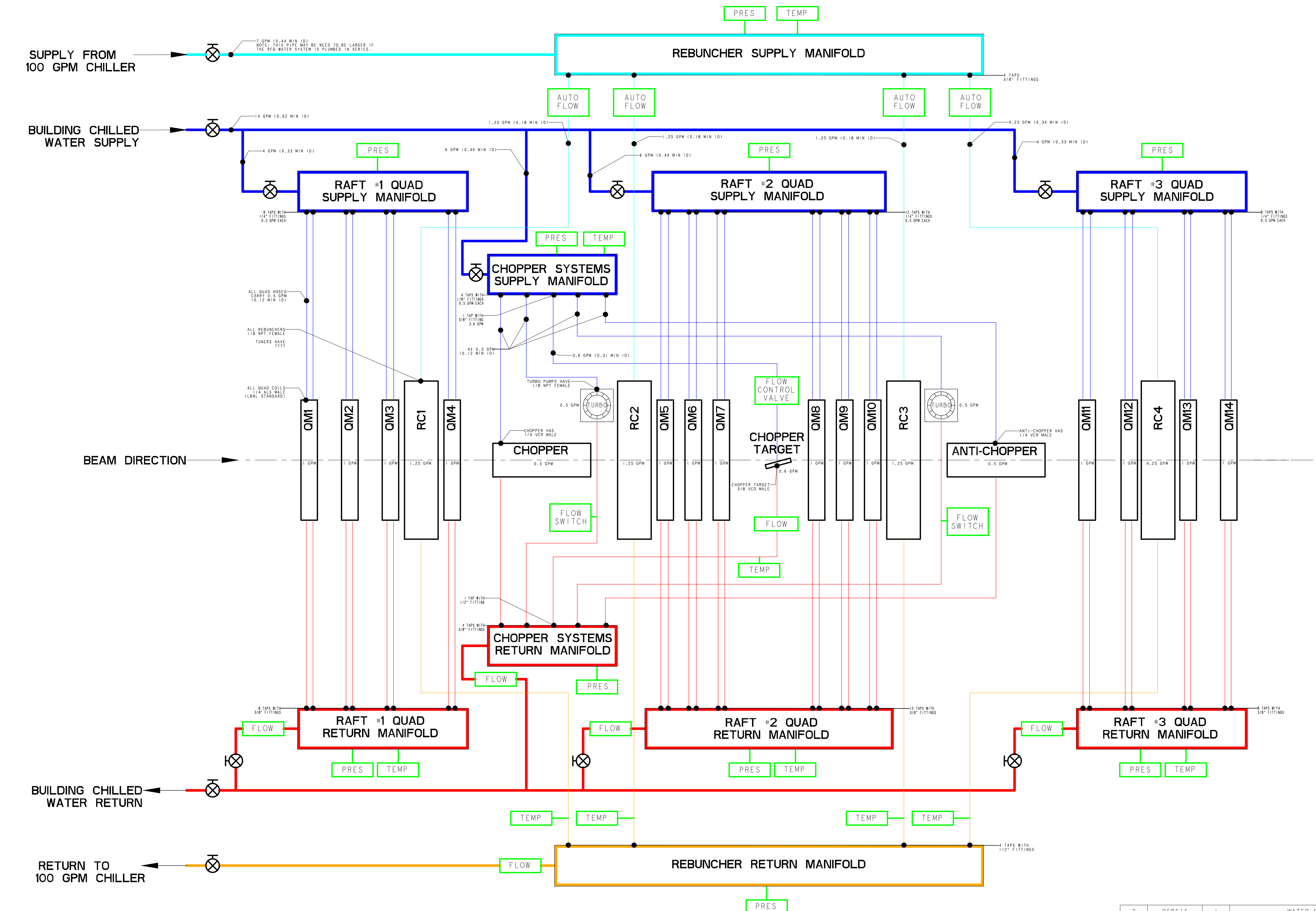
*MANIFOLD*

*ION PUMP*









BEAM DIRECTION →

- 100 GPM CHILLER SUPPLY
- 100 GPM CHILLER RETURN
- CHILLED WATER SUPPLY
- CHILLED WATER RETURN
- TEMP THERMOCOUPLE
- PRES PRESSURE TRANSDUCER
- FLOW FLOW METER
- MANUAL VALVE

REV	DWG	CHK	ZONE	DATE	CHANGES

UNLESS OTHERWISE SPECIFIED  
 PROJECTION:   
 TOLERANCES:  
 X.X ± 0.1    FRAC. ± 1/64  
 X.XX ± 0.03    Angles ± 1.0°  
 X.XXX ± 0.010    FINISH 125/  
 DO NOT SCALE PRINT  
 THREADS ARE CLASS 2  
 CHAMFER ENDS OF ALL SCREW TRENDS 30°  
 CUT ROUND, 1.5 THREAD RELIEF ON MACHINED THREADS  
 BREAK EDGES .016 MAX. ON MACHINED WORK  
 REMOVE BURRS, WELD SPATTER & LOOSE SCALE  
 IN ACCORDANCE WITH ASME Y14.5M & B46.1

2	25B615	1	WATER SYSTEM ASSEMBLY SKELETON	-
1	-	13	QUAD PLUMBING ASSY	-
ITEM	PART NO	REOD	DESCRIPTION	MATERIAL

PROJECT: N/A  
 DWG BY: D. OSHATZ  
 DATE: 22-May-01

**ERNEST ORLANDO LAWRENCE**  
**BERKELEY NATIONAL LABORATORY**  
 UNIVERSITY OF CALIFORNIA - BERKELEY

SNS - FES MBT  
 MECHANICAL SUBSYSTEMS  
 WATER SYSTEM ASSEMBLY

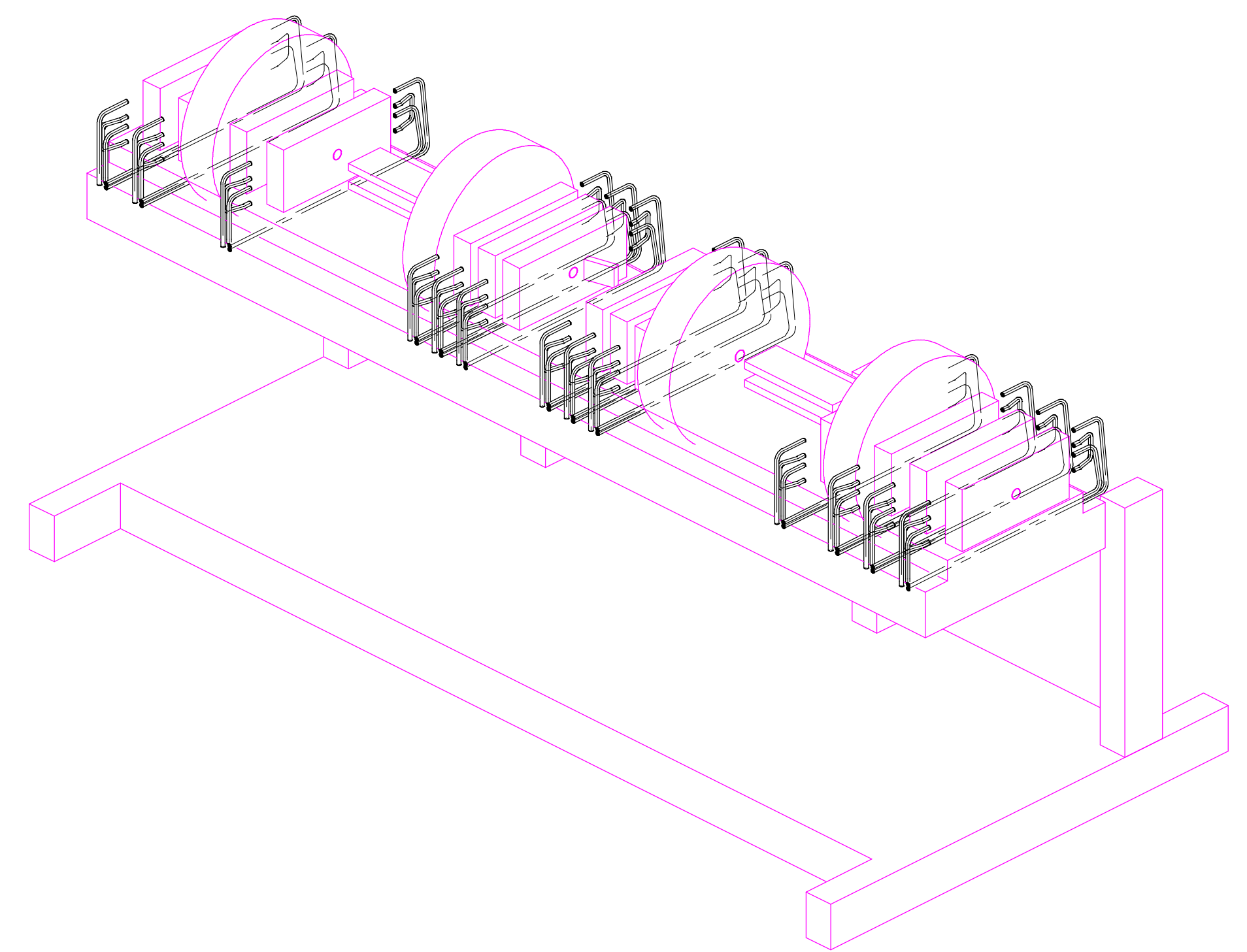
ACCT NO.    NO. REQD    SER NO.    DATE ISSD    DATE RECD

SURFACE TREATMENT    TAG    PROJECT NUMBER

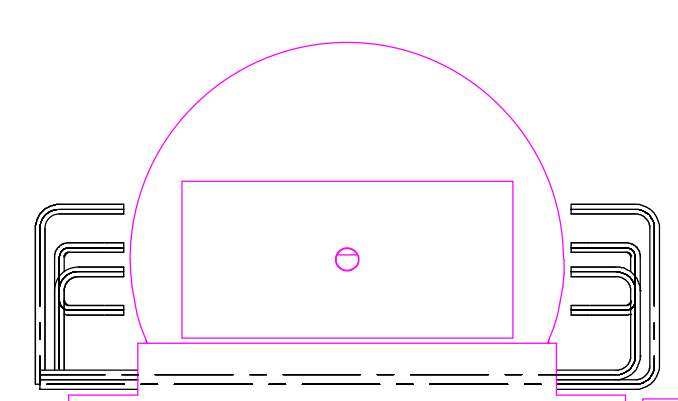
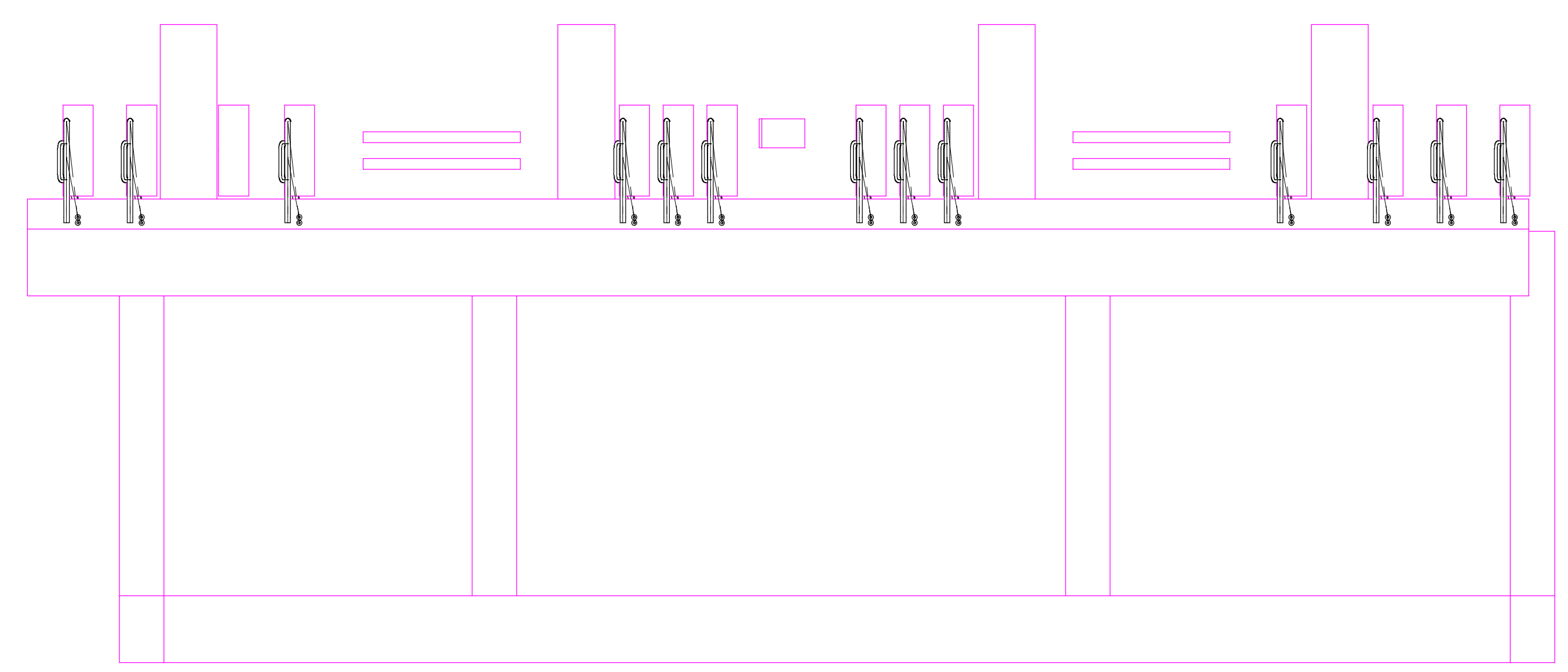
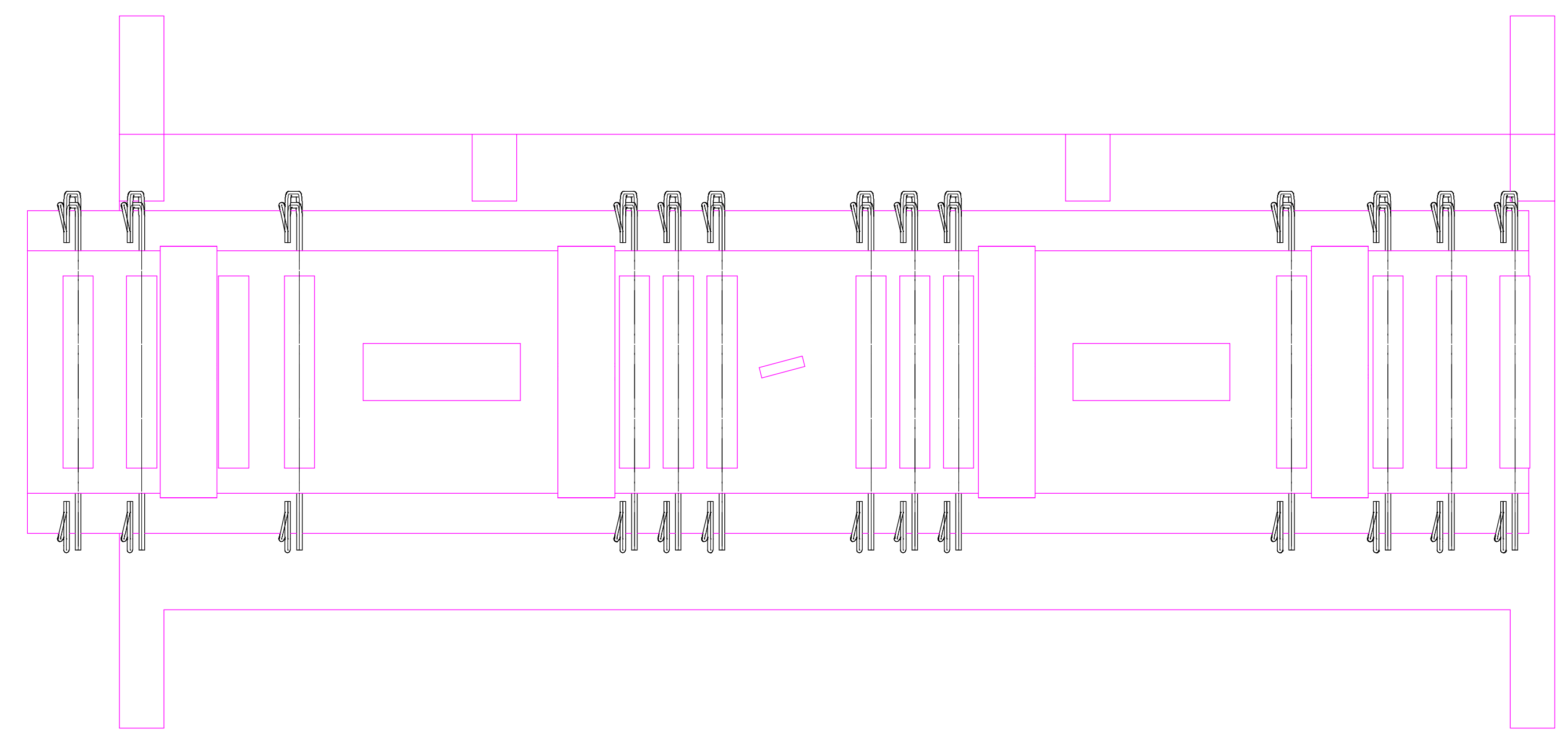
DO NOT SCALE PRINT    DWG BY: D. OSHATZ    DATE: 22-May-01

CHECK BY:    DATE:    PATENT CLEAR:    DESIGN ACCT. NO.    CATEGORY CODE    DWG. NO.    SIZE    REV.

APR BY: D. OSHATZ    DATE:    25B603    13/100    SHEET 1 OF 3    25B6154    1



SCALE 7/100



2	25B615	1	WATER SYSTEM ASSEMBLY SKELETON	-
1	-	13	QUAD PLUMBING ASSY	-
ITEM	PART NO	REQD	DESCRIPTION	MATERIAL

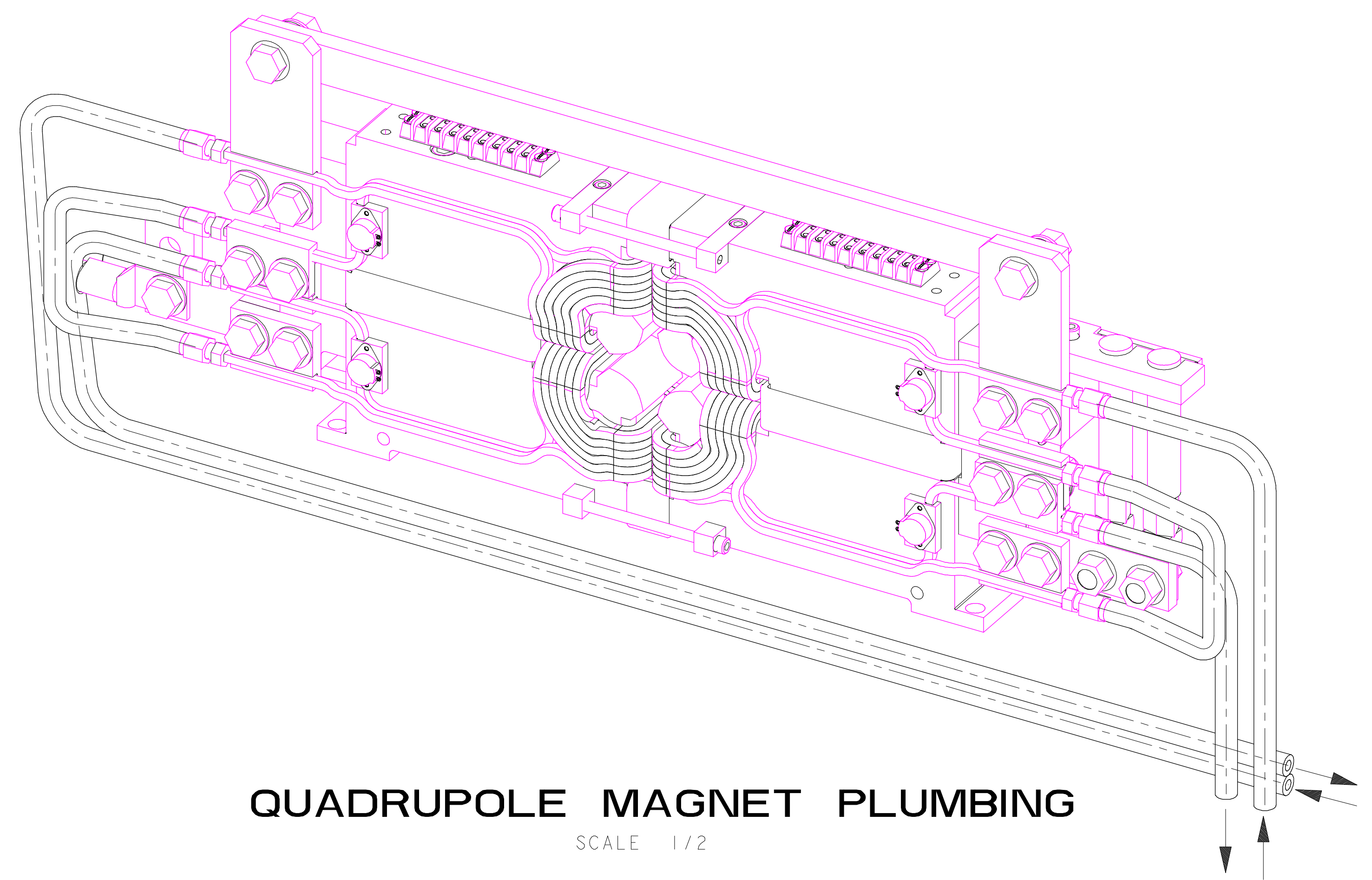
  

UNLESS OTHERWISE SPECIFIED		SHOP ORDERS		SER. NO.	-
PROJECTION:		ACCT. NO.	NO.	DATE	-
TOLERANCES		DEL. TO	REQD.	DATE	-
X.X ± 0.1	FRAC. ± 1/64	SURFACE TREATMT			
X.XX ± 0.03	Angles ± 1.0°	IDENT. METHOD			TAG
X.XXX ± 0.010	FINISH 125/	PROJECT NUMBER			na
DO NOT SCALE PRINT		PROJECT NAME			N/A
THREADS ARE CLASS 2		DWG. BY			D. OSHATZ
CHAMFER ENDS OF ALL SCREW TRENDS 30°		DATE			18-May-01
CUT ROUND, 1.5 THREAD RELIEF ON MACHINED THREADS		CHK. BY			-
BREAK EDGES .016 MAX. ON MACHINED WORK		DATE			
REMOVE BURRS, WELD SPLATTER & LOOSE SCALE		APR. BY			D. OSHATZ
IN ACCORDANCE WITH ASME Y14.5M & B46.1		DATE			

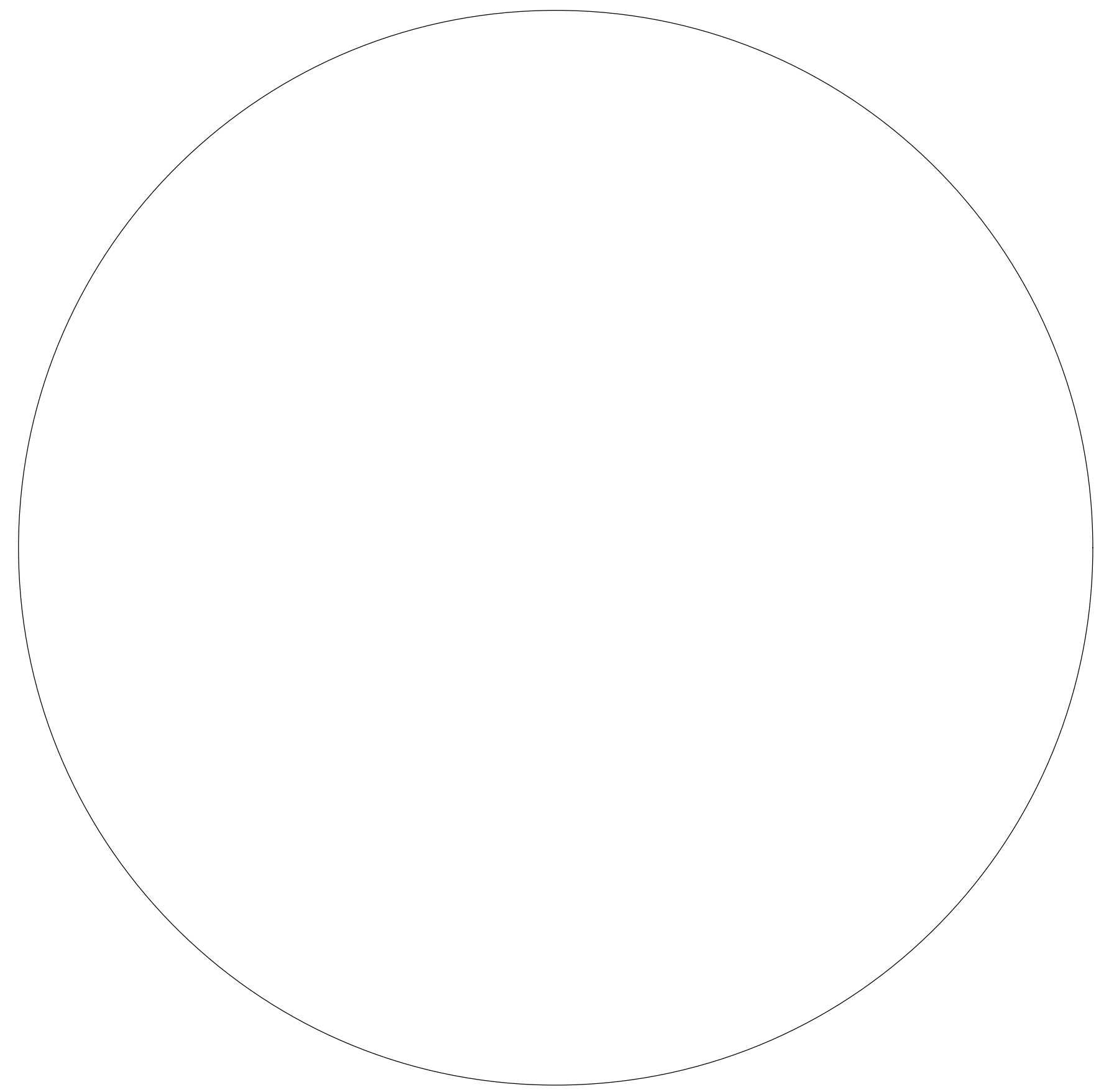
  

ERNEST ORLANDO LAWRENCE		UNIVERSITY OF CALIFORNIA - BERKELEY	
SNS - FES MBT		MECHANICAL SUBSYSTEMS	
WATER SYSTEM ASSEMBLY		MICROFILMED:	
DWG. TYPE	ASSEM	SHOWN ON	25B603
PATENT CLEAR:	-	SCALE:	1/10
DESIGN ACCT. NO.	-	CATEGORY CODE	FE3313
DWG. NO.	25B6154	SIZE	DO NOT SCALE PRINTS
REV.		SHEET 2 OF 3	

REV	DWG	CHK	ZONE	DATE	CHANGES



**QUADRUPOLE MAGNET PLUMBING**  
SCALE 1/2



**REBUNCHER CAVITY PLUMBING**

2	25B615	1	WATER SYSTEM ASSEMBLY SKELETON	-
1	-	13	QUAD PLUMBING ASSY	-
ITEM	PART NO	REOD	DESCRIPTION	MATERIAL

UNLESS OTHERWISE SPECIFIED					
PROJECTION:					
TOLERANCES	X.X ± 0.1	FRAC. ± 1/64			
	X.XX ± 0.03	Angles ± 1.0°			
	X.XXX ± 0.010	FINISH 125/			
DO NOT SCALE PRINT					
THREADS ARE CLASS 2					
CHAMFER ENDS OF ALL SCREW THREADS 30°					
CUT ROUND, 1.5 THREAD RELIEF ON MACHINED THREADS					
BREAK EDGES .016 MAX. ON MACHINED WORK					
REMOVE BURRS, WELD SPLATTER & LOOSE SCALE					
IN ACCORDANCE WITH ASME Y14.5M & B46.1					
REV	DWG	CHK	ZONE	DATE	CHANGES

**ERNEST ORLANDO LAWRENCE**  
**BERKELEY NATIONAL LABORATORY**  
UNIVERSITY OF CALIFORNIA - BERKELEY

SNS - FES MBT  
MECHANICAL SUBSYSTEMS  
WATER SYSTEM ASSEMBLY

MICROFILMED: 

DWG. TYPE	ASSEM	SHOWN ON	25B603	SCALE: 1/10	DO NOT SCALE PRINTS
PATENT CLEAR:	DESIGN ACCT. NO.	CATEGORY CODE	FE3313	DWG. NO.	25B6154
				SIZE	1

DATE 04-04-01

DWG BY D. OSHATZ  
CHK BY -  
APR BY D. OSHATZ