



MEBT MEETING AGENDA

October 11, 2001

Mechanical Systems Update

1. **Assembly Status**
 - Raft 3 Assembly ([photo](#))
 - QM12 repair
 - Fiducialization ([results](#))
 - BPM Adapter Flanges ([section](#))
 - Rafts 1 & 2 ([photo](#))
2. **Design Status ([MEBT](#))**
 - Raft assembly drawings
 - Water system ([schematic](#))
 - Quad power lead routing
 - Quad Electrical Covers

Electrical Systems Update

1. **Low Level RF**
2. **Rebuncher System**
3. **Beam Diagnostics**

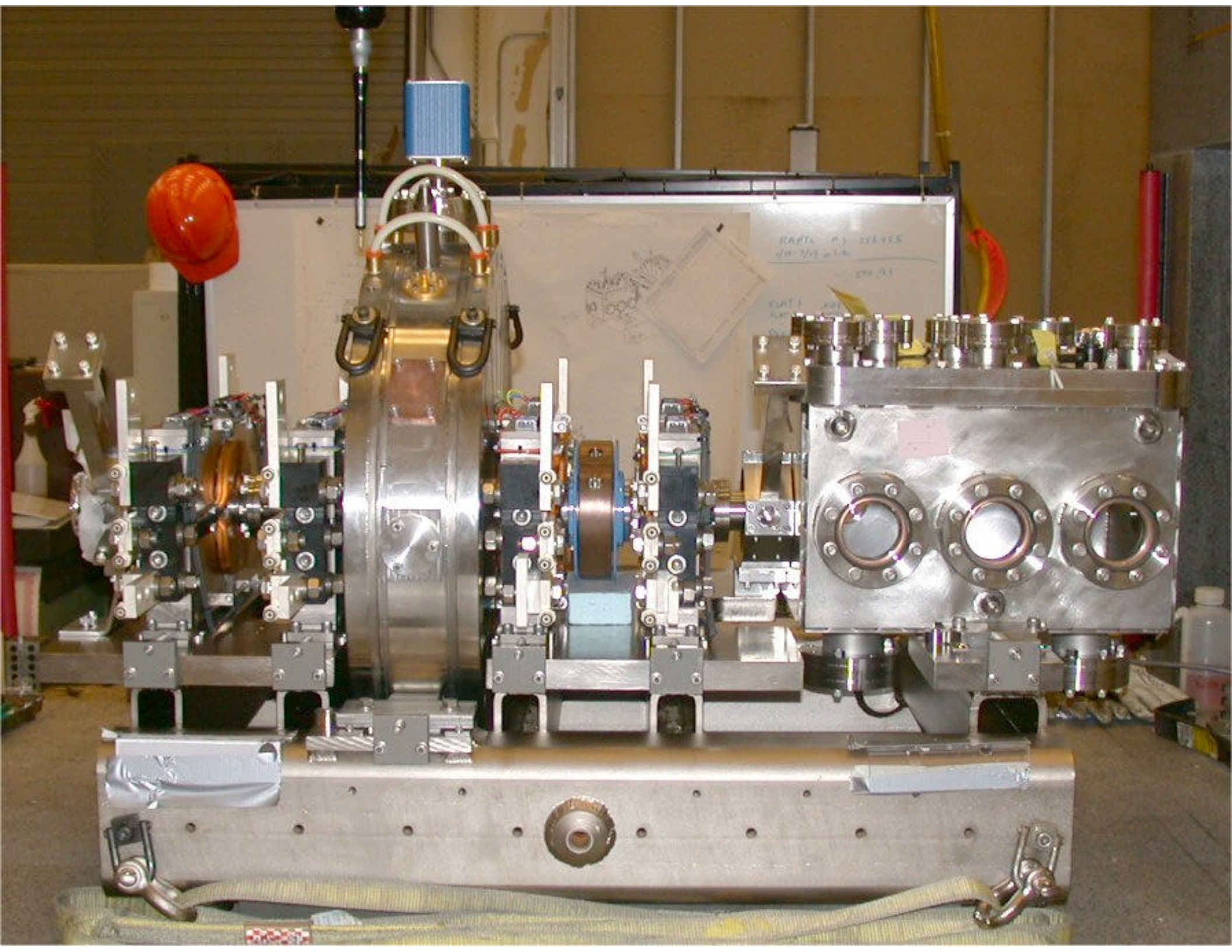
System Integration / Installation

1. **Installation of MEBT frame**

Upcoming Tasks and Milestones

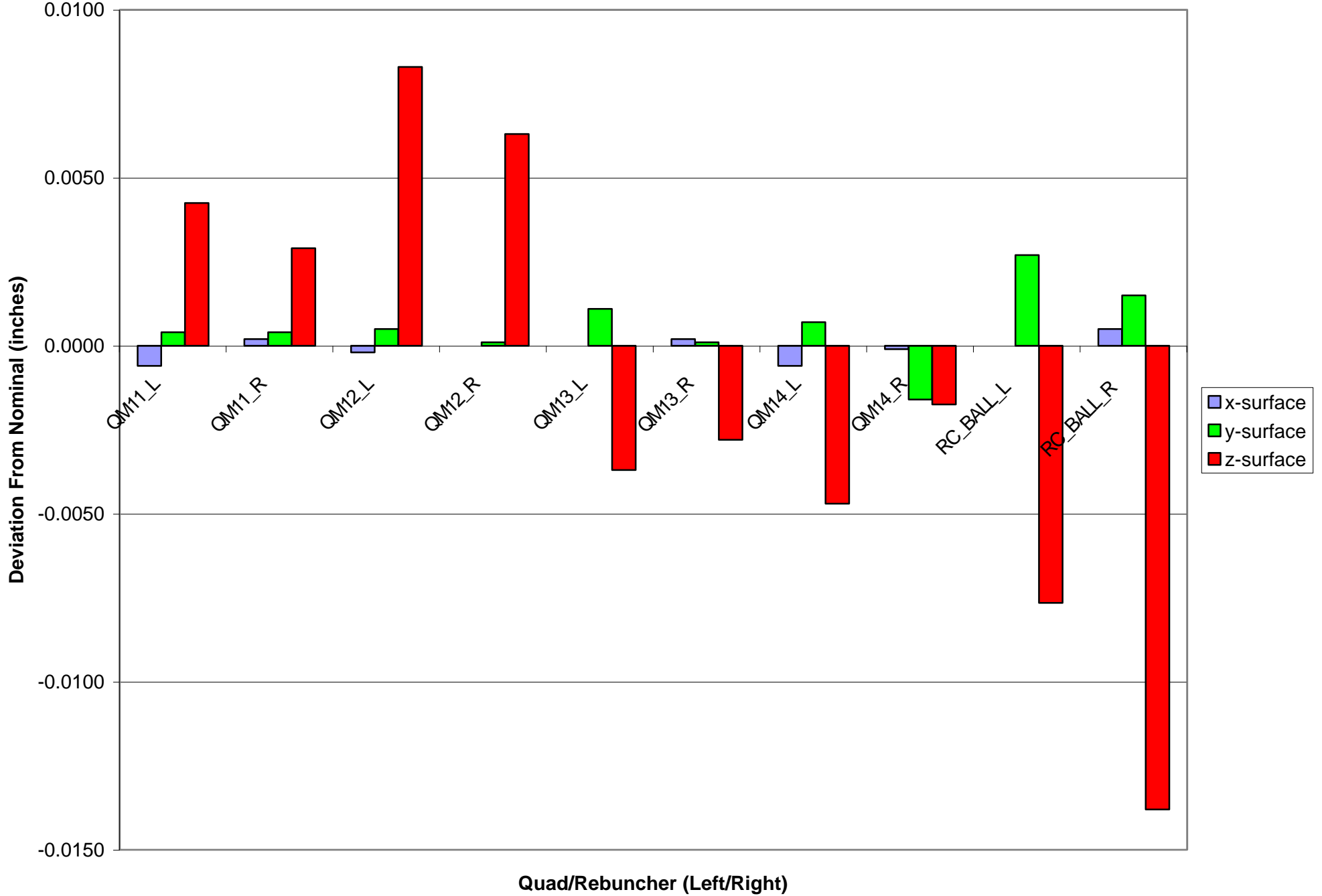
- | | | |
|---|--------------------------------|---------|
| ◆ | Rebuncher Cavity #2-4 Received | 6/30/01 |
| ◆ | Profile Monitor all complete | 7/31/01 |
| ◆ | MEBT Raft 3 assembly complete | 9/30/01 |

Next Meeting: Thursday, 10/25/01, 10 AM



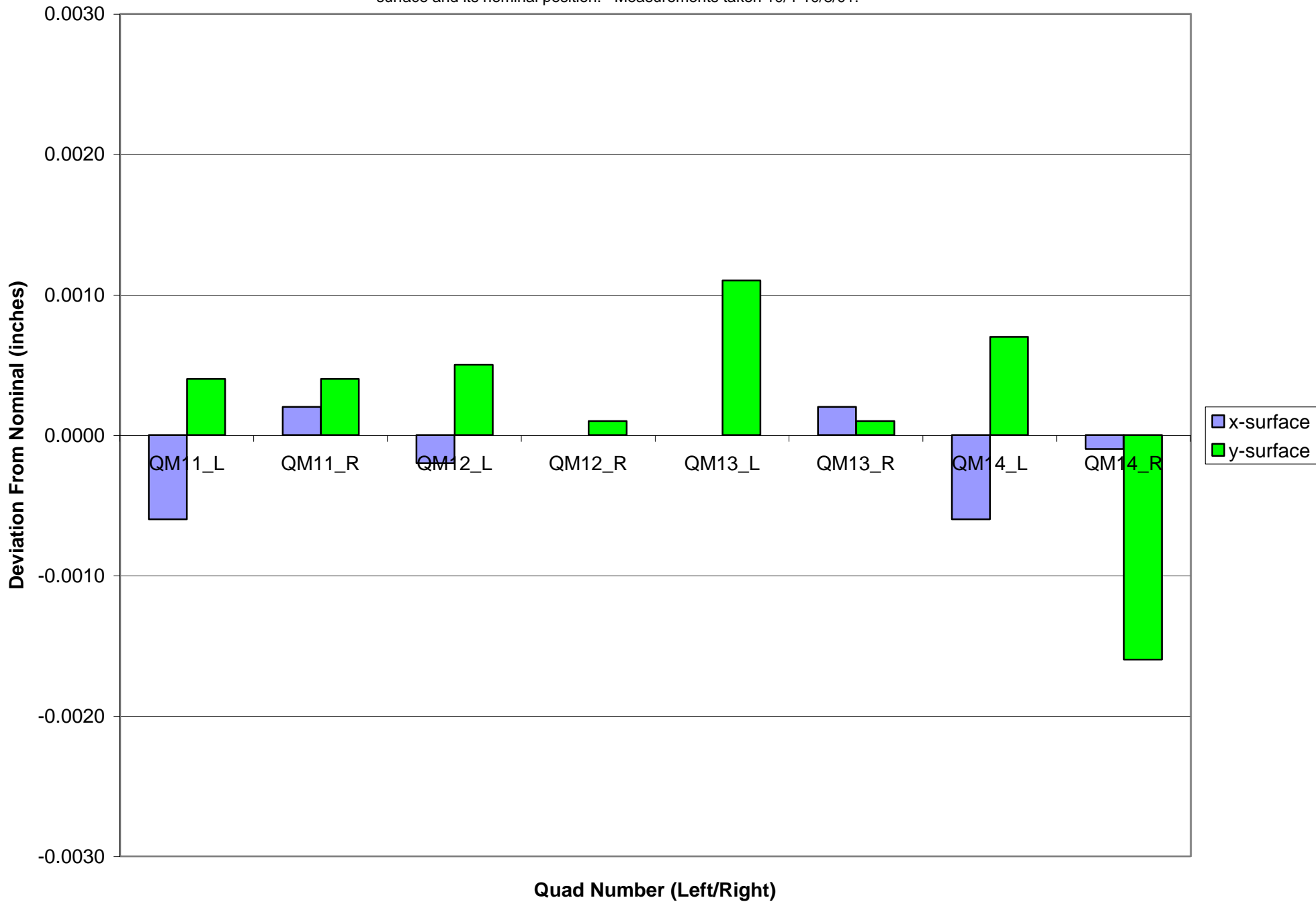
Raft 3 Quad/Rebuncher Locational Deviations

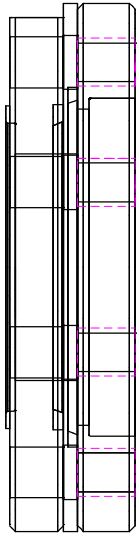
Deviation values: the difference between the measured position of each fiducial surface and its nominal position. Measurements taken 10/4-10/8/01.



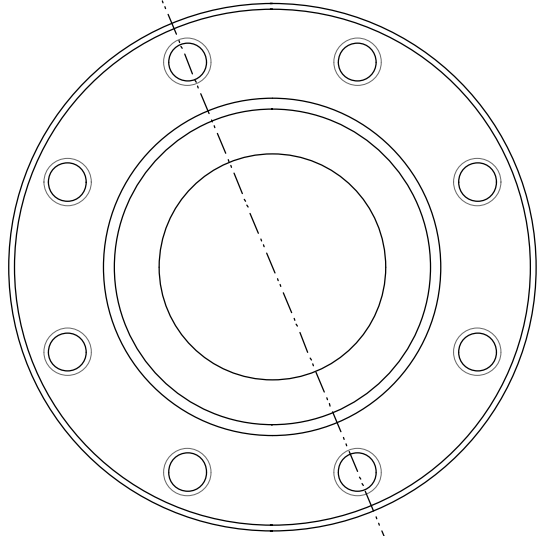
Raft 3 Quad Locational Deviations (x&y)

Deviation values: the difference between the measured position of each fiducial surface and its nominal position. Measurements taken 10/4-10/8/01.

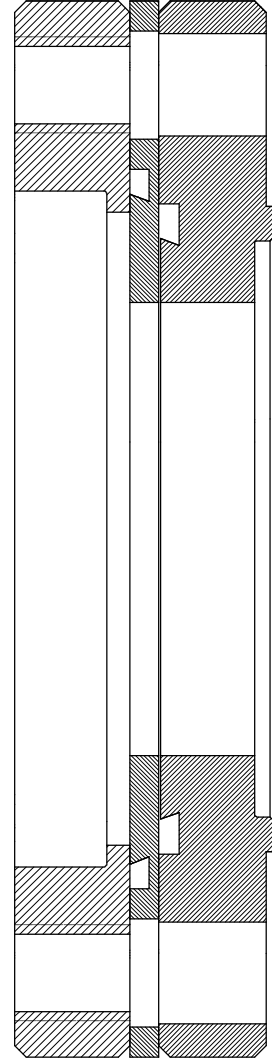




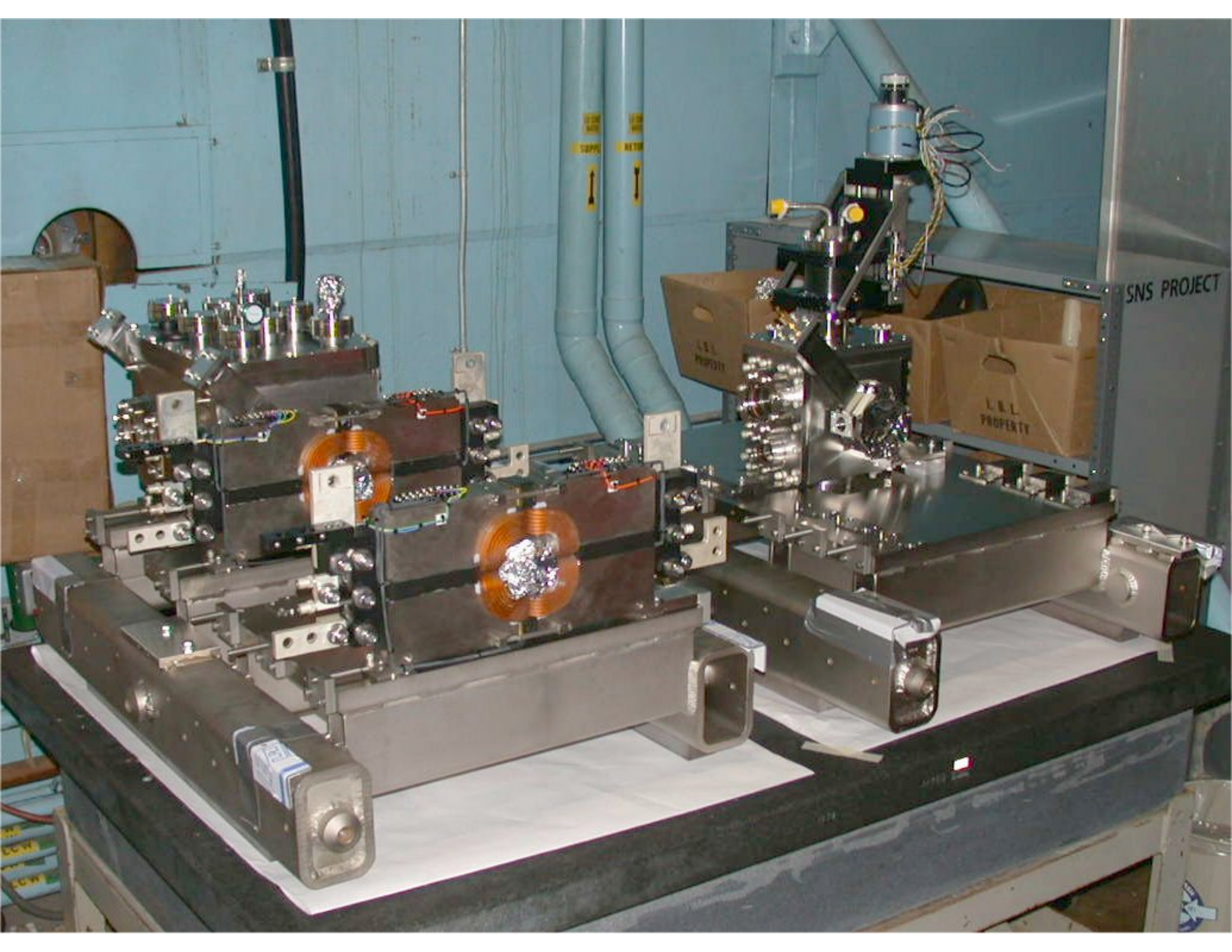
A

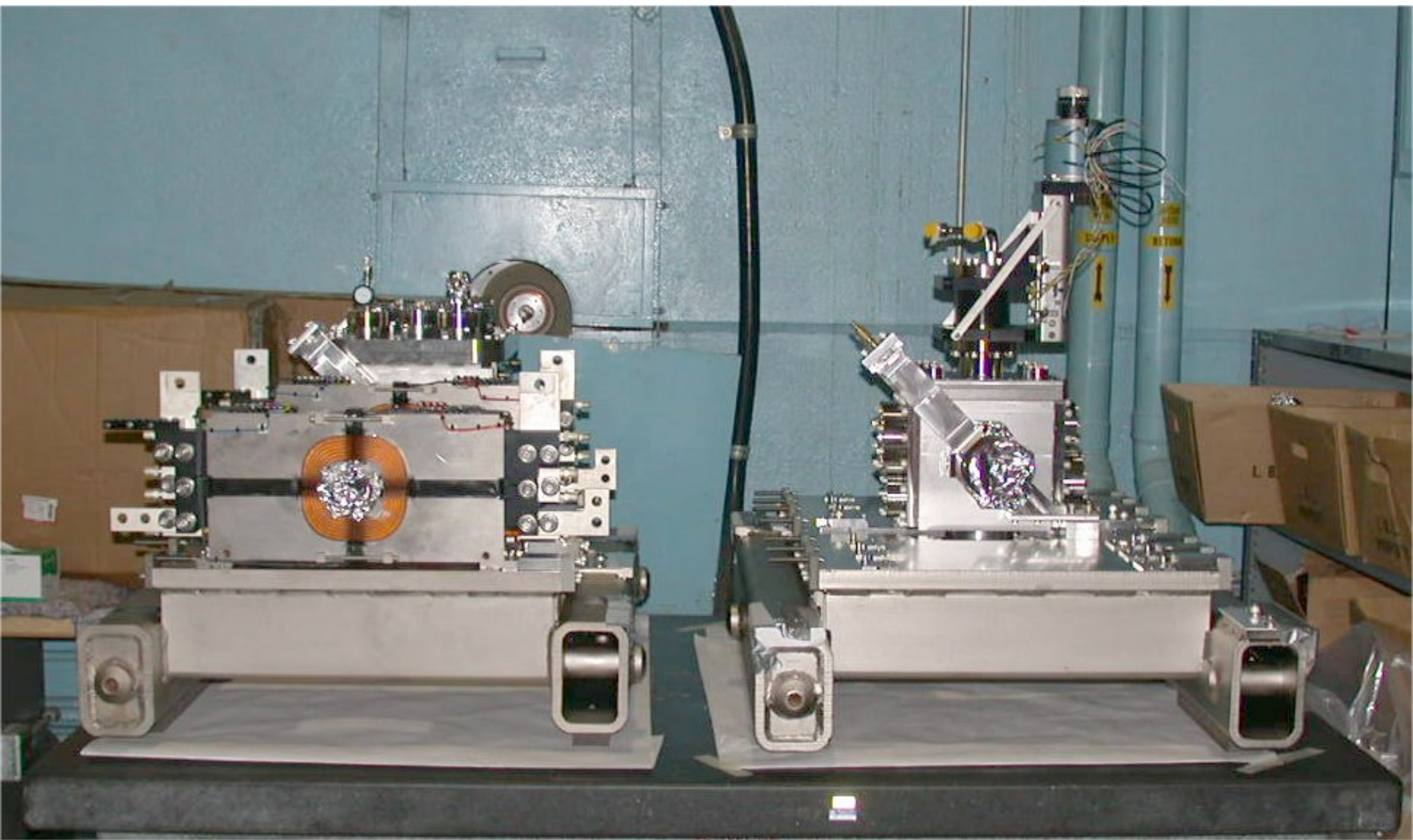


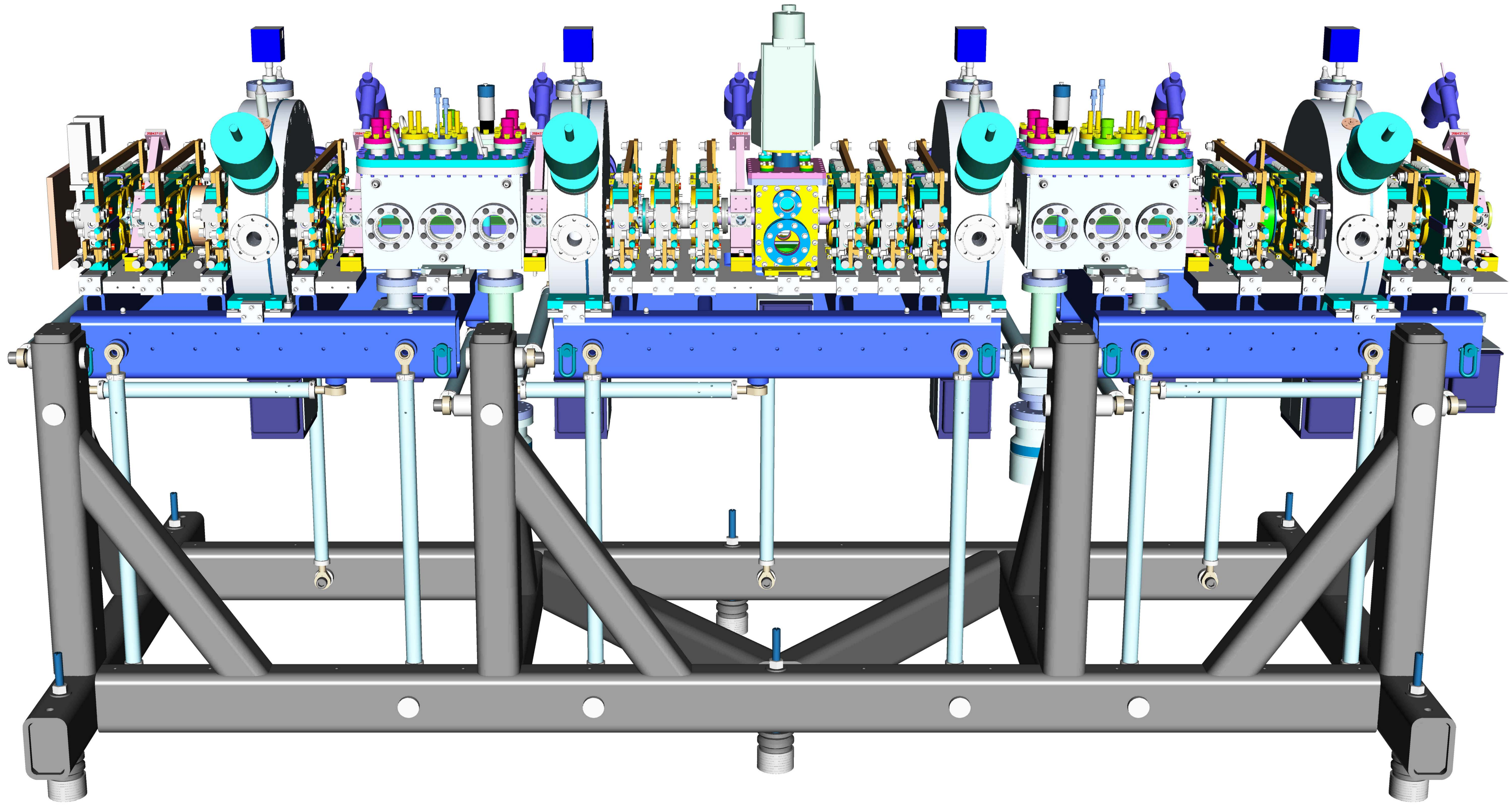
A

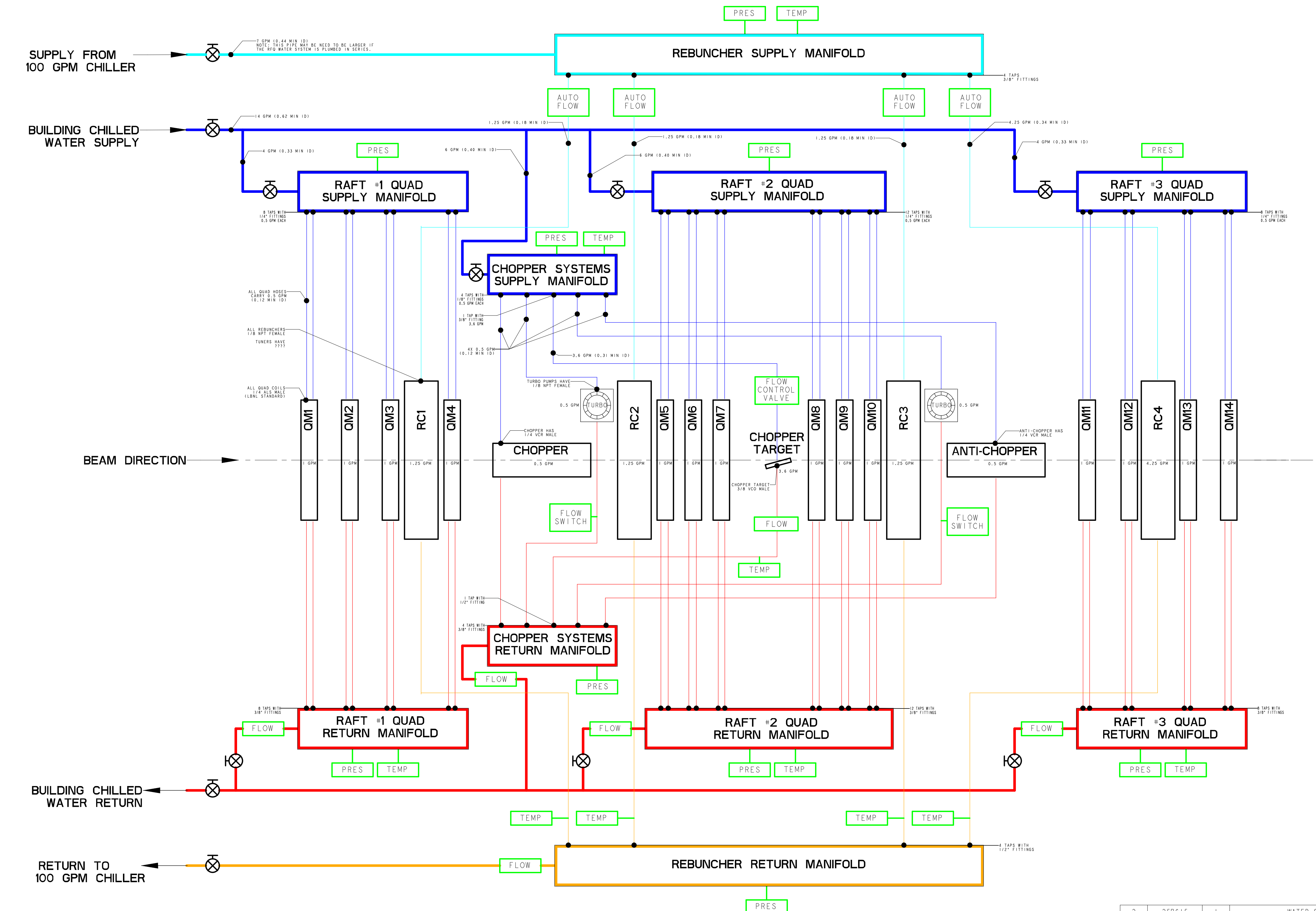


SECTION A - A
SCALE 2/1









BEAM DIRECTION →

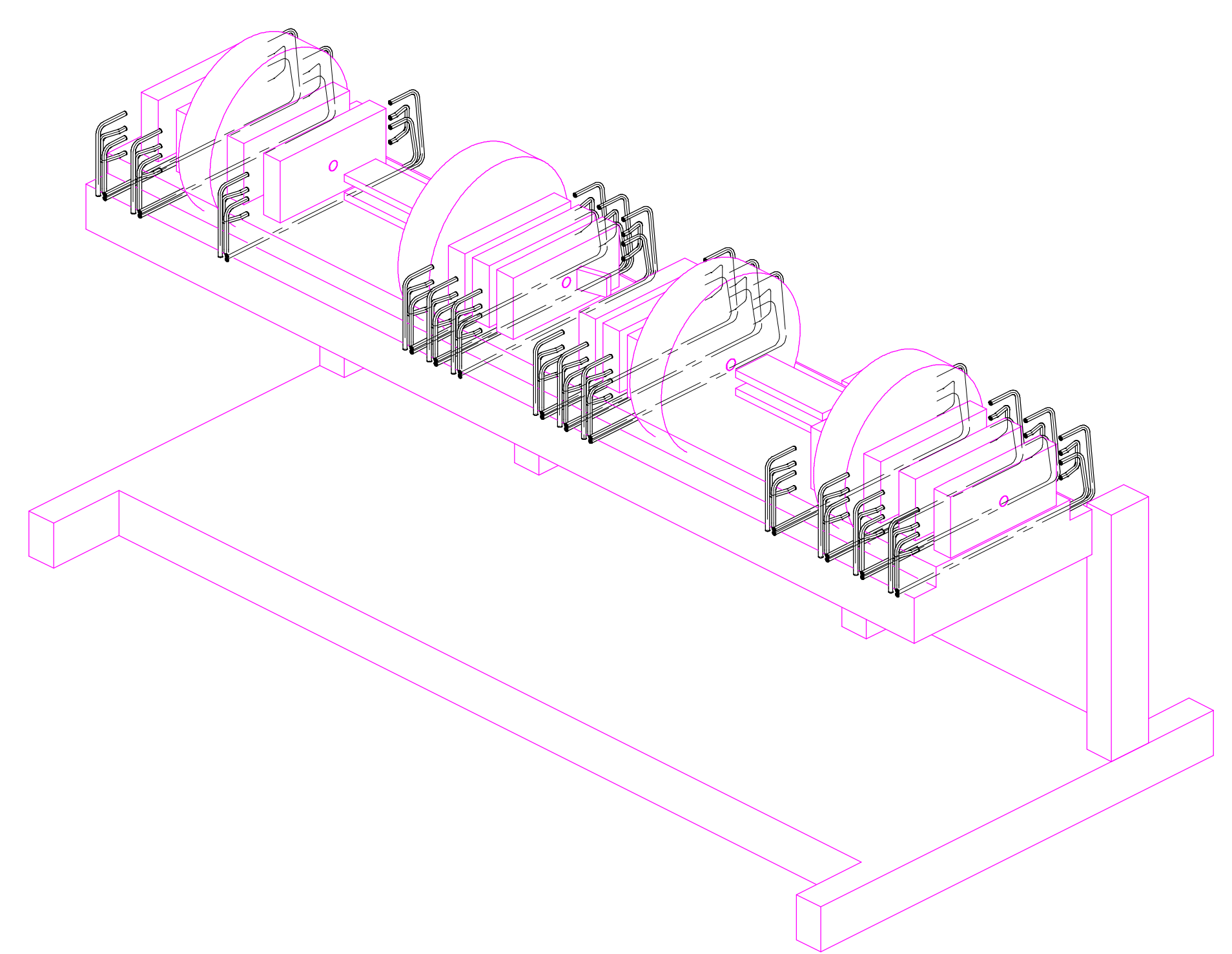
- 100 GPM CHILLER SUPPLY
- 100 GPM CHILLER RETURN
- CHILLED WATER SUPPLY
- CHILLED WATER RETURN
- TEMP THERMOCOUPLE
- PRES PRESSURE TRANSDUCER
- FLOW FLOW METER
- MANUAL VALVE

REV	DWG	CHK	ZONE	DATE	CHANGES

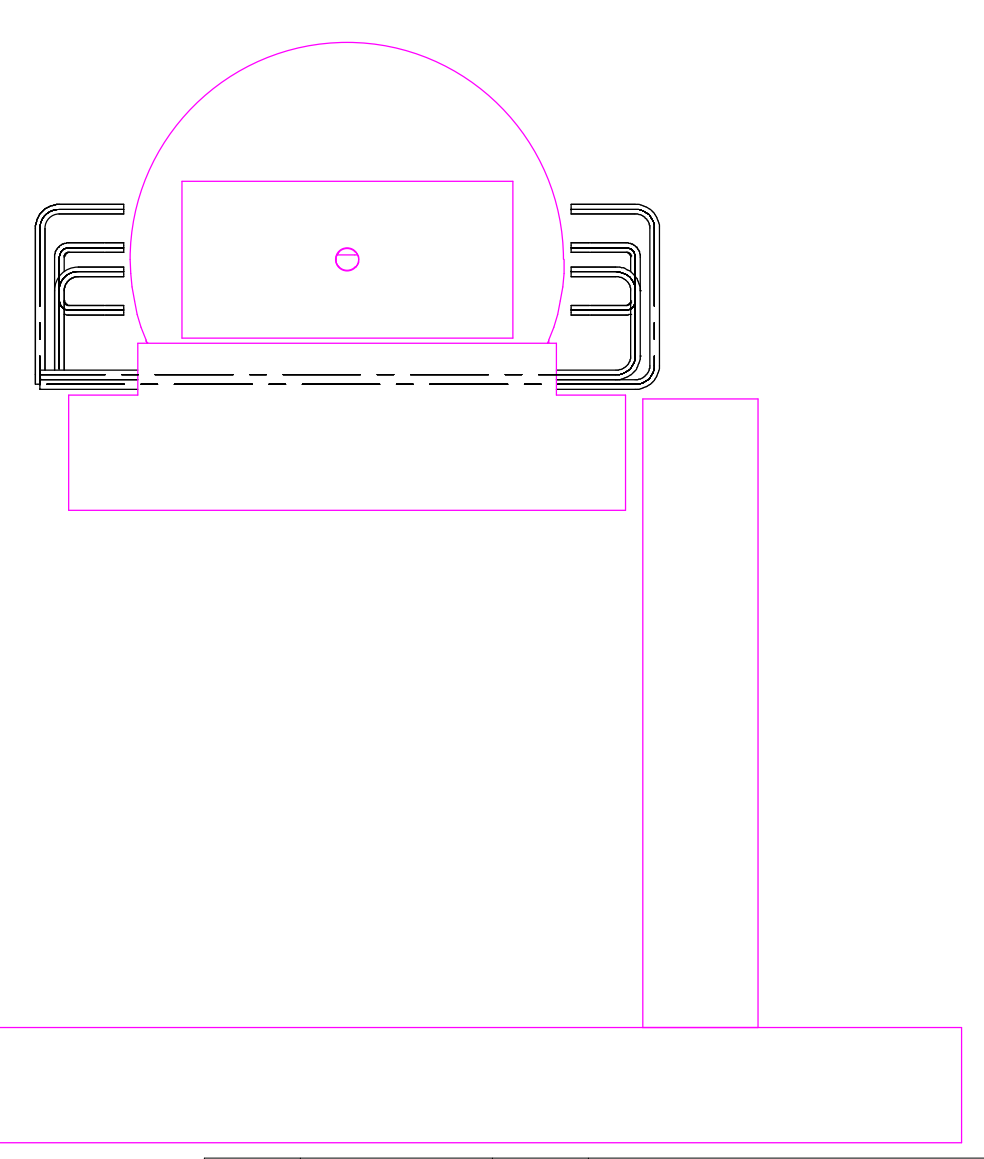
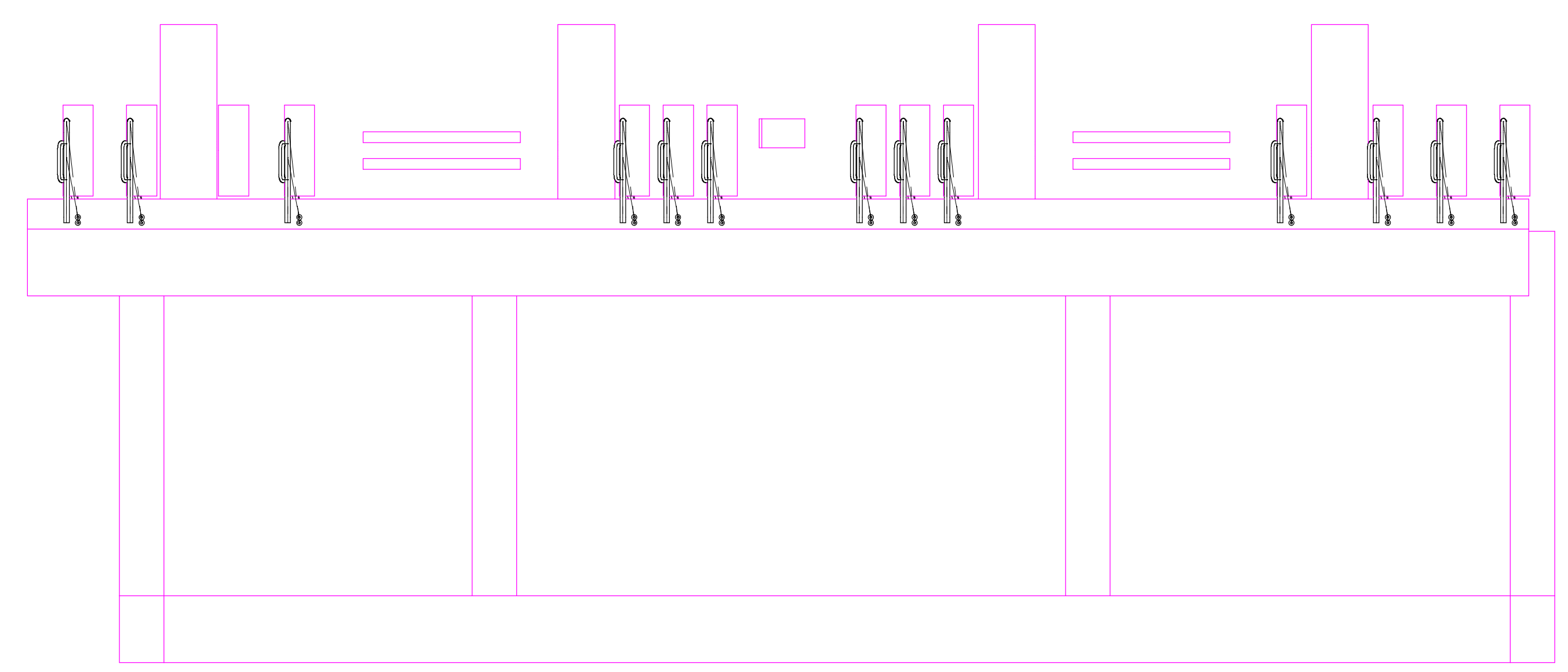
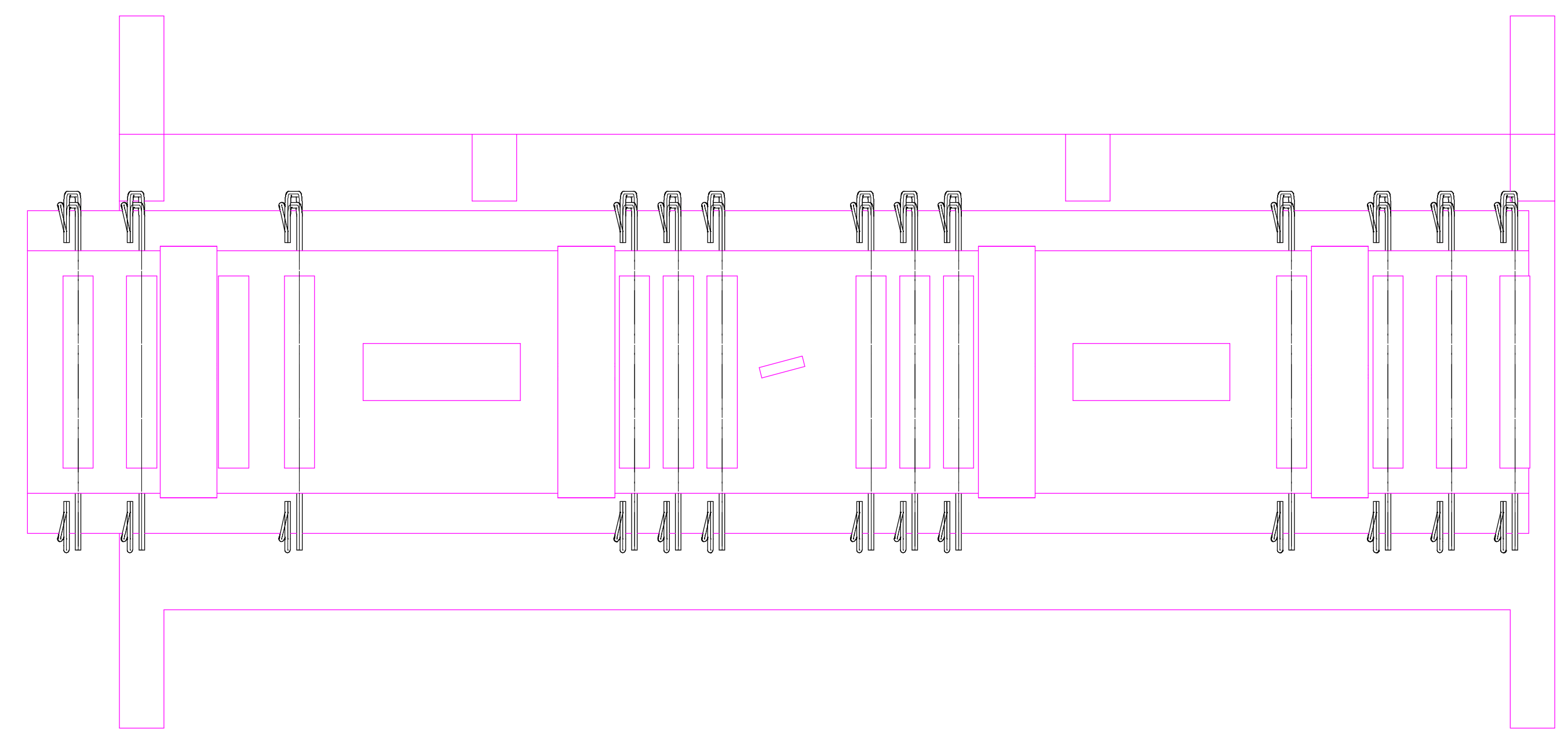
UNLESS OTHERWISE SPECIFIED
 PROJECTION:
 TOLERANCES:
 X.X ± 0.1 FRAC. ± 1/64
 X.XX ± 0.03 Angles ± 1.0°
 X.XXX ± 0.010 FINISH 125/
 DO NOT SCALE PRINT
 THREADS ARE CLASS 2
 CHAMFER ENDS OF ALL SCREW TRENDS 30°
 CUT ROUND, 1.5 THREAD RELIEF ON MACHINED THREADS
 BREAK EDGES .016 MAX. ON MACHINED WORK
 REMOVE BURRS, WELD SPATTER & LOOSE SCALE
 IN ACCORDANCE WITH ASME Y14.5M & B46.1

SHOP ORDERS		SER. NO.	DATE
ACCT. NO.	NO. REQD.		
DEL. TO			
SURFACE TREATMENT			
IDENT. METHOD	TAG		
PROJECT NUMBER			
PROJECT NAME	N/A		
DWG. BY	D. OSHATZ	DATE	22-May-01
CHK. BY		DATE	
APR. BY	D. OSHATZ	DATE	

2	25B615	1	WATER SYSTEM ASSEMBLY SKELETON	-
1	-	13	QUAD PLUMBING ASSY	-
ITEM	PART NO.	RECD.	DESCRIPTION	MATERIAL
ERNEST ORLANDO LAWRENCE BERKELEY NATIONAL LABORATORY UNIVERSITY OF CALIFORNIA - BERKELEY				
			SNS - FES MBT MECHANICAL SUBSYSTEMS WATER SYSTEM ASSEMBLY	
DWG. TYPE: ASSEM		SHOWN ON: 25B603	SCALE: 13/100	DO NOT SCALE PRINTS
PATENT CLEAR: -		DESIGN ACCT. NO. FE3313	SHEET 1 OF 3 DWG. NO. 25B6154 1	



SCALE 7/100



2	25B615	1	WATER SYSTEM ASSEMBLY SKELETON	-
1	-	13	QUAD PLUMBING ASSY	-
ITEM	PART NO	REQD	DESCRIPTION	MATERIAL

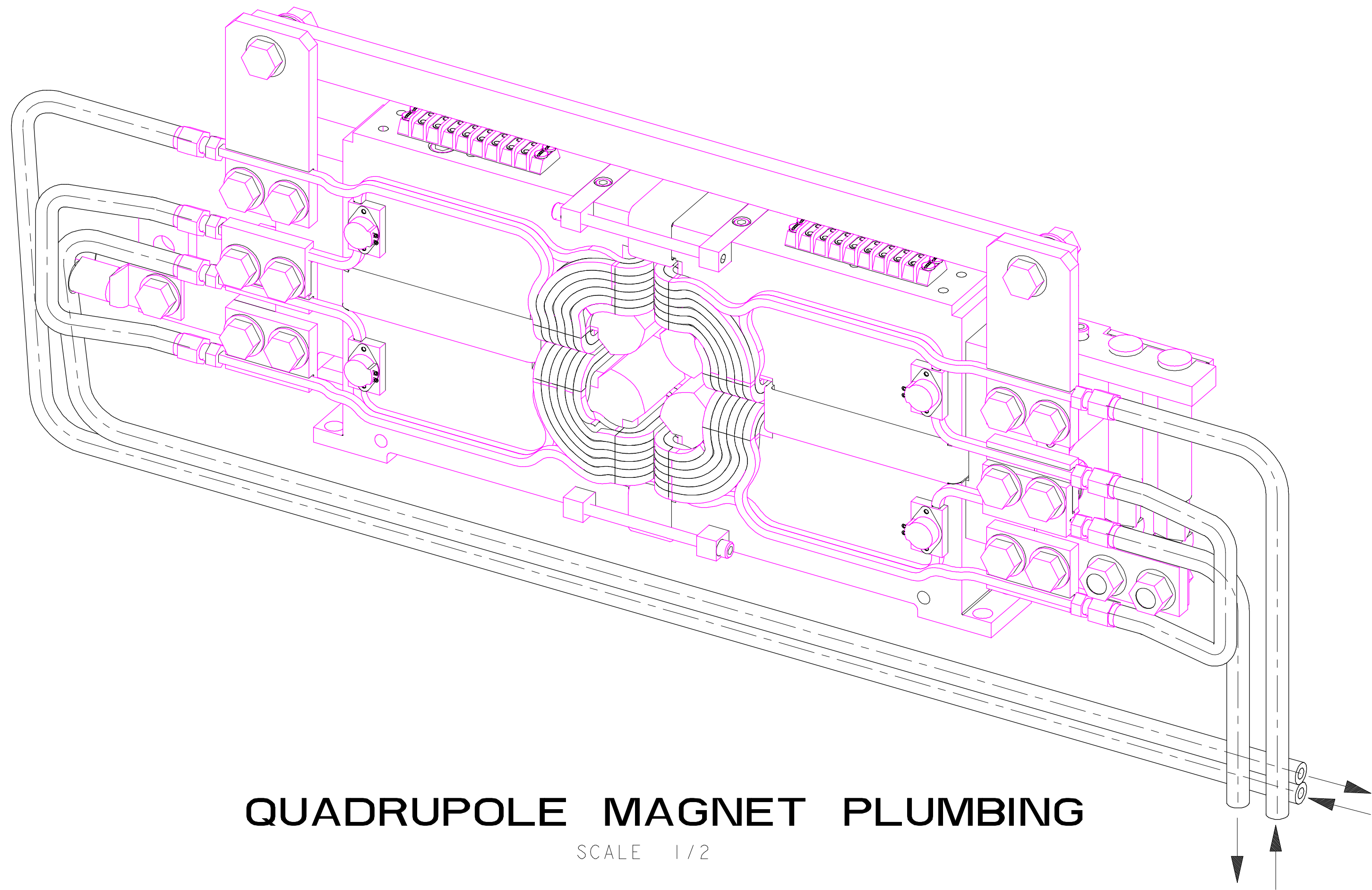
UNLESS OTHERWISE SPECIFIED		SHOP ORDERS		SER. NO.	-
PROJECTION:		ACCT. NO.	NO.	DATE	-
TOLERANCES		DEL. TO	REQD.	DATE	-
X.X ± 0.1	FRAC. ± 1/64	SURFACE TREATMT			
X.XX ± 0.03	Angles ± 1.0°	IDENT. METHOD		TAG	
X.XXX ± 0.010	FINISH 125/	PROJECT NUMBER		na	
DO NOT SCALE PRINT		PROJECT NAME		N/A	
THREADS ARE CLASS 2		DWG. BY		D. OSHATZ	
CHAMFER ENDS OF ALL SCREW TRENDS 30°		DATE		18-May-01	
CUT ROUN. 1.5 THREAD RELIEF ON MACHINED THREADS		CHK. BY		-	
BREAK EDGES .016 MAX. ON MACHINED WORK		DATE			
REMOVE BURRS, WELD SPLATTER & LOOSE SCALE		APR. BY		D. OSHATZ	
IN ACCORDANCE WITH ASME Y14.5M & B46.1		DATE			

ERNEST ORLANDO LAWRENCE		UNIVERSITY OF CALIFORNIA - BERKELEY	
SNS - FES MBT		MECHANICAL SUBSYSTEMS	
WATER SYSTEM ASSEMBLY		DO NOT SCALE PRINTS	
MICROFILMED:	DWG. TYPE	SHOWN ON	SCALE: 1/10
	ASSEM	25B603	SHEET 2 OF 3
PATENT CLEAR:	DESIGN ACCT. NO.	CATEGORY CODE	DWG. NO. 25B6154
	-	FE3313	SIZE REV.

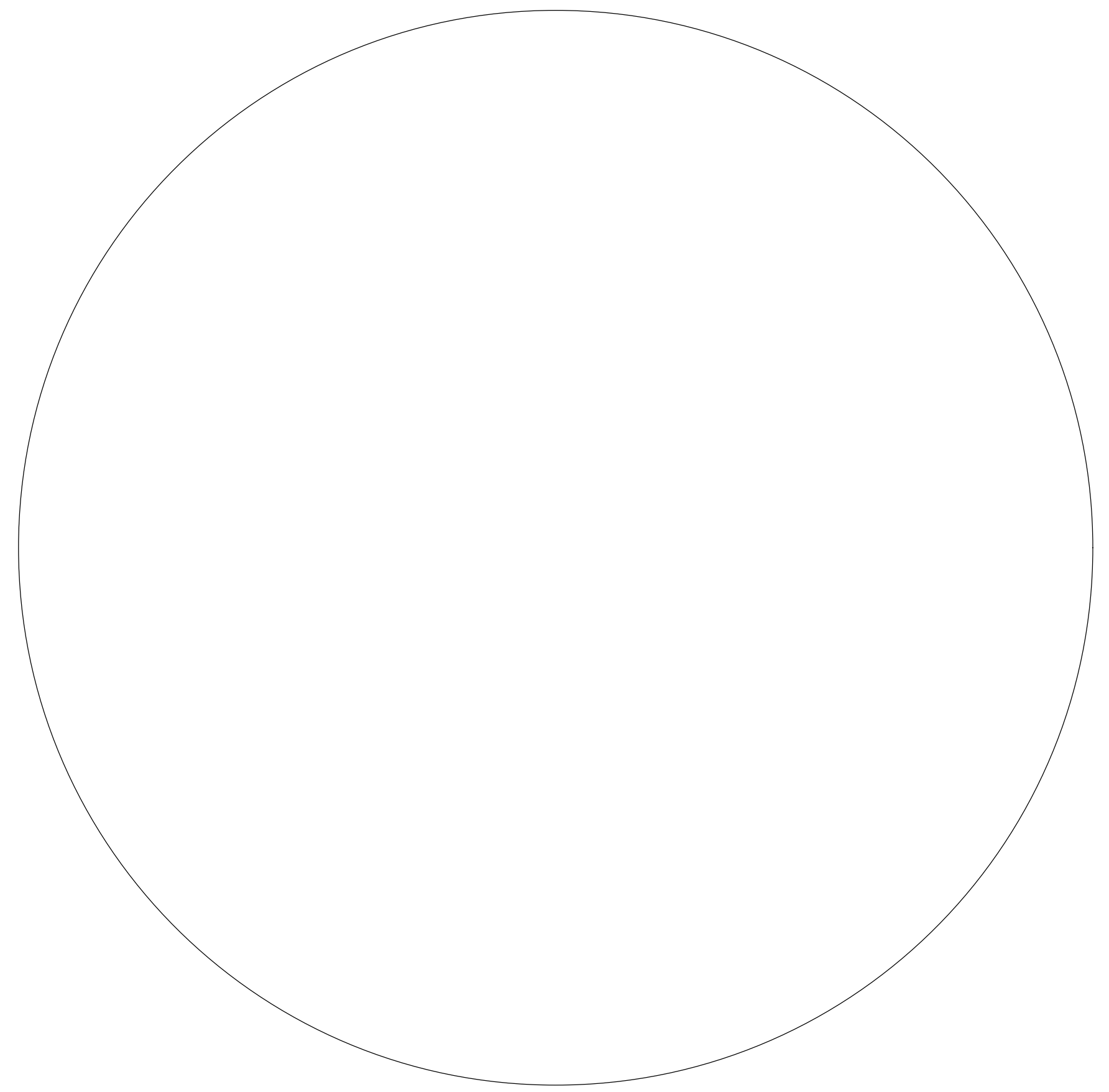
REV	DWG	CHK	ZONE	DATE	CHANGES

8 7 6 5 4 3 2 1

8 7 6 5 4 3 2 1



QUADRUPOLE MAGNET PLUMBING
SCALE 1/2



REBUNCHER CAVITY PLUMBING

2	25B615	1	WATER SYSTEM ASSEMBLY SKELETON	-
1	-	13	QUAD PLUMBING ASSY	-
ITEM	PART NO	REOD	DESCRIPTION	MATERIAL

UNLESS OTHERWISE SPECIFIED					
PROJECTION:					
TOLERANCES	X.X ± 0.1	FRAC. ± 1/64			
	X.XX ± 0.03	Angles ± 1.0°			
	X.XXX ± 0.010	FINISH 125/			
DO NOT SCALE PRINT					
THREADS ARE CLASS 2					
CHAMFER ENDS OF ALL SCREW TRENDS 30°					
CUT ROUND, 1.5 THREAD RELIEF ON MACHINED THREADS					
BREAK EDGES .016 MAX. ON MACHINED WORK					
REMOVE BURRS, WELD SPLATTER & LOOSE SCALE					
IN ACCORDANCE WITH ASME Y14.5M & B46.1					
REV	DWG	CHK	ZONE	DATE	CHANGES

ERNEST ORLANDO LAWRENCE
BERKELEY NATIONAL LABORATORY
UNIVERSITY OF CALIFORNIA - BERKELEY

SNS - FES MBT
MECHANICAL SUBSYSTEMS
WATER SYSTEM ASSEMBLY

MICROFILMED:

DWG. TYPE: ASSEM

SHOWN ON: 25B603

SCALE: 1/10

PATENT CLEAR:

DESIGN ACCT. NO.:

CATEGORY CODE: FE3313

DWG. NO.: 25B6154

SIZE: 1

REV.:

DO NOT SCALE PRINTS

SHEET 3 OF 3