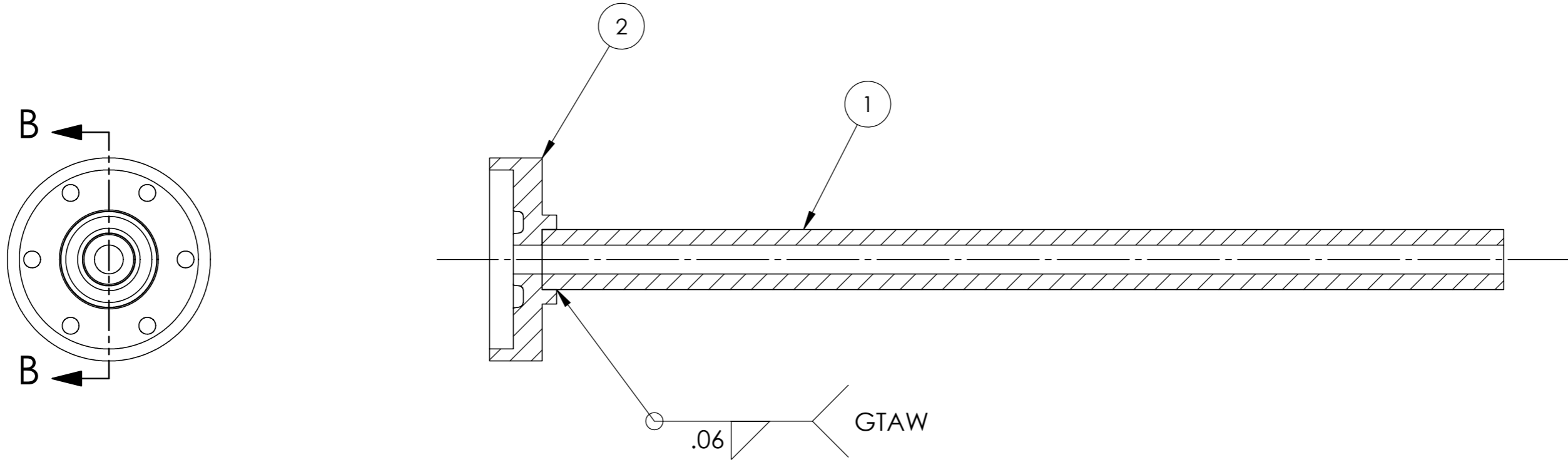


NOTES:
 1) VACUUM TIGHT TO 10E-6 TORR.
 2) CLEANING, WELDING AND VACUUM PROCEDURES
 PER LBNL ENGINEERING NOTE M8184.



SECTION B-B

ITEM	QTY	PART NO.	DESCRIPTION
2	1	27A338	FLANGE, VIEW PORT, CATHODE
1	1	27A337	TUBE, VIEW PORT, CATHODE

					UNLESS OTHERWISE SPECIFIED		PROJECT NAME:		ERNEST ORLANDO LAWRENCE		
					.X ±.1_INCH .XX ±.01_INCH .XXX ±.005_INCH		PROJECT NUMBER:		BERKELEY NATIONAL LABORATORY		
					FRACTIONS: -/--		NEXT ASSY: 27A330		UNIVERSITY OF CALIFORNIA		
					ANGLES: 0.1° / INCH		CALC. WT. KG. 0.06 LB.		HYBRID ION SOURCE (HYBRIS)		
					MACH. SURFS.: 125 MICRO-INCH ✓ OR BETTER		DO NOT SCALE PRINT		WELDMENT, CATHODE FLANGE		
					DO NOT SCALE DRAWING. INTERPRET PER ASME Y14.5M-1994. THREADS ARE CLASS 2. BREAK MACHINED EDGES .016 MAX. REMOVE BURRS, WELD SPLATTER & LOOSE SCALE.		SCALE: 2:1		WELDMENT, VIEW PORT		
							CATEGORY CODE:		SHEET 1 OF 1		
							THIRD ANGLE PROJECTION		SIZE: B DWG NO: 27A360		
									REV A		

