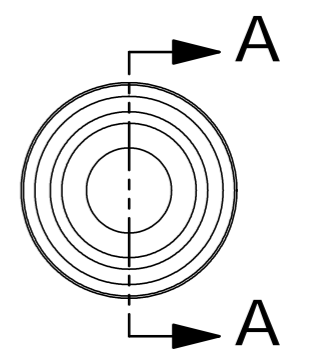


### SECTION A-A



$\phi$	.56	A	B
$\phi$	.02	A	B

$\phi$	.350 <sup>+.005</sup> <sub>-.000</sub>	A	B
$\phi$	.010	A	B

A/R	VESPEL, SP1		
REQD	ITEM	PART NO.	DESCRIPTION

UNLESS OTHERWISE SPECIFIED			
TOLERANCES	X ±.1_INCH .XX ±.01_INCH .XXX ±.005_INCH		
FRACTIONS:	-/-		
ANGLES:	0.1° / INCH		
MACH. SURFS.:	125 MICRO-INCH <input checked="" type="checkbox"/> OR BETTER		
DO NOT SCALE DRAWING. INTERPRET PER ASME Y14.5M-1994. THREADS ARE CLASS 2. BREAK MACHINED EDGES .016 MAX. REMOVE BURRS, WELD SPLATTER & LOOSE SCALE.			
PROJECT NAME:	ERNEST ORLANDO LAWRENCE BERKELEY NATIONAL LABORATORY		
PROJECT NUMBER:	27A328		
NEXT ASSY:	27A328		
CALC. WT.	KG.	0.004 LB.	
SCALE:	2:1		
THIRD ANGLE PROJECTION			

ERNEST ORLANDO LAWRENCE BERKELEY NATIONAL LABORATORY				
UNIVERSITY OF CALIFORNIA				
HYBRID ION SOURCE (HYBRIS)				
BUSHING, EXTRACTOR / OUTLET				
SHEET 1 OF 1	SIZE: B	DWG NO: 27A356	REV A	

REV	DRAWN BY	APPVD.	DATE	DESCRIPTION
A	PAL	R. KELLER	11/24/03	INITIAL RELEASE