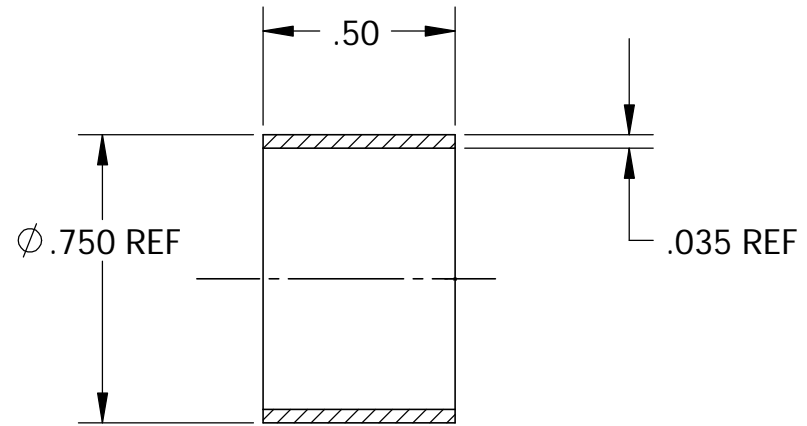
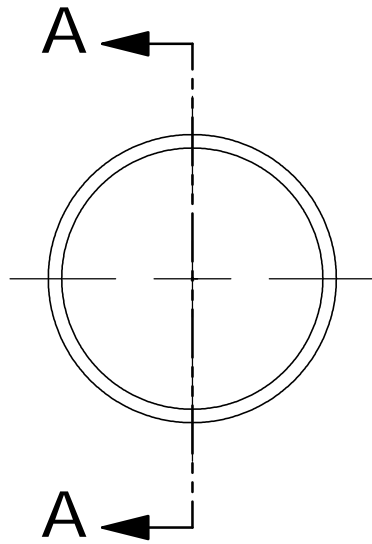


NOTES:

1) DO NOT BREAK EDGES.



SECTION A-A

A/R			TUBING, VACUUM, 3/4", SST, 304, MDC P/N 480003 OR EQL
REQD	ITEM	PART NO.	DESCRIPTION

PROJECT NAME:	
PROJECT NUMBER:	
NEXT ASSY:	27A343
CALC. WT.	KG. 0.01 LB.

ERNEST ORLANDO LAWRENCE
BERKELEY NATIONAL LABORATORY
UNIVERSITY OF CALIFORNIA



UNLESS OTHERWISE SPECIFIED =>	DO NOT SCALE PRINT	CATEGORY CODE:
.X ±.1_INCH .XX ±.01_INCH .XXX ±.005_INCH FRACTIONS: -/-- ANGLES: 0.1° / INCH MACH. SURFS. 125 MICRO-INCH ✓ OR BETTER	SCALE: 2:1	
THIRD ANGLE PROJECTION		

HYBRID ION SOURCE (HYBRIS)			
WELDMENT, EXTRACTOR			
TUBE, VACUUM, EXTRACTOR			
SHEET 1 OF 1	SIZE: A	DWG NO: 27A348	REV B

REV	DWN.	APPVD.	DATE	DESCRIPTION
B	PAL	R. KELLER	12/15/03	ADDED NOTE 1.
A	PAL	R. KELLER	11/24/03	INITIAL RELEASE

DO NOT SCALE DRAWING.
INTERPRET PER ASME Y14.5M-1994.
THREADS ARE CLASS 2.
BREAK MACHINED EDGES .016 MAX.
REMOVE BURRS, WELD SPLATTER &
LOOSE SCALE.

TOLERANCES

.X ±.1_INCH .XX ±.01_INCH .XXX ±.005_INCH
FRACTIONS: -/--
ANGLES: 0.1° / INCH
MACH. SURFS. 125 MICRO-INCH ✓ OR BETTER