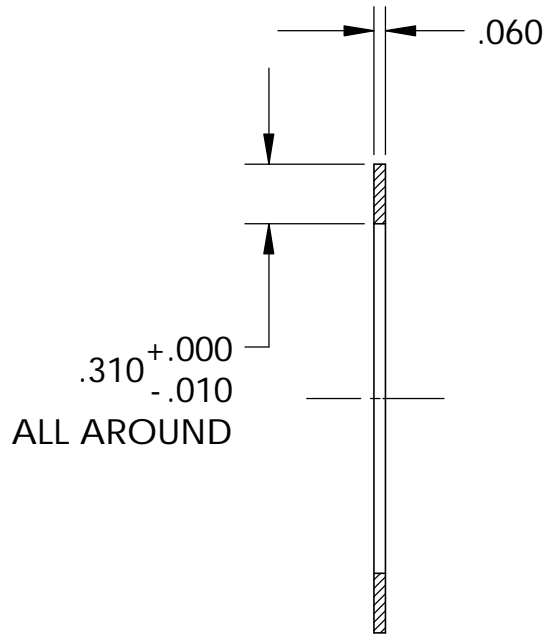
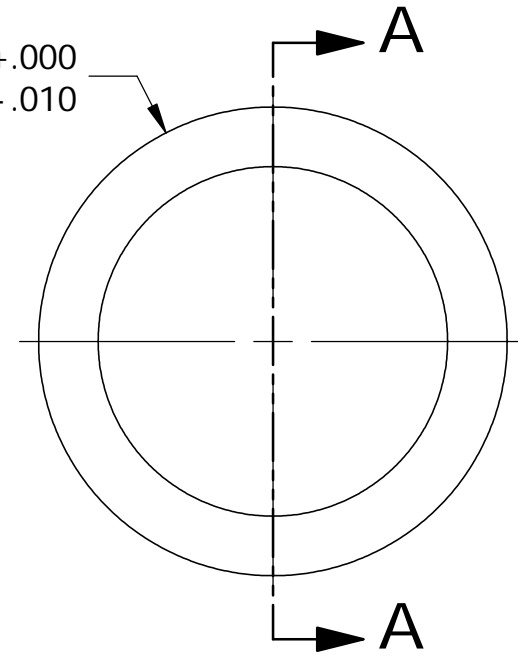


NOTES:  
1) DO NOT BREAK EDGES.



SECTION A-A

$\phi 2.440^{+.000}_{-.010}$



A/R			SST, 304L
REQD	ITEM	PART NO.	DESCRIPTION

PROJECT NAME:	ERNEST ORLANDO LAWRENCE BERKELEY NATIONAL LABORATORY UNIVERSITY OF CALIFORNIA
PROJECT NUMBER:	
NEXT ASSY:	27A330
CALC. WT.	KG. 0.04 LB.



DO NOT SCALE PRINT	CATEGORY CODE:
SCALE: 1:1	
THIRD ANGLE PROJECTION	

HYBRID ION SOURCE (HYBRIS)			
WELDMENT, CATHODE FLANGE			
COVER, WATER, CATHODE FLANGE			
SHEET 1 OF 1	SIZE: A	DWG NO: 27A332	REV B

REV	DWN.	APPVD.	DATE	DESCRIPTION
B	PAL	R. KELLER	12/15/03	ADDED NOTE 1. MATERIAL MODIFIED.
A	PAL	R. KELLER	11/25/03	INITIAL RELEASE

UNLESS OTHERWISE SPECIFIED =>		.X ±.1_INCH .XX ±.01_INCH .XXX ±.005_INCH	
TOLERANCES	FRACTIONS:	-/-	
	ANGLES:	0.1° / INCH	
	MACH. SURFS.	125 MICRO-INCH	<input checked="" type="checkbox"/> OR BETTER

DO NOT SCALE DRAWING.  
INTERPRET PER ASME Y14.5M-1994.  
THREADS ARE CLASS 2.  
BREAK MACHINED EDGES .016 MAX.  
REMOVE BURRS, WELD SPLATTER & LOOSE SCALE.