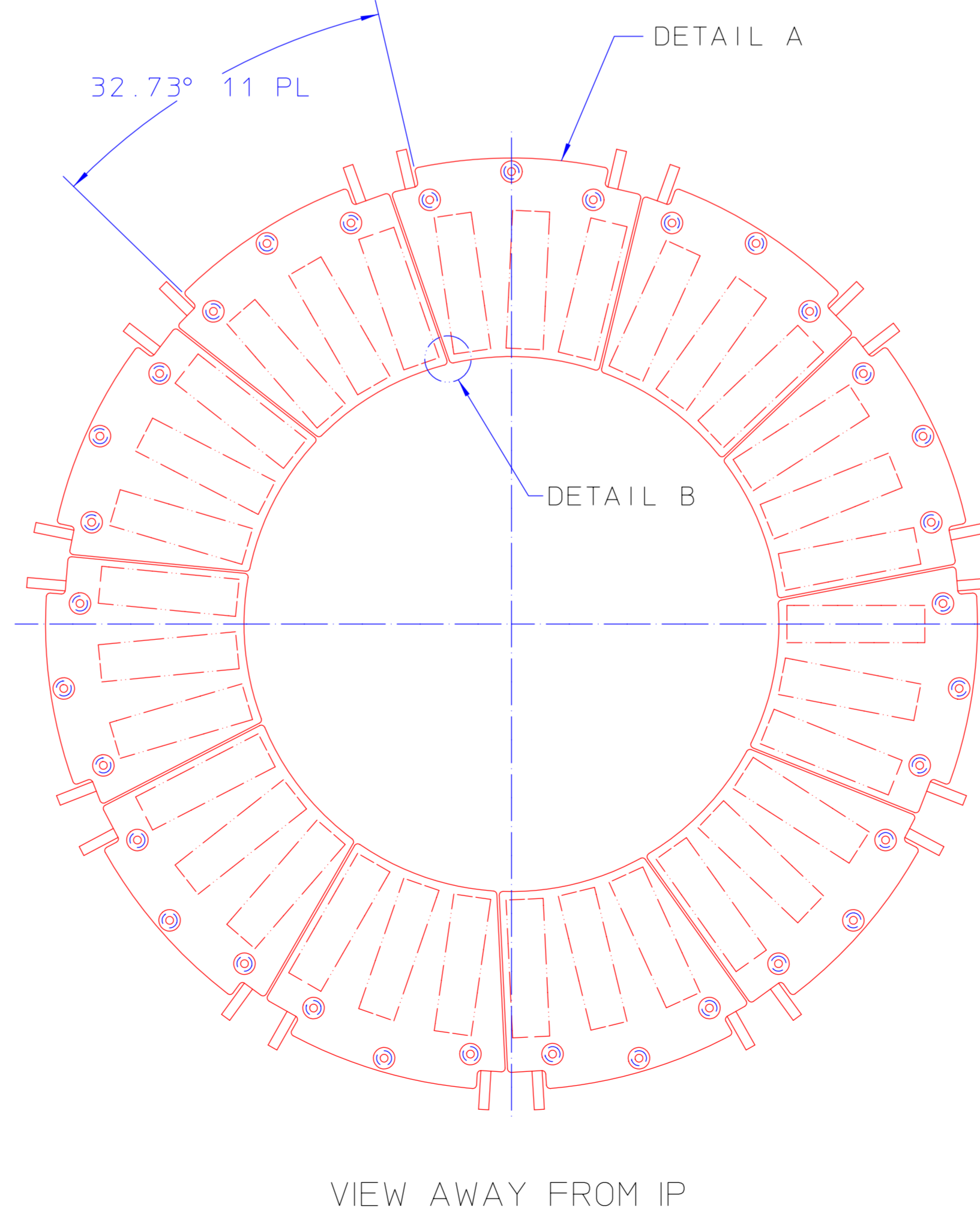
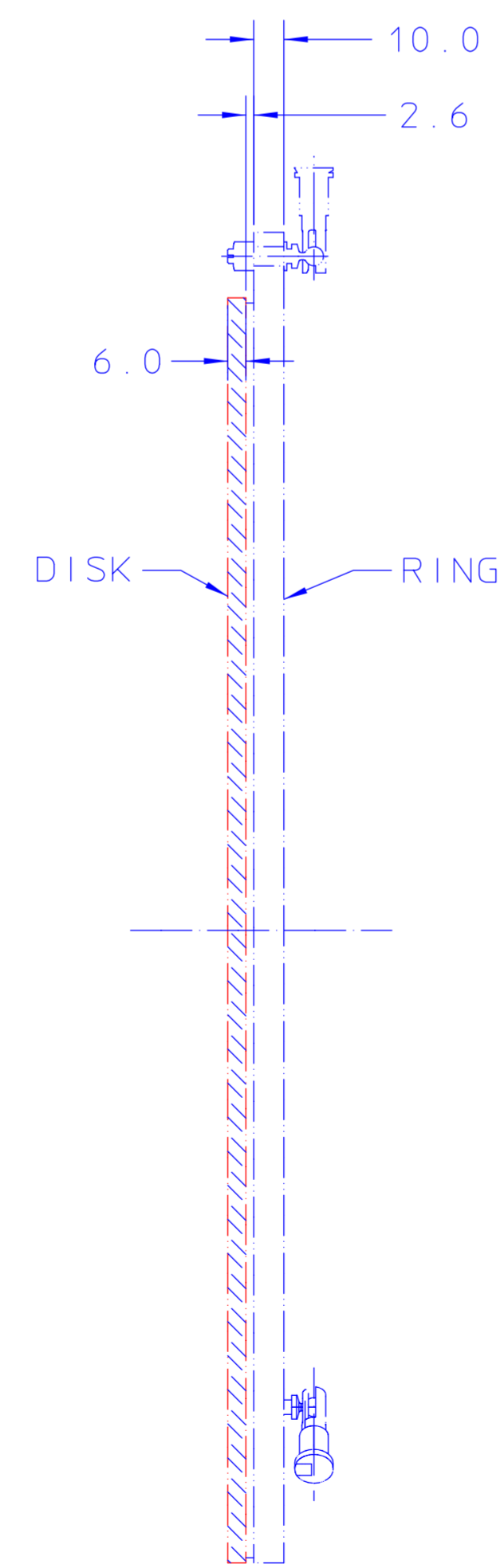
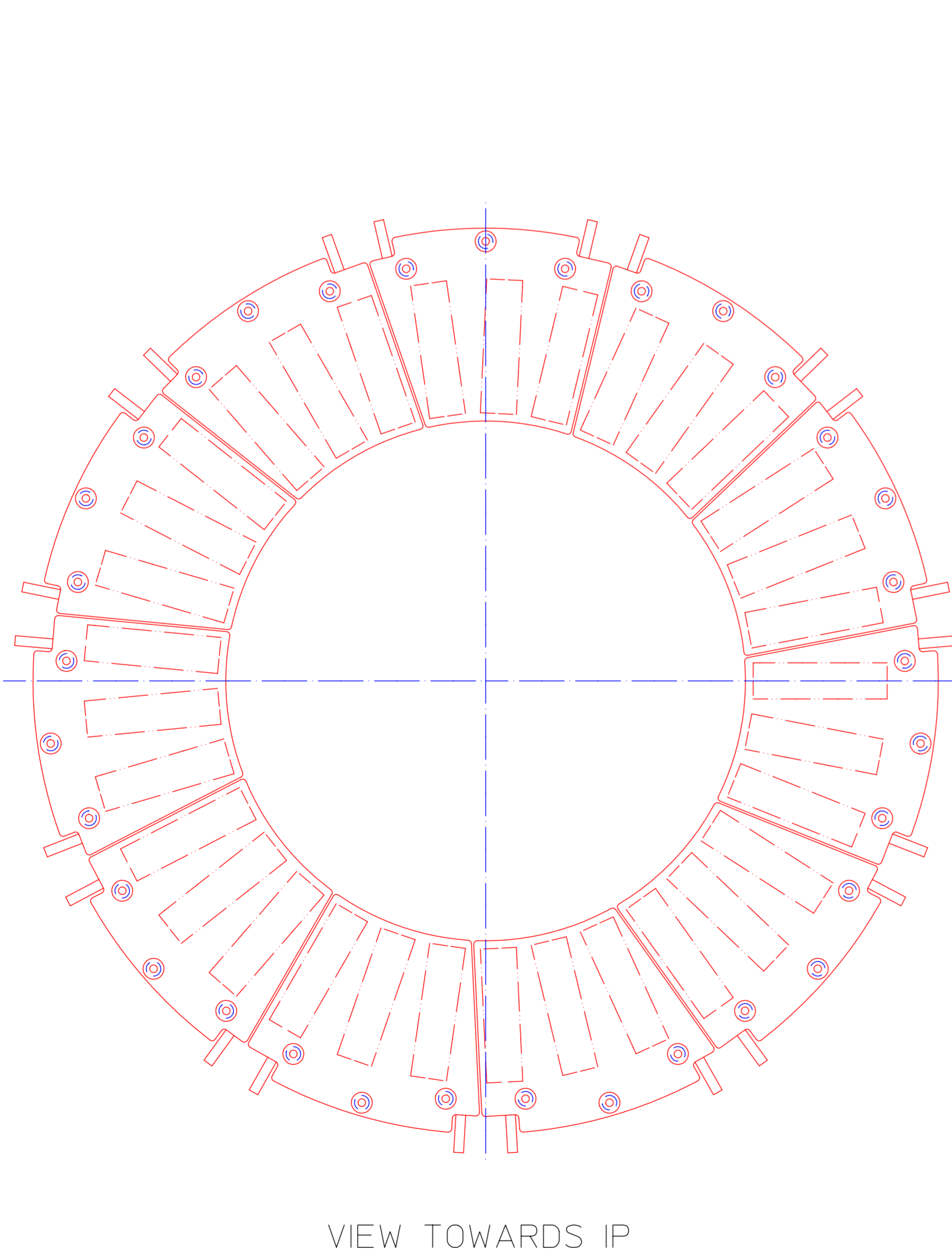
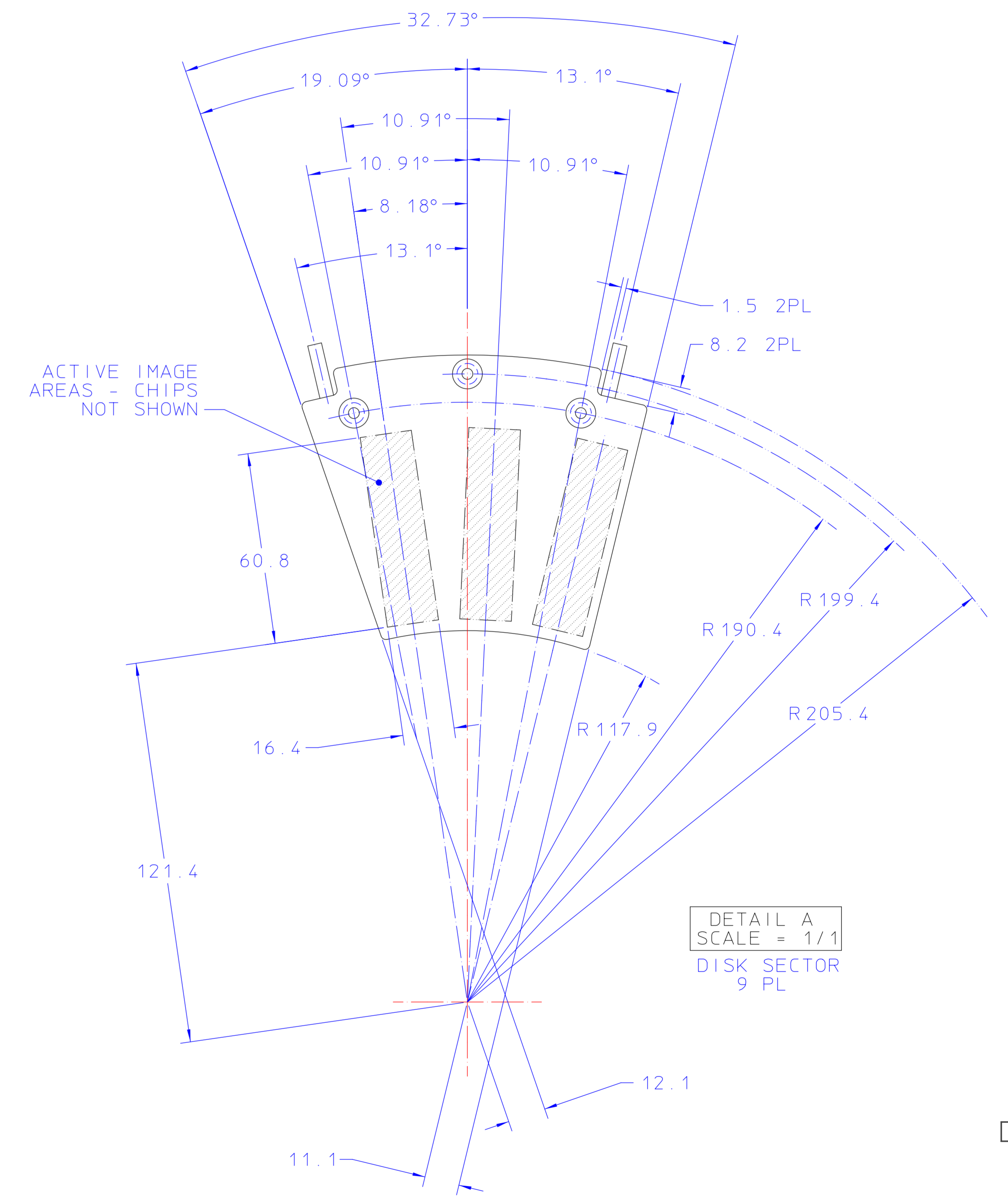
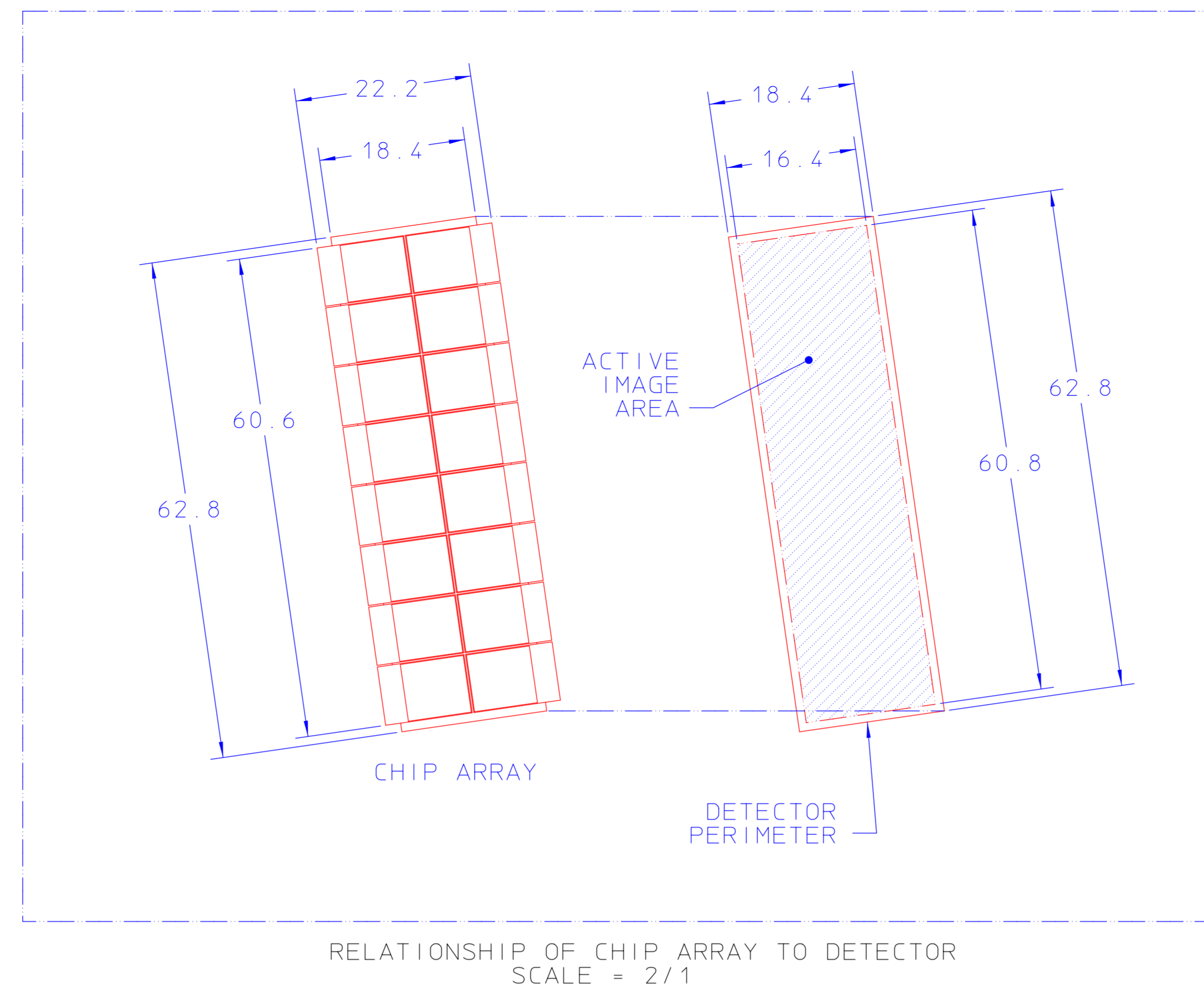
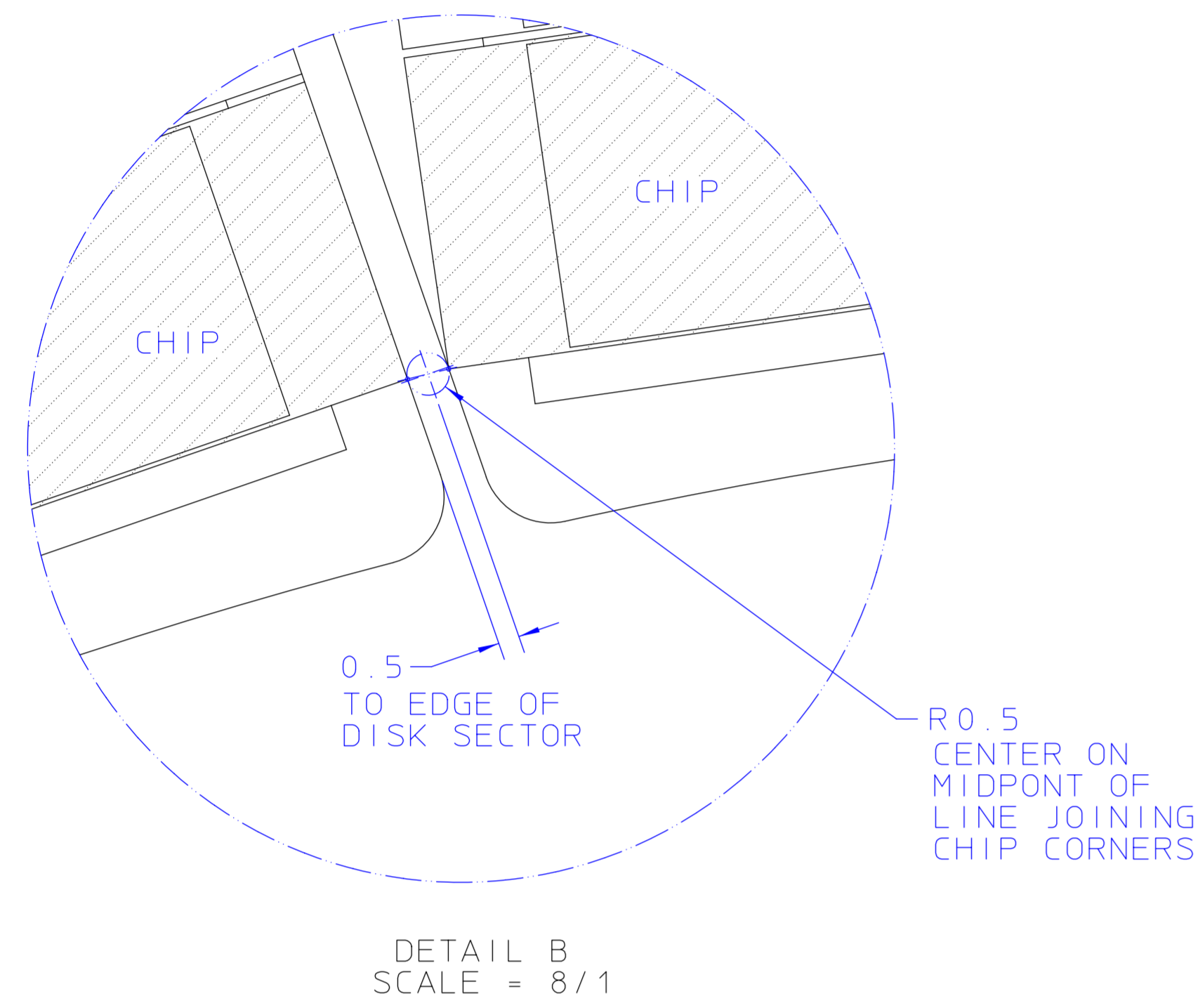


NOTES (UNLESS OTHERWISE SPECIFIED):

1) DIMENSIONS IN MILLIMETERS.

2) "IP" MEANS "INTERSECTION POINT" OF COLLIDER.



PAL2228

ITEM		REQD	PART NO.	DESCRIPTION	
				LAWRENCE BERKELEY NATIONAL LABORATORY	
				UNIVERSITY OF CALIFORNIA-BERKELEY	
				ATLAS	
				PIXEL DETECTOR	
				ENVELOPE, 11-SECTOR DISK	
TOLERANCES		UNLESS OTHERWISE SPECIFIED		SURFACE FINISH	
X ± .1	FRAC ± 1/64	ACCT. NO.	SERIAL NO.	CLEAN	
XX ± .01	ANGLES ± 0.5°	DATE ISSD	DATE RECD	TAG	
XXX ± .005	FINISH 125.7	DATE DELIVER	NO. RECD	PATENT CLEAR	
THREADS ARE CLASS 2		CHAMFER ENDS OF ALL SCREW THREADS 30°		DWG. NO.	
ON MACHINE CUT THREADS		BROKEN EDGES .014 MAX. ON MACHINED WORK		DATE 10-15-99	
REMOVE BURRS WELD SPLATTER & LOOSE SCALE		REF: ASME Y14.5M & ANSI B46.1		DATE 10-15-99	
1 PL PL 10-21-99		ADDED DISK & RING EDGE DIMS		MICROFILMED	
REV DWG (CHK ZONE) DATE		CHANGES		DESIGN ACCT. NO.	
				CATEGORY CODE	
				DWG. NO.	
				SCALE HALF	
				SIZE	
				REV	
				PAL2228 1	