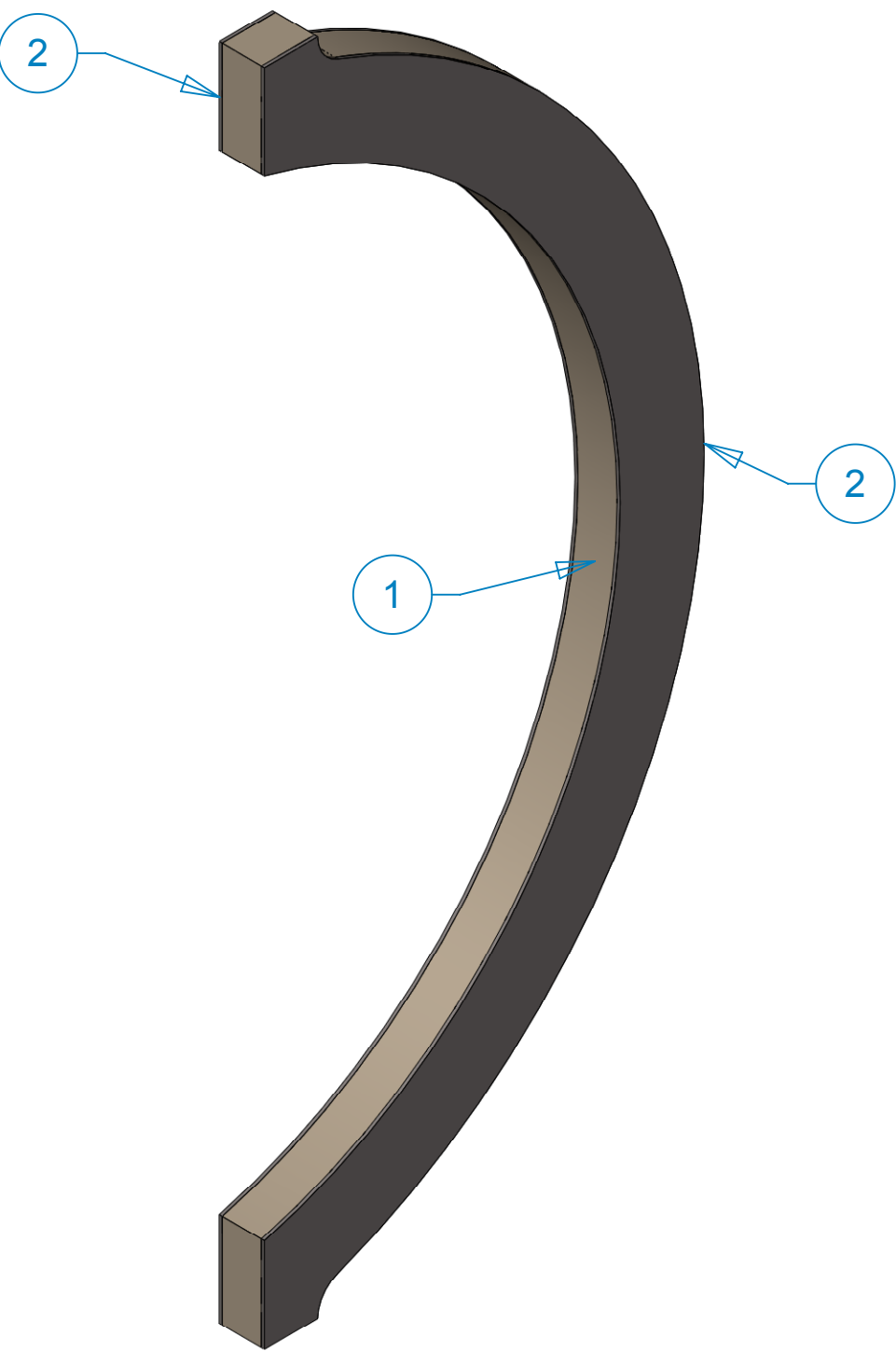


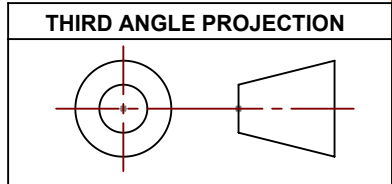
REVISIONS			
REV	DESCRIPTION		DATE



NOTES: UNLESS OTHER WISE SPECIFIED

1. ALL DIMENSIONS IN MILLIMETERS
2. DIMENSIONS AND TOLERANCING PER ASME Y14.5M-1994
3. SURFACE TEXTURE PER ANI/ASME B 46.1-1985
4. REMOVE ALL BURRS AND BREAK SHARP EDGES TO A MAXIMUM OF .4
5. ALL INSIDE CORNERS TO BE .4 RADIUS MAX
6. COUNTERSINK 82 DEGREES ALL TAPPED HOLES TO MAJOR DIAMETER
7. COUNTERSINK 82 DEGREES APPROXIMATELY .08/1.5 DEEP ALL DRILLED HOLES
8. PARTS TO BE THOROUGHLY CLEANED TO REMOVE ALL OIL, GREASE, DIRT AND CHIPS
9. PART NUMBER (DRAWING NO., DASH NO., REVISION NO., SERIAL NO.) TO BE CLEARLY MARKED ON THE PACKAGING BAG OR PART ITSELF.

THIS DOCUMENT CONTAINS INFORMATION THAT IS THE PROPRIETARY PROPERTY OF HYTEC, INC.
REPRODUCTION, DISCLOSURE, OR RELEASE TO OTHERS, MANUALLY OR ELECTRONICALLY,
IS STRICTLY PROHIBITED WITHOUT THE PRIOR WRITTEN CONSENT OF HYTEC, INC.



PARTS LIST				
ITEM NO.	QTY.	PART NO.	DESCRIPTION	MATERIAL
1	1		Barrel 2 Support Core	Allcomp K3 or Similar
2	2		Barrel 2 Support Skin	M55J/954-3 [0,+60,-60]s
3	AR		Adhesive	HYSOL 9396

UNLESS OTHERWISE SPECIFIED: DIMENSIONS ARE IN MILLIMETERS -TOLERANCES-	CAD GENERATED DRAWING, DO NOT MANUALLY UPDATE DO NOT SCALE DRAWING	<div><i>HYTEC, INC</i></div> <div>TITLE</div> <div>PHENIX CENTRAL UPGRADE VTX BARREL 2 SUPPORT PANEL ASSEMBLY</div>				
DECIMALS X = +/- .5 .X = +/- .1 .XX = +/- .01 .XXX = +/- .001	ANGULAR X = +/- 30' .XX = +/- 15' SURFACE FINISH = 250					
FINISH						
PART NO. 111-PHX-02-2013-1		SIGNATURE	DATE	DWG. NO. 111-PHX-02-2013	SIZE D	SHEET NO. 1 of 1
	Designer	Roger L. Smith	3/14/2007			
	Drawn	Roger L. Smith	4/7/2009			
	Checked	RJ Ponchione	4/7/2009			
	Engineer	RJ Ponchione	4/7/2009			
	Approved	RJ Ponchione	4/7/2009	SCALE 2:1	REVISION	