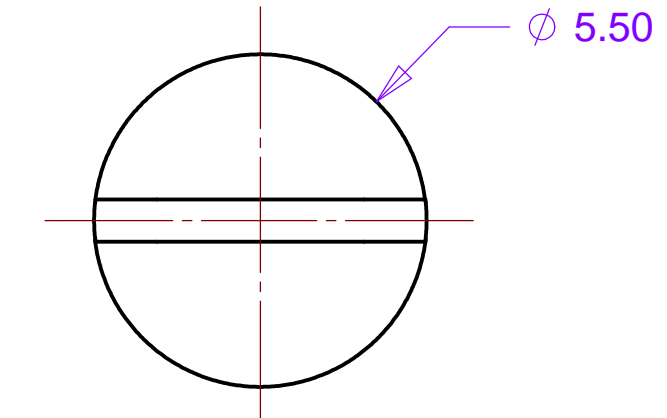
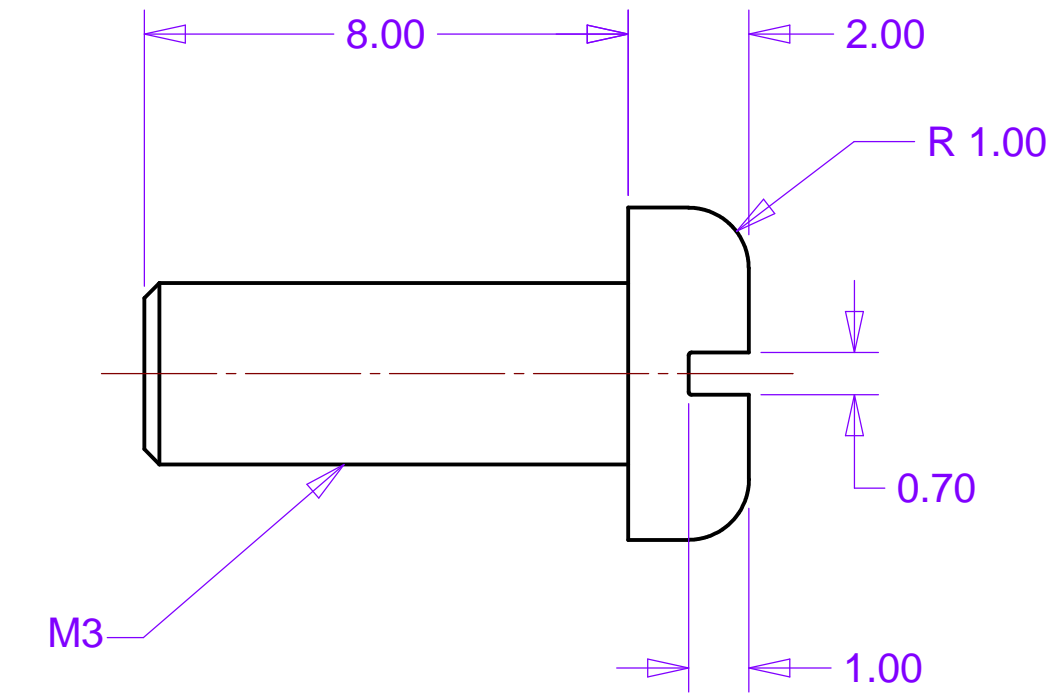
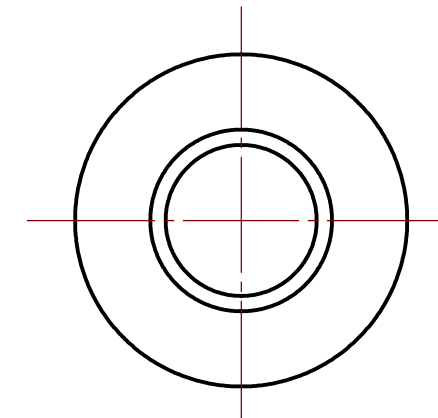
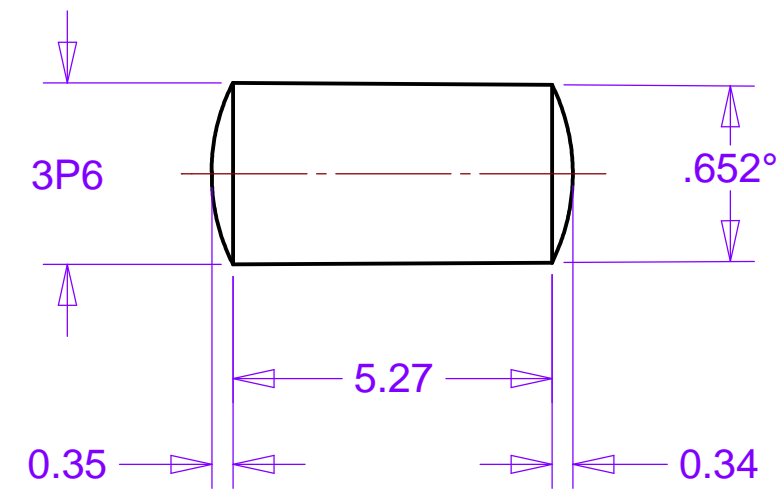
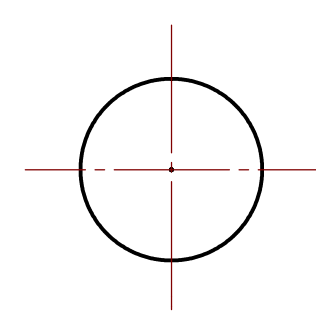
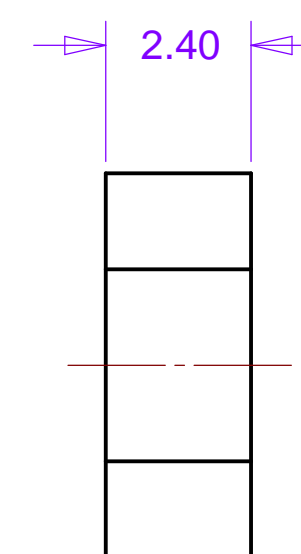
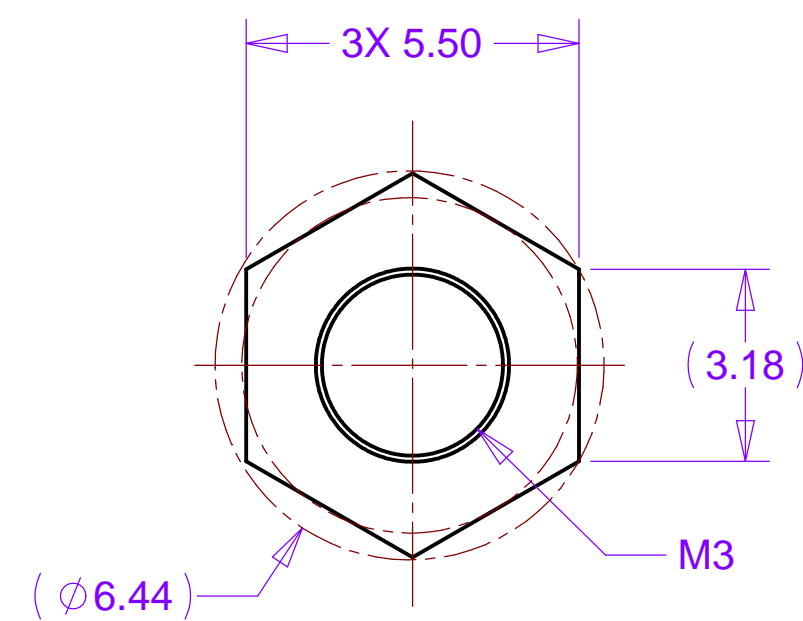


DWG. NO. 21F741		SIZE	REV.	SH. 1	1	
ITEM	PART NO	REQD	DESCRIPTION			MATERIAL



1 **COMPOSITE TAPER PIN**
MATERIAL: 3D Impregnated Fabric

2 **COMPOSITE M3 SCREW**
MATERIAL: 3D Impregnated Fabric



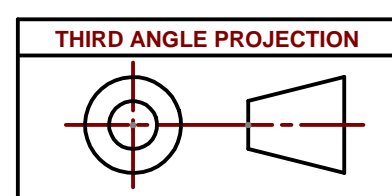
1 **COMPOSITE M3 NUT**
MATERIAL: 3D Impregnated Fabric

NOTES: UNLESS OTHER WISE SPECIFIED

1. ALL DIMENSIONS IN MILLIMETERS
2. DIMENSIONS AND TOLERANCING PER ASME Y14.5M-1994
3. SURFACE TEXTURE PER ANI/ASME B 46.1-1985
4. PARTS TO BE THOROUGHLY CLEANED AND PREPPED FOR BONDING. NO MACHINE OIL ALLOWED.
5. PART NUMBER (DRAWING NO., DASH NO., REVISION NO., SERIAL NO.) TO BE CLEARLY MARKED ON THE PART ITSELF.

6 DIMENSIONS AND TOLERANCES ARE "AS MOLDED", AND ARE TO BE OBTAINED USING MOLDING FIXTURES DURING FORMING ONLY. NO MACHINING ALLOWED WITHOUT PRIOR APPROVAL.

7. ONLY CARBIDE CUTTING TOOLS ALLOWED TO PREVENT EDGE CHIPPING AND FRAYING.

[illegible]

UNLESS OTHERWISE SPECIFIED		SHOP ORDERS		SER NO.		ERNEST ORLANDO LAWRENCE	
TOLERANCES	X.X ± 0.5	FRAC. ± 1/64	NO. DEC.	DATE ISSD	BERKELEY NATIONAL LABORATORY		
	X.XX ± 0.25	ANGLES ± 30'	NO. DET.	DATE RECD	UNIVERSITY OF CALIFORNIA - BERKELEY		
	X.XXX ± 0.013	FINISH 1.6	TO SURFACE TREATMENT				
DO NOT SCALE PRINT				IDEN TAG	<div> <div>LBNL ATLAS</div> <div>END CONE</div> <div>FASTENING & LOCATING</div> <div>COMPOSITE HARDWARE</div> </div>		
THREADS ARE CLASS 2				PROJECT NUMBER	<div> <div>ATL-IP-ED-XXXX</div> <div>10-4145-00000 (SUBMITTER'S LOGO)</div> </div>		
CHAMFER ENDS OF ALL SCREW THREADS 30°				PROJECT NAME	MICROFILMED:		
CUT ROUND, 1.5" THREAD RELIEF ON MACHINED THREADS				DWG BY	DWG. TYPE	SHOWN ON	SCALE: 8:1
BREAK EDGES .016 MAX. ON MACHINED WORK				CHK BY	ASSEM	nnXxxx	SHEET 1 OF 1
REMOVE BURRS, WELD SPATTER & LOOSE SCALE				APR	PATENT CLAIM:	DESIGN ACCT. NO.	SIZE
IN ACCORDANCE WITH ASME Y14.5m & B46.1				DATE	01/27/03	CATEGORY CODE	REV.
				DATE	01/27/03	DWG. NO.	
					P1AP-11	AP6250	21E741