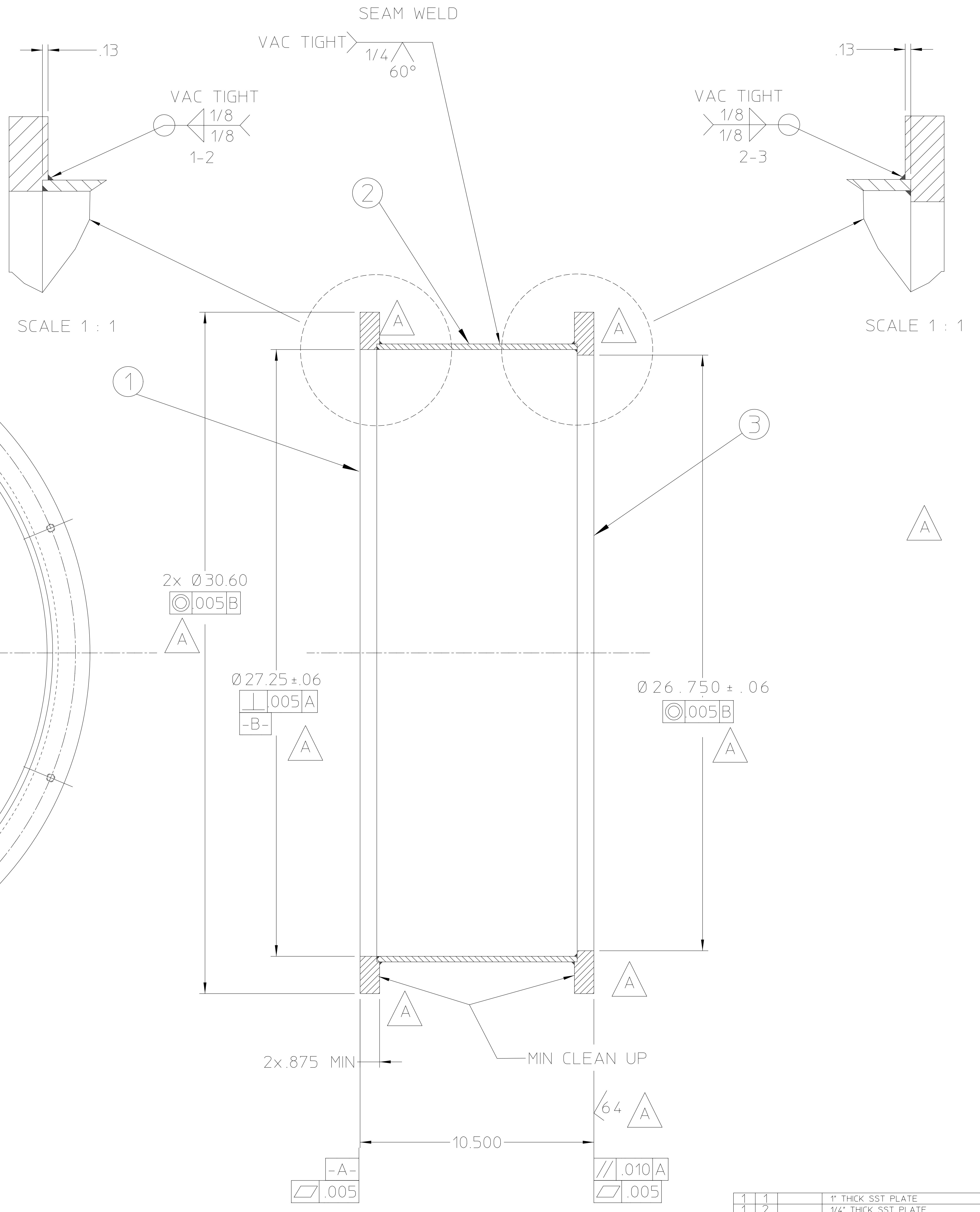
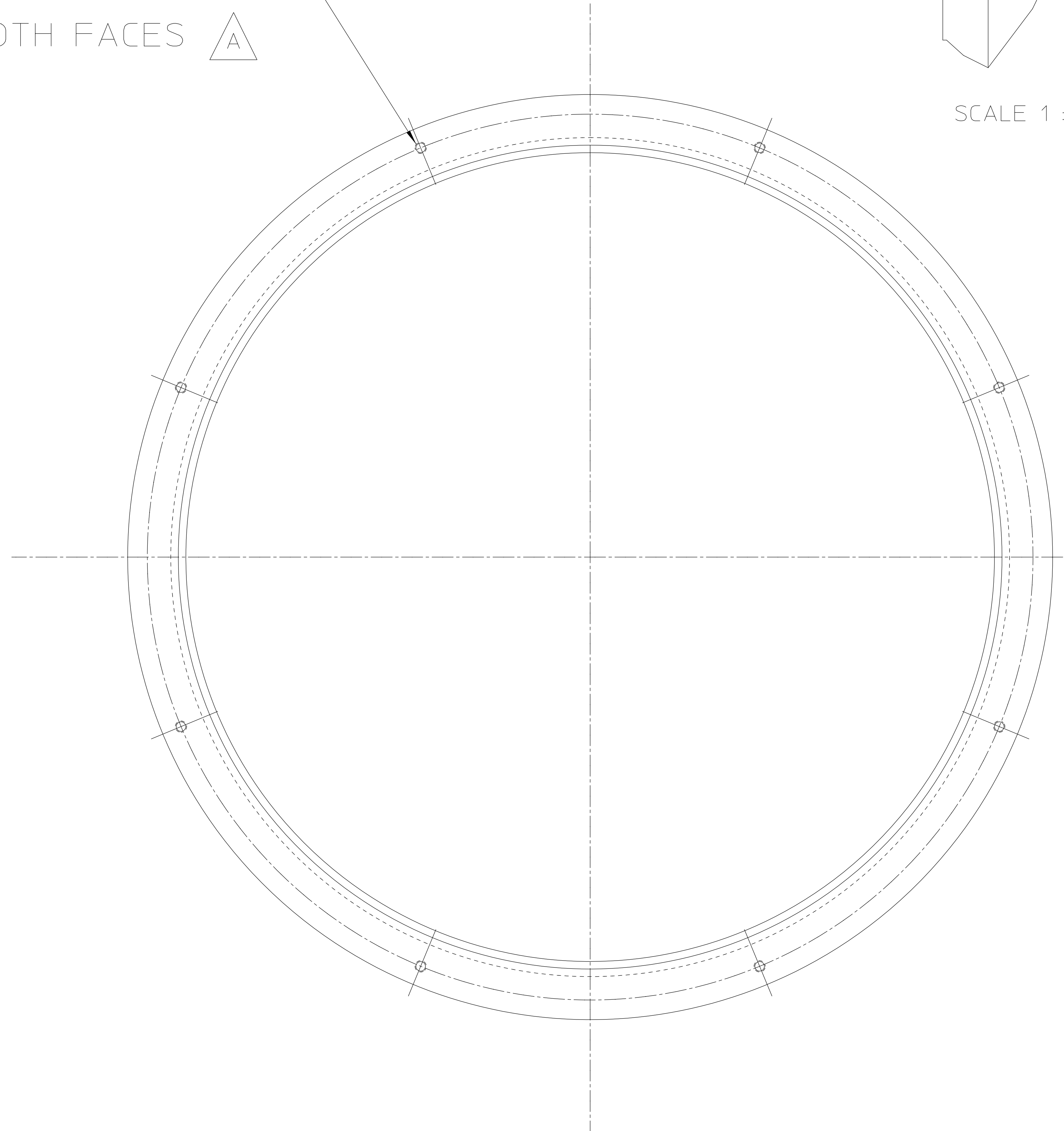


8X 3/8-16 THRU EQ. SPD.
ON Ø29.300 BC $\text{Ⓞ}005\text{B}$
BOTH FACES $\triangle A$



25B0696A

1	1	1" THICK SST PLATE
1	2	1/4" THICK SST PLATE
1	3	1" THICK SST PLATE
RECD	TEMP PART NO	DESCRIPTION
LAWRENCE BERKELEY LABORATORY		
UNIVERSITY OF CALIFORNIA-BERKELEY		
SNS FRONT END		
LEBT TEST STAND		
VACUUM CHAMBER		
TREATMENT	ELECTRO POLISH	
IDENT	TAG	
DATE	3/30/99	
BY	J. M. PRUYN	
CHK	D. CHENG	
DATE	3/31/99	
PATENT CLEAR		
DWG. TYPE	ASSEMBLY	
SHOWN ON		
SCALE	FULL	
DWG. NO.	25B0696	
REV.	1	

UNLESS OTHERWISE SPECIFIED	SC	X ±	FRAC	± 1/64
THREADS ARE CLASS 2	XX	± .030	ANGLES	± 1°
CHAMFER END OF ALL SCREW THREADS 30°	XXX	± .015	FINISH	125/7
CUT 1/8 PITCH FROD RELIEF WITH ROUND NOSE TOOL				
ON MACHINE CUT THREADS				
BREAK EDGES .016 MAX. ON MACHINED WORK				
REMOVE BARBS WELD SPLATTER & LOOSE SCALE				
REFERENCES: ANSI Y14.5 & B46.1				
REV	DWG	CHK	ZONE	DATE