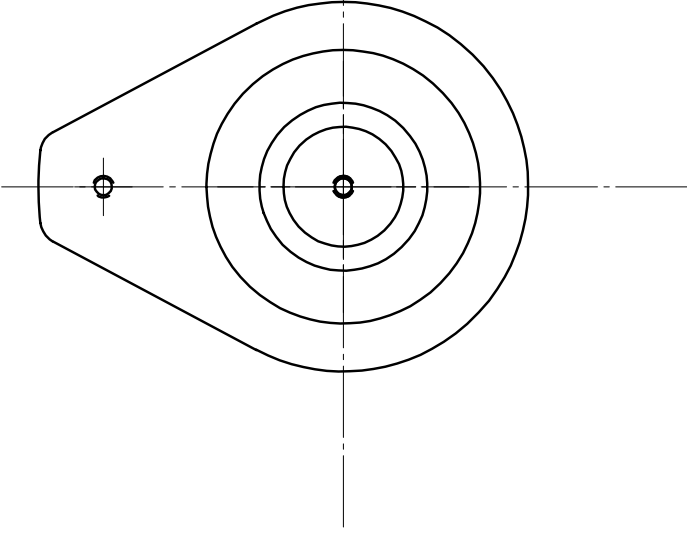
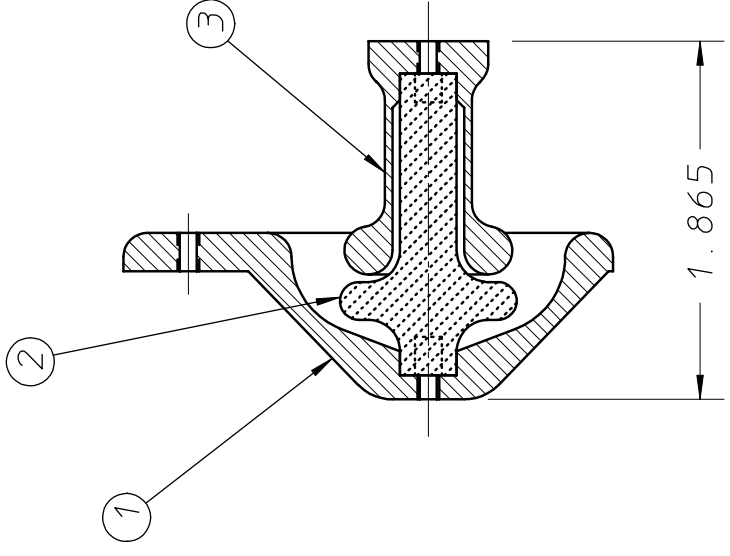
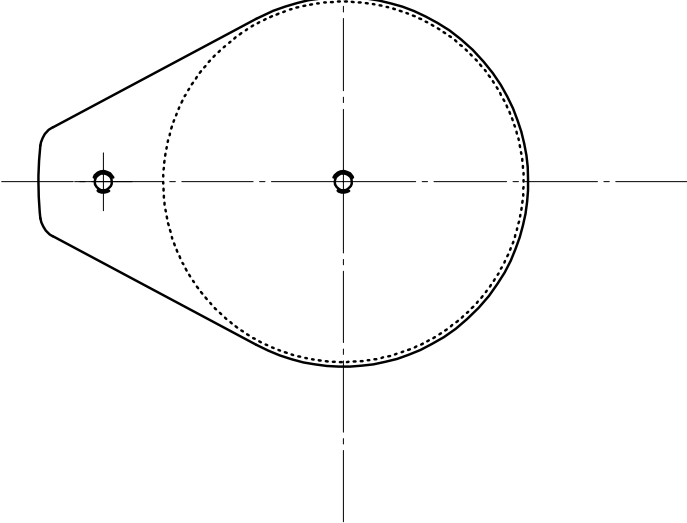


REQD	ITEM	PART NUMBER	DESCRIPTION
1	1	21G7193	G3 INSULATOR SHIELD, OUTER
1	2	21G7202	G3 INSULATOR STANDOFF
1	3	21G7212	G3 INSULATOR SHIELD, INNER

21G7272A

ADDITIONAL NOTES:

- PART (2) IS TO BE JOINED TO PARTS (1) AND (3) USING EPON/VERSAMID EPOXY.
- PRIOR TO JOINING, EPOXY MUST BE DEGASSED TO REDUCE GAS CONTENT. REFER TO ENG. NOTE M8000 TITLED, "PREPARING EPON-VERSAMID EPOXY FOR VACCUUM SERVICE".
- AFTER CURING, ENSURE THAT NO TRAPPED VOLUMES ARE LEFT IN THE JOINT BY DRILLING AND CHASING THREADS WITH A TAP.



REV	DWN	CHK	DATE	DESCRIPTION
A	DWC		9/15/01	ADDED REFERENCE TO ENG. NOTE M8000 IN NOTE #2.

UNLESS OTHERWISE SPECIFIED
TOLERANCE .X ± .1 .XX ± .01 .XXX ± .010
SURFACE FINISH 125 ✓
1. SAWED, FLAMECUT, SHEARED OR CUT STOCK FINISH.
2. THREADS CLASS 2.
3. CHAMFER ENDS OF ALL SCREW THRODS 30°.
4. 1/2 PITCH RELIEF WITH ROUND NOSE TOOL ON ALL MACHINE CUT THRODS.
5. BREAK EDGES 1/64 MAX. ON MACHINE WORK.
6. REMOVE BURRS, LOOSE SCALE AND WELD SPLATTER.
7. REF. -USASI OR ASA STDS SECT Y-14 & B46-1.

DATE ISSD DATE RECD NO REQD
DATE RECD NO REQD
SER NO
SURFACE TREATMENT DEGREASE
IDENTIFIC TAG
DWC BY D. CHENG DATE 5-20-99
CHK BY DATE

ACCT NO
DATE RECD NO REQD
SER NO

SHOP ORDERS

LAWRENCE BERKELEY LABORATORY
UNIVERSITY OF CALIFORNIA-BERKELEY
SNS-FES ION SOURCE AND LEFT MECHANICAL SYSTEMS
G3 INSULATOR ASSEMBLY
PAT CLEAR DWG TYPE SHOWN ON SCALE: FULL
DETAIL 21G7116 DO NOT SCALE PRINTS
MICROFILMED DESIGN ACCT NO CATEGORY CODE DWG NO REV
8210-14 FE3111 21G7272A