

D

C

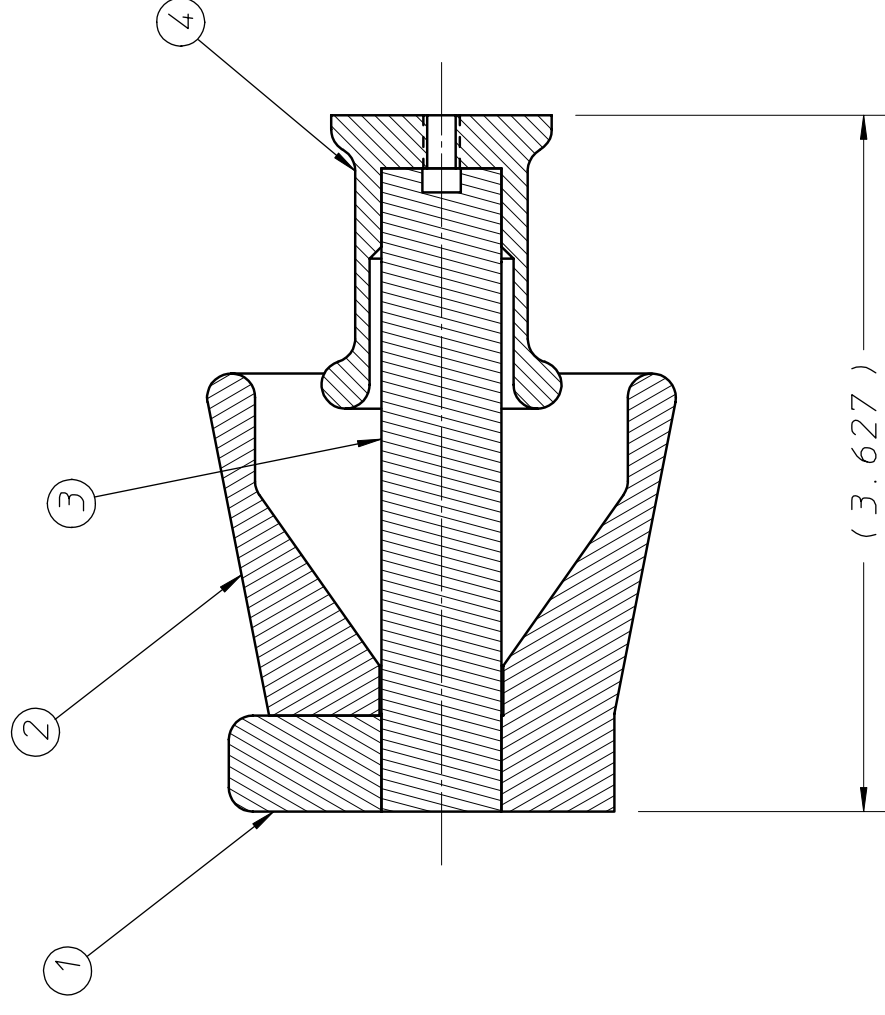
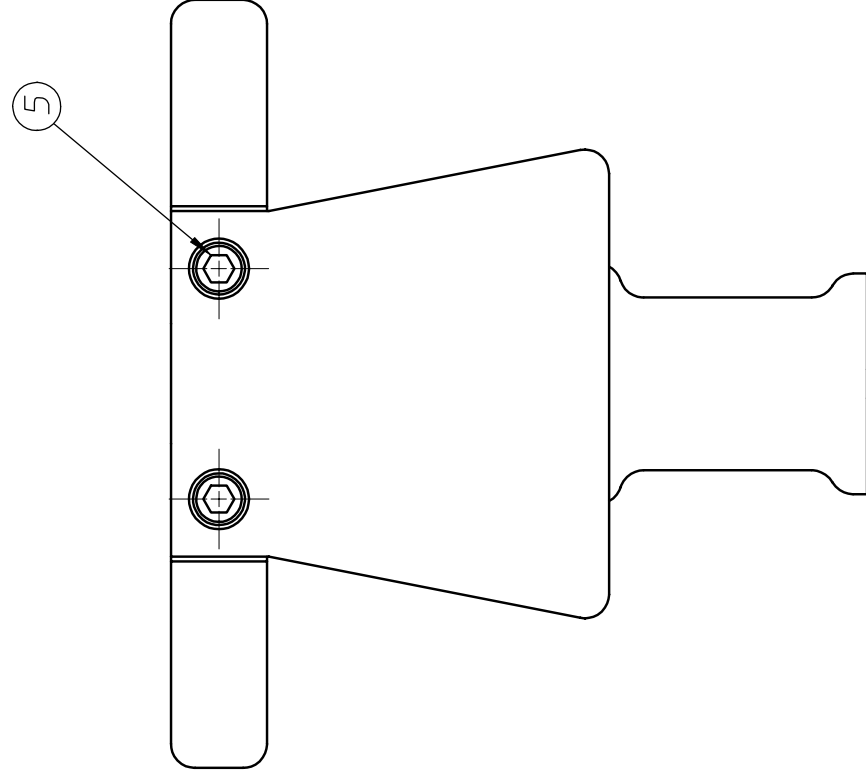
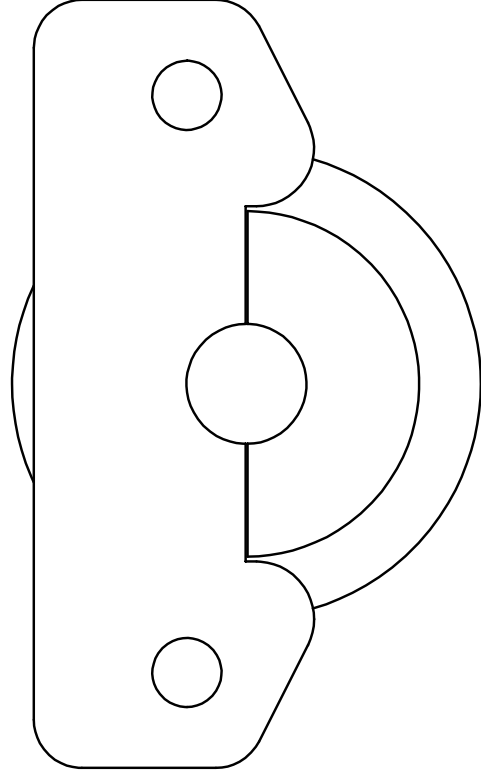
B

A

REQ	ITEM	PART NUMBER	DESCRIPTION
1	1	21G7163	MAIN GROUND INSULATOR SHIELD, CLAMP
1	2	21G7153	MAIN GROUND INSULATOR SHIELD, OUTER
1	3	21G7172	MAIN GROUND INSULATOR STANDOFF
1	4	21G7182	MAIN GROUND INSULATOR SHIELD, INNER
2	5		#8-32 UNC SHCS, STAINLESS, .75" LONG

ADDITIONAL NOTES:

- PART (3) IS TO BE JOINED TO PART (4) USING EPON/VERSAMID EPOXY.
- PRIOR TO JOINING, EPOXY MUST BE VACUUM PUMPED TO REDUCE GAS GONTENT. REFER TO ENG. NOTE M8000 TITLED "PREPPING EPON-VERSAMID EPOXY FOR VACUUM SERVICE."
- AFTER CURING, ENSURE THAT NO TRAPPED VOLUMES ARE LEFT IN THE JOINT BY DRILLING AND CHASING THREADS WITH A TAP.



21G7263A

4

3

2

1

D

C

B

A

REV	DWG	CHK	ZONE	DATE	CHANGES
A	DWC	D4	9/13/01	ADDED REFERENCE TO ENG NOTE M8000 IN NOTE 2	

UNLESS OTHERWISE SPECIFIED		SHOP ORDERS	
.X ± .1	FRAC. ± 1/64	ACCT. NO.	SERIAL NO.
.XX ± .01	ANGLES ± .01°	DATE RECD.	NO. RECD.
XXX ± .010	FINISH 125√	DELIVER TO	
TOLERANCES		SURFACE TREATMENT	
THREADS ARE CLASS 2		DEGREASE	
CHAMFER ENDS OF ALL SCREW THREADS 30°		IDENT. METH.	
CUT 1.5 PITCH THRD RELIEF WITH ROUND NOSE TOOL ON MACHINE CUT THREADS.		TAG	
BREAK EDGES .016 MAX. ON MACHINED WORK		DWG. BY	
REMOVE BURRS, WELD SPLATTER & LOOSE SCALE		D. CHENG	
REFERENCES: ANST 114.5 & B46.1		DATE	
		5-20-99	

LAWRENCE BERKELEY LABORATORY			
UNIVERSITY OF CALIFORNIA-BERKELEY			
SNS-FES ION SOURCE AND LEBT			
MECHANICAL SYSTEMS			
MAIN GROUND INSULATOR ASSEMBLY			
PATENT CLEAR	DWG. TYPE	SHOWN ON SCALE	DO NOT SCALE PRINTS
MICROFILMED	DETAIL	21G7116	FULL
DESIGN ACCT. NO.	FE3111	8210-14	21G7263
DATE	5-20-99	DATE	REV.
CHK.		CHK.	A