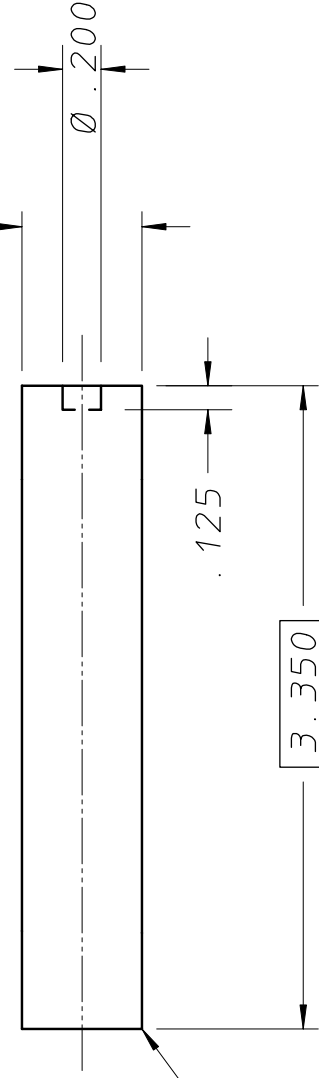
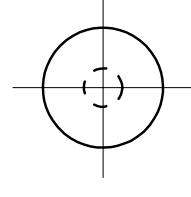


REQD		ITEM	PART NUMBER	DESCRIPTION
A/R		1	-	ALUMINA, AT LEAST 99% AI2O3
21G7172				



CHAM .05 x .05  
2 PL. ALL AROUND

$\emptyset .625 \begin{smallmatrix} +.000 \\ -.001 \end{smallmatrix}$

UNLESS OTHERWISE SPECIFIED	SHOP ORDERS		LAWRENCE BERKELEY LABORATORY	
TOLERANCE .X ± .1 .XX ± .01 .XXX ± .002	ACCT NO	SER NO	UNIVERSITY OF CALIFORNIA-BERKELEY	
SURFACE FINISH 32 ✓	DATE REQD	NO REQD	SNS-FES ION SOURCE AND LEFT	
1. SAWED, FLAMECUT, SHEARED OR CUT STOCK FINISH.	DELIVER TO		MECHANICAL SYSTEMS	
2. THREADS CLASS 2.	SURFACE TREATMENT DEGREASE		MAIN GROUND INSULATOR	
3. CHAMFER ENDS OF ALL SCREW THRDS 30°.	IDENTIFIC TAG		PAT CLEAR	DWG TYPE SHOWN ON SCALE: 2:1
4. 1 1/2 PITCH RELIEF WITH ROUND NOSE TOOL ON ALL MACHINE CUT THRDS.	BY D. CHENG	DATE 5-14-99	MICROFILMED	DESIGN ACCT NO CATEGORY CODE DWG NO REV
5. BREAK EDGES 1/64 MAX. ON MACHINE WORK.	CHK BY	DATE	8210-14	FE3111
6. REMOVE BURRS, LOOSE SCALE AND WELD SPLATTER.				21G7172
7. REF. -USASI OR ASA STDS SECT Y-14 & B46-1.				