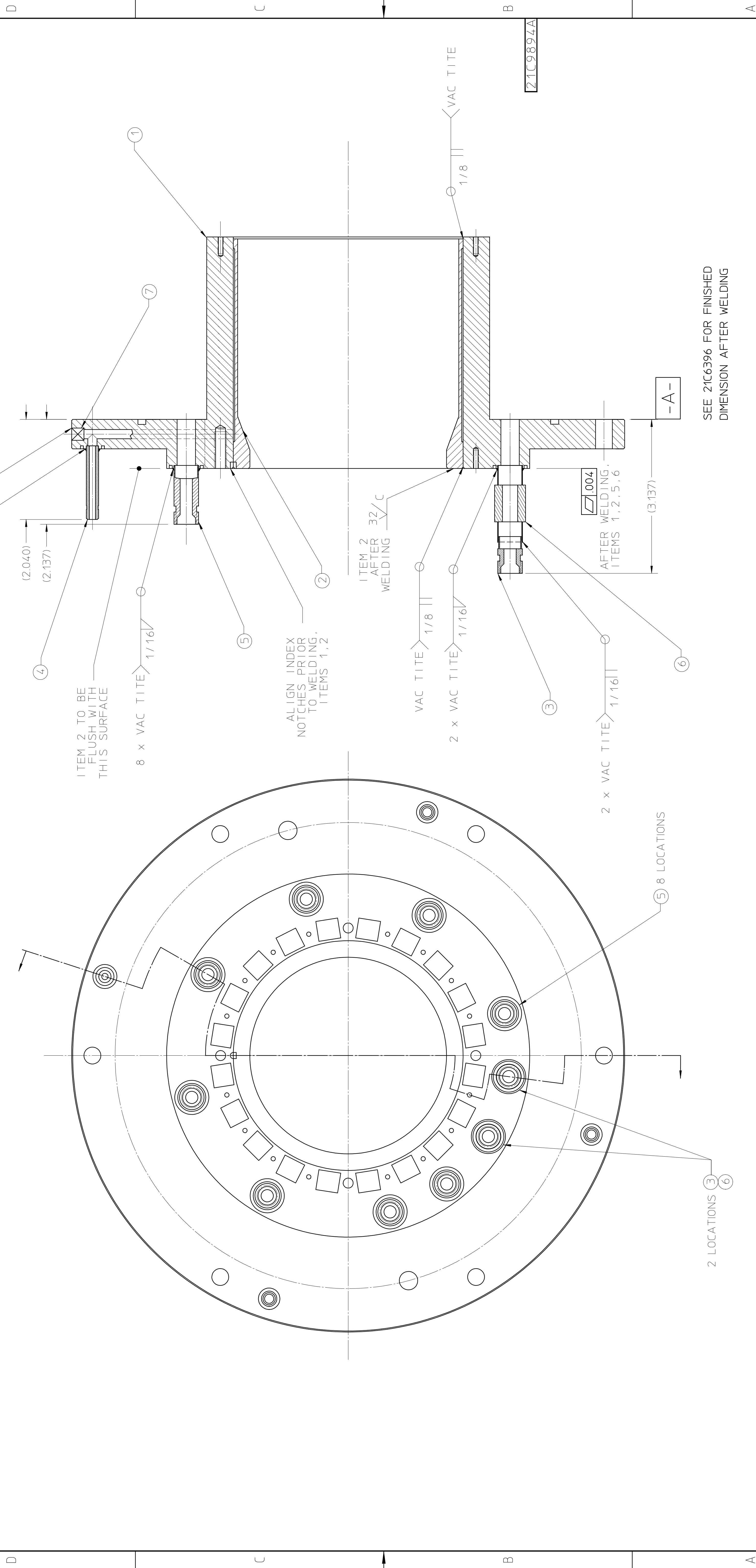


NOTES (UNLESS OTHERWISE SPECIFIED):
 1) DIMENSIONS IN INCHES.

ITEM	RECD	PART NUMBER	DESCRIPTION
1	1	21C6396	CUSP MAGNET BODY
2	1	21C9786	PLASMA CHAMBER
3	2	21C9903-1	MODIFIED ULTRA-TORR FITTING - SHORT
4	4	21G7711-1	1.5" LeGRIS WATER FITTING MACHINING PREP
5	8	21G9903-2	MODIFIED ULTRA-TORR FITTING - LONG
6	2	9631007	1/2" 10kV WATER BREAK, ISI, INC
7	4		1/4" ROD x 0.25" LG. S.S. 304



SEE 21C6396 FOR FINISHED
 DIMENSION AFTER WELDING

UNLESS OTHERWISE SPECIFIED		SHOP ORDERS		LAWRENCE BERKELEY NATIONAL LABORATORY	
FRAC.	± 1/64	ACCT.	SERIAL	UNIVERSITY OF CALIFORNIA-BERKELEY	
ANGLES	± 0.5°	DATE	NO.	SNS - FRONT END SYSTEM	
FINISH	125.7	RECD.	RECD.	ION SOURCE PROTOTYPE DESIGN	
DELIVER	CLEAN	DELIVER	DELIVER	PLASMA CHAMBER WELDMENT	
THREADS	ALL SCREEN THREADS 30°	SURFACE	TAG	PATENT CLEAR	
CHAMFER	ENDS OF ALL SCREEN THREADS 30°	IDENT.		SCALE FULL	
OF MACHINE	FOR ALL SCREEN THREADS	METH.		DWG. NO. 21C9894	
BREAK EDGES	0.04 MAX. ON MACHINED WORK	DWG. PAL		REV. A	
REF. ASME	Y14.5M & ANSI B46.1	DATE		DESIGN ACCT. NO. 8210-14	
		BY		CATEGORY CODE	
		CHK		DWG. NO. 21C9894	
		ZONE		REV. A	
		DATE		SIZE	
				DWG. NO. 21C9894	
				REV. A	