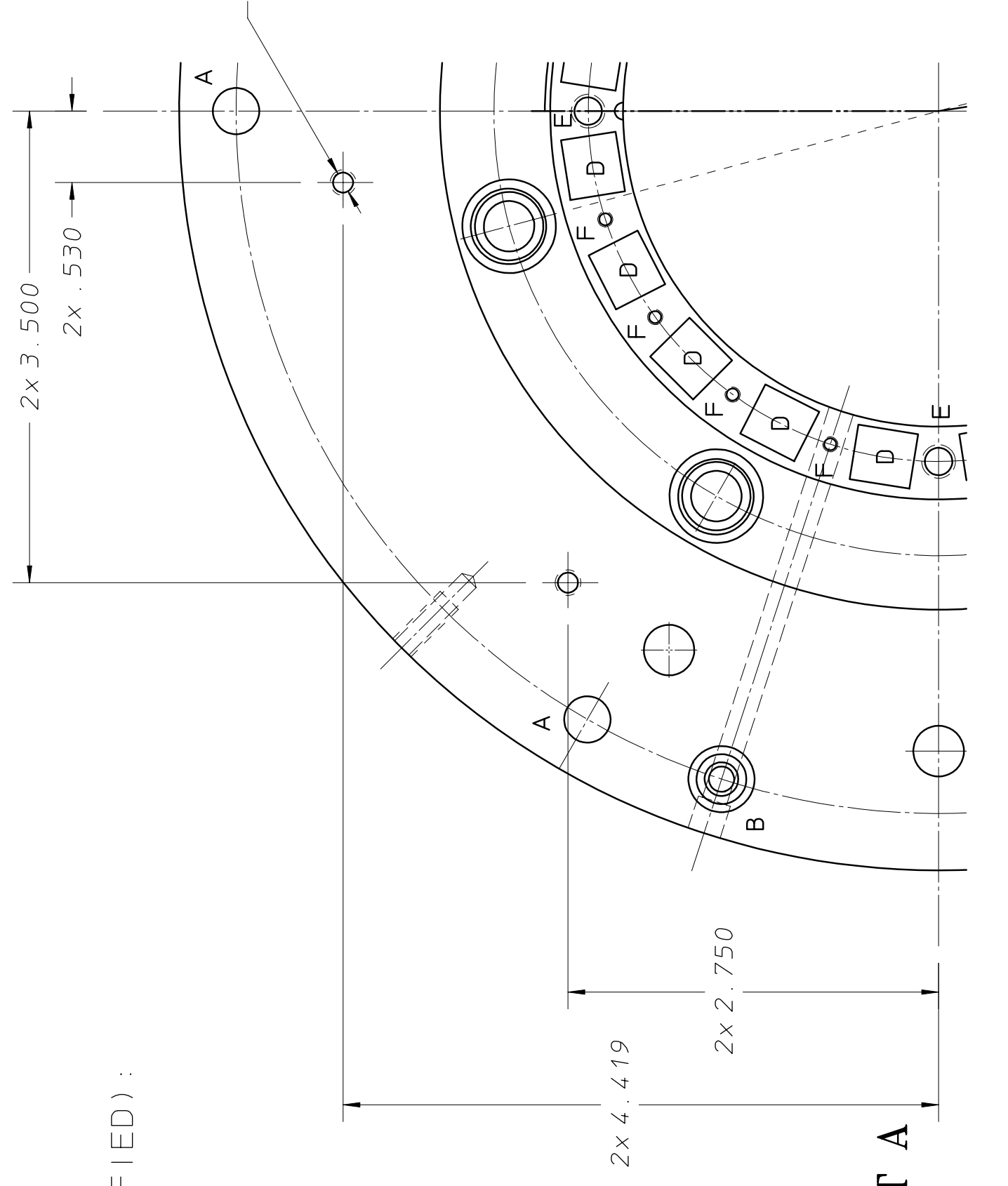
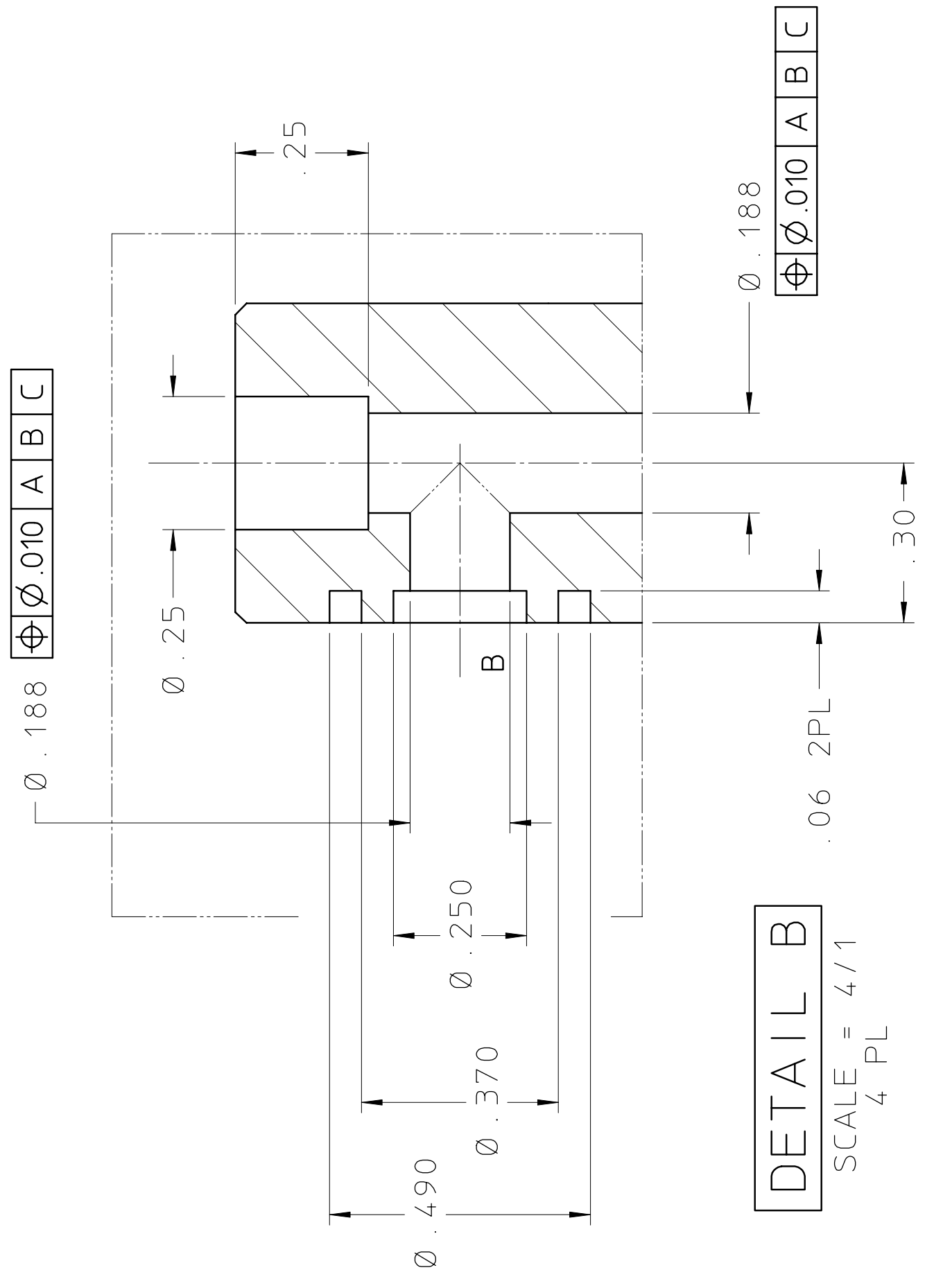


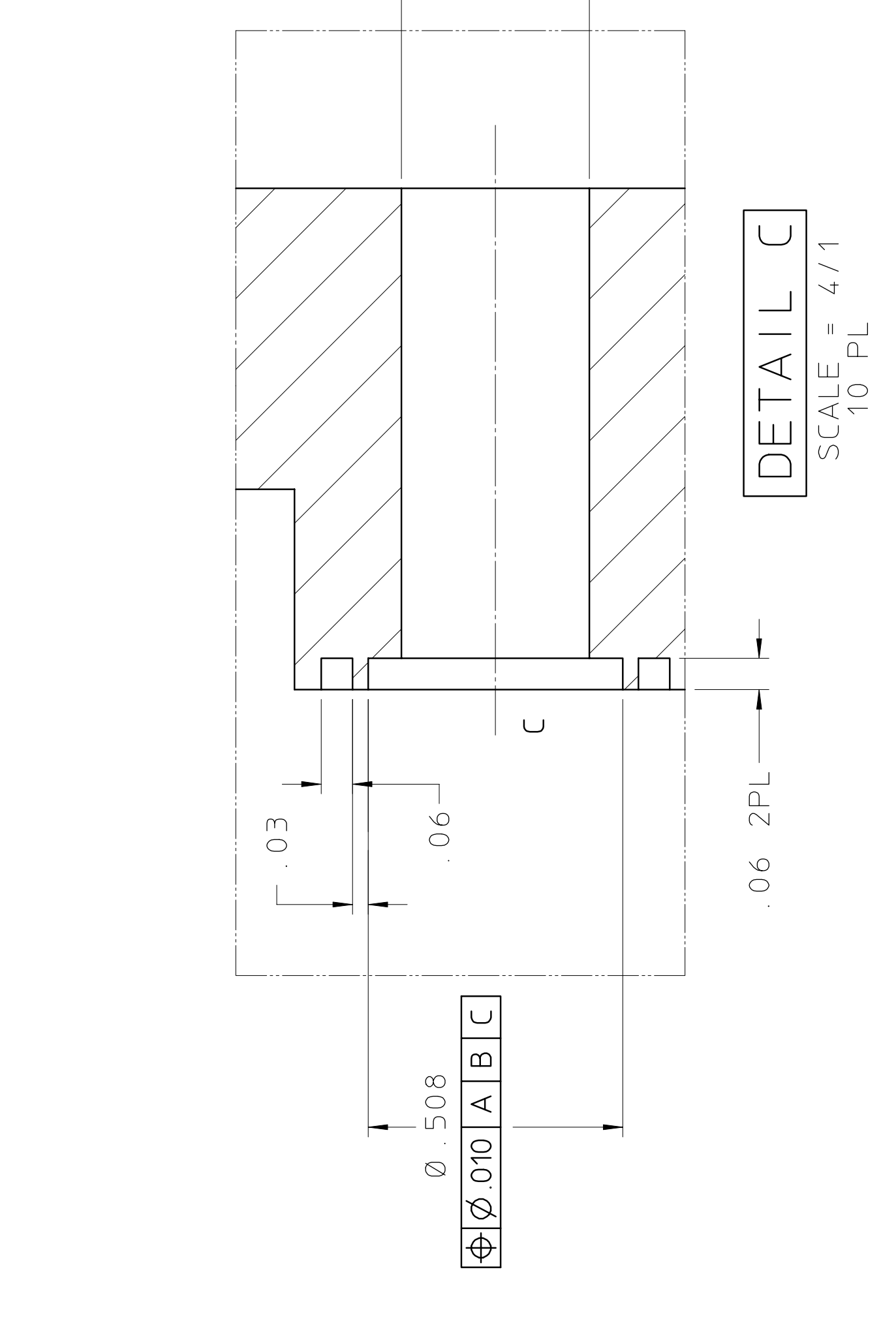
NOTES (UNLESS OTHERWISE SPECIFIED):
 1) DIMENSIONS IN INCHES.
 2) MATL: SST, 304L.



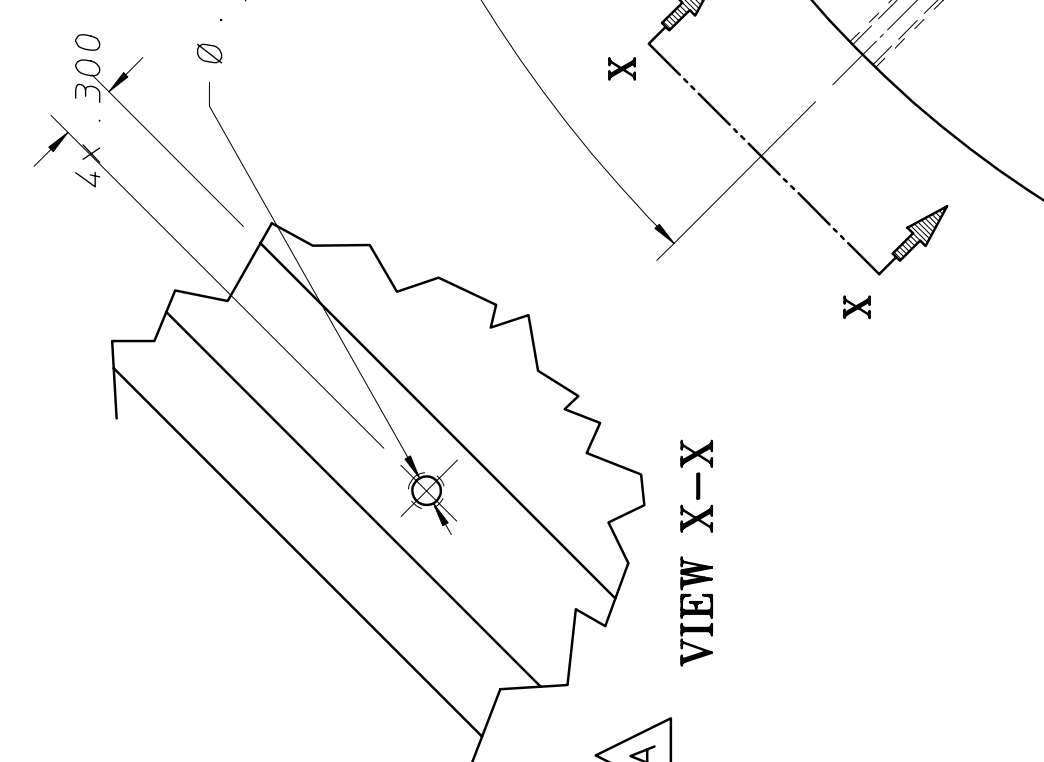
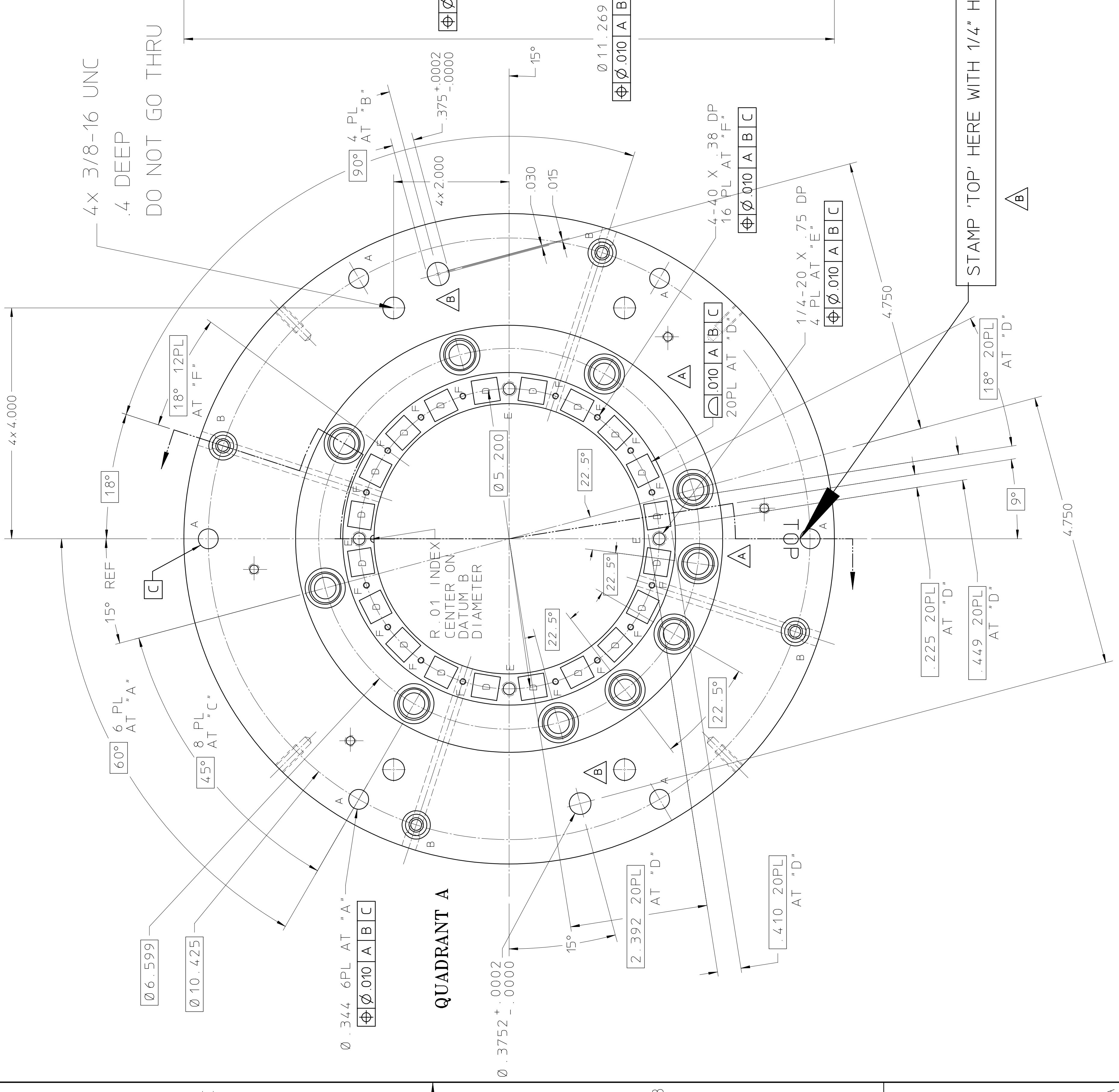
DETAIL OF QUADRANT A



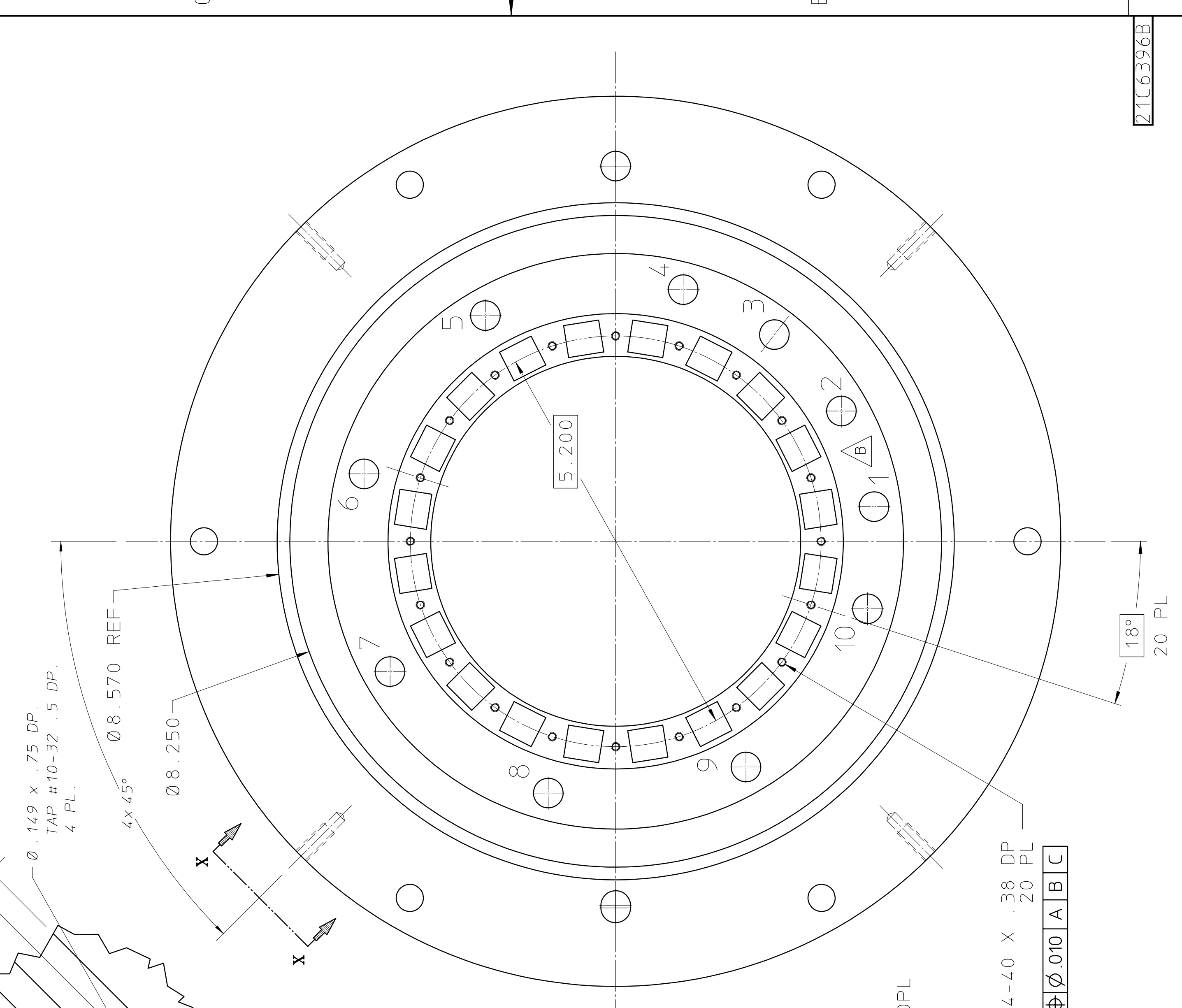
DETAIL B
SCALE = 4/1



DETAIL C
SCALE = 4/1
10 PL



VIEW X-X



QUADRANT A

21C6396B

TECHNOLOGICAL PART NO.		DESCRIPTION	
S1	X = 1	FRAC. # 1764	ACCT
S2	X = 1	ISS	REVISED
S3	X = 1	ISS	REVISED
S4	X = 1	ISS	REVISED
S5	X = 1	ISS	REVISED
S6	X = 1	ISS	REVISED
S7	X = 1	ISS	REVISED
S8	X = 1	ISS	REVISED
S9	X = 1	ISS	REVISED
S10	X = 1	ISS	REVISED
S11	X = 1	ISS	REVISED
S12	X = 1	ISS	REVISED
S13	X = 1	ISS	REVISED
S14	X = 1	ISS	REVISED
S15	X = 1	ISS	REVISED
S16	X = 1	ISS	REVISED
S17	X = 1	ISS	REVISED
S18	X = 1	ISS	REVISED
S19	X = 1	ISS	REVISED
S20	X = 1	ISS	REVISED

CHANGED NUMBERING		DESCRIPTION	
B	4/3/00	REMOVED	REMOVED
B	8/7	ROTTATED	180°
B	8/6	ROTTATED	180°
B	8/5	ROTTATED	180°
B	8/4	ROTTATED	180°
B	8/3	ROTTATED	180°
B	8/2	ROTTATED	180°
B	8/1	ROTTATED	180°
B	8/0	ROTTATED	180°
B	7/29	ROTTATED	180°
B	7/28	ROTTATED	180°
B	7/27	ROTTATED	180°
B	7/26	ROTTATED	180°
B	7/25	ROTTATED	180°
B	7/24	ROTTATED	180°
B	7/23	ROTTATED	180°
B	7/22	ROTTATED	180°
B	7/21	ROTTATED	180°
B	7/20	ROTTATED	180°
B	7/19	ROTTATED	180°
B	7/18	ROTTATED	180°
B	7/17	ROTTATED	180°
B	7/16	ROTTATED	180°
B	7/15	ROTTATED	180°
B	7/14	ROTTATED	180°
B	7/13	ROTTATED	180°
B	7/12	ROTTATED	180°
B	7/11	ROTTATED	180°
B	7/10	ROTTATED	180°
B	7/9	ROTTATED	180°
B	7/8	ROTTATED	180°
B	7/7	ROTTATED	180°
B	7/6	ROTTATED	180°
B	7/5	ROTTATED	180°
B	7/4	ROTTATED	180°
B	7/3	ROTTATED	180°
B	7/2	ROTTATED	180°
B	7/1	ROTTATED	180°
B	7/0	ROTTATED	180°

LAWRENCE BERKELEY NATIONAL LABORATORY
 UNIVERSITY OF CALIFORNIA-BERKELEY
 SNS - FRONT END SYSTEM
 ION SOURCE PROTOTYPE DESIGN
 CUSP MAGNET BODY
 DRAWN BY: []
 DATE: 12-99
 PROJ: []
 SHEET: [] OF []
 8210-14
 21C6396 B