

PRV²SIZE

PRESSURE RELIEF VALVE AND VENT SIZING SOFTWARE

QUICK START GUIDE



Table of Contents

What's included in this document

System Requirements	3
Download Instructions	4
Installation Procedure	5
Terms & Conditions	7
Privacy Agreement & Notice	8
TYCO PRV ² SIZE Registration.	9
Splash Screen.	10
Main Menu	11
Setting Preferences	12
Calculation Type Selection.	13
Sizing and Selection.	14
Configuration	16
Configuration Menu	17
Reports	18
Create a New Tag	19
Tag Library	20
Project Properties.	21
Project / Tag Summary Export.	22
Reference Library	23
Product Catalogs	24
Checking for Updates	25
Submitting Feedback.	26

System Requirements

Minimum and recommended system requirements

Hardware

Minimum:

- Pentium® 4 Processor, 1.3 GHz or better
- 728 MB of RAM
- 1024 x 768 monitor resolution in normal fonts mode and 96 dpi
- 400 MB of free disk space

Recommended:

- Pentium® Core Duo Processor, 1.8 GHz or better
- 1 GB RAM
- 1280 x 1024 monitor resolution in normal fonts mode and 96 dpi
- 500 MB of free disk space
- An internet connection

Operating System

One of the following:

- Windows 2000 Operating System with Service Pack 3
- Windows XP Operating System with Service Pack 2 or 3
- Windows Vista Operating System (32-bit or 64-bit)
- Windows 7 Operating System (32-bit or 64-bit)

TYCO PRV²SIZE software is not supported on Windows Server versions, Windows 98, or Windows ME Operating System.

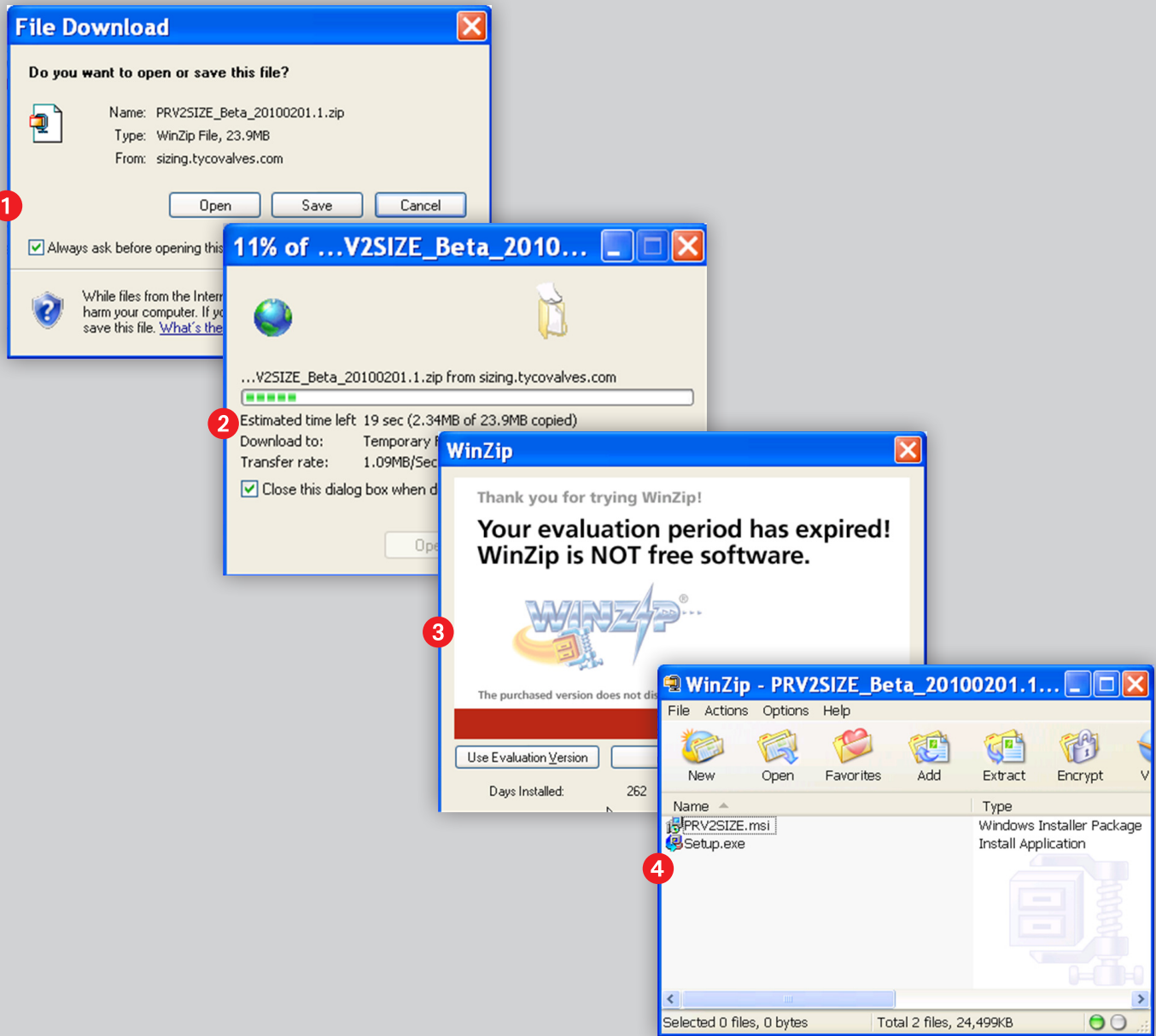
Software

- .NET Framework 2.0
- Adobe Acrobat Reader 5.0 or later (Adobe Acrobat Reader 9.0 is recommended)
- Internet Explorer 6.0 or later or Firefox 2.0 or later

If you do not have the minimum requirements, the TYCO PRV²SIZE program will not install.

If you do not have .NET Framework 2.0, the setup.exe will prompt you to download and install the program from the web.

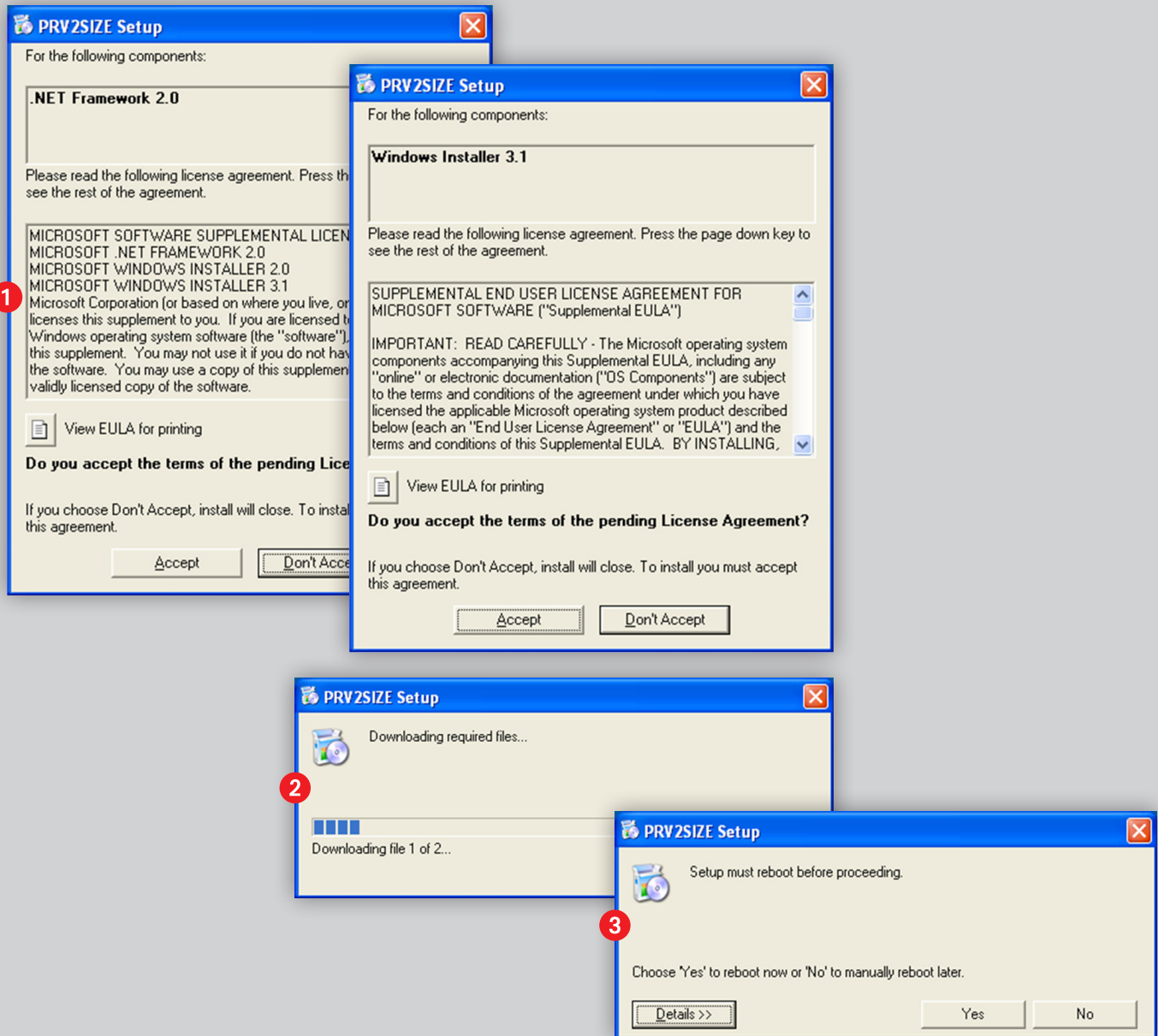
Check the website (sizing.tycovalves.com) for the most up-to-date information.



Download Instructions

You need to open the .ZIP to load the program

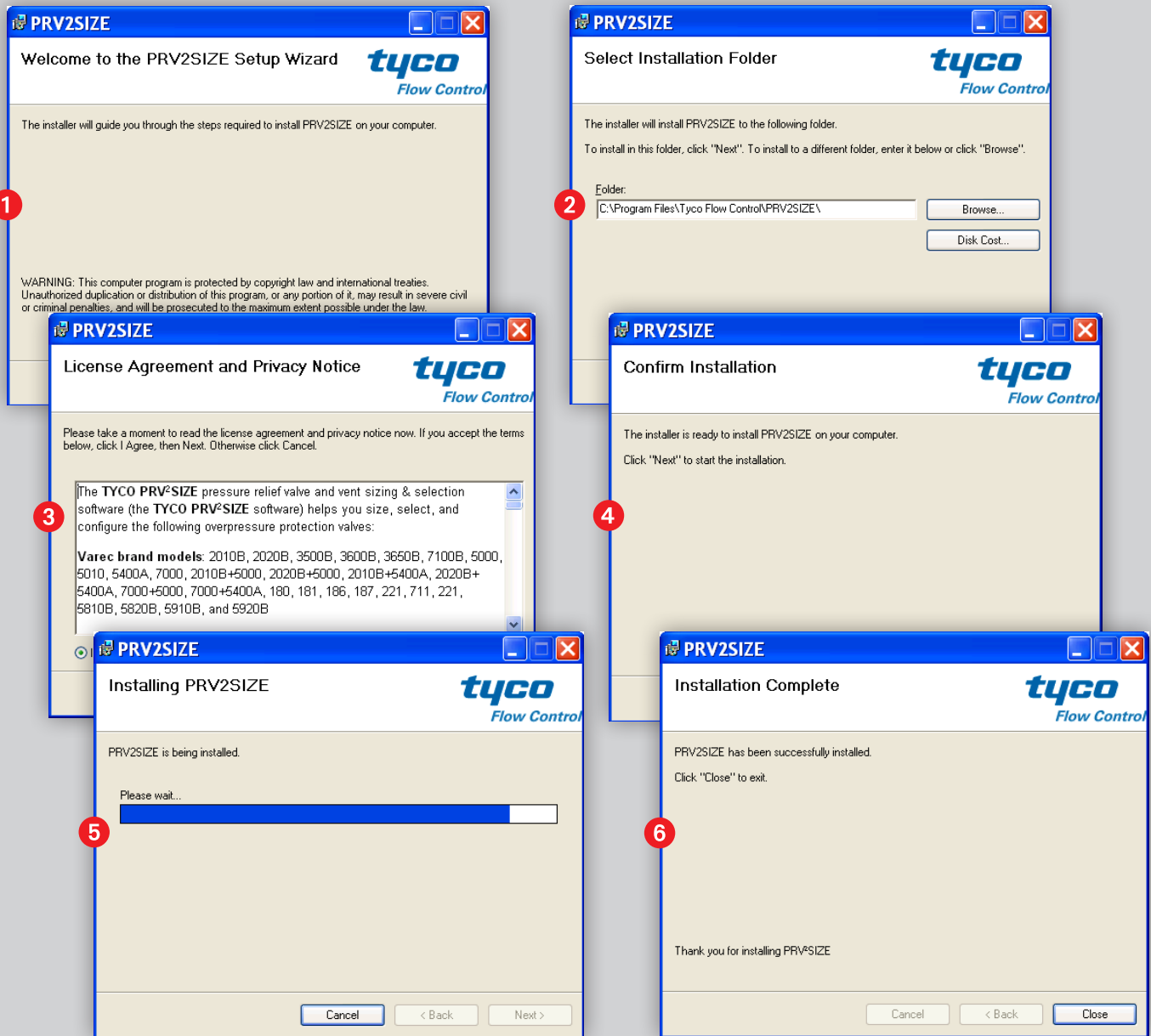
- 1 After clicking the “Download” button, you will have the choice of “Open” or “Save.” “Open” will open the .ZIP file from the web. “Save” will save the .ZIP file to your hard drive and you can open from there.
- 2 Once you click “Open,” the .ZIP file will try to open from the web.
- 3 Your .ZIP extraction software will try to open the .ZIP file.
- 4 Double-click SETUP.EXE to begin the installation process.



Installation Procedure

Installation searches for .NET on your computer

- 1** You must run the SETUP.EXE file in order to check for the .NET framework during installation. If the setup process does not find the .NET framework, you will see these screens to prompt you to download the .NET framework to your computer.
- 2** When the download and install for .NET is complete, you might need to reboot. When the computer boots,
- 3** TYCO PRV²SIZE setup will automatically resume and complete the TYCO PRV²SIZE software installation. If you choose “No” (to reboot later), then you will have to reboot your computer at a later time to complete the TYCO PRV²SIZE software installation. Once you reboot, you will need to run SETUP.EXE again for the installer to continue installing TYCO PRV²SIZE software.



Installation Procedure

Follow the on-screen instructions for installation

The TYCO PRV²SIZE software is now loaded and you will find the program icon on your desktop.



Terms & Conditions

The TYCO PRV²SIZE pressure relief valve and vent sizing & selection software (the TYCO PRV²SIZE software) helps you size, select, and configure the following overpressure protection valves:

Varec brand models: 2010B, 2020B, 3500B, 3600B, 3650B, 7100B, 5000, 5010, 5400A, 7000, 2010B+5000, 2020B+5000, 2010B+5400A, 2020B+5400A, 7000+5000, 7000+5400A, 180, 181, 186, 187, 221, 711, 221, 5810B, 5820B, 5910B, and 5920B

Anderson Greenwood brand models: 93, 95, 9200V, 9209V, 9240C, 9290C, 9290P, 9299C, 9300V, 9309V, 9340C, 9390C, 9390P, 9399C, 9240C, 81, 83, 86, 81P, 253, 243, 263, 453, 443, 463, 853, 843, 863, 259, 249, 269, 546, 566, 727, 61, 63, 5146, 5166, RAR, BV, Y1R, MLCP, and LCP

Crosby® brand models: 900, 800, JOS-E, JLT-JOS-E, JOS-H-E, JB, HCI, HSJ, HE, HL, JBS-E, JLT-JBS-E, JBS-BP-E, JLT-JBS-BP-E, and BP

Tyco Flow Control, Inc. (TFC) provides the information herein in good faith but makes no representation as to its comprehensiveness or accuracy. This software is intended only as a guide to TFC products and services. Individuals using this software must exercise their independent judgment in evaluating product selection and determining product appropriateness for their particular purpose and system requirements. TFC and its parent, subsidiaries, and affiliates assume no liability in any way whatsoever for any direct or indirect loss or damage through the application of the TYCO PRV²SIZE software. The TYCO PRV²SIZE software is not for resale.

TFC worked extensively to test for and fix errors in the TYCO PRV²SIZE software and while the program's technical information and calculations are believed to be reliable, their accuracy is not guaranteed. Also, not every combination of software and hardware can be tested. If you experience any problems in the TYCO PRV²SIZE software send them via the "Send Us Feedback" function on the program menu bar or contact your company representative.

The TYCO PRV²SIZE software's algorithms, calculations, codes / standards used, features and products referenced are subject to constant change. It is expected that you will regularly check for updates of this program to keep it current. If your computer is connected to the internet the program will check for updates when the program is launched. Alternatively, you can use the "Check for Updates" command from the Help menu any time the program is open and the computer is connected to the internet. Finally, you can also check this program's website at <http://sizing.tycovalves.com/> or contact the company's representative.

DRAWINGS – Any drawings submitted herewith are agnostic in nature and only to show the general style, arrangement, and approximate dimensions of the products offered. No work is to be based on drawings unless the drawings are certified. In no event will manufacturing drawings, proprietary drawings, or drawings requiring US export license / authorization be supplied.

You are prohibited from modifying, translating, reverse engineering, decompiling, or disassembling the TYCO PRV²SIZE software, and from creating derivative works based on the TYCO PRV²SIZE software..

This TYCO PRV²SIZE software program will not be used for or in association with any purpose that violates US export law.

TFC MAKES NO REPRESENTATIONS OR WARRANTIES, EITHER EXPRESS OR IMPLIED, INCLUDING WITHOUT LIMITATION ANY WARRANTIES OF MERCHANTABILITY OR FITNESS FOR A PARTICULAR PURPOSE WITH RESPECT TO THE USE OF THIS SOFTWARE PROGRAM, THE USE OF THE RESULTS, INFORMATION SET FORTH HEREIN OR THE PRODUCT(S) TO WHICH THE INFORMATION REFERS. ACCORDINGLY, TFC WILL NOT BE RESPONSIBLE FOR DAMAGES (OF ANY KIND OR NATURE, INCLUDING INCIDENTAL, INDIRECT, OR CONSEQUENTIAL DAMAGES) RESULTING FROM THE USE OF OR RELIANCE UPON THIS INFORMATION, SOFTWARE PROGRAM, OR ANY INFORMATION RESULTING FROM THE USE OF THIS SOFTWARE PROGRAM. Tyco reserves the right to change software and/or product designs and specifications without notice.

Intellectual Property Information

TYCO PRV²SIZE is a trademark of Tyco Flow Control, Inc. Copyright © 2010 Tyco Flow Control, Inc. All rights reserved. All trademarks, trade names and/or registered trademarks referred to in this program are the property of their respective owners.

Privacy Agreement & Notice

Privacy Notice

Tyco Flow Control (TFC) is committed to protecting any personal information that you may provide to us. Furthermore, TFC recognizes the importance of informing you how we treat information about you that we may receive from this site.

In general, you must have an established user name and password in order to download software from the sizing website. Our servers may collect the domain names, E-mail addresses, and first and last names of visitors. In addition, there are portions of the sizing website where we may need to collect personal information from you for a specific purpose, such as to provide you with certain information you request. The information collected from you may include your name, address, telephone, fax number, or E-mail address. You may refuse any request for personal information.

All website registration information is stored on a secure server unavailable to anyone outside of Tyco Valves & Controls LP. We may use this information for statistical, demographic, marketing and/or transaction purposes, and to better understand the make-up of our customer base so we can improve our services consistent with our visitors' interests. We may also use it to contact Tyco Valves & Controls LP website visitors occasionally to ensure their satisfaction with Tyco Valves & Controls LP products and services, and to notify them about important and timely information and features related to the Web service or Tyco Valves & Controls LP products.

None of the website registration information is ever provided to third-party organizations in other than aggregate statistical form. The information is regarded and treated by Tyco Valves & Controls LP as confidential business information for its internal use only. We monitor traffic patterns on our websites, but only to the extent appropriate to help us achieve our goal of providing a site that meets or exceeds the needs of our customers. We use cookies only to implement the site security features, which enables visitors to visit the website pages without re-entering their login "Name" and "Password."

The TYCO PRV²SIZE pressure relief valve and vent sizing & selection software (the TYCO PRV²SIZE software) requires registration to use the program. This feature is only used internally to track the people using the program for the sole purpose of notification in the event that there is an important update. This information is treated as confidential business information for internal use only and it will not be sold to any third parties for any reason. Additionally, some other specific information is captured during the registration process that gives us more information about your computer configuration. This data is collected so that we can better understand our customers' working environment so that we can cater our

development towards the most common screen resolutions, language settings, etc. This information is only regarding user settings and visualization settings such as screen resolution, DPI, language, localization settings and font size. In the event of a support call for help with this program we may elect to review your registration settings with our development team and software development contractors to resolve your issue and replicate your environment. The TYCO PRV²SIZE software also contains a feature by which the user can elect to send a "bug report" or "suggestion" to TFC from within the program. If the user elects to do this, the following information will be passed to Tyco and kept in a software "issues" database:

- User name, user E-mail address, user phone number, and problem description the user elects to enter
- Log file(s) to assist in debugging, which may include information about:
 - Program version
 - OS version and service pack
 - .NET Runtime version
 - Computer name, domain name (if any), currently logged-in user name
 - Amount of memory, CPU speed
 - Current language and regional settings of the OS
 - Paths to the configuration and settings files on the computer
 - Path to the tag and valve database being used
 - Any information generated as part of a program error, which could include the name of the current tag, any values entered as part of sizing, selected model, and/or any options selected during configuration. Although it is not part of the main logging process, the tag's name, company and project information could be included in the log file during error logging.
- Additionally, if the user elects to include their tag database with the report then TFC has FULL ACCESS to all tags and information in that submitted tag database.

Finally, the TYCO PRV²SIZE software also contains a feature by which the program will check for updates to the program each time the software is launched. In order to do this, the program makes a connection to TFC's sizing server to download a file that describes available updates. The user's IP address is read in order to enable this update download.

1

Registration - PRV²SIZE

Please register in order to receive critical updates to the program.

Please provide complete information.

First Name

Last Name

Email

Phone

Company

Mailing Address
Please enter your entire mailing address, using as many lines as needed. Include address, street, city, state/region, and postal code.

Country

[This information is subject to our privacy policy. Click here to read.](#)

Register now Remind me in

2

PRV²SIZE
PRESSURE RELIEF VALVE AND VENT SIZING SOFTWARE

Software Registration Card

Registration Information

Name: _____

Company: _____

Address: _____

City: _____

State: _____ Postal Code: _____

Country: _____

Phone: _____

E-mail: _____

For users who receive a CD and do not have an Internet connection, please complete and return this pre-paid registration card to allow Tyco Flow Control to send you a new CD as updates occur.

<http://sizing.tycovalves.com>

tyco Flow Control

Copyright © 2009 by Tyco Flow Control, Inc. (TFC). All rights reserved. All trademarks are the property of their respective owners.

TYCO PRV²SIZE Registration

Register your program to receive updates

1 Once your software is installed, please fill out the registration information. This allows us to send user group notifications and program updates.

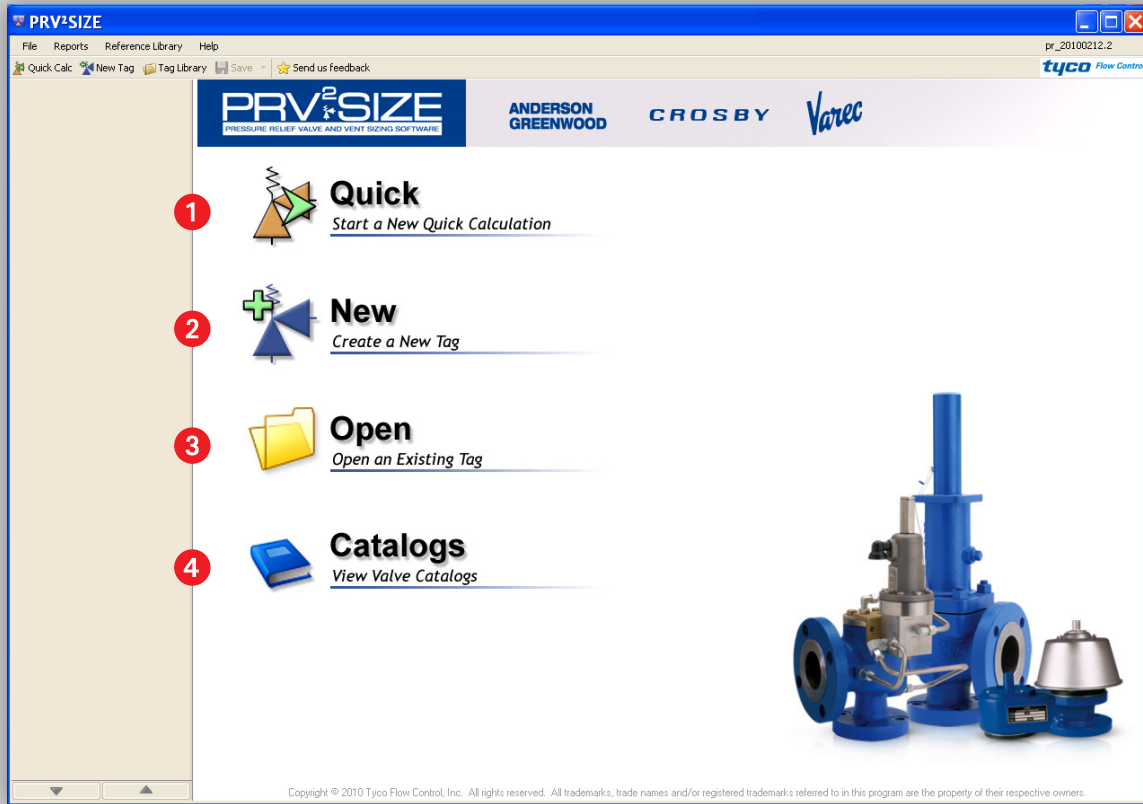
2 If you loaded the program from a CD and will not have internet access that allows the automatic “check for updates” feature (see page 25), you must register as a user via the registration card. This will allow us to send you user group notifications and a new CD when the program is updated.



Splash Screen

Version and build information

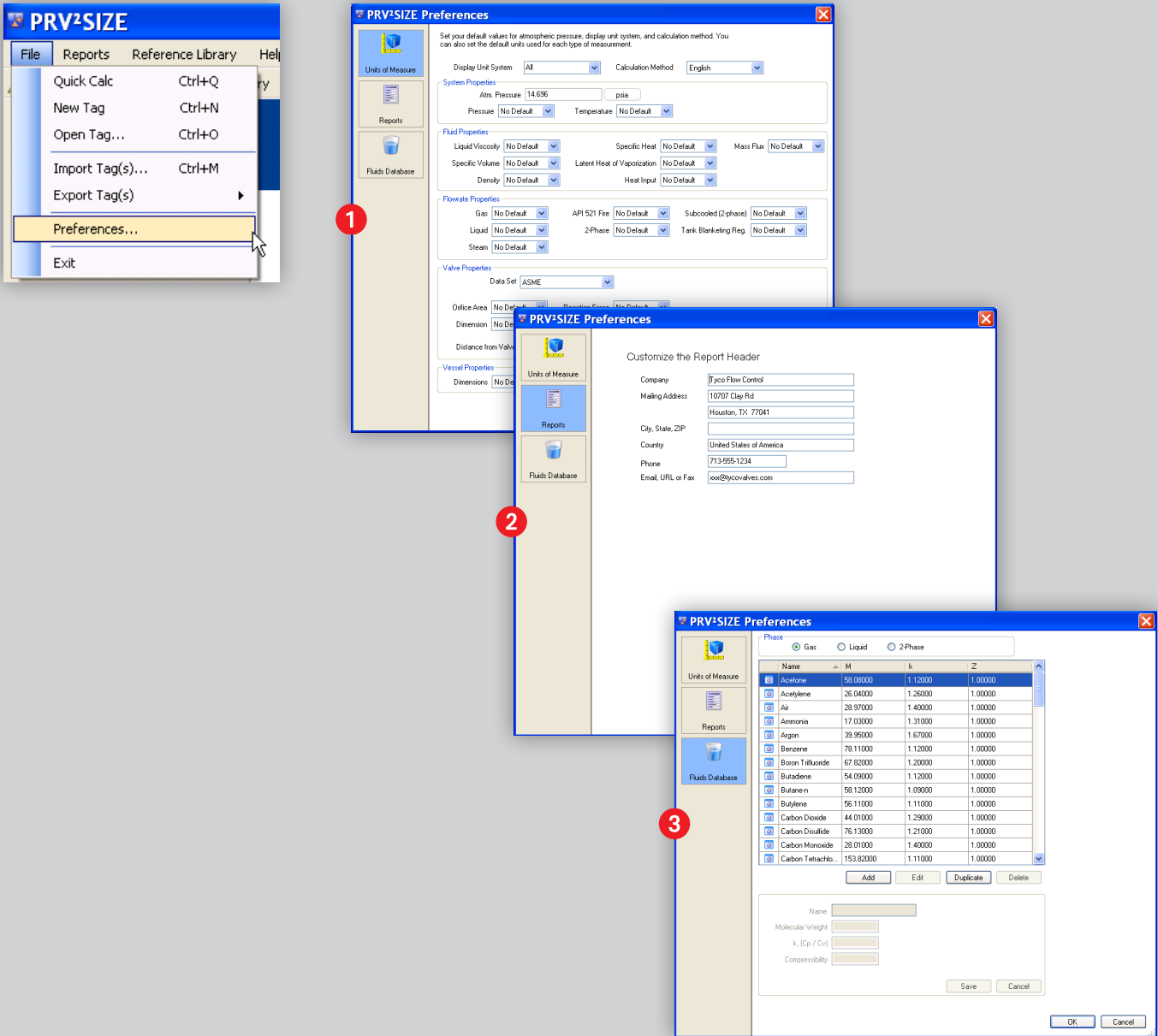
- 1 Wait for application to load. Progress is indicated by “...” after “Loading.”



Main Menu

Main options for application, choose a path

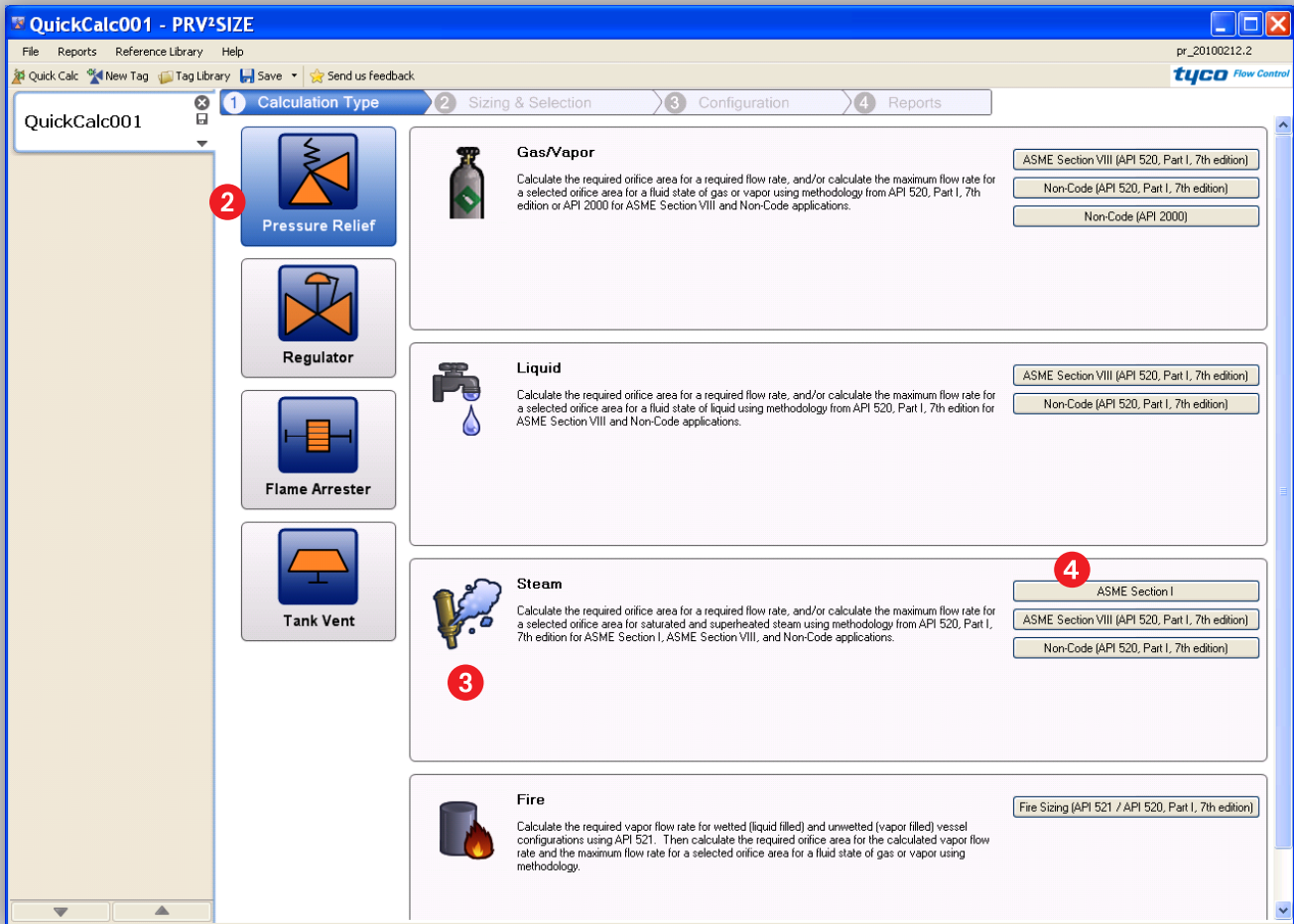
- 1 Quick size a valve. Go directly to sizing a valve without assigning a project, company or saving it first. Valve can always be saved later.
- 2 Create a new tag by establishing the company, project and properties prior to sizing and selection.
- 3 Open an existing tag. Browse the database for previously saved tags and projects.
- 4 View a valve catalog. Open catalog library to select a PDF catalog.



Setting Preferences

Changing default units, report header and fluids

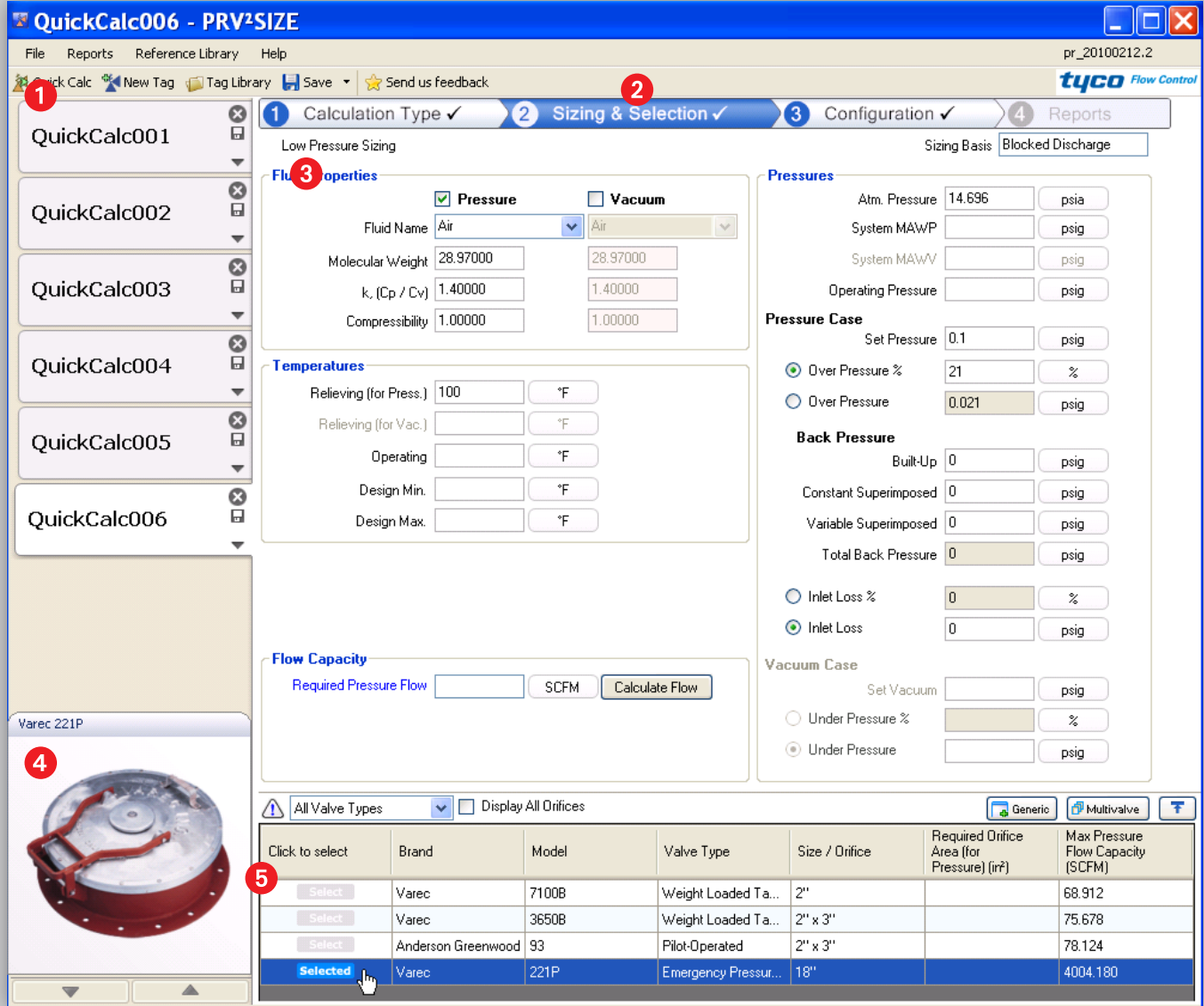
- 1 You can set up your global default units for any *new tag* to be created in the program. Changing your global default units will not change the units in tags that have already been created.
- 2 You can customize the information that appears on the report headers.
- 3 You can create your own custom fluids for use in the program.



Calculation Type Selection

Selecting needed valve type and sizing methodology

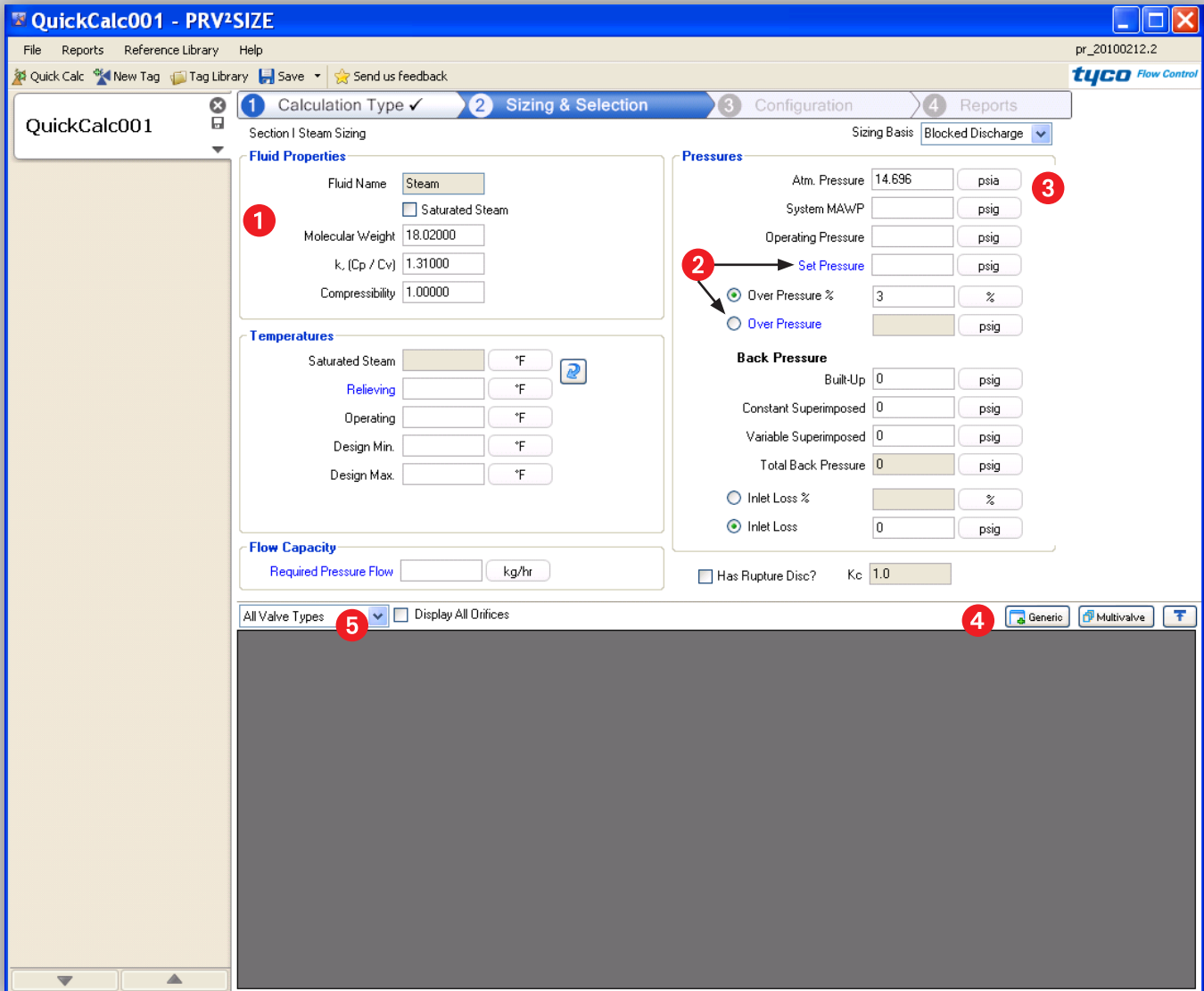
- 1 Click on this function to launch the screen below.
- 2 Choose a valve category to display the sizing options on the right.
- 3 Click in the sizing option description to enable the sizing methodology options.
- 4 Click the sizing methodology option button to start the sizing calculation.



Sizing and Selection

Screen layout for sizing and selection criteria

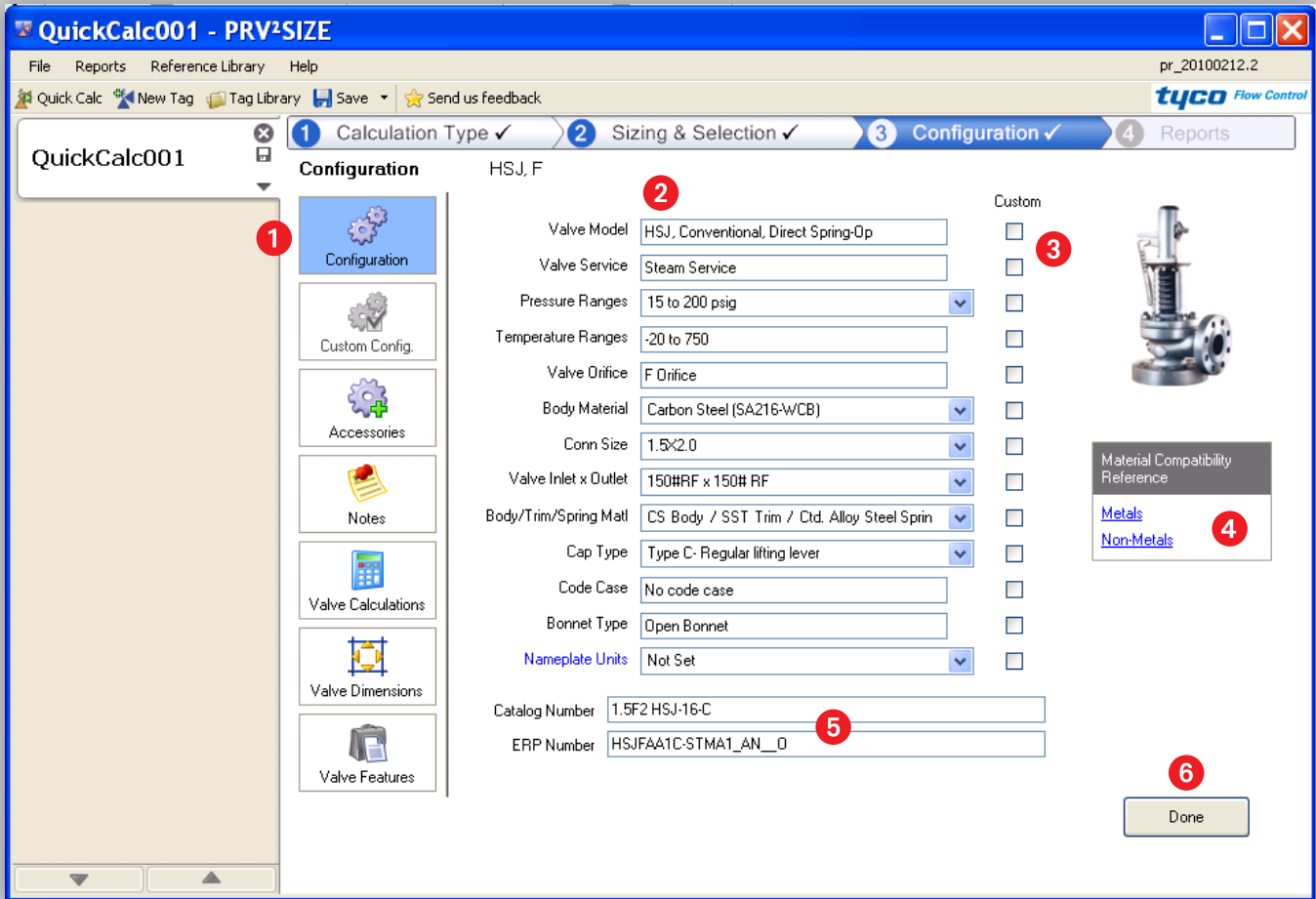
- 1 All open tags being worked on are listed on the left; click to toggle between the tags. Close and Save can be done for each tag using the icons.
- 2 Workflow stage menu for the current tag. Each stage is enabled as the previous stage is completed. Check mark indicates the stage is completed; grayed-out stages are “not actionable” at this point. Click a stage to navigate between completed stages.
- 3 Sizing input values required for this type of valve.
- 4 Valve image. Displays a picture of the valve as you drag over the grid values in section 5 to display that valve.
- 5 Valve list that satisfies the input criteria from Section 3. Click the “Select” button for the desired valve on this list to proceed to configuration.



Sizing and Selection

Input values required to calculate eligible valves

- 1 Input fields are grouped into like sections.
- 2 Required fields are highlighted in blue.
- 3 Change units by clicking the unit button for a list.
- 4 Generic sizing, multi-valve sizing and “Snap” tool which expands / collapses valve list for more / less screen space.
- 5 Filter options for showing / hiding valves in the list.



Configuration

Configuration options for valve

- 1 Configuration menu options. Click to view options for each section. (See the next page for details.)
- 2 Option choices. Select dropdown options. Items grayed out are not available but can be selected to create a customized non-standard configuration.
- 3 Click the “Custom” checkbox to override any value and put your custom value in its place.
- 4 View PDF with Material Compatibility References.
- 5 Dynamically created Catalog Part Number is based on configuration selections. ERP Number is a part number recognized by the IT System at the factory.
- 6 Click “Done” to generate a report for your valve.

Configuration

Custom Config.

Accessories

Notes

Valve Calculations

Valve Dimensions

Valve Features

1. Detailed configuration menu

2. Allowable accessories to select for the valve.

3. Input free-text notes that you want to include on the tag.

4. Reaction force and noise levels provided for the valve.

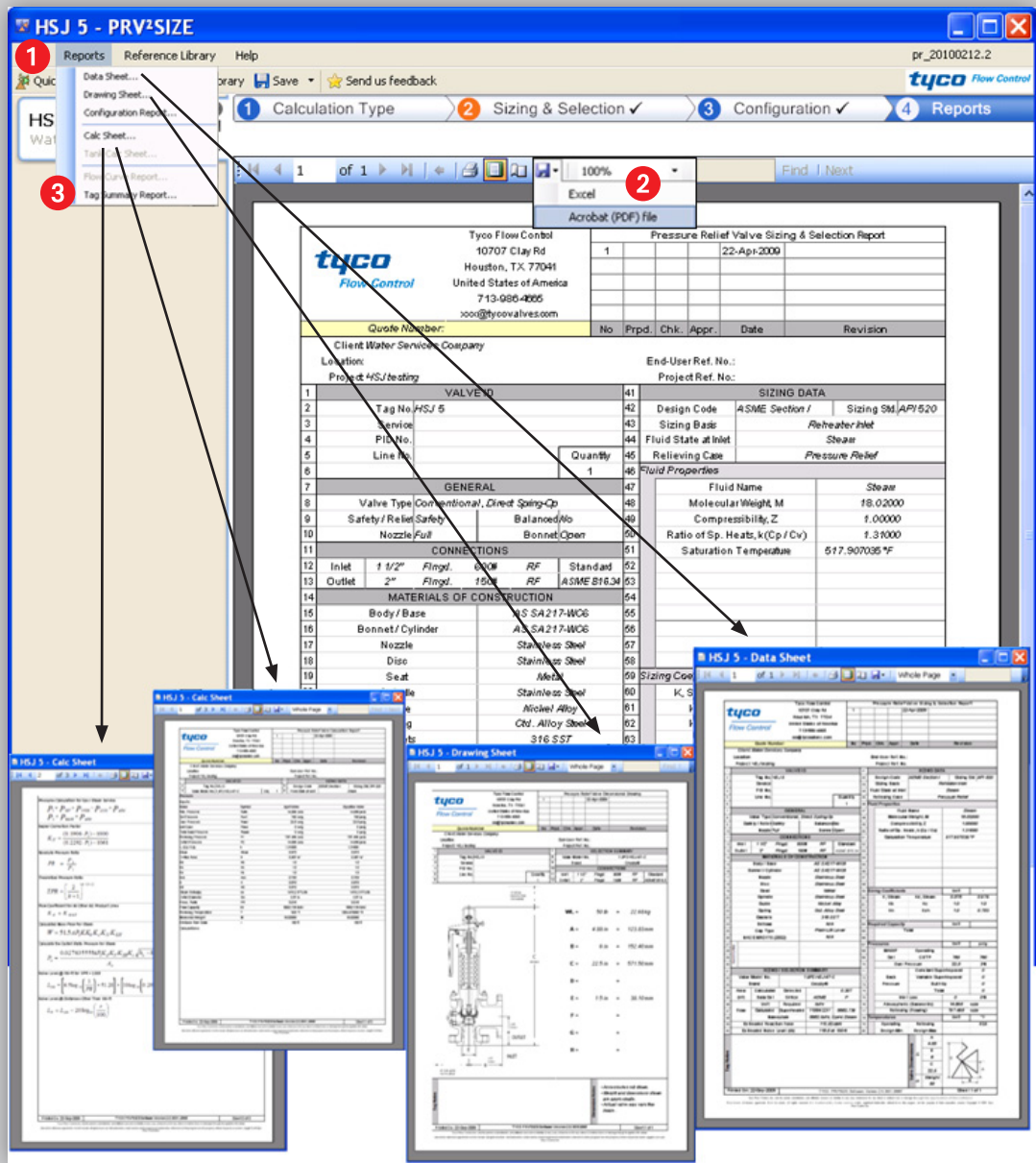
5. Catalog dimensions for the valve.

6. Summary feature list and image for the valve you are configuring.

Configuration Menu

Options for configuration

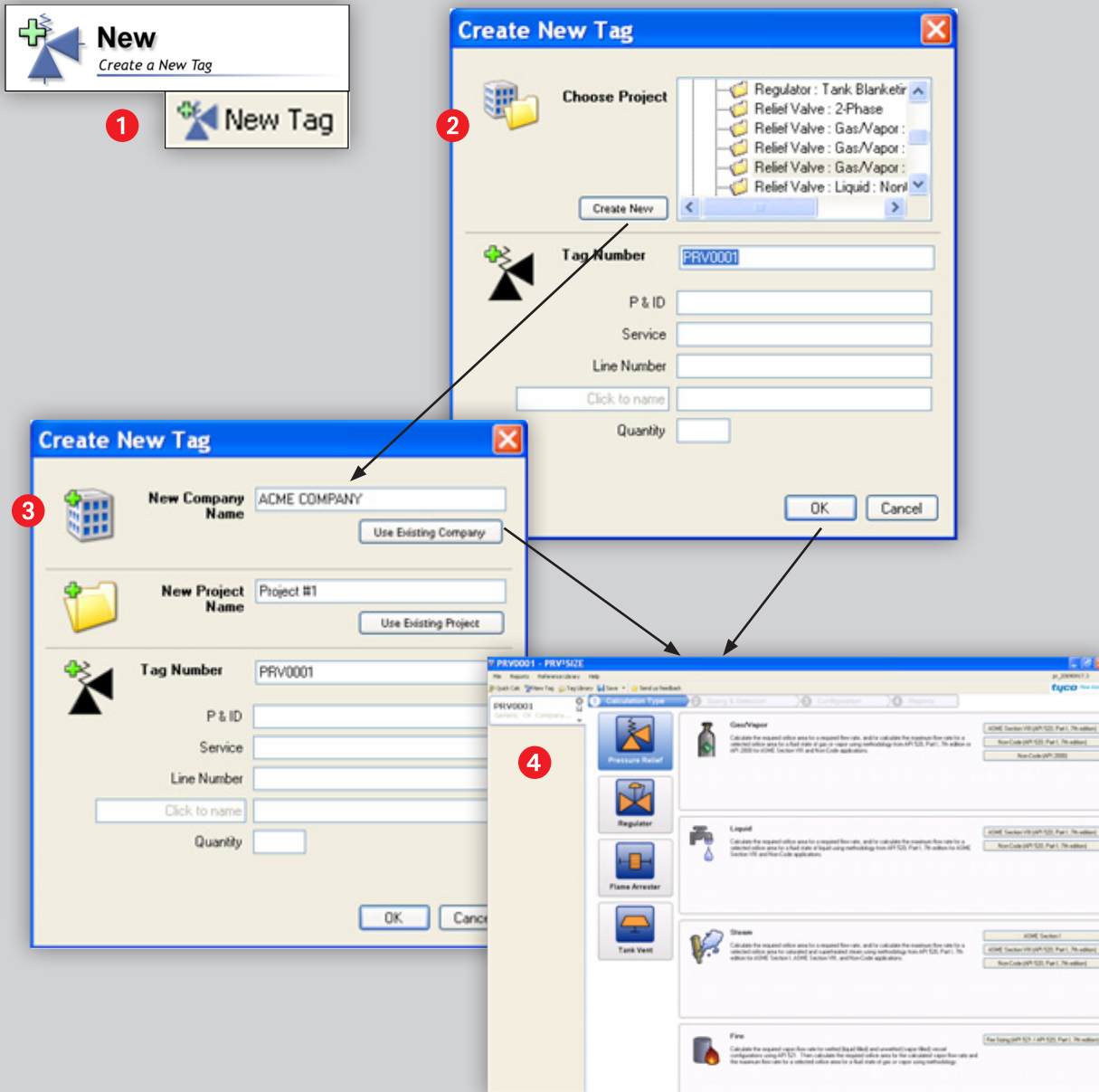
- 1 Your detailed configuration menu.
- 2 Allowable accessories to select for the valve.
- 3 Input free-text notes that you want to include on the tag.
- 4 Reaction force and noise levels provided for the valve.
- 5 Catalog dimensions for the valve.
- 6 Summary feature list and image for the valve you are configuring.



Reports

Project Summary Report, and other reports

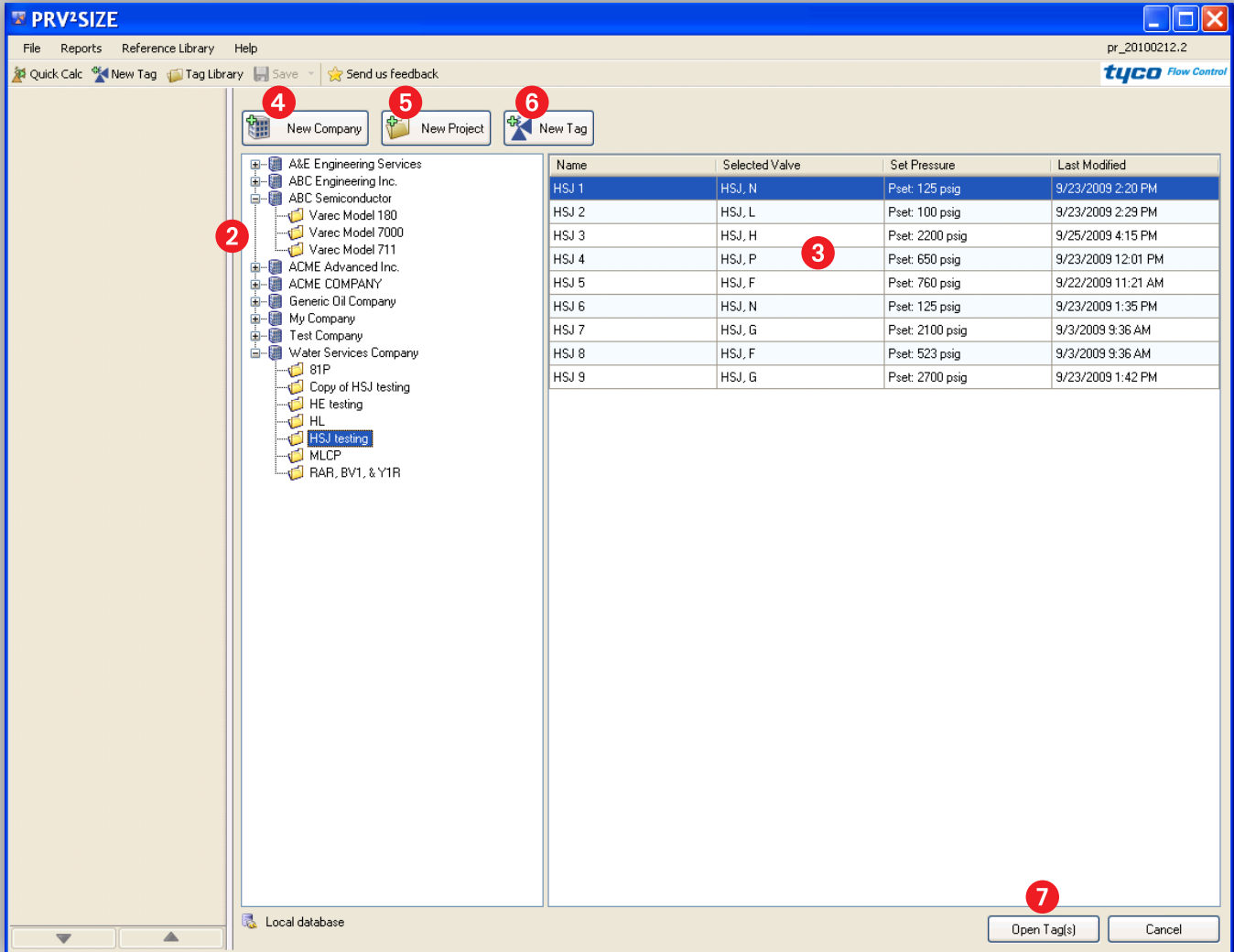
- 1 Click "Reports" menu to show other available reports.
- 2 Save reports to Acrobat PDF file, or Excel. PDF is highest quality.
- 3 The Tag Summary Report will combine all of the individual reports into one document for the tag.



Create a New Tag

Giving a tag more initial identity than a quick-calc

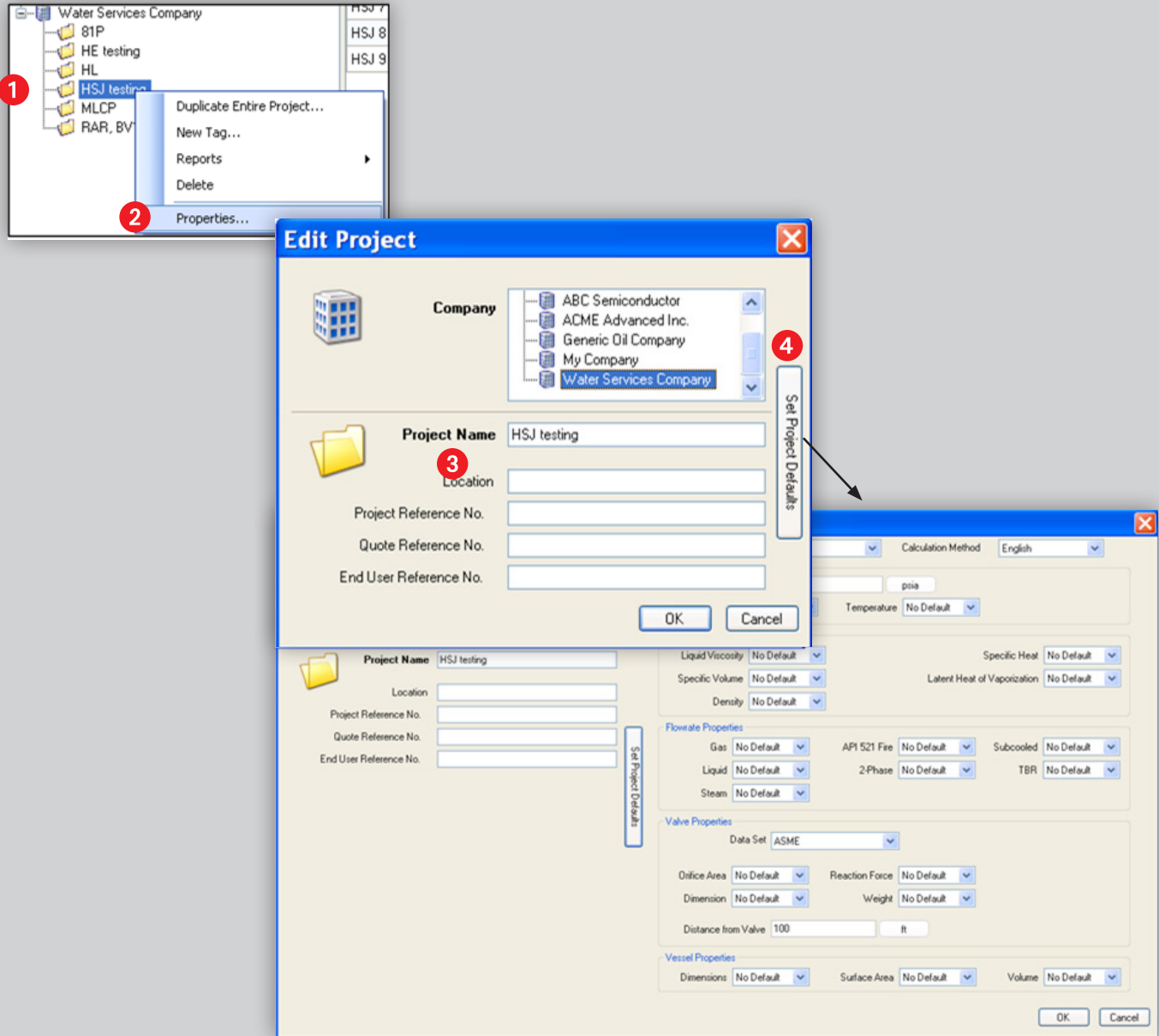
- 1 Click on either of these icons to launch a new tag.
- 2 When you choose to launch a new tag, you can immediately associate the tag with a customer and project.
- 3 You can also choose to create a new company and/or project name as well.
- 4 Either way, your next step is to select the valve category and sizing methodology, just like quick-calc.



Tag Library

Manage tags. Open, create, categorize

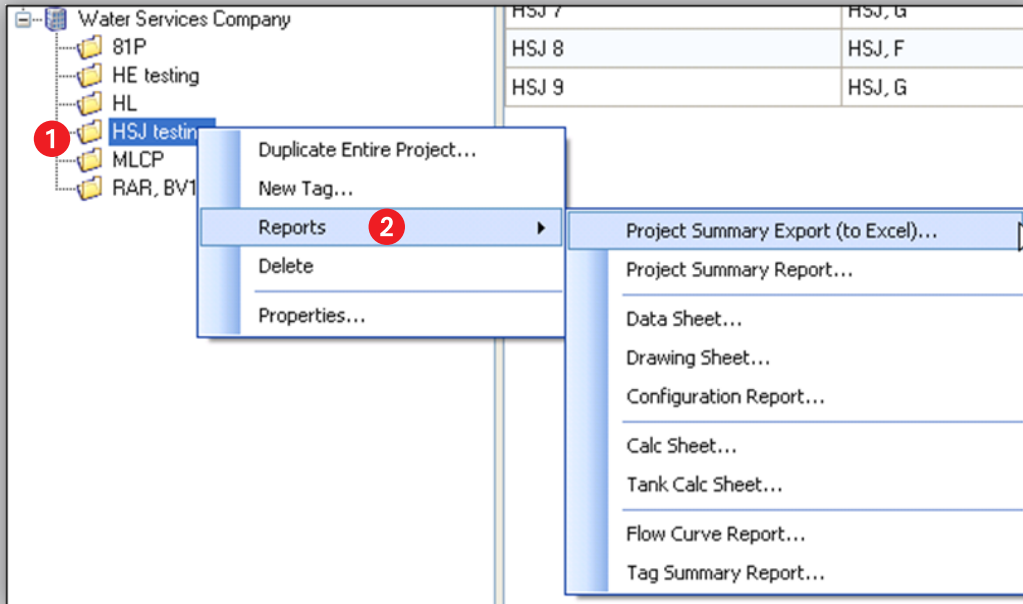
- 1 Click on either of these icons to launch your tag library.
- 2 Library tree has a listing of companies and projects associated with these companies.
- 3 Tag grid has a listing of all tags in the particular project you have selected. Double-click a tag to open it.
- 4 Create a new company.
- 5 Create a new project.
- 6 Create a new tag.
- 7 Click on one or more tags in the grid and select the "Open Tag(s)" button to open multiple tags.



Project Properties

Specific settings can be changed for projects

- 1 To adjust the properties of a project, right-click on the project.
- 2 Select “Properties” to launch the “Edit Project” dialog box below.
- 3 Change the listed properties for the project.
- 4 Click “Set Project Defaults” to expand the window in order to change unit defaults for any *new tag* to be created in the project. Changing the units default in a project will not change units on previously created tags in that project.

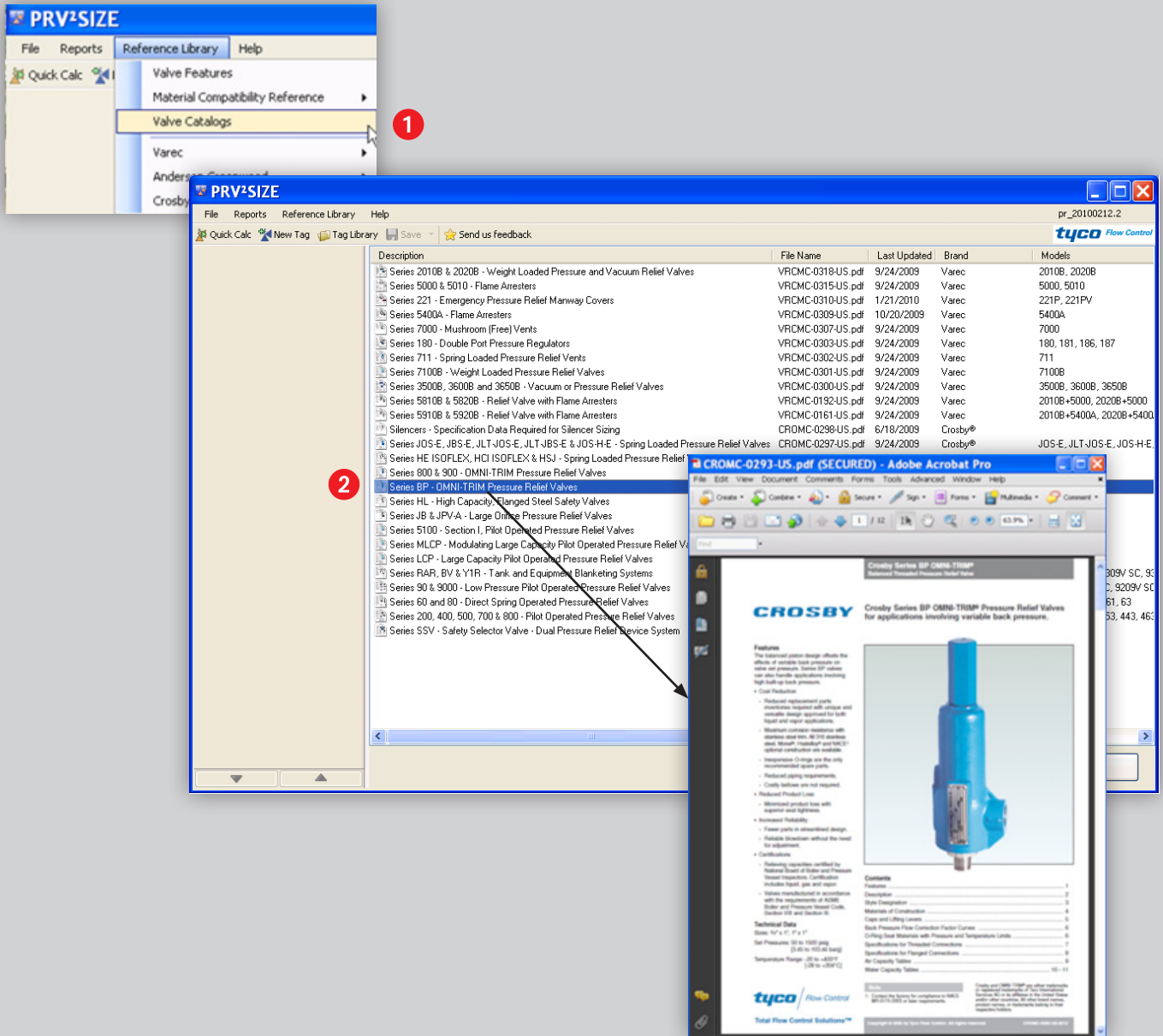


Company Name	Project Name	Tag Number	P & ID	Calculation Method	Valve Type	Model - Size / Orifice	Catalog Number	Sizing Basis	Fluid State - Pressure	Fluid State - Vacuum	Fluid Name - Pressure
Water Services Company	HSJ testing	HSJ 1		English	ReliefValve	HSJ, N	4N6 HSI-46-C	LP Drum	Steam		Steam
Water Services Company	HSJ testing	HSJ 2		English	ReliefValve	HSJ, L	3L4 HSI-56-C-SPL	LP Superheater	Steam		Steam
Water Services Company	HSJ testing	HSJ 3		English	ReliefValve	HSJ, H	2H3 HSI-66-D-SPL	Economizer	Steam		Steam
Water Services Company	HSJ testing	HSJ 4		English	ReliefValve	HSJ, P	4P6 HSI-46-D-SPL	Economizer	Steam		Steam
Water Services Company	HSJ testing	HSJ 5		English	ReliefValve	HSJ, F	1.5F2 HSI-47-C	Reheater Inlet	Steam		Steam
Water Services Company	HSJ testing	HSJ 6		English	ReliefValve	HSJ, N	4N6 HSI-16-C	LP Drum	Steam		Steam
Water Services Company	HSJ testing	HSJ 7		English	ReliefValve	HSJ, G	1.5G2.5 HSI-67-C	Blocked Discharge	Steam		Steam
Water Services Company	HSJ testing	HSJ 8		English	ReliefValve	HSJ, F	1.5F2 HSI-37-C-SPL		Steam		Steam
Water Services Company	HSJ testing	HSJ 9		English	ReliefValve	HSJ, G	2G3 HSI-76-C-SPL	HP Superheater	Steam		Steam

Project / Tag Summary Export

Export summary information to Excel

- 1 Right-click on your project.
- 2 Select "Reports," then select "Project Summary Export (to Excel)."
- 3 The Excel file that is saved to your hard drive will have tag information arranged by line for use in quotes or tables (note: picture does not show all of the exported fields).

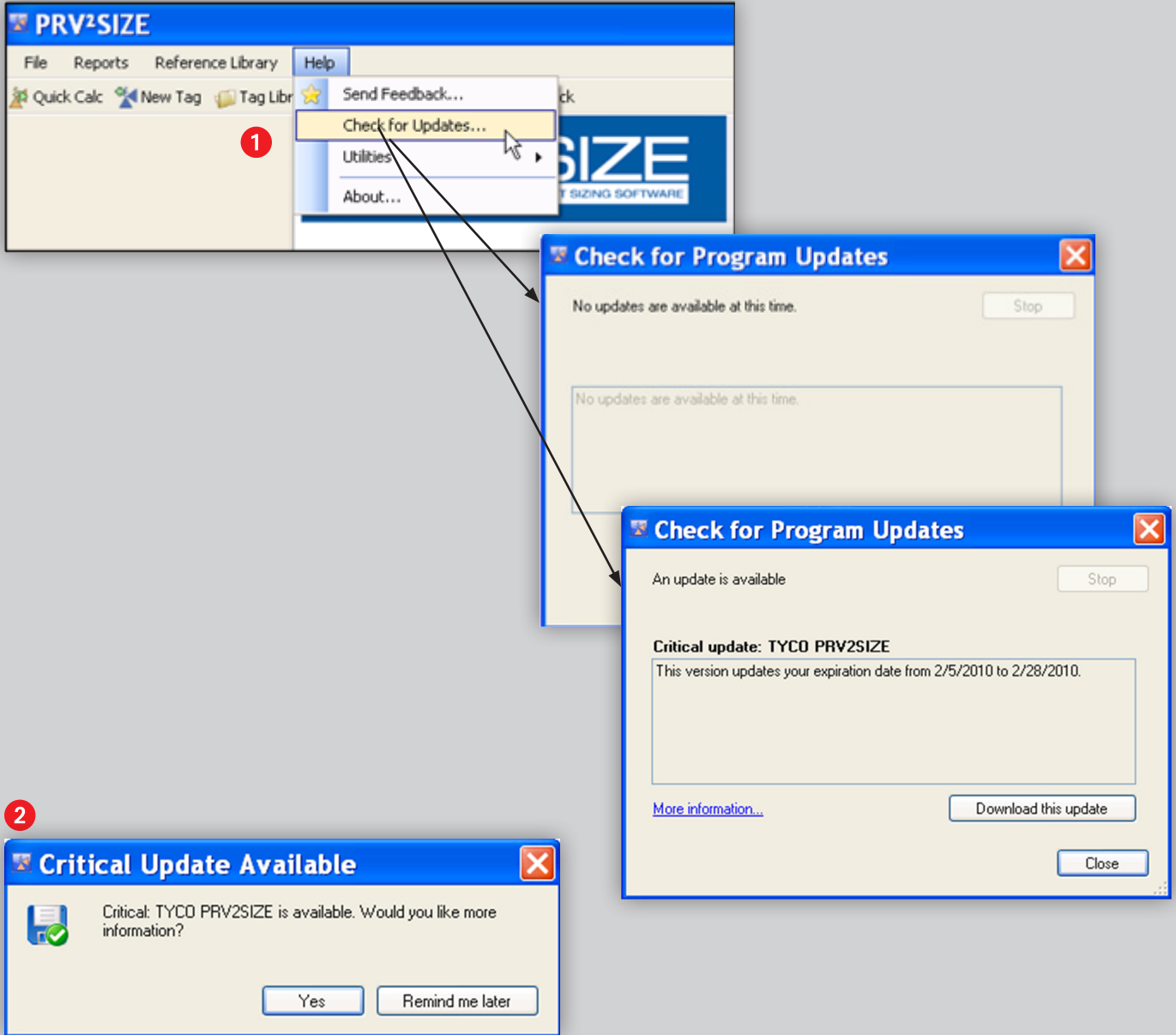


Product Catalogs

View the product catalogs in the program

If you download the optional catalog file, you will be able to view the product catalogs from the program.

- 1 Under "Reference Library," select "Valve Catalogs."
- 2 Simply double-click on any of the catalog icons and the product catalog .pdf file will launch.



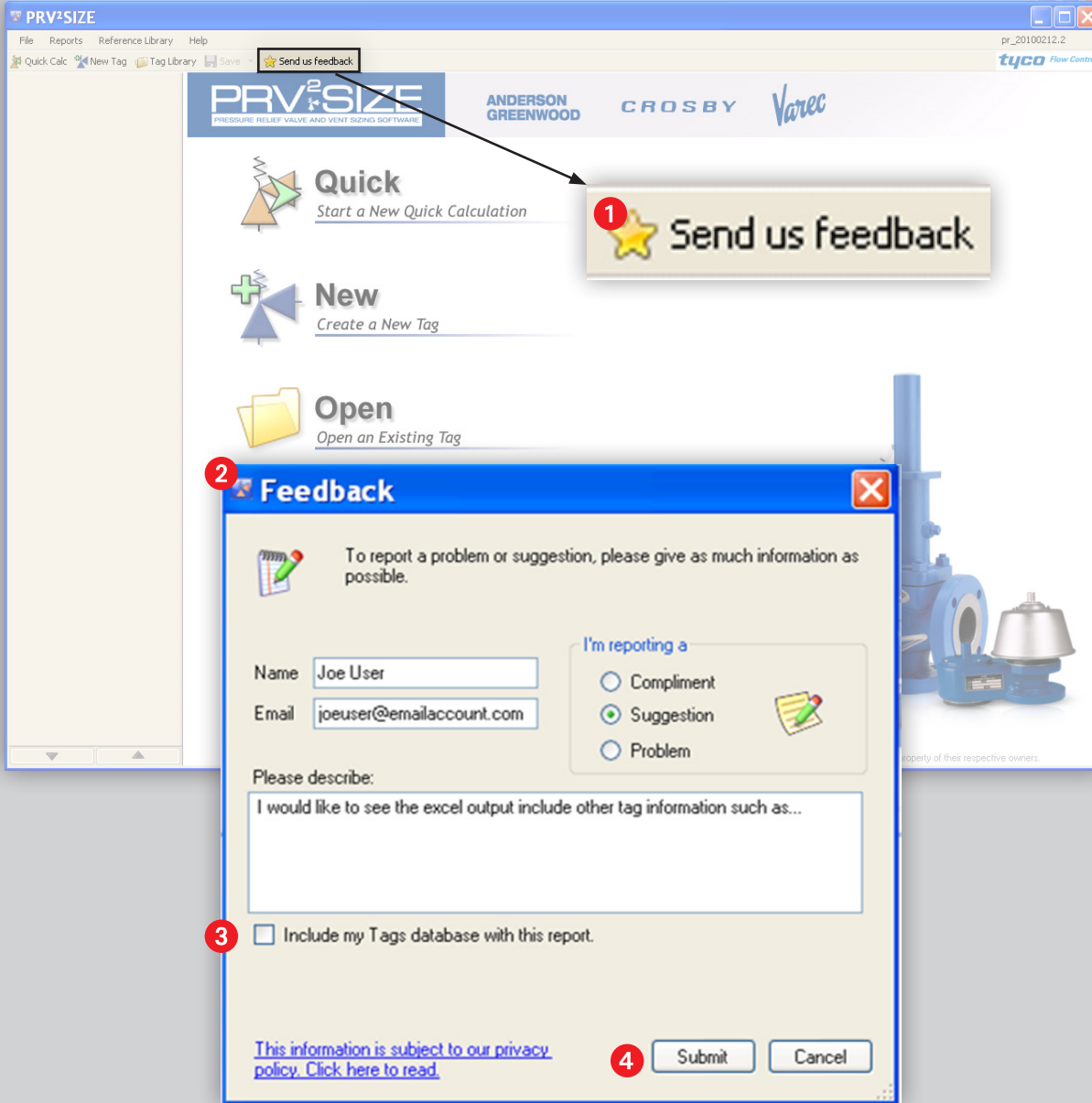
Checking for Updates

Three ways to check for updates to the program

- 1 At any time, you can select the “Check for Updates” option in the help menu. If there are updates to the program, they will be displayed on the popup box. You can click on the update and you will be routed to the program’s website to download the new version. Your computer must be connected to the internet for this feature to work.
- 2 Also, each time you launch the program, the program will check for updates on the website. If there are new

updates, an alert will appear. Your computer must be connected to the internet for this feature to work.

- 3 There are multiple other ways to check for updates:
 - Contact your sales rep
 - Contact the help lines
 - Go to the sizing website <http://sizing.tycovalves.com/> If you have registered your CD with TFC, you will receive a new CD in the mail when the program is updated.



Submitting Feedback

Reporting suggestions, problems and compliments

- 1 Clicking on “Send us feedback” will log information into our issue tracking system.
- 2 Fill in information about issues you find, be as descriptive as possible with problems.
- 3 You can include your entire tag database for additional help.
- 4 The “Submit” button will send your feedback / issue over the internet. You will get an E-mail confirmation that your issue was logged successfully.

PRV²SIZE

PRESSURE RELIEF VALVE AND VENT SIZING SOFTWARE

QUICK START GUIDE

<http://sizing.tycovalves.com>

tyco Flow Control

Tyco Flow Control (TFC) provides the information herein in good faith but makes no representation as to its comprehensiveness or accuracy. This data sheet is intended only as a guide to TFC products and services. Individuals using this data sheet must exercise their independent judgment in evaluating product selection and determining product appropriateness for their particular purpose and system requirements. TFC MAKES NO REPRESENTATIONS OR WARRANTIES, EITHER EXPRESS OR IMPLIED, INCLUDING WITHOUT LIMITATION ANY WARRANTIES OF MERCHANTABILITY OR FITNESS FOR A PARTICULAR PURPOSE WITH RESPECT TO THE INFORMATION SET FORTH HEREIN OR THE PRODUCT(S) TO WHICH THE INFORMATION REFERS. ACCORDINGLY, TFC WILL NOT BE RESPONSIBLE FOR DAMAGES (OF ANY KIND OR NATURE, INCLUDING INCIDENTAL, DIRECT, INDIRECT, OR CONSEQUENTIAL DAMAGES) RESULTING FROM THE USE OF OR RELIANCE UPON THIS INFORMATION. Patents and Patents Pending in the U.S. and foreign countries. Tyco reserves the right to change product designs and specifications without notice. All registered trademarks are the property of their respective owners. Printed in the USA.

Copyright © 2010 Tyco Flow Control. All rights reserved.