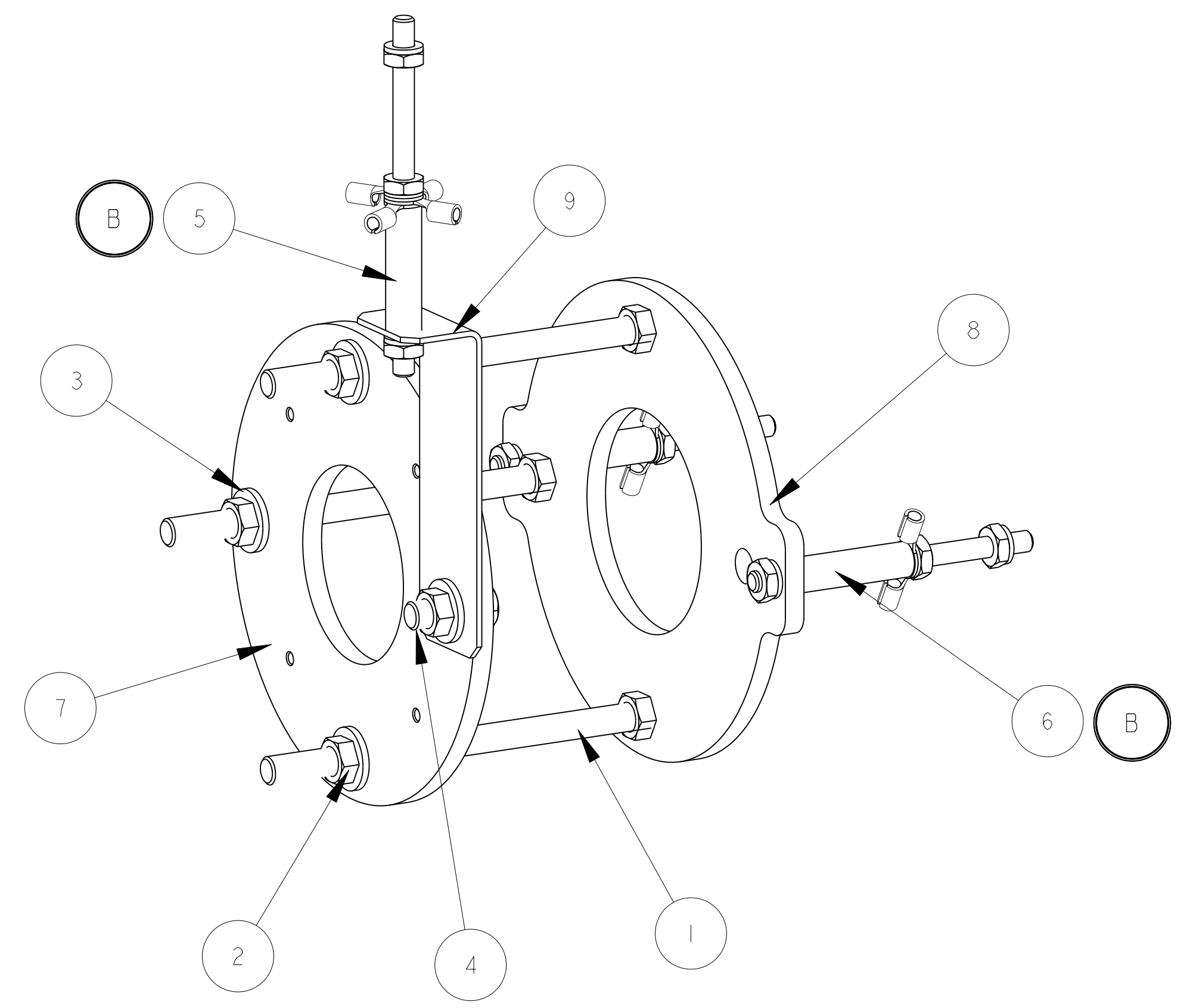
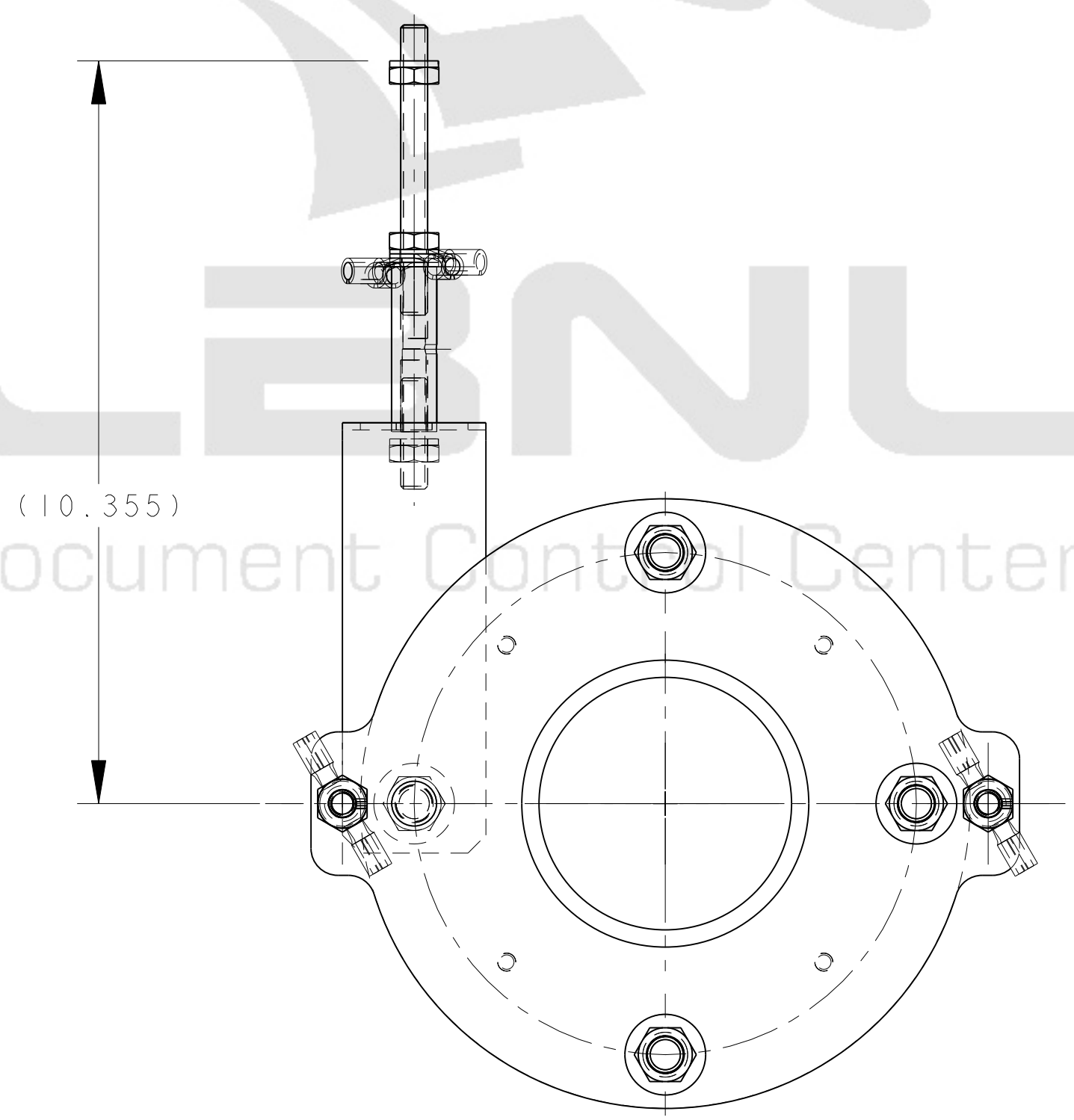
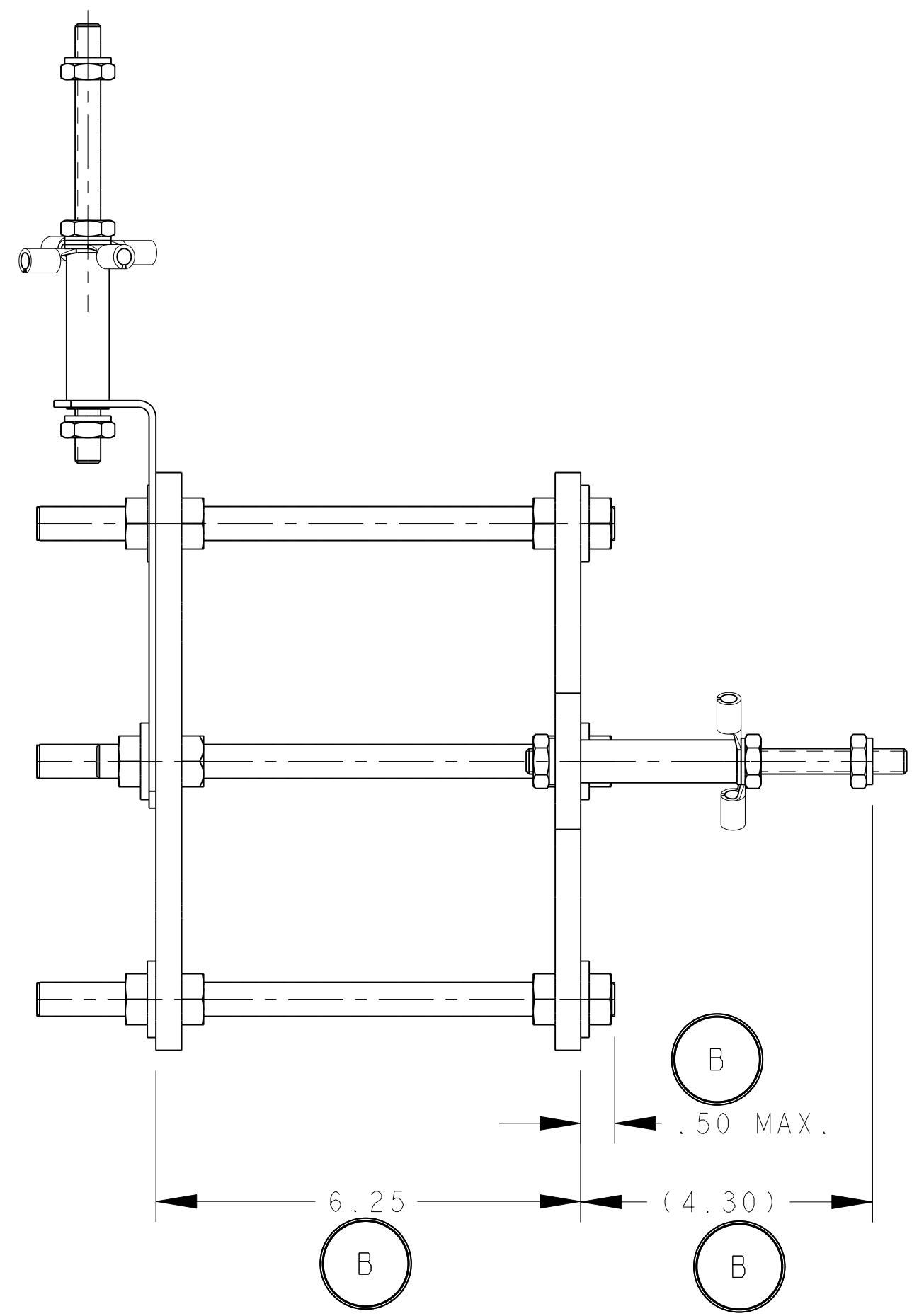
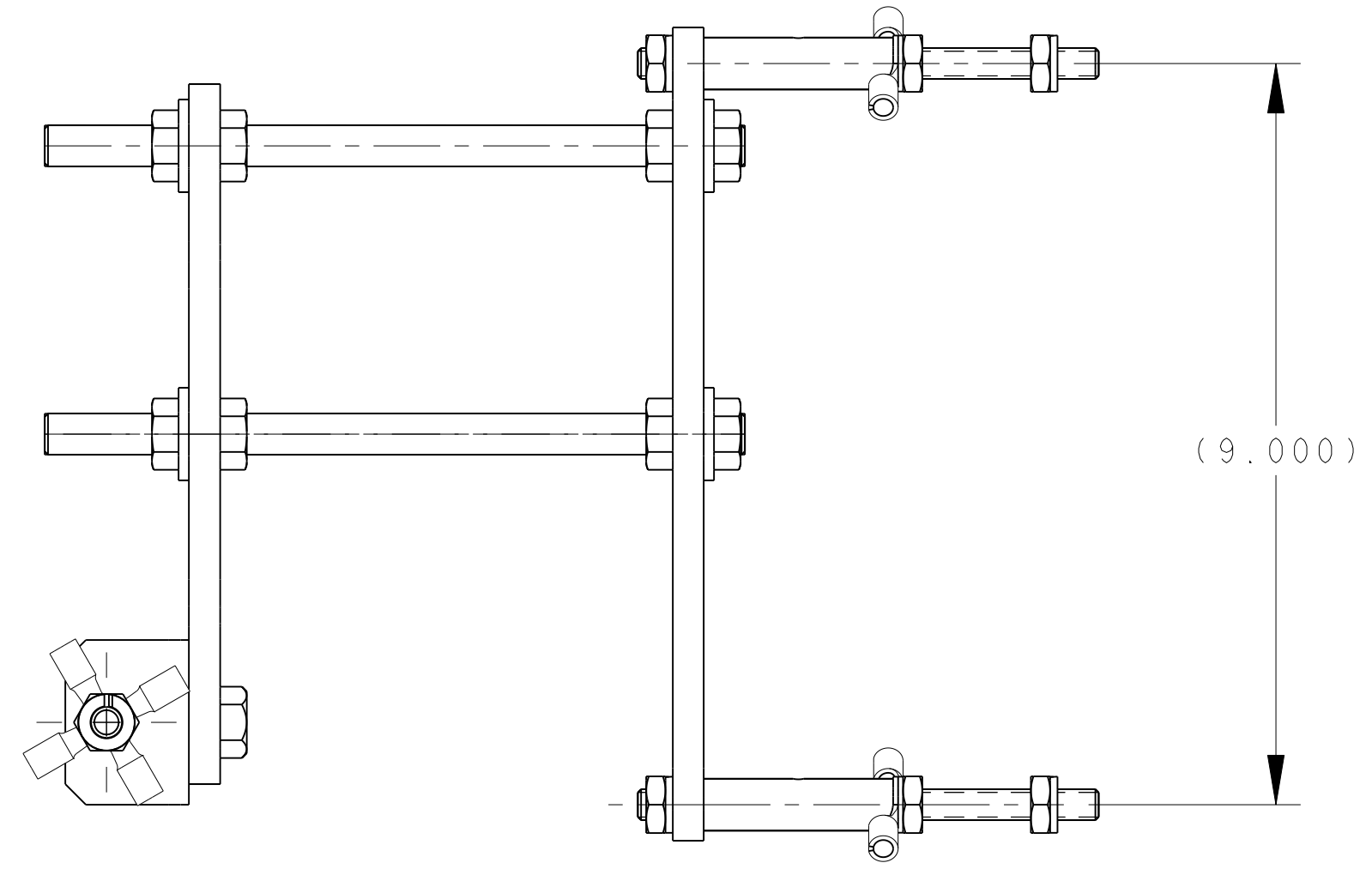
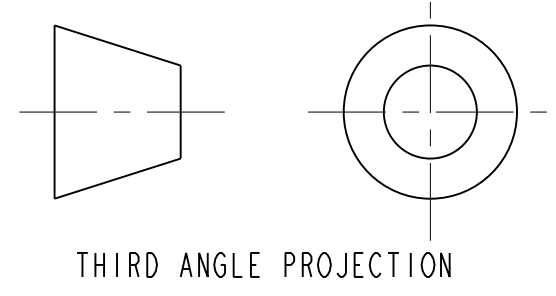


ITEM	PART NO	RECD	DESCRIPTION	MATERIAL
9	25M926	1	XB HANGER, ANGLE PLATE	304 SS
8	25M925	1	XB THRUST PLATE	INVAR 36
7	25M924	1	XB THRUST RING	SS 304L
6	25M922	2	THRUST SUPPORT, ADJUSTABLE	-
5	25M810	1	THRUST SUPPORT, ADJUSTABLE	-
4	-	1	HEX HD BOLT, 1/2-13 X 1-1/4 LG	18-8 SS
3	-	7	1/2" FLAT WASHER	18-8 SS
2	-	13	1/2" HEX NUT	18-8 SS
1	-	3	1/2-13 UNC THREADED ROD X 8.5" LG	18-8 SS



- NOTES: (UNLESS OTHERWISE SPECIFIED)
- THIS IS A CRYOGENIC VACUUM COMPONENT.
 - CLEANING PROCEDURE : PER VENDOR SPECIFICATION WITH LBNL APPROVAL.
 - PACKAGING AND STORAGE PROCEDURE OF THE COMPONENTS: PER VENDOR SPECIFICATION WITH LBNL APPROVAL.
 - DIMENSIONS AND TOLERANCING PER ANSI Y14.5M-1982. UNITS ARE IN INCHES UNLESS OTHERWISE SPECIFIED.
 - USE OF SULFUR OR SILICONE BEARING OILS, LUBRICANTS, OR COOLANTS ARE STRICTLY PROHIBITED.
 - USE OF RESIN OR RUBBER BONDED ABRASIVES UNDER POWER IS STRICTLY PROHIBITED. USE VITREOUS BONDED ABRASIVES ONLY.



REV	DWG	CHK	ZONE	DATE	CHANGES
B	RLM	JPZ		2/11/04	THRUST SUPPORT ADJUSTABLE WAS WITH THERMAL BREAK VISUAL CHANGES TO ADJUSTABLE THRUST SUPPORTS. 6.25 WAS 7.00, (4.30) WAS (3.670), ADD .50 MAX
A	MJK	DPO		11/16/02	INITIAL RELEASE
					CHANGES

TOLERANCES		SHOP ORDERS	
X.X ± 0.1	FRAC. ± 1/64	ACCT NO.	SER. NO.
X.XX ± 0.03	Angles ± 1.00°	DEL. TO.	DATE ISSD
X.XXX ± 0.010	FINISH 125 _{μm}	DATE RECD	DATE RECD

DO NOT SCALE PRINT

THREADS ARE CLASS 2

CHAMFER ENDS OF ALL SCREW THREADS 30°

CUT ROUND, 1.5 THREAD RELIEF ON MACHINED THREAD

BREAK EDGES .016 MAX. ON MACHINED WORK

REMOVE BURRS, WELD SPATTER & LOOSE SCALE

IN ACCORDANCE WITH ASME Y14.5M & B46.1

ERNEST ORLANDO LAWRENCE BERKELEY NATIONAL LABORATORY UNIVERSITY OF CALIFORNIA - BERKELEY			
LHC IR FEEDBOX CRYOGENICS XB THRUST PLATE ASSY			
MICROFILMED:	DWG. TYPE	SHOWN ON	SCALE: 1/2
	ASSEM	-	DO NOT SCALE PRINTS
PATENT CLEAR:	DESIGN ACCT. NO.	CATEGORY CODE	SHEET 1 OF 1 DWG. NO. 25M9234 SIZE B
	Z5LCE2	LC2003	REV.