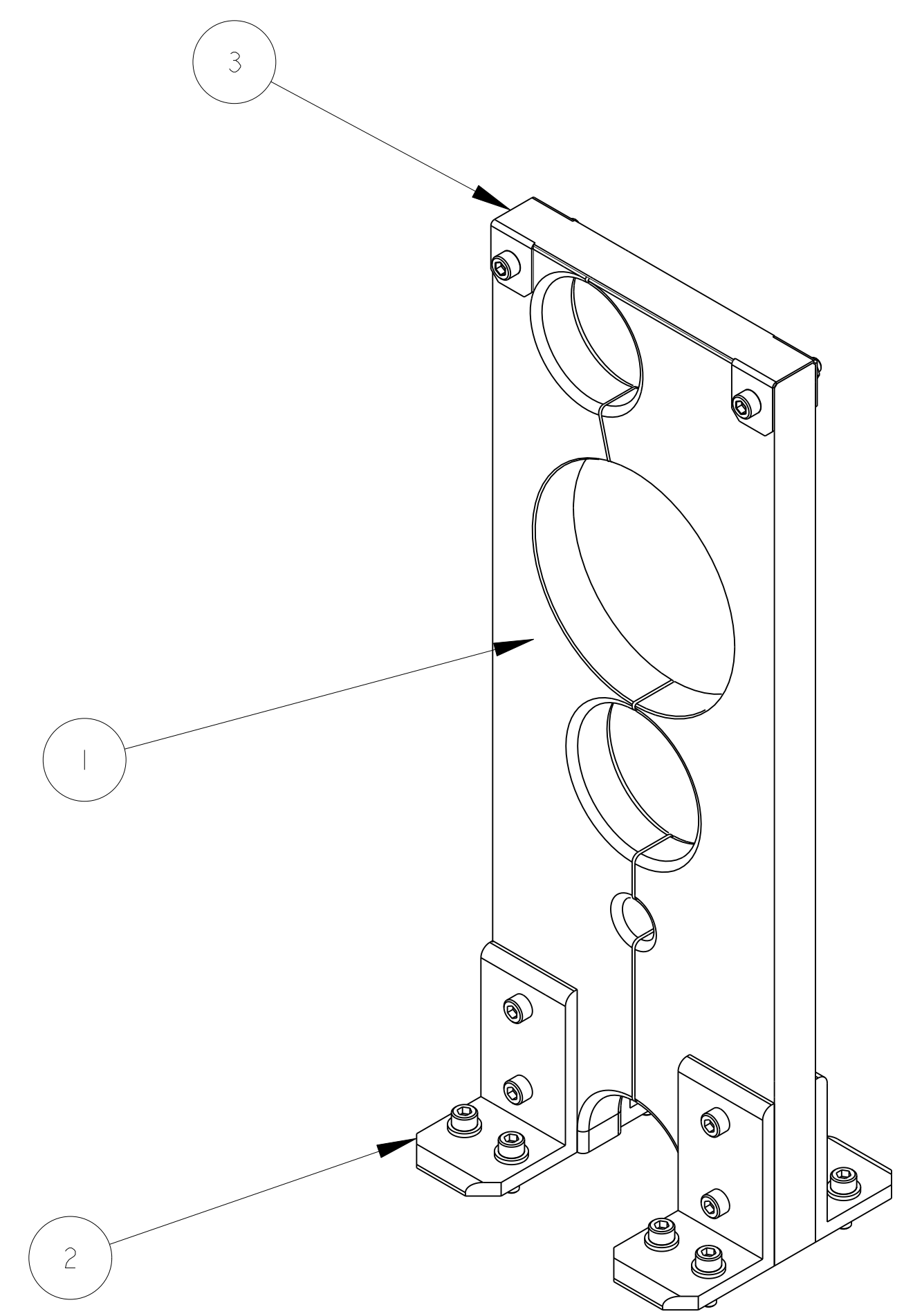
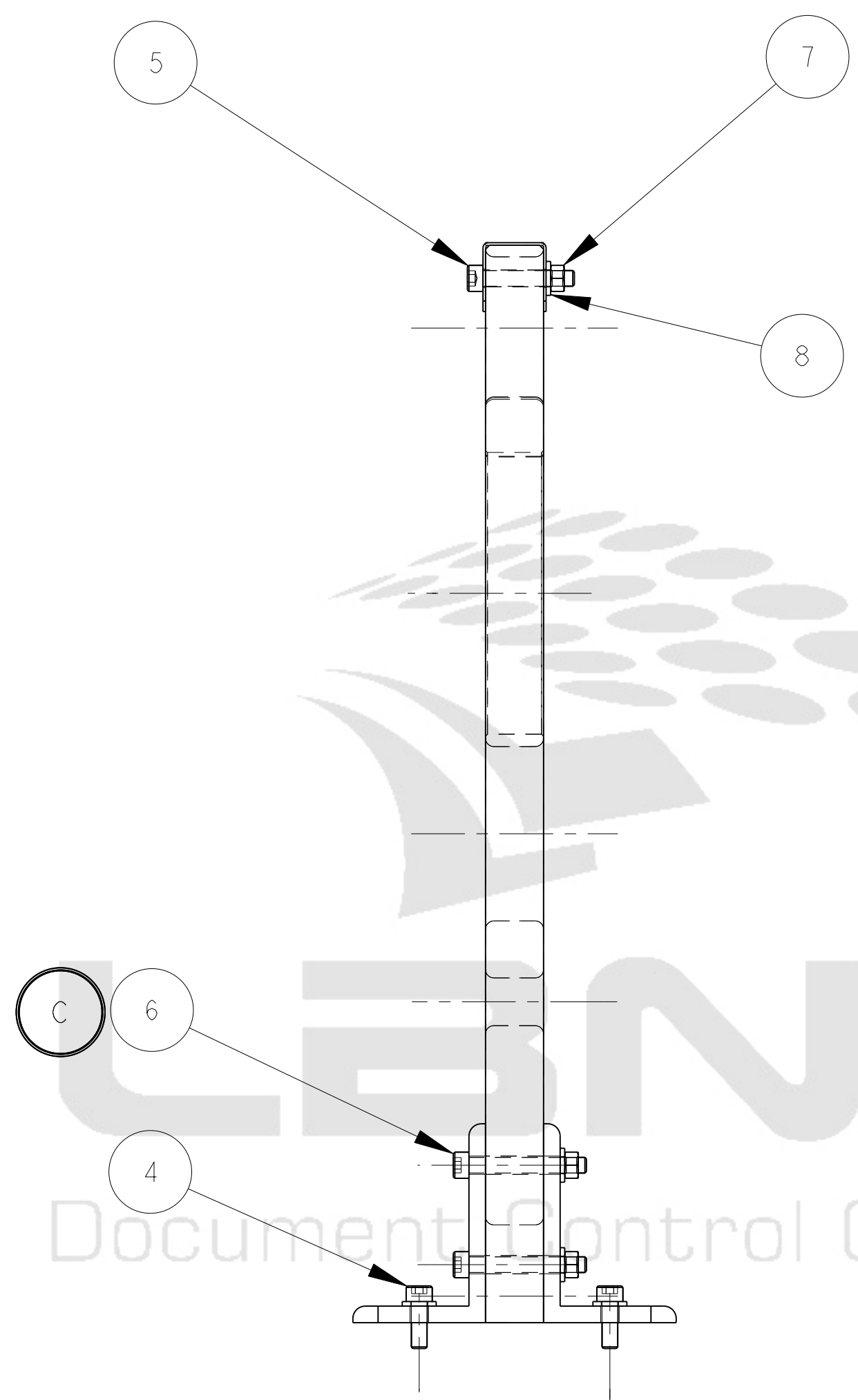
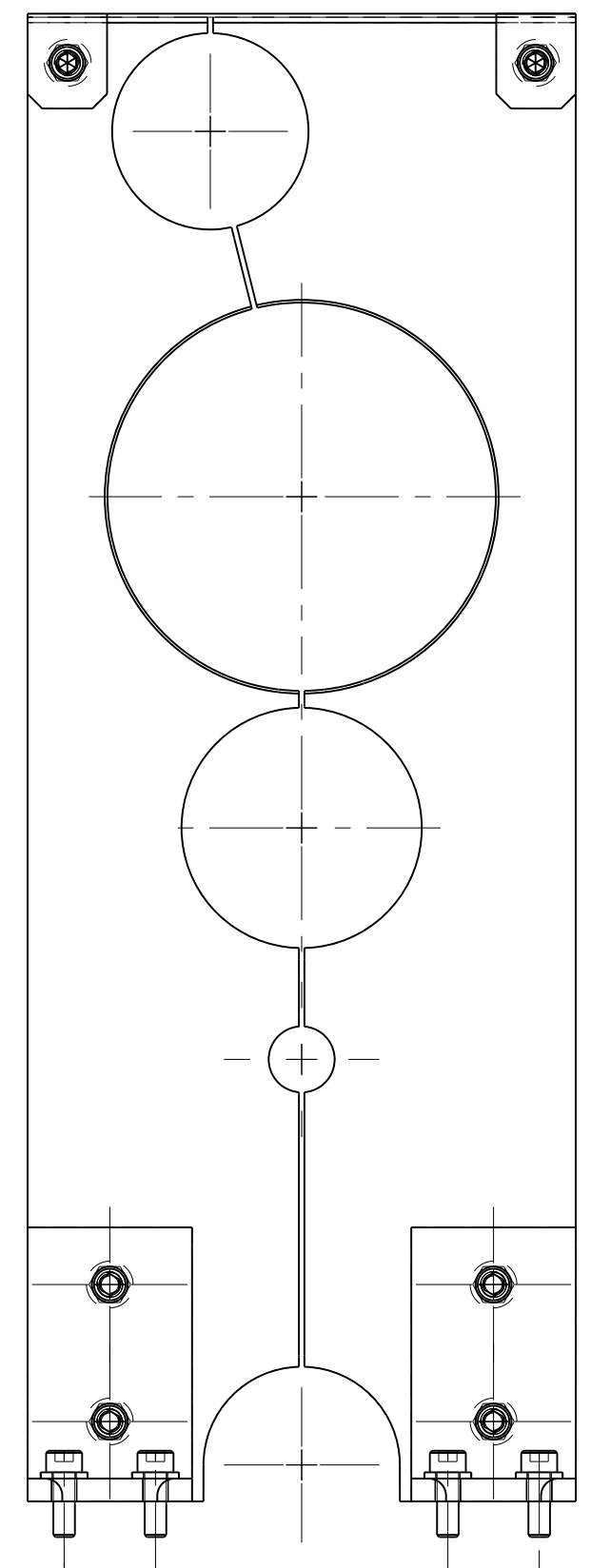


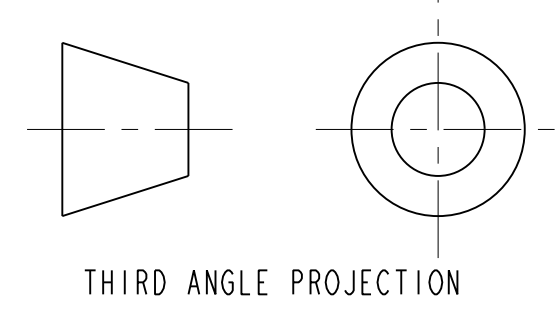
ITEM	PART NO.	RECD	DESCRIPTION	MATERIAL
8	-	1.4	WASHER, M6	SS 18-8
7	-	6	NUT, M6	SS 18-8
6	-	4	SCH, M6X1, 45LG, SILVER PLATED	SS 18-8
5	-	2	SCH, M6X1, 35LG, SILVER PLATED	SS 18-8
4	-	8	SCH, M6X1, 18LG., VENTED, SILVER PLATED	SS 18-8
3	251597	1	TOP BRACKET PIPE SUPPORT	SS
2	251598	4	SUPPORT BRACKET	SS
1	251906	1	CENTER PIPE SUPPORT	NEMA G10



SCALE 1/2

NOTES: (UNLESS OTHERWISE SPECIFIED)

- THIS IS A CRYOGENIC VACUUM COMPONENT.
- CLEANING PROCEDURE : PER VENDOR SPECIFICATION WITH LBNL APPROVAL.
- PACKAGING AND STORAGE PROCEDURE OF THE COMPONENTS: PER VENDOR SPECIFICATION WITH LBNL APPROVAL.
- DIMENSIONS AND TOLERANCING PER ANSI Y14.5M-1982. UNITS ARE IN INCHES UNLESS OTHERWISE SPECIFIED.
- USE OF SULFUR OR SILICONE BEARING OILS, LUBRICANTS, OR COOLANTS ARE STRICTLY PROHIBITED.
- USE OF RESIN OR RUBBER BONDED ABRASIVES UNDER POWER IS STRICTLY PROHIBITED. USE VITREOUS BONDED ABRASIVES ONLY.



<table border="1"> <tr> <td>ACCT NO.</td> <td>NO.</td> <td>DATE</td> <td>ISSD</td> </tr> <tr> <td>DEL TO</td> <td>DATE</td> <td>RECD</td> <td></td> </tr> </table>				ACCT NO.	NO.	DATE	ISSD	DEL TO	DATE	RECD		<b>SHOP ORDERS</b> SER. NO. - DATE ISSD - DATE RECD -		<b>ERNEST ORLANDO LAWRENCE BERKELEY NATIONAL LABORATORY</b> UNIVERSITY OF CALIFORNIA - BERKELEY	
ACCT NO.	NO.	DATE	ISSD												
DEL TO	DATE	RECD													
TOLERANCES X.X ± 0.1    FRAC. ± 1/64 X.XX ± 0.03    Angles ± 1.00° X.XXX ± 0.010    FINISH 125 <sub>μm</sub>				SURFACE TREATMT IDENT METHOD TAG PROJECT NUMBER N/A PROJECT NAME N/A		LHC IR FEEDBOX CRYOGENICS SUPPORT, CENTER PIPE, DFBXC									
DO NOT SCALE PRINT THREADS ARE CLASS 2 CHAMFER ENDS OF ALL SCREW TREADS 30° CUT ROUND, 1.5 THREAD RELIEF ON MACHINED THREADS BREAK EDGES .016 MAX. ON MACHINED WORK REMOVE BURRS, WELD SPLATTER & LOOSE SCALE IN ACCORDANCE WITH ASME Y14.5M & B46.1				DWG. NO. 2519054 DESIGN ACCT. NO. Z5LCE2 CATEGORY CODE LH2003		MICROFILMED: - DWG. TYPE ASSEM SHOWN ON - SCALE: 1/2 DO NOT SCALE PRINTS									
C RLM JPZ 6/23/03 45LG WAS 40LG B RLM SPV 11-26-02 MATERIAL CHANGE WASHER A RLM DPO 10-4-02 INITIAL RELEASE REV DWG CHK ZONE DATE CHANGES				DWG. BY R LA MANTIA DATE 21-Mar-02 CHK BY D OSHATZ DATE 19-Sep-02 APPR BY D OSHATZ DATE 19-Sep-02		SHEET 1 OF 1 DWG. NO. 2519054 SIZE C REV.									