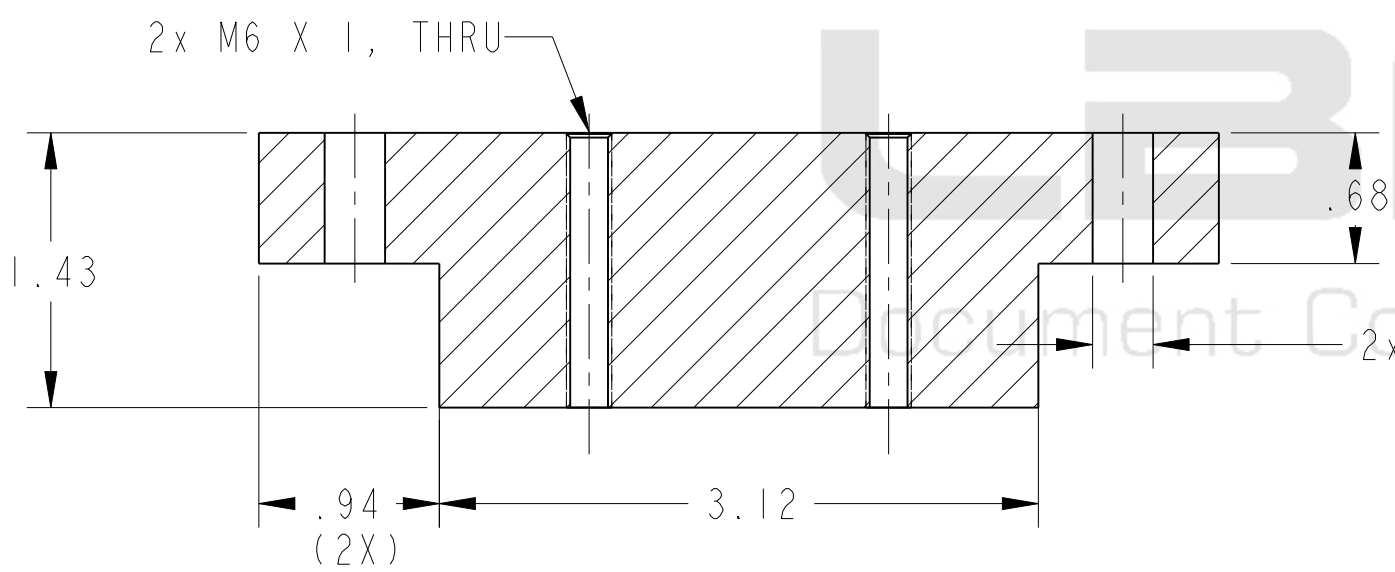
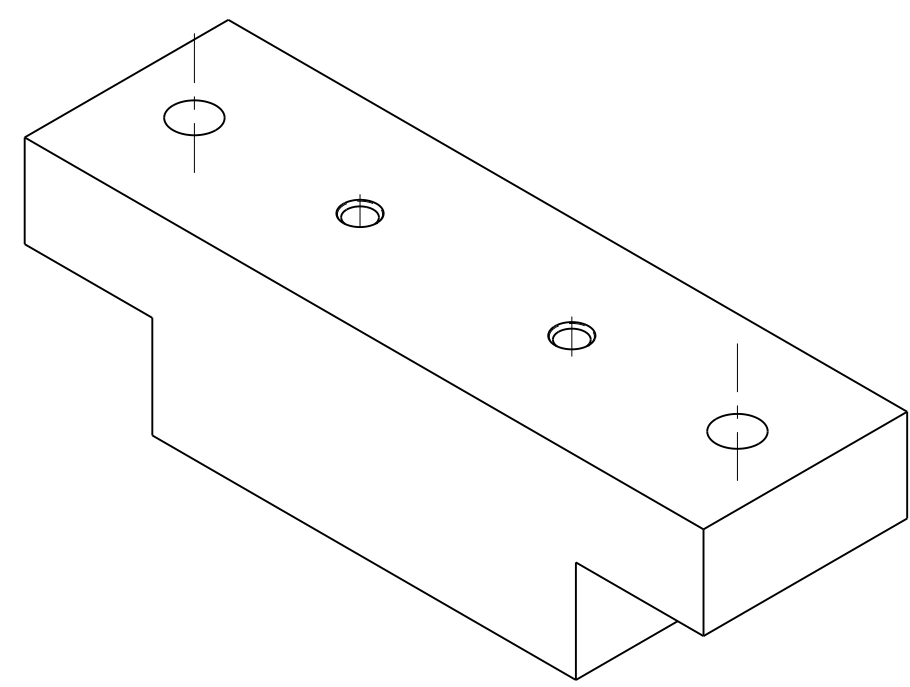
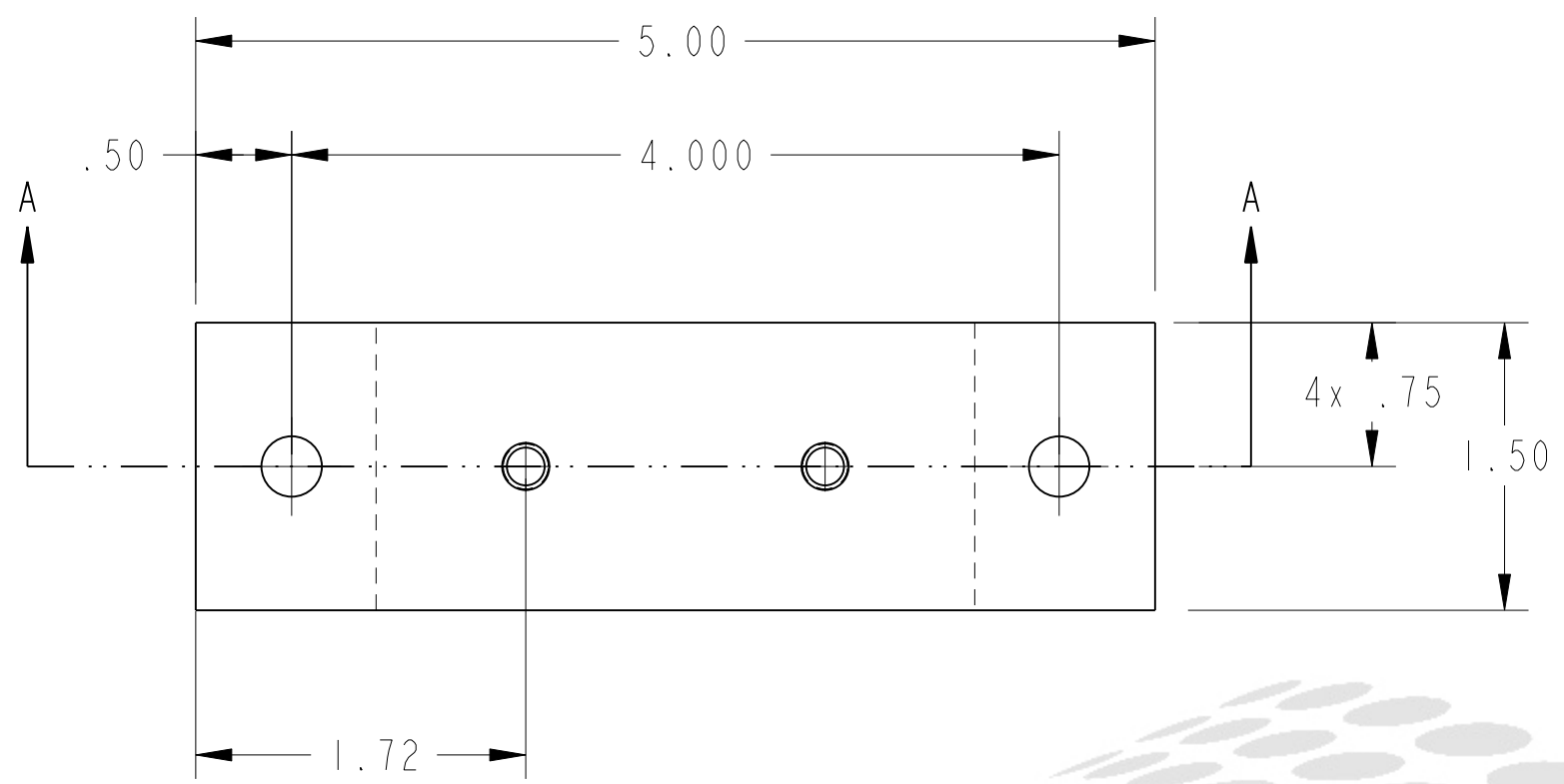


D C B A

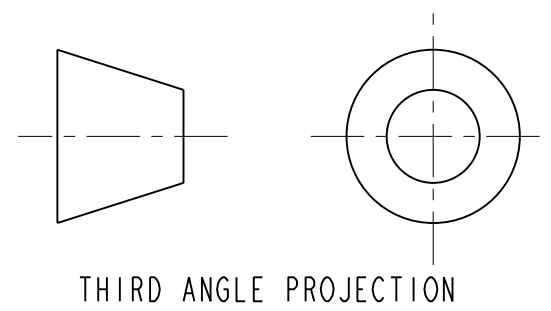
DESCRIPTION	MATERIAL	MAT. LOCATION
BAR	NEMA G10	-



SECTION A-A

NOTES: (UNLESS OTHERWISE SPECIFIED)

1. THIS IS A CRYOGENIC VACUUM COMPONENT.
2. CLEANING PROCEDURE : PER VENDOR SPECIFICATION WITH LBNL APPROVAL.
3. PACKAGING AND STORAGE PROCEDURE OF THE COMPONENTS: PER VENDOR SPECIFICATION WITH LBNL APPROVAL.
4. DIMENSIONS AND TOLERANCING PER ANSI Y14.5M-1982. UNITS ARE IN INCHES UNLESS OTHERWISE SPECIFIED.
5. USE OF SULFUR OR SILICONE BEARING OILS, LUBRICANTS, OR COOLANTS ARE STRICTLY PROHIBITED.
6. USE OF RESIN OR RUBBER BONDED ABRASIVES UNDER POWER IS STRICTLY PROHIBITED. USE VITREOUS BONDED ABRASIVES ONLY.



THIRD ANGLE PROJECTION

REV	DWG	CHK	ZONE	DATE	CHANGES
A	MJK	DPO		9/18/02	INITIAL RELEASE

UNLESS OTHERWISE SPECIFIED		SHOP ORDERS		SER. NO.	-
TOLERANCES	X.X ± 0.1	FRAC. ± 1/64	ACCT. NO.	NO. RECD	DATE ISSD
	X.XX ± 0.03	Angles ± 1.00°	DEL TO		DATE RECD
	X.XXX ± 0.010	FINISH $\sqrt{25}$ (µin)	SURFACE TREATMT		
DO NOT SCALE PRINT					
THREADS ARE CLASS 2					
CHAMFER ENDS OF ALL SCREW TREADS 30°					
CUT ROUND, 1.5 THREAD RELIEF ON MACHINED THREADS					
BREAK EDGES .016 MAX. ON MACHINED WORK					
REMOVE BURRS, WELD SPLATTER & LOOSE SCALE					
IN ACCORDANCE WITH ASME Y14.5M & B46.1					
DWG BY	R. LA MANTIA	DATE	05-Dec-01		
CHK BY	Jon Zbasnik	DATE	4/2/02		
APR BY	Jon Zbasnik	DATE	4/2/02		

ERNEST ORLANDO LAWRENCE BERKELEY NATIONAL LABORATORY UNIVERSITY OF CALIFORNIA - BERKELEY					
LHC IR FEEDBOX CRYOGENICS SPACER					
MICROFILMED:	DWG. TYPE	SHOWN ON	SCALE: 1.000	DO NOT SCALE PRINTS	
	PART	24C3526		SHEET 1 OF 1	
PATENT CLEAR:	DESIGN ACCT. NO.	CATEGORY CODE	DWG. NO.	SIZE	REV.
	Z5LCE2	LH2003	2510813	A	

DWG. NO. 2510813

REV. A