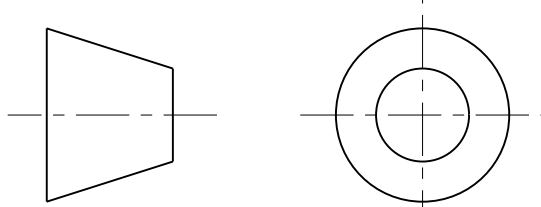
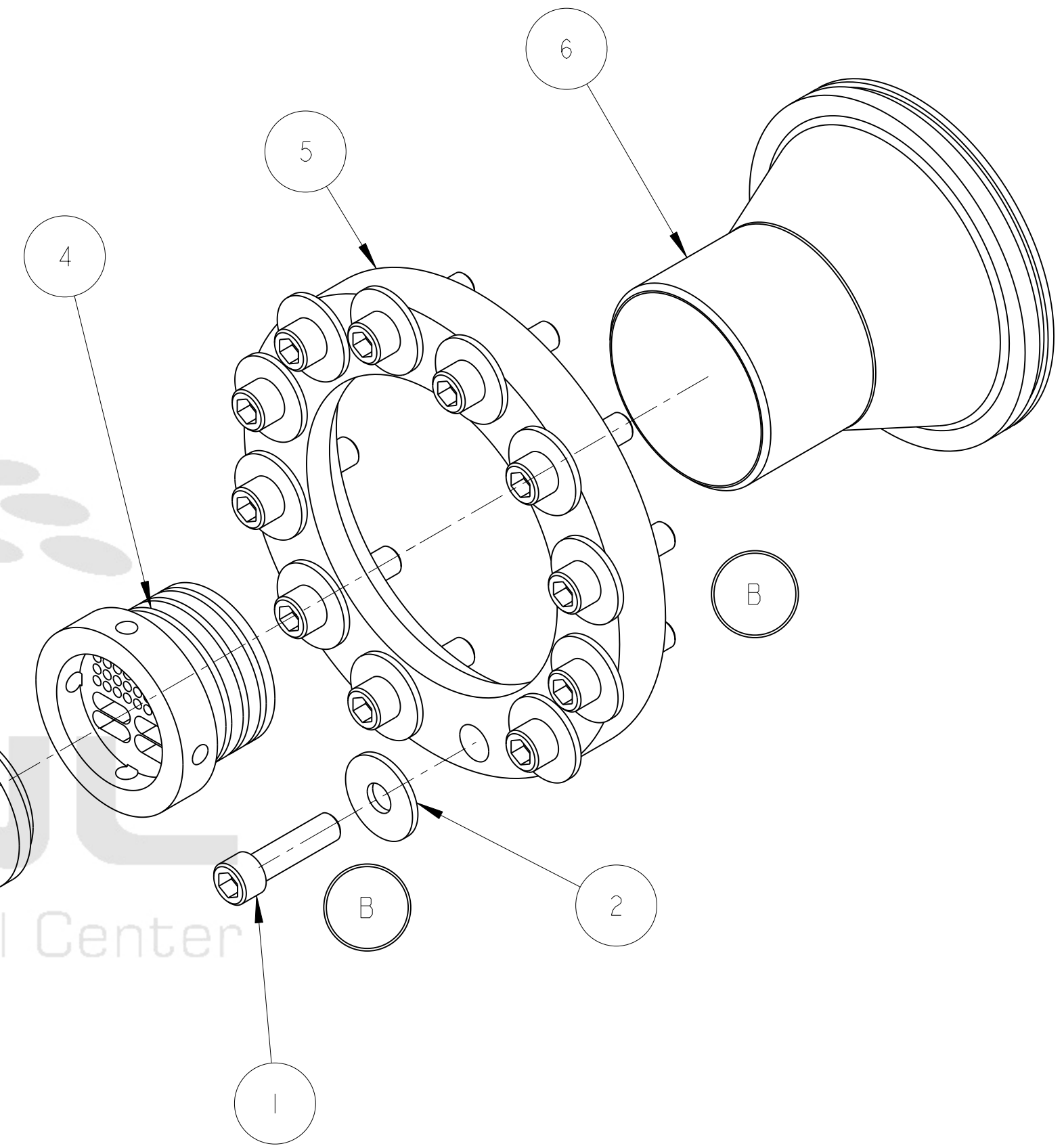
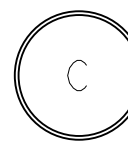
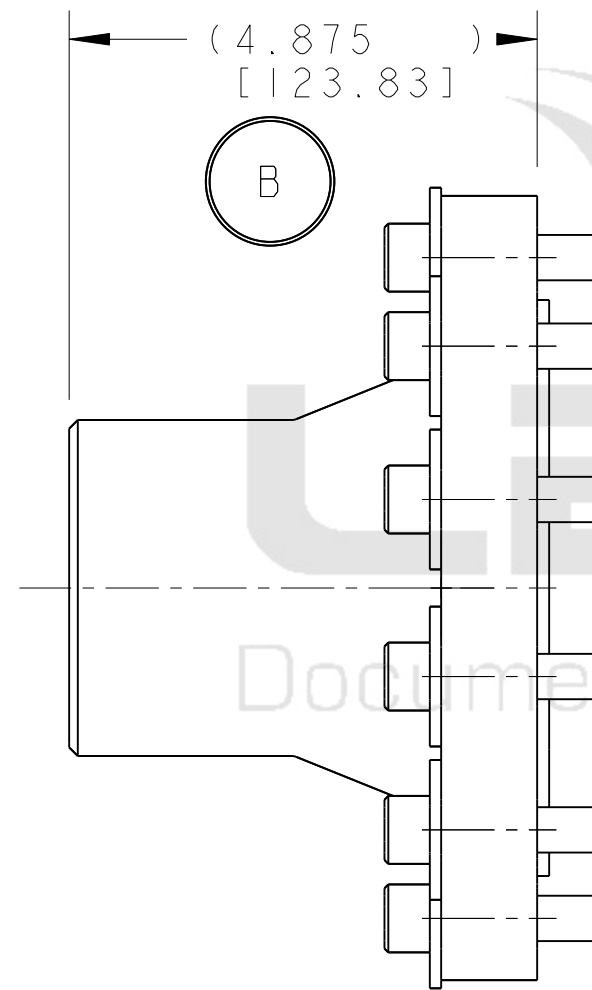
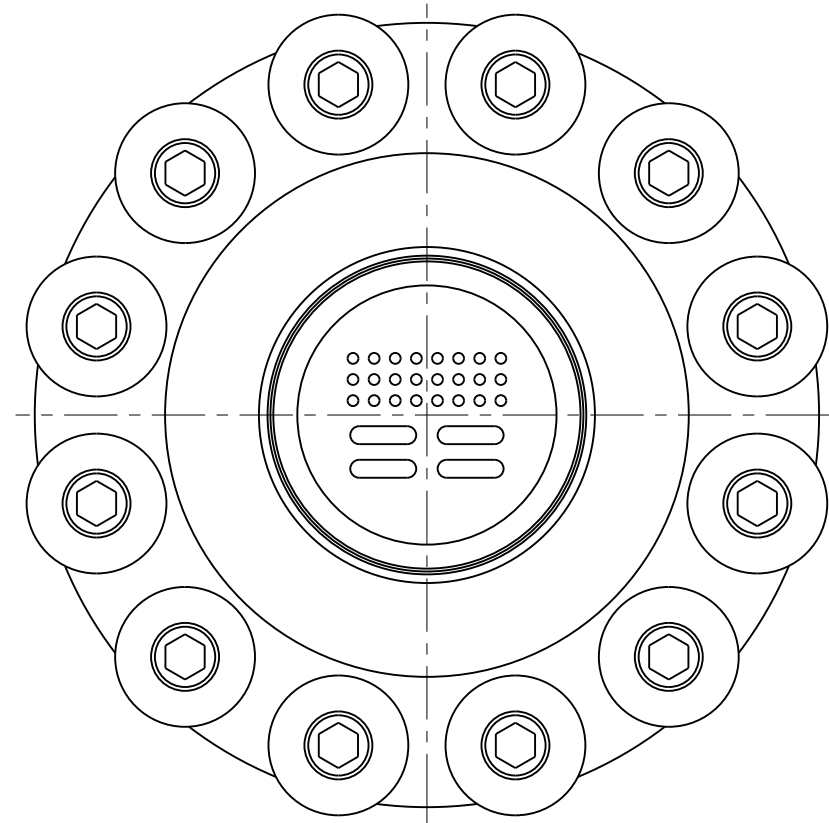


NOTES: (UNLESS OTHERWISE SPECIFIED)

1. THIS IS A CRYOGENIC VACUUM COMPONENT.
2. WELDING PROCEDURE: PER VENDOR SPECIFICATION WITH LBNL APPROVAL.
3. CLEANING PROCEDURE : PER VENDOR SPECIFICATION WITH LBNL APPROVAL.
4. PACKAGING AND STORAGE PROCEDURE OF THE COMPONENTS: PER VENDOR SPECIFICATION WITH LBNL APPROVAL.
5. DIMENSIONS AND TOLERANCING PER ANSI Y14.5M-1982. UNITS ARE IN INCHES [mm] UNLESS OTHERWISE SPECIFIED.
6. USE OF SULFUR OR SILICONE BEARING OILS, LUBRICANTS, OR COOLANTS ARE STRICTLY PROHIBITED.
7. USE OF RESIN OR RUBBER BONDED ABRASIVES UNDER POWER IS STRICTLY PROHIBITED. USE VITREOUS BONDED ABRASIVES ONLY.
8. VENDOR SUGGESTED CHANGES TO WELD PREPS; SUBJECT TO LBNL APPROVAL.

ITEM	PART NO	REQD	DESCRIPTION	MATERIAL
6	251448	1	LAMBDA PLUG, WELD NECK FLANGE	SS 304L
5	251447	1	LAMBDA PLUG, TIE DOWN RING	SS 304L
4	251483	1	LAMBDA PLUG MAIN BODY, MQXI	NEMA GIO-CR
3	251484	1	LAMBDA PLUG CAP, MQXI	NEMA GIO
2	-	12	WASHER, M12, MC MASTER #91116A180	SS
1	-	12	SHCS M12, 45mm LG., MC MASTER #91292A229	SS



THIRD ANGLE PROJECTION

				UNLESS OTHERWISE SPECIFIED		SHOP ORDERS		SER. NO. -		ERNEST ORLANDO LAWRENCE BERKELEY NATIONAL LABORATORY UNIVERSITY OF CALIFORNIA - BERKELEY			
				TOLERANCES		ACCT. NO.		NO. REQD					
				X.X ± 0.1 FRAC. ± 1/64		DEL TO		DATE REQD		DATE		LHC IR FEEDBOX CRYOGENICS LAMBDA PLUG ASSY, MQXI	
				X.XX ± 0.03 Angles ± 1.00°		SURFACE TREATMT							
				X.XXX ± 0.010 FINISH 125 $\sqrt{\text{muin}}$		IDENT METHOD TAG		DATE 31-Jul-02		PATENT CLEAR:		DESIGN ACCT. NO. CATEGORY CODE DWG. NO. SIZE REV. Z5LCE2 LH2003 25H4003 C	
C	RLM	JPZ	6/23/03	25M946 REPLACED BY 251483; 25M947 REPLACED BY 251484; CLARIFIED TITLE		PROJECT NUMBER N/A		DATE 31-JUL-02		DWG. NO.		SIZE	
B	RLM	JPZ	1/8/03	25M946 WAS ERRONEOUSLY NAMED 25H404; 25M947 WAS ERRONEOUSLY NAMED 25H403; EXPLODED VIEW CORRECTION; DIM TO SHOW AS INSTALLED M12 SCREW WAS 40LG, M12 WSHR WAS SMALLER OD		PROJECT NAME N/A		DATE 31-JUL-02		DWG. NO.		SIZE	
A	ARH	DPO	9-16-02	INITIAL RELEASE		DWG. BY KNOLLS		DATE 31-Jul-02		DWG. NO.		SIZE	
REV	DWG	CHK	ZONE	DATE	CHANGES	CHK BY ZBASNIK, OSHATZ		DATE 31-JUL-02		DWG. NO.		SIZE	
						APR BY ZBASNIK, OSHATZ		DATE 31-JUL-02		DWG. NO.		SIZE	

DWG. NO. 25H4003
 SIZE C
 REV. 1

SHEET 1 OF 1
 DWG. NO. 25H4003
 SIZE C
 REV. 1