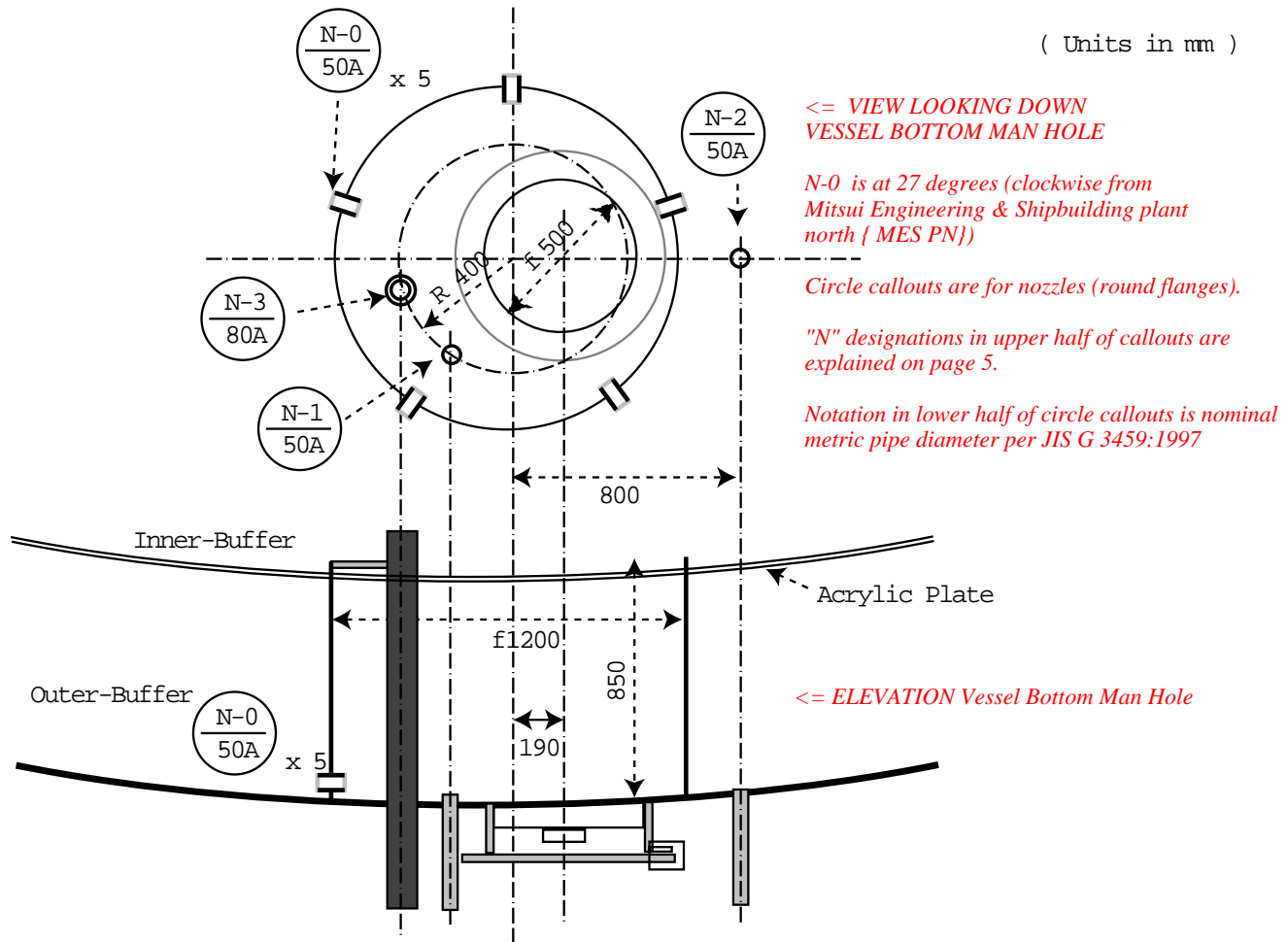
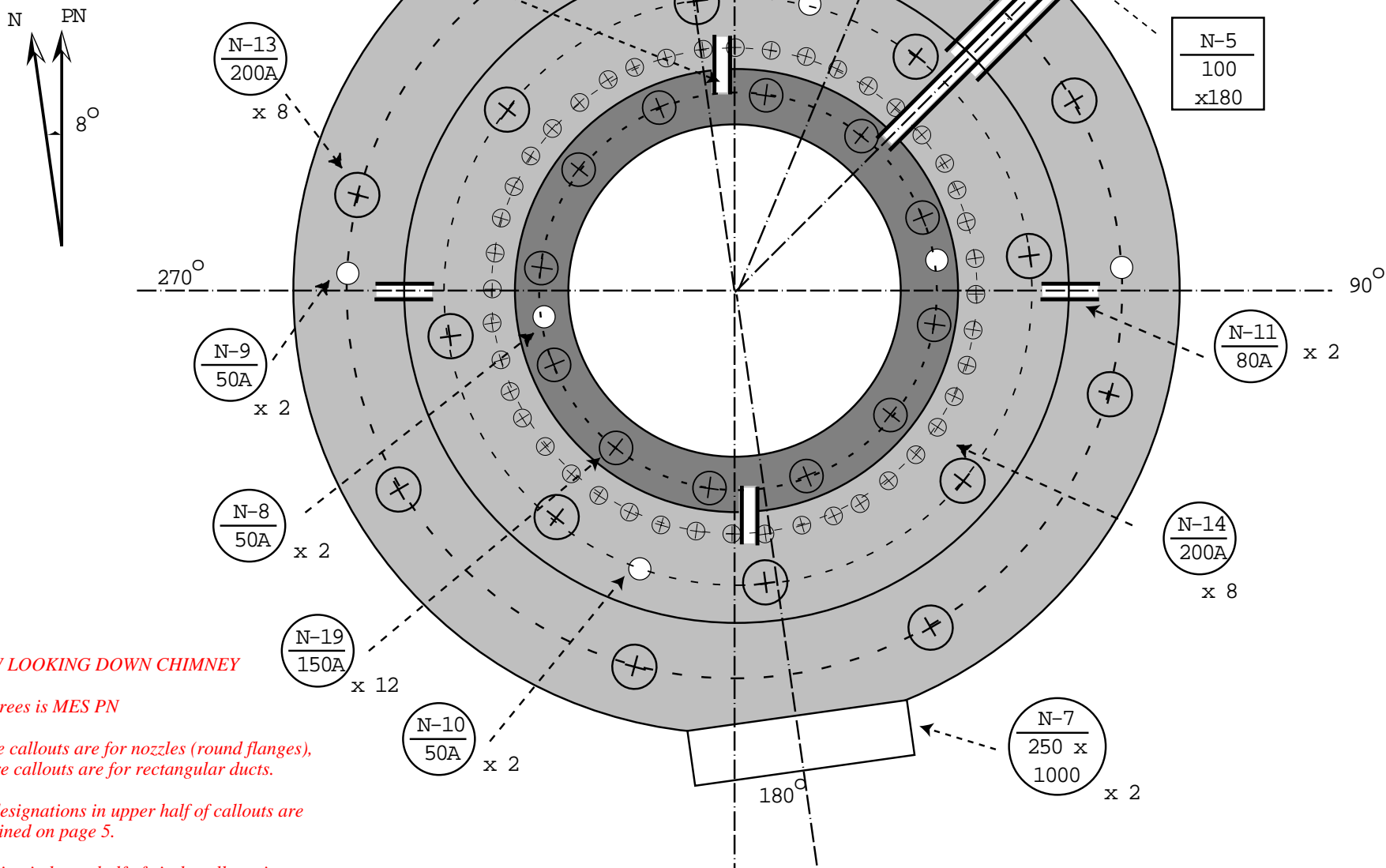


# Bottom Nozzle Plane & Side View



# Top Nozzle Plane View

( Units in mm )



VIEW LOOKING DOWN CHIMNEY

0 degrees is MES PN

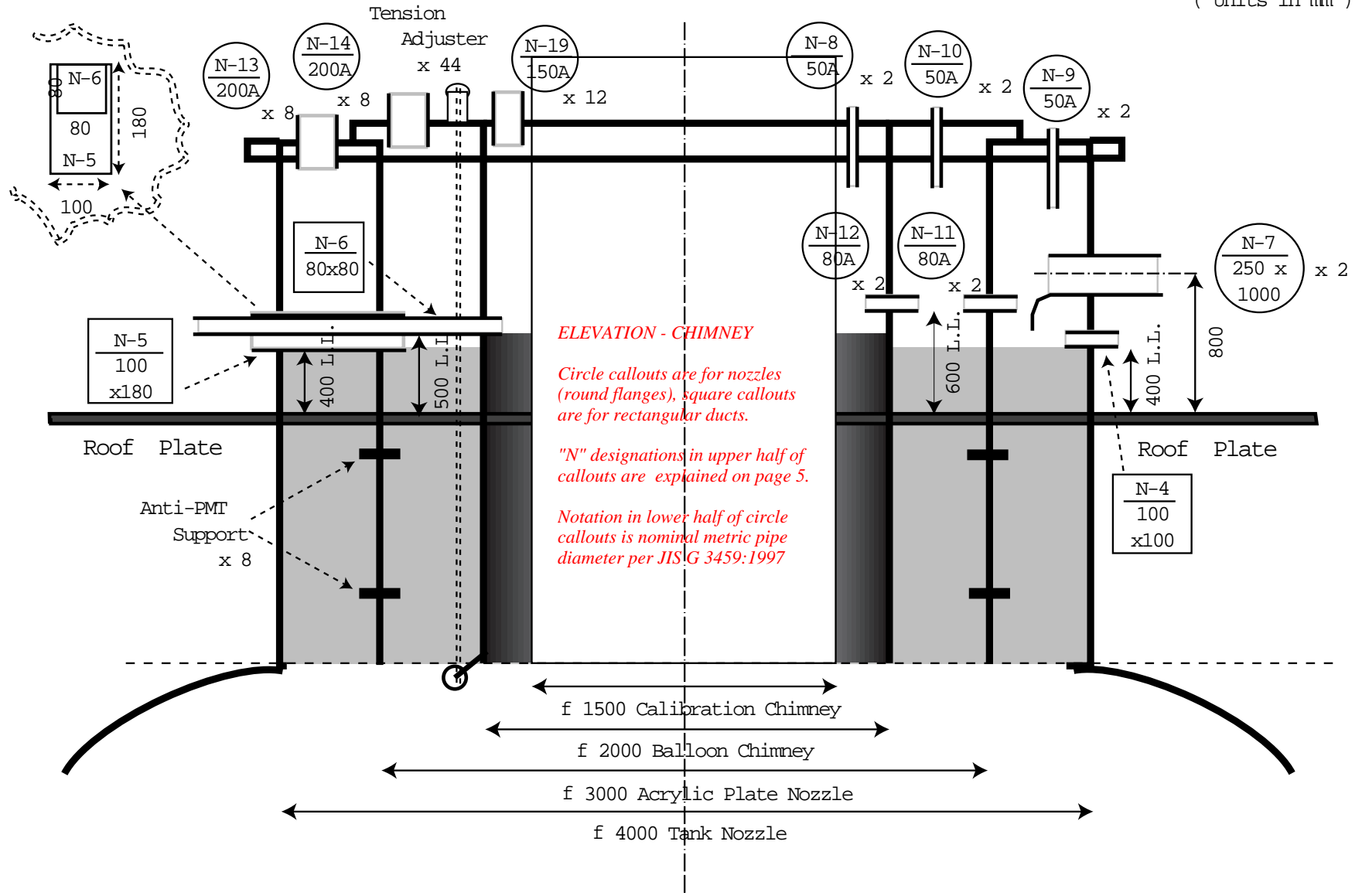
Circle callouts are for nozzles (round flanges),  
square callouts are for rectangular ducts.

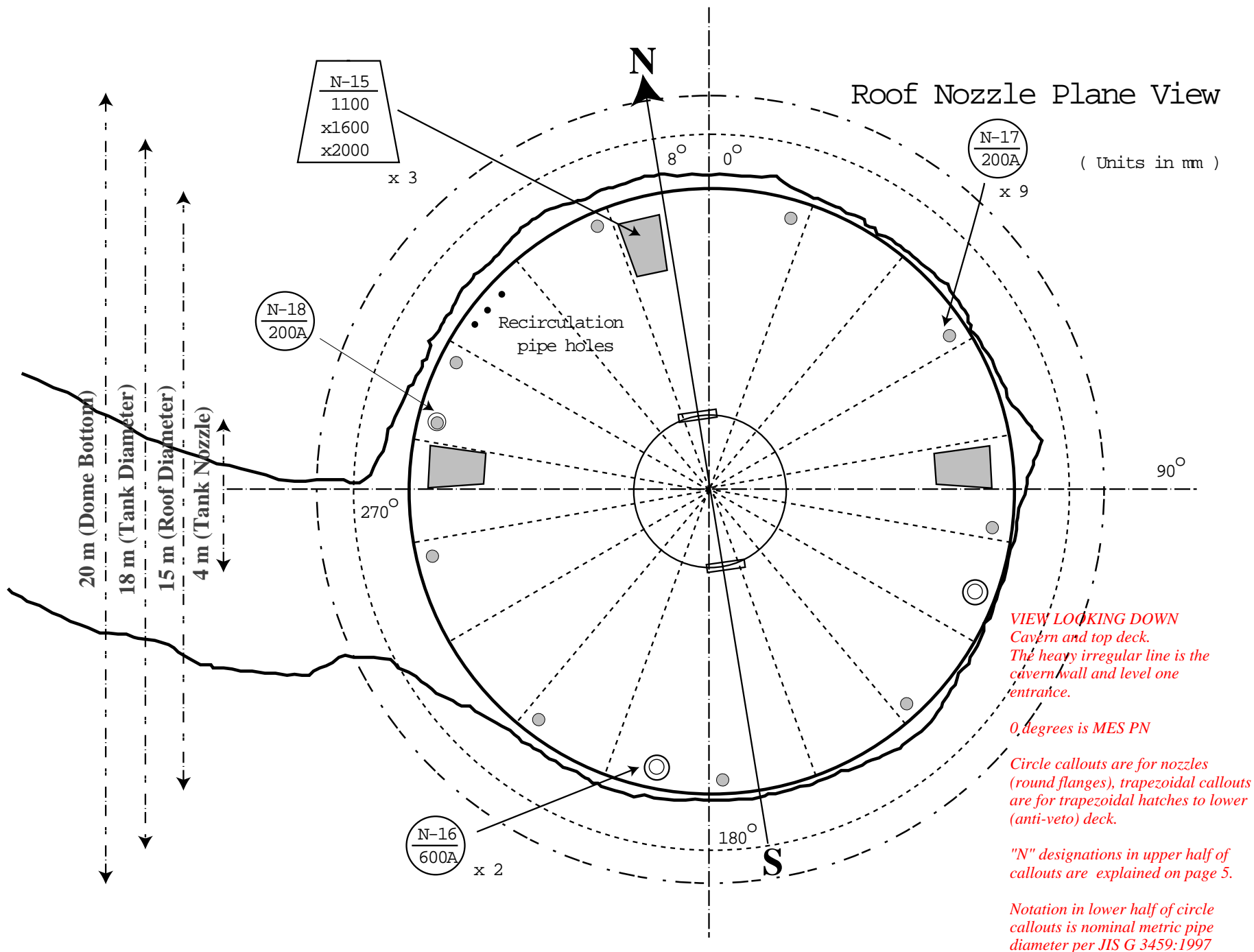
"N" designations in upper half of callouts are  
explained on page 5.

Notation in lower half of circle callouts is  
nominal metric pipe diameter per JIS G 3459:1997

# Top Nozzle Side View

( Units in mm )





## Drawing Notation

N-0	Inner-Outer Through Pipes	N-1	Inner-Buffer Oil In
N-2	Outer-Buffer Oil In	N-3	Liquid Scintillator Drain
N-4	Outer-Buffer Oil Overflow	N-5	Inner-Buffer Oil Overflow
N-6	Liquid Scintillator Overflow	N-7	Inner-Counter Cable-Holes
N-8	Nitrogen-In from Balloon Chimney	N-9	Nitrogen-Out from Outer-Buffer
N-10	Nitrogen-In from Inner-Buffer	N-11	Emergency Overflow for Liquid Scintillator
N-12	Emergency Overflow for Buffer Oil	N-13	Monitor Holes for Outer-Buffer Layer
N-14	Monitor Holes for Inner-Buffer Layer	N-15	Access Hatch
N-16	Anti-Counter Cable Holes	N-17	Anti-Counter Monitor Holes
N-18	Compensating Coil Hole	N-19	Monitor Holes for Liquid Scintillator Layer