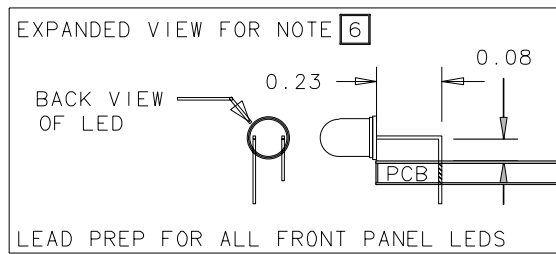
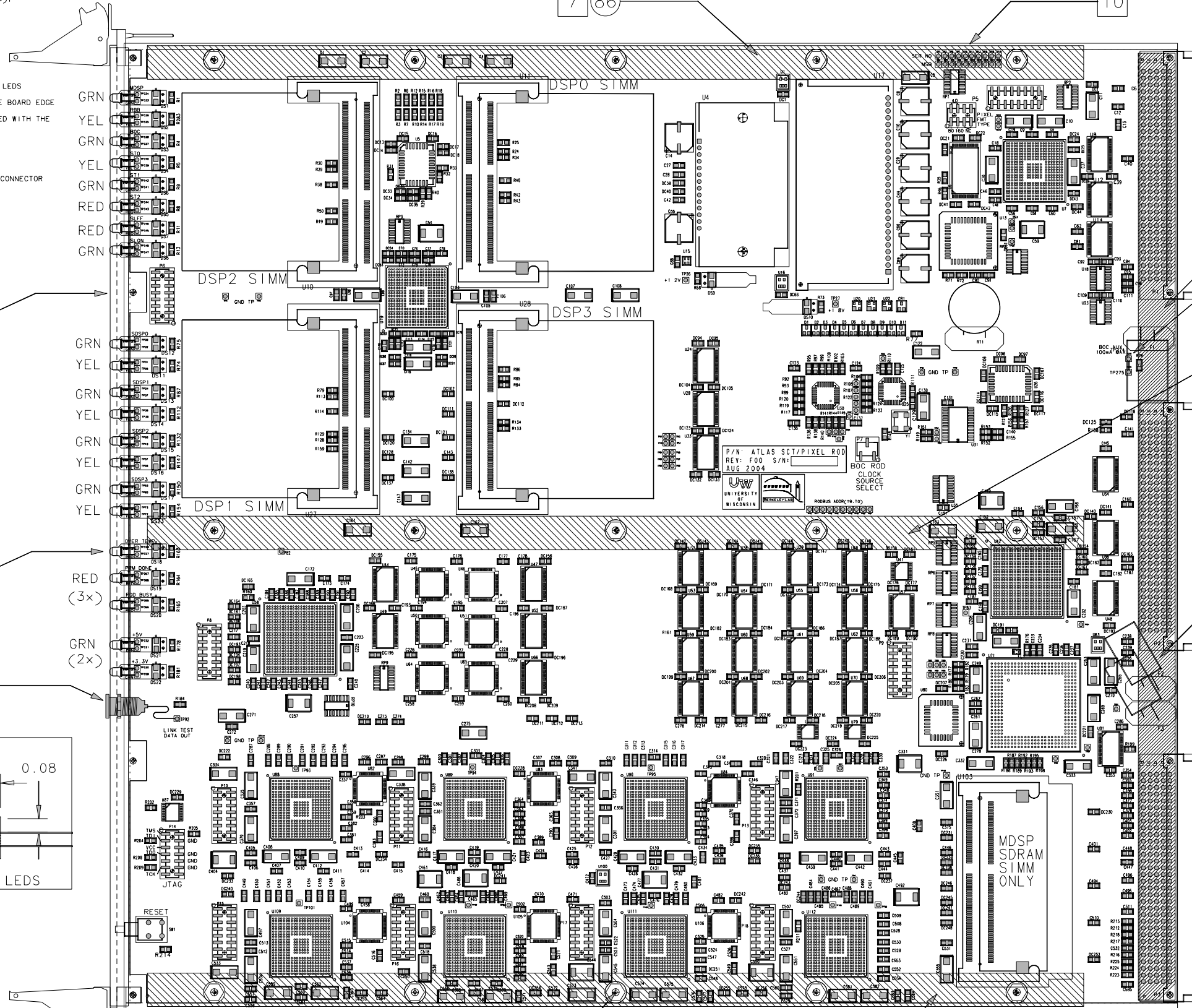


NOTES: (UNLESS OTHERWISE SPECIFIED)

1. OBSERVE POLARITY ON CAPACITORS (DENOTED BY THICK SILKSCREEN BAND), PIN ONE ON I.C.'S, AND THREE LEADED DEVICES.
2. FIDUCIALS ARE FOR OPTICAL PLACEMENT EQUIPMENT.
3. BUILD TO BEST COMMERCIAL PRACTICES.
4. BOARD SIZE: 15.748 X 14.438 IN.
5. F1, F2, & F3 SHALL BE INSTALLED AS SHOWN ON ASSY DWG.
6. SEE EXPANDED VIEW FOR MOUNTING INSTRUCTIONS FOR ALL FRONT PANEL LEDS
7. STIFFENER RAILS MOUNTED TO THE BOARD EDGE SHALL NOT OVERHANG THE BOARD EDGE
8. STIFFENER RAIL MOUNTED IN THE CENTER OF THE PCB SHALL BE ATTACHED WITH THE SAME ORIENTATION AS THE RAIL MOUNTED TO THE TOP OF THE PCB
9. ADD JUMPER ACROSS BOC AUX TEST POINTS (TP274 & TP275)
10. ADD JUMPERS ACROSS ALL SERIAL NUMBER TEST POINTS (9x)
11. ADD 28AWG WIRE FROM LINK TEST DATA OUT (TP95) TO LEMO BULKHEAD CONNECTOR ON THE FRONT PANEL



TOP SIDE SILKSCREEN

TOP SIDE SHOWN

UNLESS OTHERWISE SPECIFIED DIMENSIONS ARE IN INCHES TOLERANCES ARE: FRACTIONS DECIMALS ANGLES .01 DO NOT SCALE DRAWING		CONTRACT NO.	LAWRENCE BERKELEY NATIONAL LABS	
TREATMENT	APPROVALS	DATE	TITLE ASSEMBLY DRAWING: ATLAS ROD -SCT & PIXEL READOUT MODULE ROD BOARD	
FINISH	DRAWN B C HOLMES J M JOSEPH	10/02 7/03	SIZE D	FSCM NO.
SIMILAR TO	ISSUED		DWG. NO. -	REV. F00
ACT. WT	CALC. WT		SCALE NONE	SHEET 1 OF 2

D

C

B

A

D

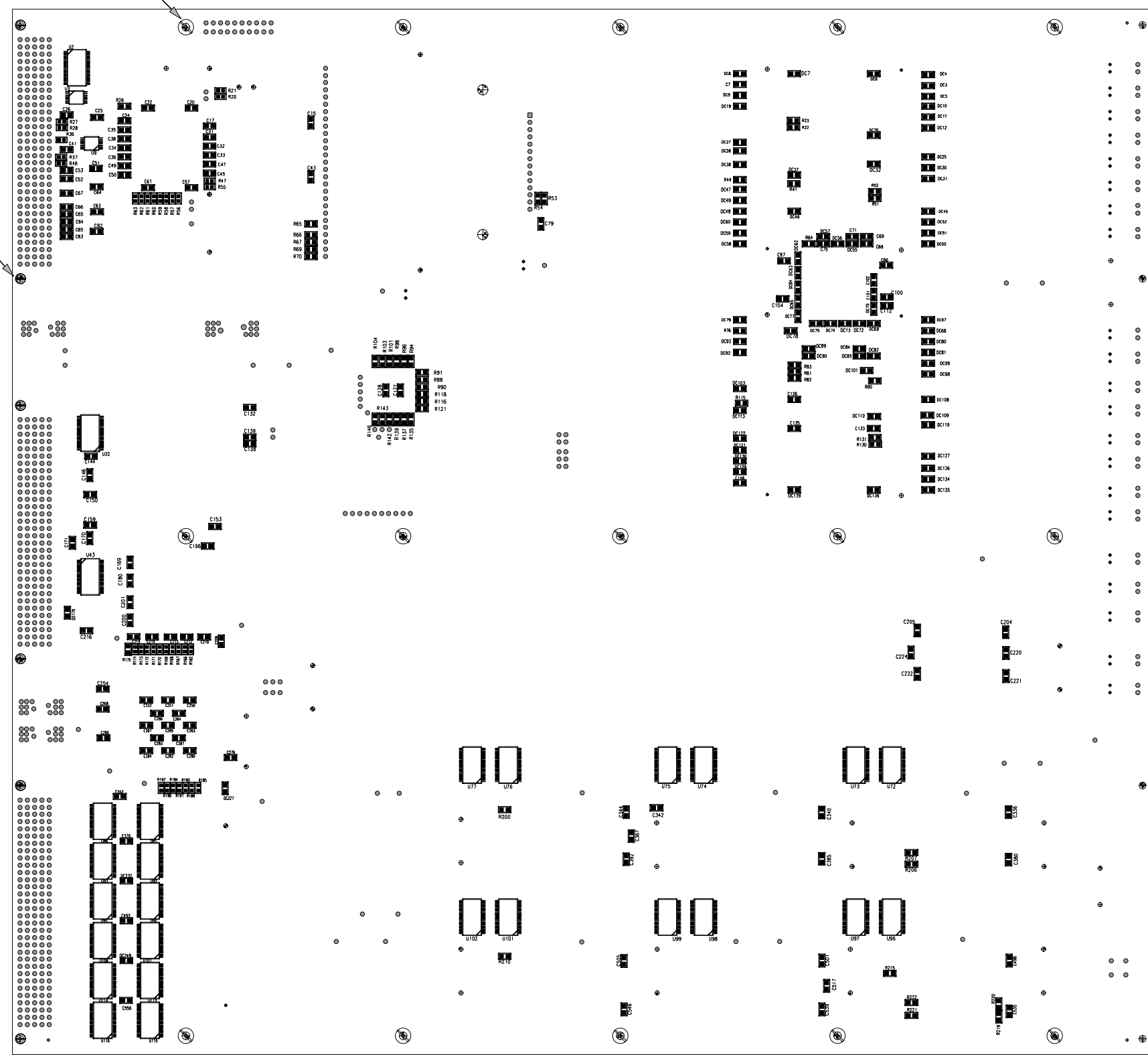
C

B

A

15X (88)

6X (84)



BOTTOM SIDE SILKSCREEN

BACK SIDE SHOWN

ATLAS ROD - SCT & PIXEL READOUT MODULE
ROD BOARD

THIS SHEET IS COMPUTER GENERATED

DRWN B C HOLMES / J M JOSEPH	SIZE D	FSCM NO.	DWG. NO.	REV. F00
ISSUED 7/03	SCALE 1:125:1		SHEET 2 OF 2	