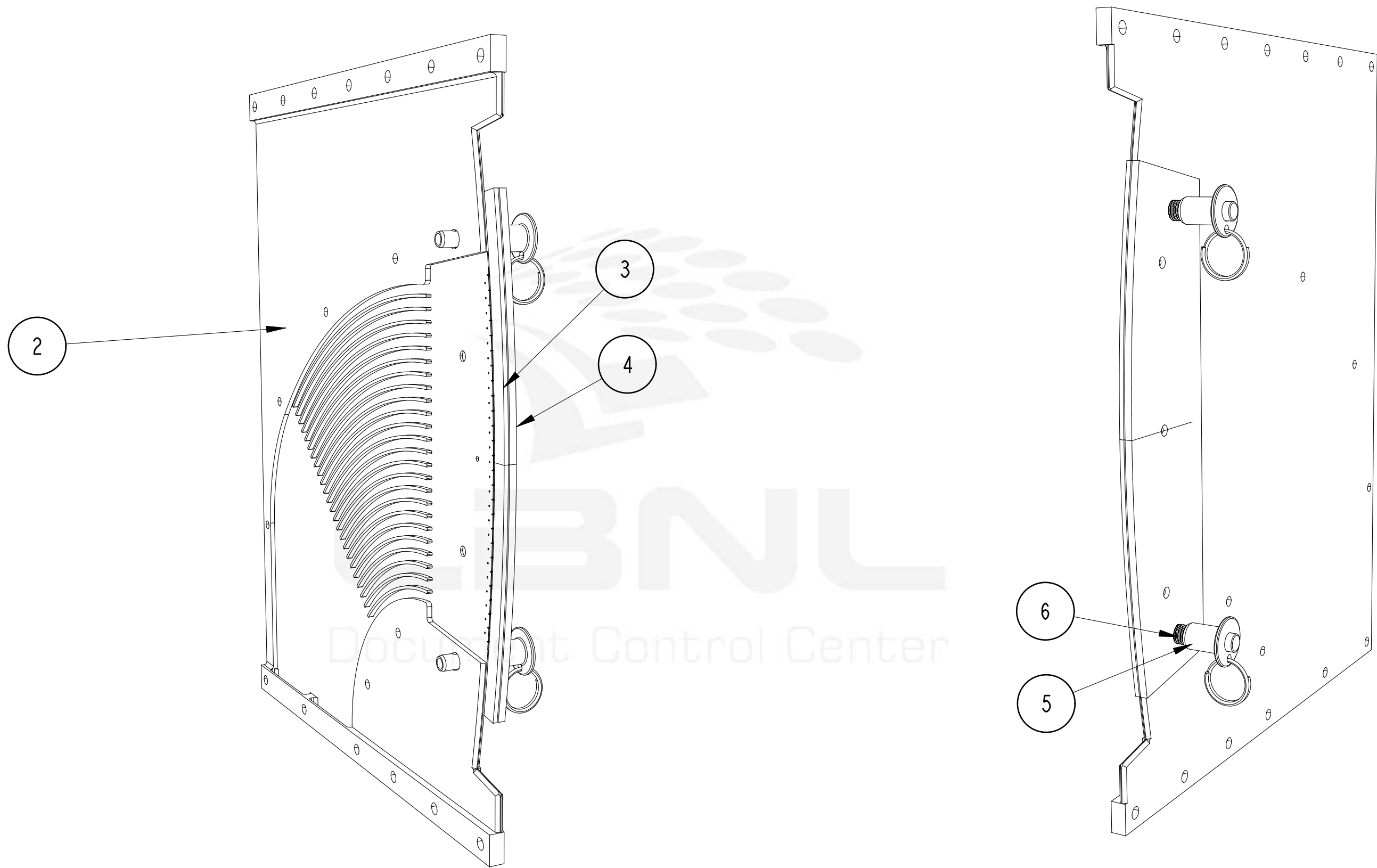


Bill Of Materials						
No.	EA.	Type	Filename/Hierarchy	Item	Dwg#	Rev
1	1	ASSEMBLY	FIBER_PLATE_ASSY_V6	FIBER SLOT ILLUMINATOR	27G788	A
2	1	PART	BOSS_PLATE_VER_6_CAST	U OF W BOSS SLITPLATE VER6 CAST PLATE SDSS3 SLITHEADS	-	-
3	1	PART	FIBER_HALFPLATE_A	FIBER SLOT ILLUMINATOR PLATE A	27G789	A
4	1	PART	FIBER_HALFPLATE_B	FIBER SLOT ILLUMINATOR PLATE B	27G790	A
5	2	ASSEMBLY	QUICKRELEASEPIN_90985A111	QUICK RELEASE PIN MMC# 90985A111	-	-
6	1	PART	SPRING_200_9435K500	SPRING, COMPRESSION MMC# 9435K500	-	-

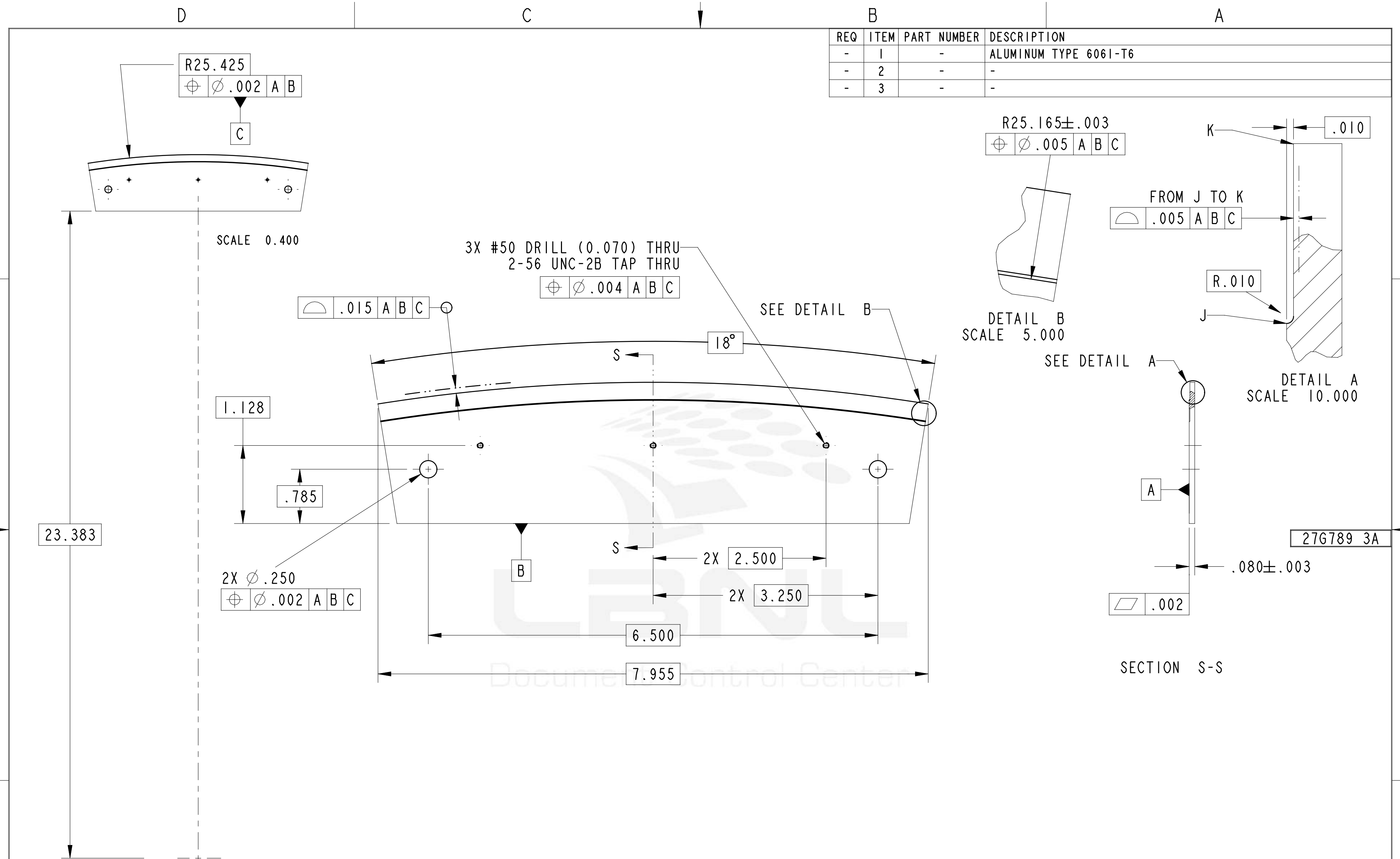


27G788 3A

Drawing: FIBER_SLOT_ILLUMINATOR_27G788 Type: ASSEM Model: FIBER_PLATE_ASSY_V6

				UNLESS OTHERWISE SPECIFIED		SHOP ORDERS		LAWRENCE BERKELEY NATIONAL LABORATORY UNIVERSITY OF CALIFORNIA-BERKELEY								
				TOLERANCES	X.X±0.1	FRAC.±1/64	ACCT NO.	PBOSSA	SERIAL NO.	-	SDSS-3 TELESCOPE					
					X.XX±0.01	Angles±0.50	DATE ISSD	-	DATE REQD	-	NO. REQD	?				
					X.XXX±0.001	FINISH 125	DELIVER TO:	GHIORSO X5274		MANUAL FIBER SYSTEM						
				DO NOT SCALE PRINT			SURFACE TREATMT	Degrease		FIBER SLOT ILLUMINATOR						
				THREADS ARE CLASS 2			IDENT METHOD	TAG		MICR FLM:	ASSEM	1.000	SHEET 1 OF 1			
				CHAMFER ENDS OF ALL SCREW TRENDS 30°			DWG BY:	GHIORSO	DATE	04-Apr-10	PAT CLR:	DWG. TYPE	SCALE	DWG NO.	SIZE	REV
				CUT ROUND, 1.5 THREAD RELIEF ON MACHINED THREADS			CHK BY:	-	DATE	-	DESIGN ACCT NO.	CATEGORY CODE	SHOWN ON	27G788	3	A
				BREAK EDGES .016 MAX. ON MACHINED WORK						PBOSSA	RP1010	-				
				REMOVE BURRS, WELD SPLATTER & LOOSE SCALE												
				IN ACCORDANCE WITH ASME Y14.5M & B46.1												
REV	DWG	CHK	ZONE	DATE	CHANGES											

REQ	ITEM	PART NUMBER	DESCRIPTION
-	1	-	ALUMINUM TYPE 6061-T6
-	2	-	-
-	3	-	-

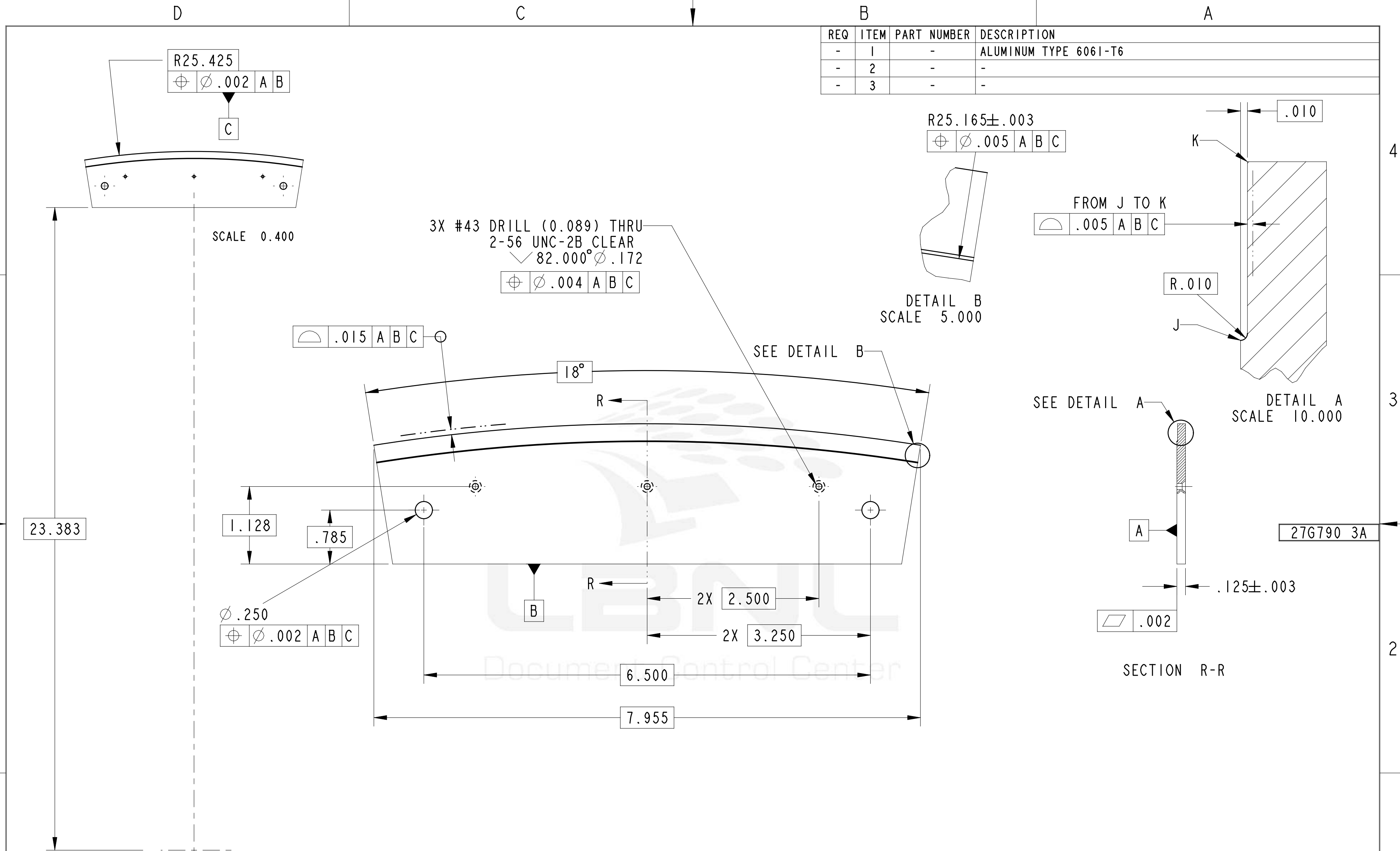


Drawing: 27G789_FIBER_HALFPATE_A Type: PART Model: FIBER_HALFPATE_A

UNLESS OTHERWISE SPECIFIED				SHOP ORDERS			LAWRENCE BERKELEY NATIONAL LABORATORY UNIVERSITY OF CALIFORNIA-BERKELEY				
TOLERANCES	X.X±0.1	FRAC.±1/64	ACCT NO.	PBOSSA	SERIAL NO.	SDSS-3 TELESCOPE					
	X.XX±0.01	Angles±0.50	DATE ISSD	-	DATE REQD	-	MANUAL FIBER SYSTEM				
	X.XXX±0.001	FINISH 125	DELIVER TO:	GHIORSO X5274			FIBER SLOT ILLUMINATOR PLATE A				
DO NOT SCALE PRINT				SURFACE TREATMT			FIBER SLOT ILLUMINATOR PLATE A				
THREADS ARE CLASS 2				Degrease			SHEET 1 OF 1				
CHAMFER ENDS OF ALL SCREW TRENDS 30°				IDENT METHOD			PART				
CUT ROUND, 1.5 THREAD RELIEF ON MACHINED THREADS				TAG			I.000				
BREAK EDGES .016 MAX. ON MACHINED WORK				DWG BY			SCALE				
REMOVE BURRS, WELD SPLATTER & LOOSE SCALE				GHIORSO			27G788				
IN ACCORDANCE WITH ASME Y14.5M & B46.1				DATE			27G789 3				
				DATE			REV				
REV	DWG	CHK	ZONE	DATE	CHANGES	PBOSSA	RP1010	27G788	27G789 3	A	

Officially Released to the LBNL Document Control Center
Released: April 5th, 2010 DCC Auth Key: D9BZVCBMBZ

REQ	ITEM	PART NUMBER	DESCRIPTION
-	1	-	ALUMINUM TYPE 6061-T6
-	2	-	-
-	3	-	-



3X #43 DRILL (0.089) THRU
2-56 UNC-2B CLEAR
82.000° Ø .172

DETAIL B
SCALE 5.000

DETAIL A
SCALE 10.000

SECTION R-R

Drawing: 27G790_FIBER_HALFLATE_B Type: PART Model: FIBER_HALFLATE_B

REV	DWG	CHK	ZONE	DATE	CHANGES

TOLERANCES		UNLESS OTHERWISE SPECIFIED		SHOP ORDERS	
X.X±0.1	FRAC.±1/64	ACCT NO.	PBOSSA	SERIAL NO.	-
X.XX±0.01	Angles±0.50	DATE ISSD	-	DATE REQD	-
X.XXX±0.001	FINISH 125	DELIVER TO:	GHIORSO X5274		
DO NOT SCALE PRINT		SURFACE TREATMT		Degrease	
THREADS ARE CLASS 2		IDENT METHOD		TAG	
CHAMFER ENDS OF ALL SCREW THREADS 30°		DWG BY		GHIORSO DATE 05-Apr-10	
CUT ROUND, 1.5 THREAD RELIEF ON MACHINED THREADS		CHK BY		-	
BREAK EDGES .016 MAX. ON MACHINED WORK		DATE		-	
REMOVE BURRS, WELD SPLATTER & LOOSE SCALE		MICH FLM:		PART	
IN ACCORDANCE WITH ASME Y14.5M & B46.1		DESIGN ACCT NO.		CATEGORY CODE	
		PBOSSA		RPI010	
		SCALE		1.000	
		SHOWN ON		27G788	
		DWG NO.		27G790	
		SIZE		3	
		REV		A	

LAWRENCE BERKELEY NATIONAL LABORATORY
UNIVERSITY OF CALIFORNIA-BERKELEY
SDSS-3 TELESCOPE
MANUAL FIBER SYSTEM
FIBER SLOT ILLUMINATOR PLATE B
SHEET 1 OF 1

