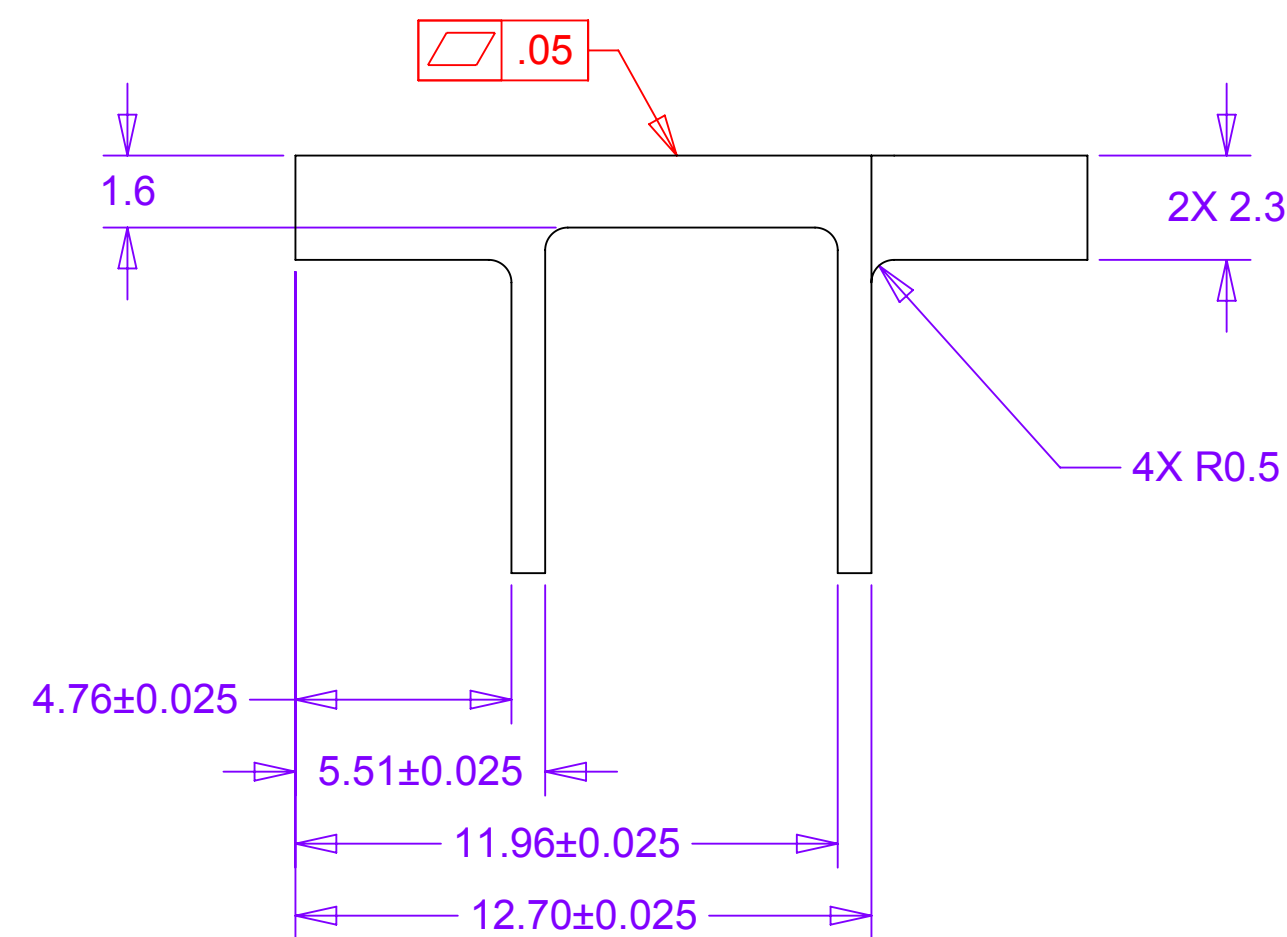
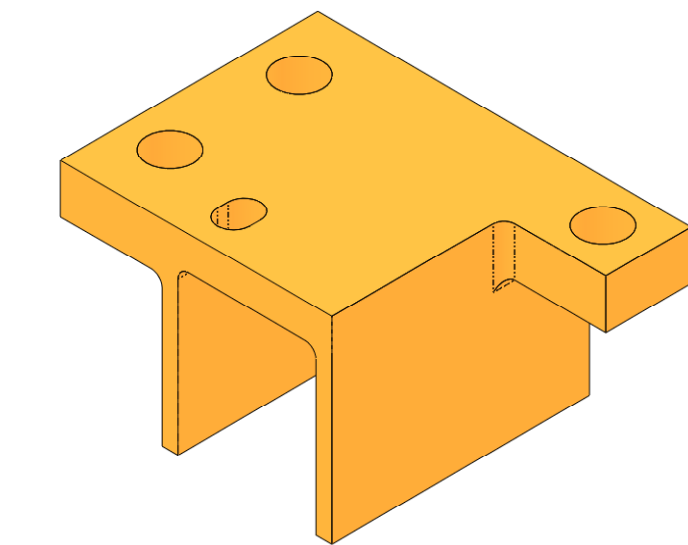
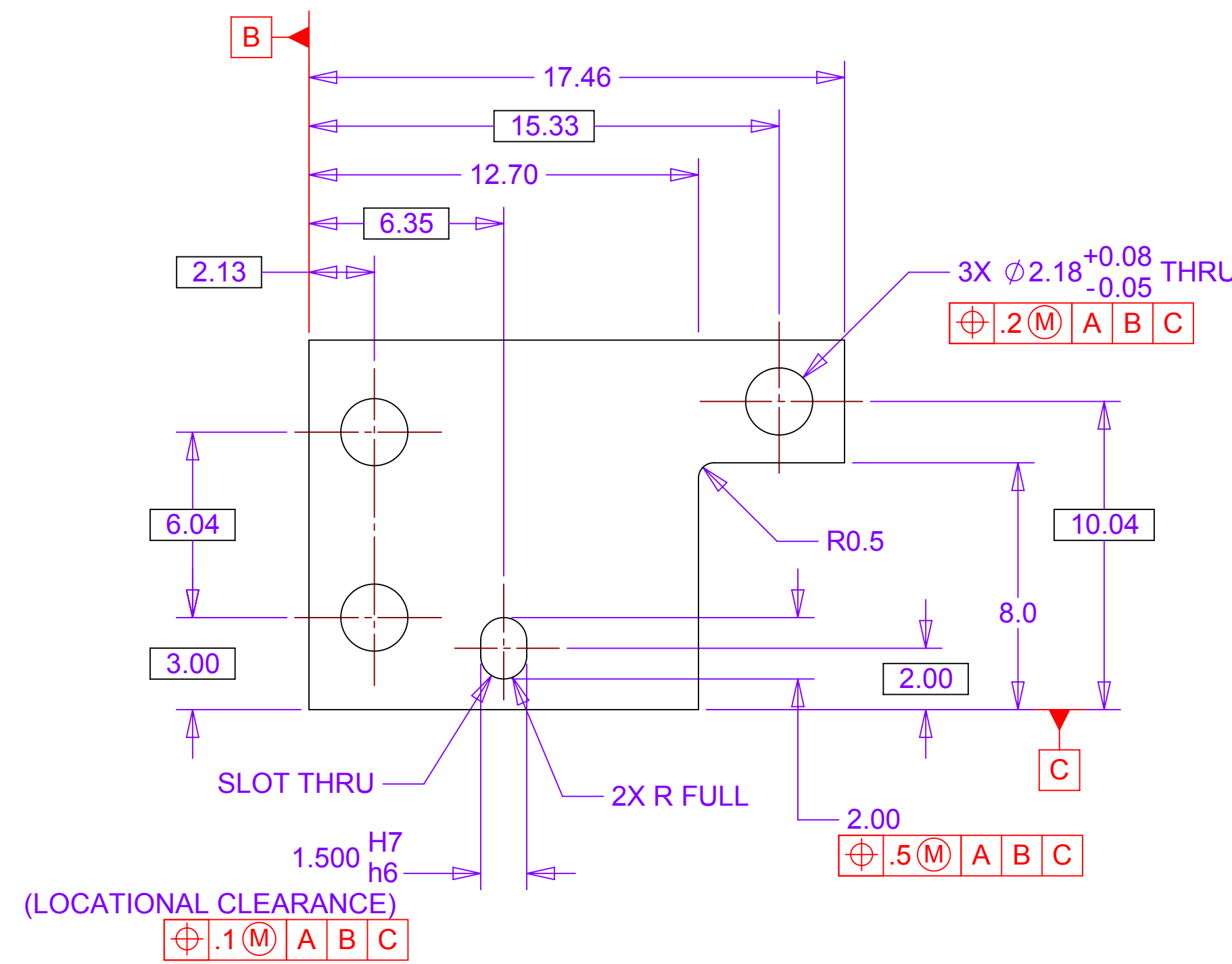
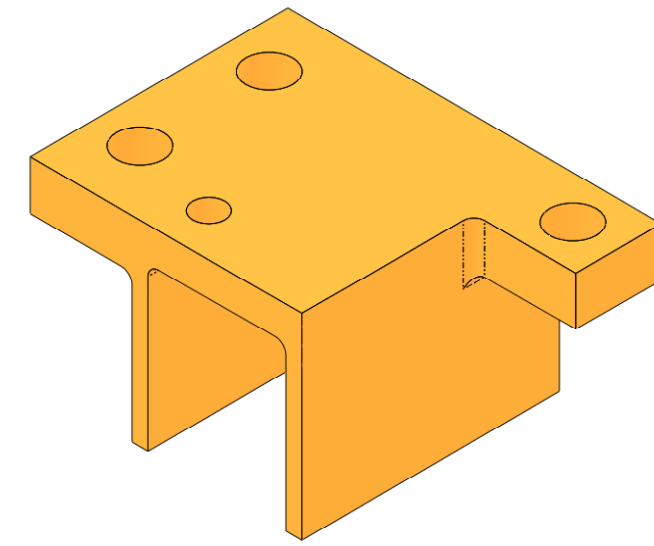
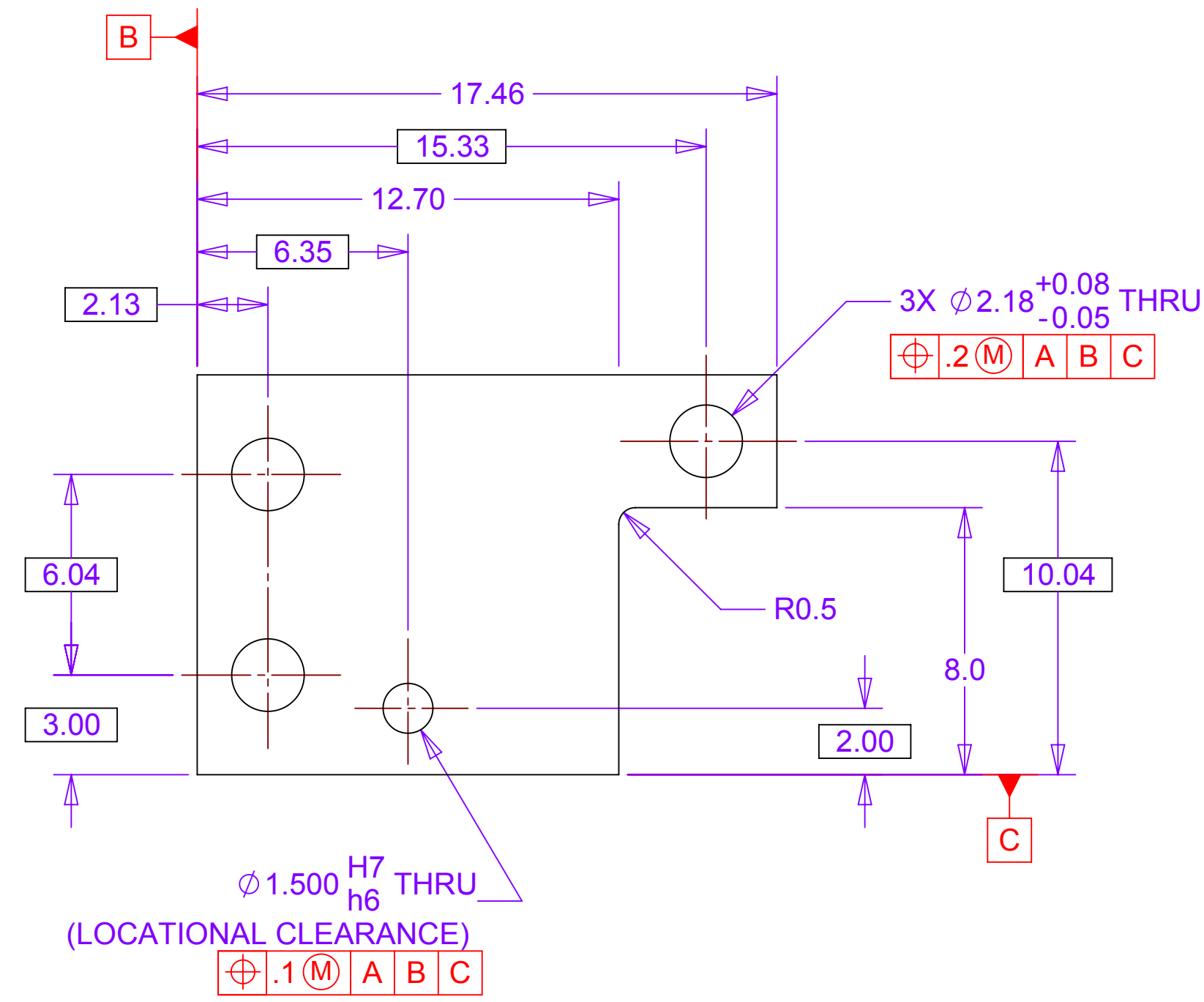
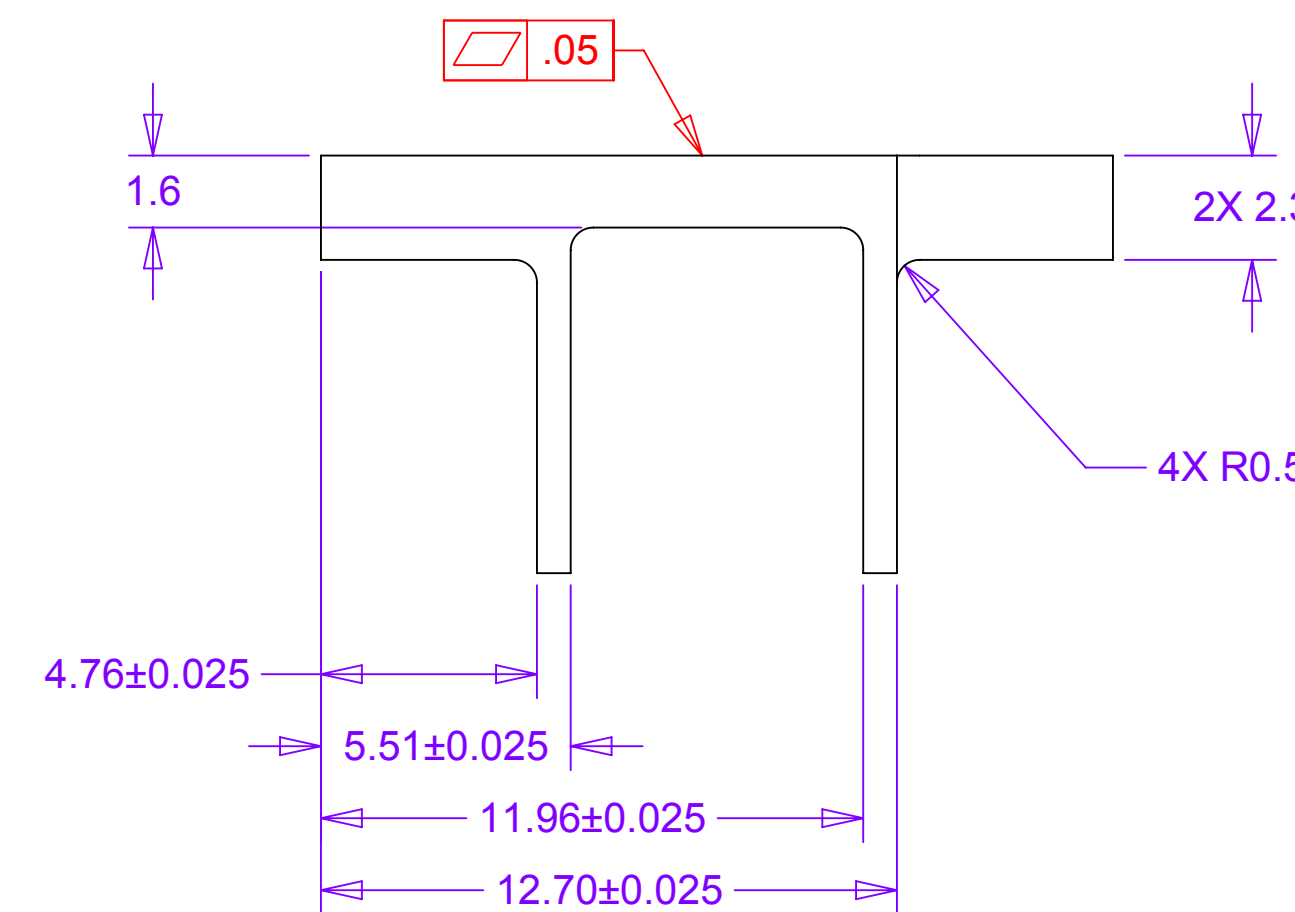


| REVISIONS | | DATE | APPROVED |
|-----------|-------------|------|----------|
| REV | DESCRIPTION | | |
| | | | |



-1 BARREL SUPPORT MOUNT 2

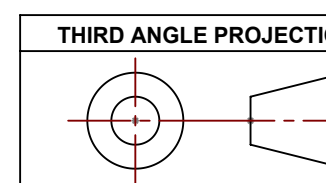


-3 BARREL SUPPORT MOUNT 6

NOTES: UNLESS OTHERWISE SPECIFIED

- ALL DIMENSIONS IN MILLIMETERS
- DIMENSIONS AND TOLERANCING PER ASME Y14.5M-1994
- SURFACE TEXTURE PER ANI/ASME B 46.1-1985
- REMOVE ALL BURRS AND BREAK SHARP EDGES TO A MAXIMUM OF .4
- ALL INSIDE CORNERS TO BE .4 RADIUS MAX
- COUNTERSINK 82 DEGREES ALL TAPPED HOLES TO MAJOR DIAMETER
- COUNTERSINK 82 DEGREES APPROXIMATELY .08/1.5 DEEP ALL DRILLED HOLES
- PARTS TO BE THOROUGHLY CLEANED TO REMOVE ALL OIL, GREASE, DIRT AND CHIPS
- PART NUMBER (DRAWING NO., DASH NO., REVISION NO., SERIAL NO.) TO BE CLEARLY MARKED ON THE PACKAGING BAG OR PART ITSELF.

THIS DOCUMENT CONTAINS INFORMATION THAT IS THE PROPRIETARY PROPERTY OF HYTEC, INC. REPRODUCTION, DISCLOSURE, OR RELEASE TO OTHERS, MANUALLY OR ELECTRONICALLY, IS STRICTLY PROHIBITED WITHOUT THE PRIOR WRITTEN CONSENT OF HYTEC, INC.



| UNLESS OTHERWISE SPECIFIED: DIMENSIONS ARE IN MILLIMETERS -TOLERANCES- | |
|--|----------------------|
| DECIMALS | ANGULAR |
| X = +/- .5 | X = +/- 30' |
| X = +/- .1 | XX = +/- 15' |
| XX = +/- .01 | |
| XXX = +/- .001 | SURFACE FINISH = 250 |

| CAD GENERATED DRAWING. DO NOT MANUALLY UPDATE. DO NOT SCALE DRAWING. | | |
|--|----------------|----------|
| DESIGNER | SIGNATURE | DATE |
| Drawn | Roger L. Smith | 8/5/2008 |
| Checked | RJ Ponchione | 4/7/2009 |
| Engineer | RJ Ponchione | 4/7/2009 |
| Approved | RJ Ponchione | 4/7/2009 |

| HYTEC, INC | | |
|--|----------|-----------|
| TITLE | | |
| PHENIX CENTRAL UPGRADE VTX BARREL STAVE BARREL SUPPORT MOUNT 2 & 6 | | |
| DWG. NO. | SIZE | SHEET NO. |
| 111-PHX-02-2043 | D | 1 of 1 |
| SCALE | REVISION | |
| 10:1 | | |